

# Capital Improvement Program

Monthly Bond Report  
August 2023



*Bruns Elementary School Replacement*



---

## **CAPITAL PROGRAM SERVICES**

### **Capital Improvement Program**

## **AUGUST 2023**

### **MONTHLY BOND REPORT**

#### **PROGRAM OVERVIEW**

- Project Management
- Design and Bidding
- Controls
- MWSBE
- Bond Progress Summary
- Project Procurement - Next 90 Days
- Bond Summary Schedule
- Project Contractor Teams; Projects in Design/Construction and Substantially Completed/Closed
- School Site Location Maps
  - Elementary Schools
  - Middle Schools
  - High Schools & Specialty Schools

#### **PROJECT STATUS REPORT**

#### **MWSBE PARTICIPATION REPORT**

#### **PROJECT PROGRESS PHOTOS**

#### **PROJECT CONTROLS**

- Budget Summary Reports
  - 2013 Bond Series
  - 2017 Bond Series
- Change Orders < \$90,000
- Expenditure Summary

#### **GLOSSARY**

# PROGRAM OVERVIEW

## PROJECT MANAGEMENT

The following is a summary of the activity on the bond-funded projects in construction during the month of August.

The **Bruns Elementary School Replacement** construction manager continued to push the schedule this month with multiple trades working throughout the buildings. The steel contractor continued with the installation of roof joist and the structure for the administration and kitchen buildings. The steel structure is complete in the classroom and the exterior metal studs installed along with sheathing for the first and second floors. The mechanical, electrical and plumbing trades continued with rough in on the first and second floors. The site work contractor continued with storm piping and utility installations. Scheduled occupancy is August 2024. The demolition of the old building and associated site work will commence once the new building is occupied.

The **Esperanza Global Academy** (*fka New ES Windsor, Winterfield, idlemwild Relief*) construction manager has completed paving of the bus and staff lots. The project has received occupancy approval and staff and students have occupied the building. Site landscaping including trees and shrubs was completed. Bermuda sod is down at the K-1 courtyard. Building finishes are complete. Waxing of classroom floors is complete. Punchlist and project closeout will continue. This new 45-classroom school was occupied August 2023.

The construction manager for the **Garinger Addition and Renovation** project has completed commissioning activities for the 300 Building renovations. The replacement glass and glazing work is complete. The building was occupied in January 2023.

The **Grove Park Elementary School** (*fka New ES Hidden Valley, JW Grier, Newell*) construction manager has completed paving of the bus lot and shared staff lot with Northridge Middle School. The project has received occupancy approval and staff and students have occupied the building. Site landscaping including trees and shrubs was completed. The classroom floors have been waxed and FF&E installation is installed. Punchlist and project closeout will continue. This new 45-classroom school was occupied August 2023.

The construction manager for **JT Williams Secondary Montessori** has obtained occupancy approval of the 100 Building. FF&E installation is complete. Two RTU's are temporary units until the permanent mechanical units arrive. The contractors worked diligently towards the August occupancy schedule allowing students and staff to start school in the 200 Building. Punchlist and project closeout continues.

The **Lincoln Heights** Montessori School repurpose project renovations are complete. The building occupancy approvals have been granted and staff has occupied the facility. FF&E has been moved from Trillium Springs. The contractor is working off a minor punch list. The project is now in the closeout phase. The building was occupied in August 2023.

The **Mountain Island Lake Academy Gym/Classroom Addition** construction manager is working on their closeout activities along with punch list items. The new building is occupied.

The **New Elementary School (Elon, Hawk Ridge, Polo Relief)** construction manager continued to manage multiple trades on the project. The roofer continued with the installation of the roof working towards dry-in of all buildings. The mason continued with interior block walls and installations of brick veneer. The glass and glazing contractor continued with the installation of the window installations throughout the project. The mechanical, electrical, plumbing and fire sprinkler contractors continued with in wall and above ceiling rough-ins throughout the building. The site work contractor began installations of Beau Riley Road along with final grading of the site. The new 45-classroom elementary school is located across from the Ardrey Kell High School and scheduled occupancy is August 2024.

The **New High School (South, Ardrey Relief)** construction manager continued with masonry installations, erection of structural steel and exterior metal studs. The roofer continued installations on the buildings with load bearing masonry. The MEP trades began above ceiling rough in on the first and second floor of the classroom wing along with interior metal studs. The site work contractor continued with the final installations of the underground detention, removal of excess soil and installation of the water line. The outbuilding CMU masonry installations continued along with electrical and plumbing rough-ins. The new 100-classroom relief high school scheduled occupancy is August 2024.

The **Northwest School of the Arts** Phase 1 project has progressed into the construction phase. The Phase 1 design scope includes the underground storm water detention system and new car parking lot in preparation for Phase 2.

The **West Charlotte High School** construction manager continued to finalize work on Phase 2 (demolition/site work). The north parking lot and front staff lot are complete. The staff has transitioned from the temporary office/entrance to the new main entrance. The athletic fields are sodded and fencing is finalized. The site contractor paved the old entrance locations along Senior Drive and Southwest Boulevard. This last phase of paving allowed the school to use the completed lot as planned. Punchlist and project closeout continues.

## DESIGN AND BIDDING

The following is a summary of the activity on the bond-funded projects in design and bidding phase during the month of August.

The **Northwest School of the Arts** Phase 2 design documents continue to progress in their construction document development. Phase 2 scope includes a new administration, visual/performing arts building and other campus renovations. Phase 2 design documents will be issued for permit approval in the 4<sup>th</sup> quarter of 2023.

The **South Mecklenburg High School Addition** Phase 1 project work continues to progress with procuring long lead equipment for the project. The remaining scopes of work for the project are in procurement by the construction manager. The final GMP will be submitted to the Board for award in September. The project consists of a 3-story classroom addition providing 19 classrooms that support the CTE program, visual arts and the JROTC program. The coordination of utility relocations and relocation of the existing mobile classroom units continues to progress to allow construction of the new building. Scheduled occupancy of the new building is January 2025.

## CONTROLS

Expenditures for the month of August were \$17.8M. This brings our fiscal year to date total to \$34.7M against the 2024 fiscal year cash flow projection of \$165M. The Controls team continues the reconciliation and closeout of completed 2017 bond projects turned over this fiscal year. Available funding identified from completed projects is being accumulated for future capital needs.

Board of Education approval was received on August 22 for a construction contract change for the New High School-South/Ardrey Kell Relief.

The Controls team continues to submit notices of potential changes at school sites so senior staff can adequately evaluate any issues. Additionally, the Controls team continues the processing of contracts, invoices, preparing notices of potential change, change orders, pay applications, and check requests for projects under construction. Captured construction cost data is used to prepare financial reports such as detailed cost reports, budget summaries, reconciliation to CMS books, revisions to and updated cash flows and complete special financial requests by CMS

and Mecklenburg County. This process, along with data compilation and management, allows senior staff to provide the proper guidance/direction and accurate information to the program stakeholders.

## MWSBE

As of August 2023 the overall MWSBE utilization percentage related to design and construction of the 2017 bond projects is 45.63% which includes 19.31% participation by minority contractors, 23.96% by women contractors and 2.36% participation by small business contractors. This accounts for more than \$408 million of utilization by Minority, Women and Small Business Contractors.

The Diversity & Inclusion Office of Charlotte-Mecklenburg Schools continued to conduct several individual virtual orientations with new MWSBE contractors and prime contractors. In addition, team members also attended/hosted the following outreach sessions/pre-bid meetings and/or workforce development opportunities:

### Outreach Sessions:

- Carolinas-Virginia Minority Supplier Development Council Business Opportunity Conference
- American Contract Compliance Association National Training Institute
- Metrolina RING Quarterly Meeting – How to do business with CMS
- Charlotte MED Week Planning Meeting

### Commendation:

Congratulations to the following Carolinas-Virginia Minority Supplier Development Council, Inc. Business Opportunity Conference Award Honorees: GCS Consulting - MBE Class I Supplier of the Year, White Holdings - MBE Class II Supplier of the Year, Core Technologies MBE Class III Supplier of the Year and MBE2MBE Impact Award, APC Inc. - MBE Class IV Supplier of the Year, Clemson University – Regional Corporation of the Year, Andrea Horn – Advocate of the Year, and Lori Green Coordinator of the Year. Award winners were selected for sound business strategies while driving economic development in the Carolinas-Virginia region.

Over the next month, team members will continue to work with contractors interested in bidding on the upcoming school projects utilizing various virtual tools to communicate. Contractors are encouraged to review bid advertisements in Charlotte Observer and register as a vendor on the North Carolina Interactive Purchasing System for notification of the various opportunities.

## BOND PROGRESS SUMMARY As of August 2023

Funding Source and Value		Amount Committed/Pending	Amount Paid to Date	Amount Expended This Period
'13 Bond	\$316,067,527	\$314,489,827	\$314,398,226	<b>\$41,739</b>
'17 Bond	\$1,005,473,959	\$983,933,437	\$805,667,451	<b>\$17,773,222</b>
Grand Total	<b>\$1,321,541,486</b>	<b>\$1,298,423,264</b>	<b>\$1,120,065,677</b>	<b>\$17,814,961</b>

---

---

## UPCOMING MAJOR CONSTRUCTION PROCUREMENT DATES *Three-Month Look Ahead*

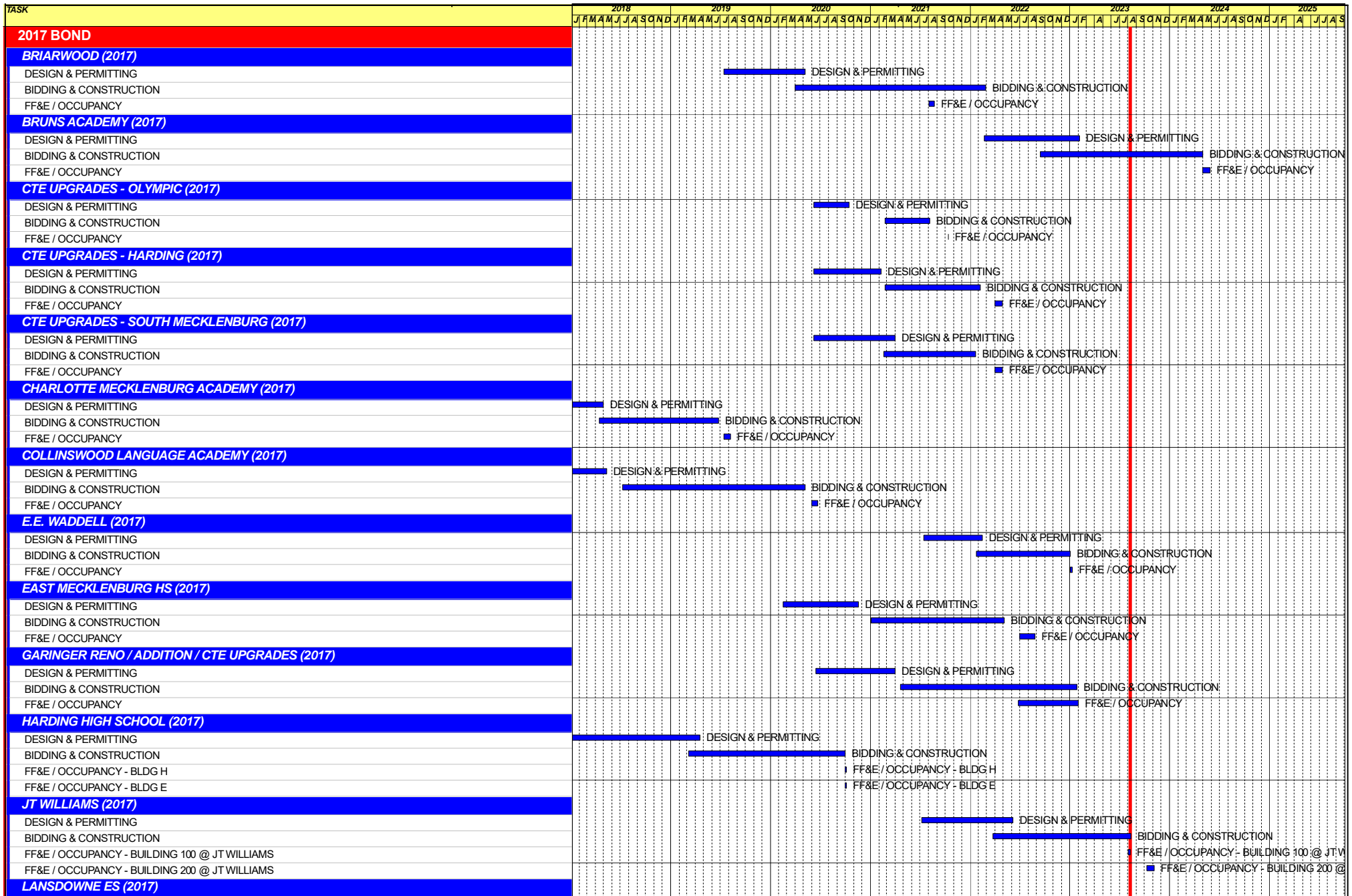
**School Name**

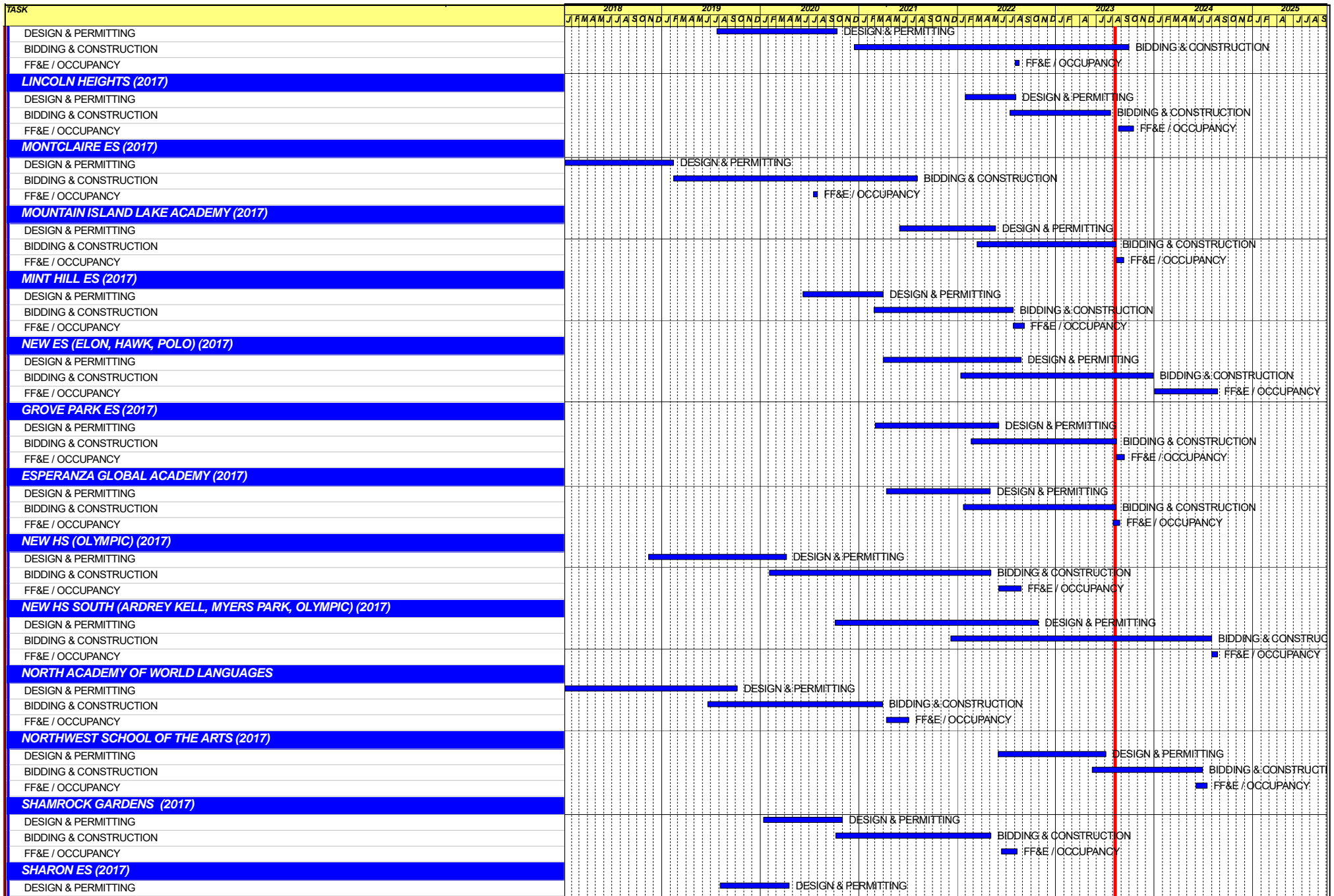
**Bid Dates\***

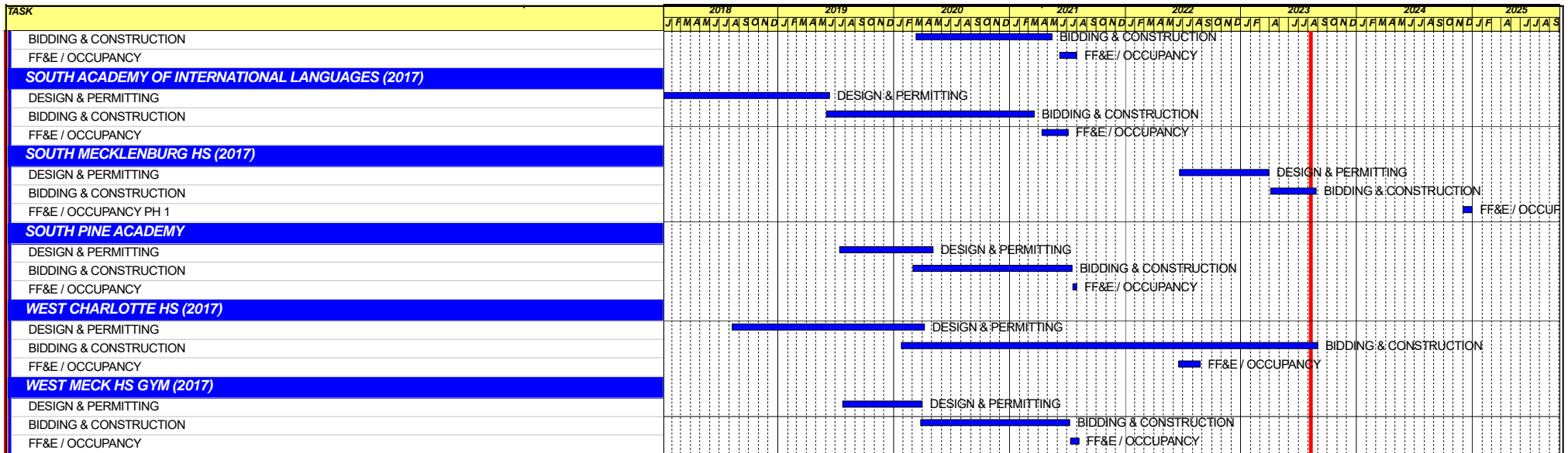
None

*\* NOTE: Work In Progress...Dates Subject to Change.*









Capital Improvements Program  
*Projects in Design or Under Construction*








School	Architect	General Contractor/CM
<b>Projects In Design</b>		
Northwest School of the Arts Addition (17)	LS3P	Balfour Beatty
South Mecklenburg High School Addition (17)	Morris Berg	Balfour Beatty
<b>Projects in Bid/Award/Construction Phase</b>		
Esperanza Global Academy (17)	Neighboring Concepts	Rodgers-Holt Brothers
Grove Park ES (17)	ADW	Edifice, Inc.
J.T. Williams (17)	FWA	New Atlantic
Lansdowne Elementary School Replacement (17)	Perkins Eastman	Edifice, Inc.
Lincoln Heights Repurpose (17)	Neighboring Concepts	Randolph & Sons
Mountain Island School (17)	ADW	Whiting-Turner
New ES (Elon,Hawk Ridge, Polo Ridge) (17)	Little Diversified	Balfour Beatty
New Bruns Avenue ES (17)	ADW	Edifice, Inc.
New HS (South, Ardrey) (17)	Ratio	Messer
West Charlotte High School (17)	LS3P	Rodgers-Holt Brothers

Capital Improvements Program  
***Projects Substantially Completed/Closed*** \*




School	Turnover Year	Architect	General Contractor
E.E. Waddell (17)	Jan-23	Moseley	Randolph & Sons Builders
Garinger Addition/Renovation & CTE (17)	Jan-23	LS3P	Balfour Beatty
Palisades High School (Olympic Relief) (17)	Aug-22	Little Diversified	Edifice, Inc.
Shamrock Gardens Elementary School Replacement (17)	Aug-22	Little Diversified	Rodgers/Holt Brothers
Mint Hill ES (17) <i>(fka Bain, Lebanon Rd, Piney Grove)</i>	Aug-22	FWA	Metcon
East Mecklenburg High School (17)	May-22	Morris Berg	Turner Construction
CTE (Harding, Olympic, South) (17)	Jan-22	MPS	Branch Brownstone
Briarwood Elementary School Replacement (17)	Aug-21	ADW	New Atlantic Contracting
Montclair Elementary School (17)	Aug-21	WHN	Messer Construction
North Academy of World Languages (17)	Aug-21	ADW	New Atlantic Contracting
Sharon Elementary School (17)	Aug-21	Clark Nexsen	Samet
South Academy of International Languages (17)	Aug-21	FWA	Messer Construction
South Pine Academy (17)	Aug-21	FWA	Metcon
West Mecklenburg Gym (17)	Aug-21	Moseley	Barnhill/D.A. Everett
Collinswood Language Academy (17)	Aug-20	Perkins Eastman	Turner Construction
Harding High School Renovation (17)	Aug-20	SFLA	Barnhill Contracting
Rea Farms STEAM Academy (13)	Aug-20	Little Diversified	Balfour Beatty
Ashley Park K-8 Conversion (13)	Aug-19	ADW	Turner Construction
Druid Hills K-8 Conversion (13)	Aug-19	ADW	Edifice, Inc.
Selwyn Elementary (13)	Aug-19	Clark Nexsen	Balfour Beatty
Charlotte Mecklenburg Academy (17)	Aug-19	KSQ	Edifice, Inc.
Davidson K-8 (13)	Aug-19	Little Diversified	Gilbane
CTE - North Mecklenburg High (13)	Aug-19	LS3P	Shiel Sexton
CTE - Garinger (13)	Mar-19	LS3P	Hostetter & Son
CTE - Independence (13)	Mar-19	LS3P	D.E. Brown
CTE - West Mecklenburg (13)	Mar-19	LS3P	Hostetter & Son
Charlotte East Language Academy (13)	Aug-18	Morris Berg	Edifice, Inc
Myers Park High School Phase 3 (13)	Aug-18	Boomerang Design	BE&K
Northridge Middle (13)	Aug-18	Morris Berg	Barnhill Contracting
Myers Park High Bldg 2 (13)	Feb-18	Boomerang Design	BE&K
East Mecklenburg High Addition (13)	Jan-18	Bergman (fna Gantt Huberman)	Edifice, Inc.
J.M. Alexander Middle (13)	Aug-17	FWA Group	Balfour Beatty
Northwest School of the Arts Renovation (13)	Aug-17	Moseley	Turner Construction
Renaissance West STEAM Academy (13)	Aug-17	Little Diversified	Rodgers Construction
South Mecklenburg High Addition (13)	Jul-17	SFLA	Barnhill Contracting
Myers Park High Bldg 1 (13)	Sep-16	Boomerang	KBR
Statesville Road Elementary (13)	Aug-16	ADW	JE Dunn
Nations Ford Elementary (13)	Aug-16	Wash Hatem Nelson	Messer Construction
Olympic High Addition (13)	Aug-16	McMillan, Pazdan, Smith	Turner Construction
Lawrence Orr Elementary (07)	Aug-15	Cort Architectural Group	DH Griffin/Metcon
Parkside Elementary (07)	Aug-15	Wash Hatem Nelson	Clancy & Theys
Hawthorne High Renovations (07)	Aug-15	Morris-Berg	Balfour Beatty
Newell Elementary (07)	Aug-15	Perkins Eastman	New Atlantic Contracting
Ranson Middle (07)	Aug-15	Morris-Berg	Edifice, Inc.
Vance High	Jan-15	LS3P	Matthews Construction Co., Inc.
Garinger High - Renovations/Addition	Aug-14	Adams Group Architects	Turner Construction
Olympic High - Stadium	Aug-14	Site Solutions	Turner Construction
West Mecklenburg High - Stadium	Aug-14	Site Solutions	Turner Construction
Collinswood - Indoor Air Quality	Aug-14	PEA	The Bowers Group
Lansdowne - Indoor Air Quality	Aug-14	AeroRaq	Tyler 2
McKee Road - Indoor Air Quality	Aug-14	McCracken & Lopez	Godfrey Construction
Garinger High - Track & Field	Jul-14	Site Solutions	Turner Construction
Independence High - Gym	Jun-14	Shook Kelly	Shelco, Inc. (CM)
Palisades Park Elementary	May-14	Wash Hatem Nelson	Clancy & Theys
East Mecklenburg High Auditorium	Jan-14	Gantt Huberman Associates	Godfrey Construction Co., Inc.

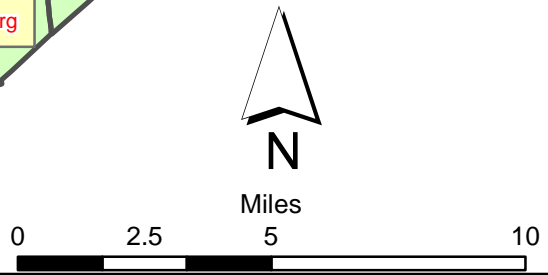
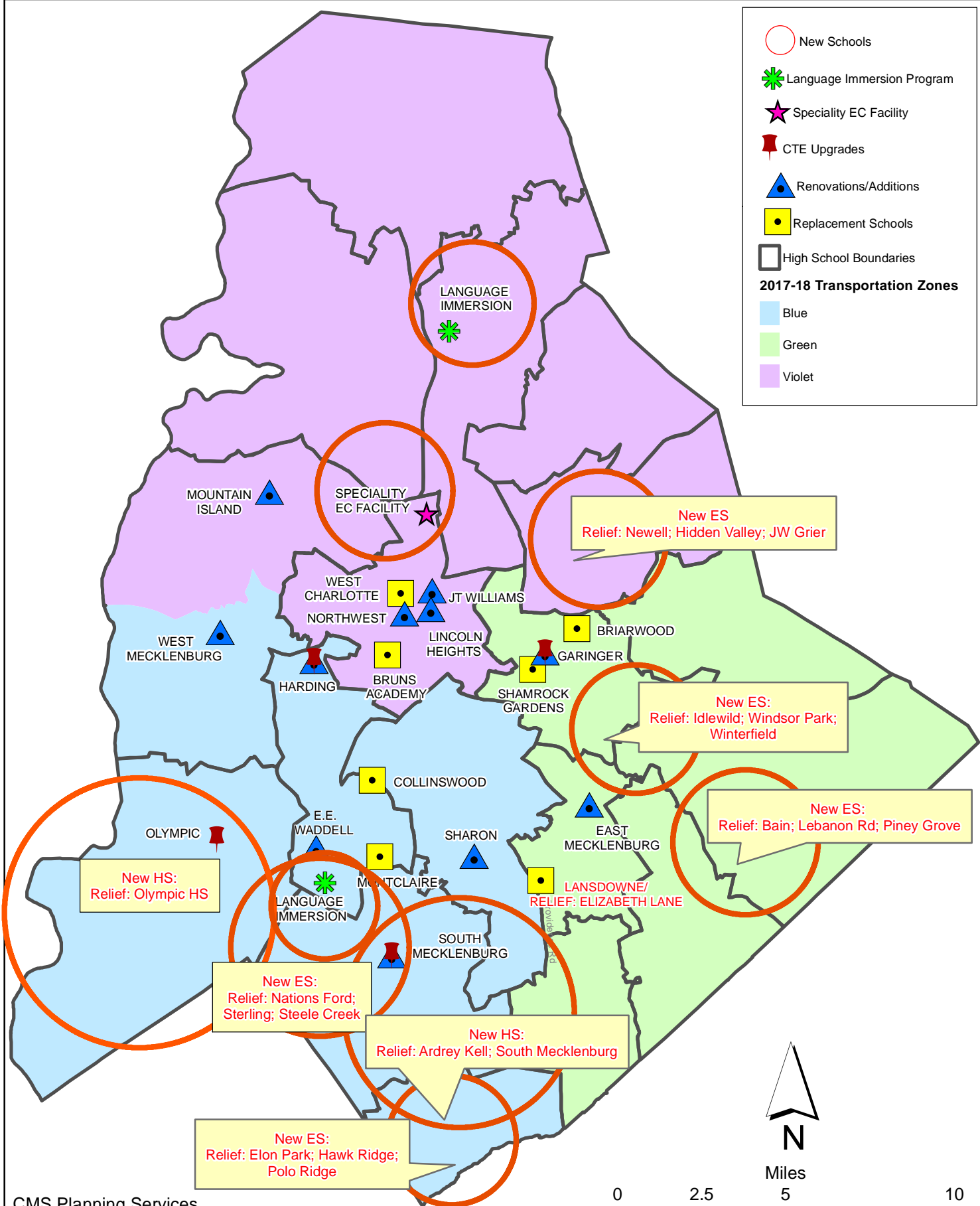
Projects closed prior to 2014 are not shown

# CMS Capital Improvement Plan 2017 Bond Projects

-  New Schools
-  Language Immersion Program
-  Speciality EC Facility
-  CTE Upgrades
-  Renovations/Additions
-  Replacement Schools
-  High School Boundaries

**2017-18 Transportation Zones**

-  Blue
-  Green
-  Violet



# PROJECT STATUS REPORT



## Monthly Project Status 2017 Bond Summary August 2023

Project	Current Project Estimate	Project Scope	** Occupy On	Design Phase	Construction Progress	Project Status
Briarwood Elementary School (17)	\$ 31,243,066	45-classroom replacement facility; replaces school built in 1956.	August 2021	Complete	100 %	Project is complete.
Bruns Avenue Elementary School (17)	\$ 48,890,679	New 45-classroom elementary school (K-5); replaces old school built in 1969.	August 2024	Complete	25 %	The Bruns Elementary School Replacement construction manager continued to push the schedule this month with multiple trades working throughout the buildings. The steel contractor continued with the installation of roof joist and the structure for the administration and kitchen buildings. The steel structure is complete in the classroom and the exterior metal studs installed along with sheathing for the first and second floors. The mechanical, electrical and plumbing trades continued with rough in on the first and second floors. The site work contractor continued with storm piping and utility installations. The demolition of the old building and associated site work will commence once the new building is occupied.
Career and Technology Education (17)	\$ 9,659,765	Phase I CTE upgrades at Olympic, Harding, Garinger and South Mecklenburg.	January 2022	Complete	100 %	Project is complete.
Charlotte-Mecklenburg Academy (17)	\$ 17,699,220	New EC school located on the old Statesville Elementary School site.	August 2019	Complete	100 %	Project is complete.
Collinswood Language Academy (17)	\$ 41,412,015	New 63-classroom K-8 facility on the site of the Smith Family Center.	August 2020	Complete	100 %	Project is complete.
E.E. Waddell (17)	\$ 5,137,367	Repurpose current E.E. Waddell to reopen as a magnet high school.	August 2023	Complete	100 %	Project is complete.



**Monthly Project Status**

2017 Bond Summary

August 2023

Project	Current Project Estimate	Project Scope	** Occupancy On	Design Phase	Construction Progress	Project Status
East Mecklenburg High School (17)	\$ 10,231,911	This project will provide for the design, and construction of a new 30 classroom building.	August 2022	Complete	100 %	Project is complete.
Esperanza Global Academy (17)	\$ 45,297,022	New 45-classroom elementary school to relieve Windsor, Winterfield, and Idlewild ES.	August 2023	Complete	99 %	The Esperanza Global Academy (fka New ES Windsor, Winterfield, Idlewild Relief) construction manager has completed paving of the bus and staff lots. The project has received occupancy approval and staff and students have occupied the building. Site landscaping including trees and shrubs was completed. Bermuda sod is down at the K-1 courtyard. Building finishes are complete. Waxing of classroom floors is complete. Punchlist and project closeout will continue. This new 45-classroom school was occupied August 2023.
Garinger High School (17)	\$ 5,236,979	Project includes the design and construction for renovations of 300 building and a new 16 classroom building.	January 2023	Complete	99 %	The construction manager for the Garinger Addition and Renovation project has completed commissioning activities for the 300 Building renovations. The replacement glass and glazing work is complete. The building was occupied in January 2023.
Grove Park Elementary School (17)	\$ 44,079,387	New 45-classroom elementary school; relieves overcrowding at Hidden Valley, J.W. Grier, Newell.	August 2023	Complete	99 %	The Grove Park Elementary School (fka New ES Hidden Valley, JW Grier, Newell) construction manager has completed paving of the bus lot and shared staff lot with Northridge Middle School. The project has received occupancy approval and staff and students have occupied the building. Site landscaping including trees and shrubs was completed. The classroom floors have been waxed and FF&E installation is installed. Punchlist and project closeout will continue. This new 45-classroom school was occupied August 2023.
Harding High School (17)	\$ 13,747,878	Renovation of the kitchen, cafeteria, existing gym (aux) and the addition of a new gym.	August 2020	Complete	100 %	Project is complete.

**Monthly Project Status**

2017 Bond Summary

August 2023

Project	Current Project Estimate	Project Scope	** Occupy On	Design Phase	Construction Progress	Project Status
JT Williams (17)	\$ 17,032,600	Project includes building renovations to J.T. Williams Montessori magnet.	August 2023	Complete	99 %	The construction manager for JT Williams Secondary Montessori has obtained occupancy approval of the 100 Building. FF&E installation is complete. Two RTU's are temporary units until the permanent mechanical units arrive. The contractors worked diligently towards the August occupancy schedule allowing students and staff to start school in the 200 Building. Punchlist and project closeout continues.
Lansdowne Elementary School (17)	\$ 33,554,188	New 45-classroom school; replaces old school built in 1959 and relieve crowding at Elizabeth Lane ES.	August 2022	Complete	99 %	The Lansdowne Elementary School playfield has been seeded and straw installed. The site contractor continues to work on stabilizing the site. Erosion control perimeter silt fence remains as grassing progresses. The new playgrounds have been installed and opened for students. The site work will be substantially completed in April.
Lincoln Heights Elementary School (17)	\$ 4,588,675	Repurpose and reopen as magnet school.	August 2023	Complete	99 %	The Lincoln Heights Montessori School repurpose project renovations are complete. The building occupancy approvals have been granted and staff has occupied the facility. FF&E has been moved from Trillium Springs. The contractor is working off a minor punch list. The project is now in the closeout phase. The building was occupied in August 2023.
Mint Hill Elementary School (17)	\$ 29,480,274	New 45-classroom elementary school; relieves crowding at Bain, Lebanon Road, Piney Grove.	August 2022	Complete	100 %	The Mint Hill Elementary School project has moved into the closeout phase. The new signal at the entrance to the schools is currently scheduled to occur spring/summer 2023.
Montclair Elementary School (17)	\$ 28,200,634	New 45-classroom replacement facility replacing school built in 1958.	August 2020	Complete	100 %	Project is complete.
Mountain Island Lake Academy (17)	\$ 13,239,686	K-8 Phase 2 - New gymnasium and specialty classrooms.	August 2023	Complete	99 %	The Mountain Island Lake Academy Gym/Classroom Addition construction manager is working on their closeout activities along with punch list items. The new building is occupied.

**Monthly Project Status**

2017 Bond Summary

August 2023

Project	Current Project Estimate	Project Scope	** Occupy On	Design Phase	Construction Progress	Project Status
New Elementary School (Elon, Hawk Ridge, Polo Relief) (17)	\$ 60,641,760	New 45-classroom elementary school to relieve Elon, Hawk Ridge, Polo.	August 2024	Complete	58 %	The New Elementary School (Elon, Hawk Ridge, Polo Relief) construction manager continued to manage multiple trades on the project. The roofer continued with the installation of the roof working towards dry-in of all buildings. The mason continued with interior block walls and installations of brick veneer. The glass and glazing contractor continued with the installation of the window installations throughout the project. The mechanical, electrical, plumbing and fire sprinkler contractors continued with in wall and above ceiling rough-ins throughout the building. The site work contractor began installations of Beau Riley Road along with final grading of the site.
New High School (South, Ardrey) (17)	\$ 146,286,358	New 100 classroom high school to relieve South Mecklenburg, Ardrey Kell and Myers Park HS.	August 2024	Complete	52 %	The New High School (South, Ardrey Relief) construction manager continued with masonry installations, erection of structural steel and exterior metal studs. The roofer continued installations on the buildings with load bearing masonry. The MEP trades began above ceiling rough in on the first and second floor of the classroom wing along with interior metal studs. The site work contractor continued with the final installations of the underground detention, removal of excess soil and installation of the water line. The outbuilding CMU masonry installations continued along with electrical and plumbing rough-ins.
North Academy of World Languages (17)	\$ 41,739,951	New 66 classroom K-8 Language Immersion facility located on the old J.M. Alexander Middle School site.	August 2021	Complete	100 %	Project is complete.
Northwest School of the Arts (17)	\$ 12,167,000	Replace classroom buildings B&D and build classroom addition that supports program. 1st phase includes parking and U/G stormwater.	January 2025	Construction Documents	0 %	The Northwest School of the Arts Phase 1 project has progressed into the construction phase. The Phase 1 design scope includes the underground storm water detention system and new car parking lot in preparation for Phase 2.
Palisades High School (17)	\$ 107,592,534	New 100 classroom high school; relieves crowding at Olympic High School.	August 2022	Complete	99 %	The Palisades High School (fka New High School Olympic Relief) has been occupied by staff and students. The construction manager is in the closeout phase and is working with trade contractors to complete punch list and open issues.

**Monthly Project Status**

2017 Bond Summary

August 2023

Project	Current Project Estimate	Project Scope	** Occupy On	Design Phase	Construction Progress	Project Status
Shamrock Gardens Elementary School (17)	\$ 30,084,692	New 45-classroom replacement facility.	August 2022	Complete	100 %	Project is complete.
Sharon Elementary School (17)	\$ 9,125,862	Add 16 classroom building and increase capacity of cafeteria.	August 2021	Complete	100 %	Project is complete.
South Academy of International Languages (17)	\$ 40,669,909	New 71 classroom K-8 Language Immersion facility located on the old Nations Ford Elementary School site.	August 2021	Complete	100 %	Project is complete.
South Mecklenburg High School (17)	\$ 17,322,927	Renovate/replace two classroom buildings built in 1958 to upgrade learning conditions.	January 2025	Construction Documents	0 %	The South Mecklenburg High School Addition Phase One project work requiring long lead equipment and associated labor was approved by the Board of Education and notice to proceed issued. The remaining scopes of work will be submitted to the Board for award in September. The project consists of a 3-story classroom addition providing 19 classrooms that support the CTE program, visual arts and the JROTC program. The coordination of utility relocations and relocation of the existing mobile classroom units has begun to allow construction of the new building.
South Pine Academy (17)	\$ 30,438,977	New 45-classroom elementary school to relieve Nations Ford, Sterling, and Steele Creek.	August 2021	Complete	100 %	Project is complete.
West Charlotte High School (17)	\$ 104,413,163	New 100 classroom school to replace current facility built in 1954.	August 2022	Complete	99 %	The West Charlotte High School construction manager continued to finalize work on Phase 2 (demolition/site work). The north parking lot and front staff lot are complete. The staff has transitioned from the temporary office/entrance to the new main entrance. The athletic fields are sodded and fencing is finalized. The site contractor paved the old entrance locations along Senior Drive and Southwest Boulevard. This last phase of paving allowed the school to use the completed lot as planned. Punchlist and project closeout continues.
West Mecklenburg High School (17)	\$ 6,259,479	Provide new gymnasium, the existing gymnasium will become the auxilliary.	August 2021	Complete	100 %	Project is complete.

# MWSBE PARTICIPATION REPORT

# Contract Status Report - MWSBE Participation Commitments

Report Date 9/18/2023

Charlotte-Mecklenburg Schools

9/18/2023 8:15:41 AM

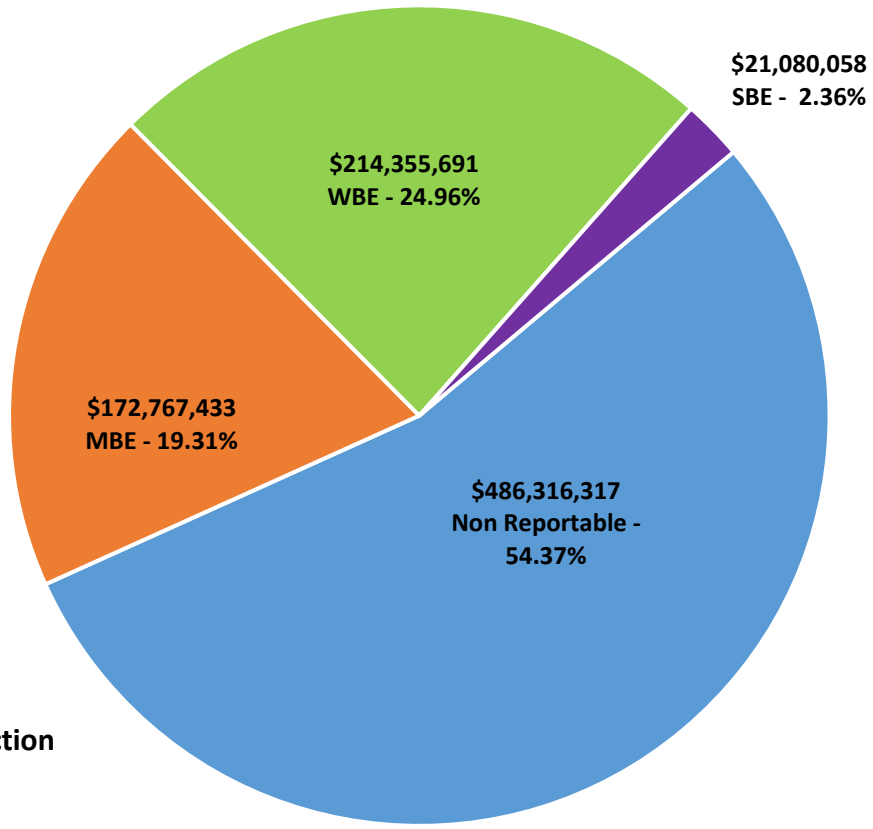
2017 Bond

August 2023 Monthly Bond Report

Facility	Contract Amount	African American MBE\$	%	Other MBE \$	%	Total MBE \$	%	Other WBE \$	%	Other SBE \$	%	Total	%
<u>Briarwood Elementary School (17)</u>	\$28,277,548	\$4,038,457	14.28%	\$2,135,619	7.55%	\$6,174,076	21.83%	\$2,187,249	7.73%	\$187,102	0.66%	\$8,548,427	30.23%
<u>Bruns Avenue Elementary School (17)</u>	\$44,695,023	\$3,060,752	6.85%	\$3,712,721	8.31%	\$6,773,473	15.15%	\$8,463,967	18.94%	\$2,436,151	5.45%	\$17,673,591	39.54%
<u>Career and Technology Education (17)</u>	\$5,594,345	\$522,870	9.35%	\$320,115	5.72%	\$842,985	15.07%	\$203,576	3.64%	\$65,475	1.17%	\$1,112,037	19.88%
<u>Charlotte-Mecklenburg Academy (17)</u>	\$17,035,852	\$198,536	1.17%	\$1,031,692	6.06%	\$1,230,228	7.22%	\$928,655	5.45%	\$13,200	0.08%	\$2,172,083	12.75%
<u>Collinswood Language Academy (17)</u>	\$38,527,704	\$649,307	1.69%	\$1,613,104	4.19%	\$2,262,411	5.87%	\$11,363,565	29.49%	\$8,328	0.02%	\$13,634,304	35.39%
<u>E.E. Waddell (17)</u>	\$2,140,532	\$0	0.00%	\$0	0.00%	\$0	0.00%	\$58,690	2.74%	\$0	0.00%	\$58,690	2.74%
<u>East Mecklenburg High School (17)</u>	\$12,642,198	\$603,811	4.78%	\$532,460	4.21%	\$1,136,271	8.99%	\$490,364	3.88%	\$681,075	5.39%	\$2,307,710	18.25%
<u>Esperanza Global Academy (17)</u>	\$41,224,686	\$8,292,015	20.11%	\$4,662,363	11.31%	\$12,954,378	31.42%	\$24,124,275	58.52%	\$1,512,572	3.67%	\$38,591,225	93.61%
<u>Garinger High School (17)</u>	\$4,338,731	\$383,830	8.85%	\$1,453,894	33.51%	\$1,837,724	42.36%	\$857,883	19.77%	\$251,932	5.81%	\$2,947,539	67.94%
<u>Grove Park Elementary School (17)</u>	\$38,708,900	\$4,897,634	12.65%	\$5,138,568	13.27%	\$10,036,203	25.93%	\$2,302,300	5.95%	\$49,132	0.13%	\$12,387,635	32.00%
<u>Harding High School (17)</u>	\$13,015,986	\$1,504,505	11.56%	\$310,357	2.38%	\$1,814,862	13.94%	\$4,050,417	31.12%	\$36,861	0.28%	\$5,902,139	45.35%
<u>JT Williams (17)</u>	\$15,509,768	\$973,801	6.28%	\$343,427	2.21%	\$1,317,228	8.49%	\$3,638,716	23.46%	\$51,800	0.33%	\$5,007,745	32.29%
<u>Lansdowne Elementary School (17)</u>	\$30,775,402	\$2,809,680	9.13%	\$877,274	2.85%	\$3,686,954	11.98%	\$2,267,461	7.37%	\$223,625	0.73%	\$6,178,040	20.07%
<u>Lincoln Heights Elementary School (17)</u>	\$2,698,300	\$318,959	11.82%	\$18,800	0.70%	\$337,759	12.52%	\$56,330	2.09%	\$74,503	2.76%	\$468,592	17.37%
<u>Mint Hill Elementary School (17)</u>	\$25,910,259	\$5,223,675	20.16%	\$17,791,909	68.67%	\$23,015,584	88.83%	\$1,192,408	4.60%	\$308,370	1.19%	\$24,516,362	94.62%
<u>Montclair Elementary School (17)</u>	\$26,093,784	\$3,593,852	13.77%	\$2,260,381	8.66%	\$5,854,233	22.44%	\$5,757,423	22.06%	\$493,707	1.89%	\$12,105,363	46.39%
<u>Mountain Island Lake Academy (17)</u>	\$12,514,576	\$175,291	1.40%	\$833,532	6.66%	\$1,008,823	8.06%	\$869,343	6.95%	\$15,300	0.12%	\$1,893,466	15.13%
<u>New Elementary School (Elon, Hawk R</u>	\$45,539,599	\$5,073,500	11.14%	\$1,356,642	2.98%	\$6,430,142	14.12%	\$10,805,612	23.73%	\$2,002,841	4.40%	\$19,238,595	42.25%
<u>New High School (South, Ardrey) (17)</u>	\$132,951,739	\$3,217,133	2.42%	\$4,883,320	3.67%	\$8,100,453	6.09%	\$12,420,994	9.34%	\$4,193,309	3.15%	\$24,714,757	18.59%
<u>North Academy of World Languages (</u>	\$38,090,783	\$1,770,068	4.65%	\$1,575,864	4.14%	\$3,345,931	8.78%	\$3,468,574	9.11%	\$436,793	1.15%	\$7,251,298	19.04%
<u>Northwest School of the Arts (17)</u>	\$9,046,489	\$0	0.00%	\$37,000	0.41%	\$37,000	0.41%	\$29,335	0.32%	\$0	0.00%	\$66,335	0.73%
<u>Palisades High School (17)</u>	\$98,070,130	\$13,504,638	13.77%	\$7,587,760	7.74%	\$21,092,398	21.51%	\$13,853,217	14.13%	\$2,996,568	3.06%	\$37,942,182	38.69%
<u>Shamrock Gardens Elementary School</u>	\$27,189,620	\$2,478,054	9.11%	\$1,636,383	6.02%	\$4,114,438	15.13%	\$21,087,460	77.56%	\$259,554	0.95%	\$25,461,452	93.64%
<u>Sharon Elementary School (17)</u>	\$8,534,491	\$326,844	3.83%	\$283,497	3.32%	\$610,341	7.15%	\$926,873	10.86%	\$217,984	2.55%	\$1,755,197	20.57%

Facility	Contract Amount	African American MBE\$	%	Other MBE \$	%	Total MBE \$	%	Other WBE \$	%	Other SBE \$	%	Total	%
<u>South Academy of International Langu</u>	\$37,073,557	\$6,023,142	16.25%	\$2,431,071	6.56%	\$8,454,213	22.80%	\$10,945,346	29.52%	\$313,999	0.85%	\$19,713,558	53.17%
<u>South Mecklenburg High School (17)</u>	\$7,138,987	\$0	0.00%	\$0	0.00%	\$0	0.00%	\$0	0.00%	\$0	0.00%	\$0	0.00%
<u>South Pine Academy (17)</u>	\$26,161,268	\$916,165	3.50%	\$19,014,076	72.68%	\$19,930,241	76.18%	\$4,342,256	16.60%	\$237,754	0.91%	\$24,510,251	93.69%
<u>West Charlotte High School (17)</u>	\$95,209,851	\$14,357,815	15.08%	\$5,218,058	5.48%	\$19,575,873	20.56%	\$65,599,651	68.90%	\$3,728,348	3.92%	\$88,903,872	93.38%
<u>West Mecklenburg High School (17)</u>	\$9,809,391	\$283,809	2.89%	\$509,403	5.19%	\$793,212	8.09%	\$2,063,752	21.04%	\$283,775	2.89%	\$3,140,740	32.02%
<b>Grandtotal</b>	<b>\$894,519,499</b>	<b>\$85,198,143</b>	<b>9.52%</b>	<b>\$87,569,290</b>	<b>9.79%</b>	<b>\$172,767,433</b>	<b>19.31%</b>	<b>\$214,355,691</b>	<b>23.96%</b>	<b>\$21,080,058</b>	<b>2.36%</b>	<b>\$408,203,182</b>	<b>45.63%</b>

### MWSBE Participation 2017 Bond Projects



**Design and Construction  
Contract Total  
\$894,519,499**



# MONTHLY PROJECT PHOTOS



New ES Elon Park, Hawk Ridge, Polo Ridge

# PROJECT PROGRESS PHOTOS



New ES Elon Park, Hawk Ridge, Polo Ridge

# PROJECT PROGRESS PHOTOS



New ES Elon Park, Hawk Ridge, Polo Ridge

# PROJECT PROGRESS PHOTOS



New ES Elon Park, Hawk Ridge, Polo Ridge

# PROJECT PROGRESS PHOTOS



New HS Ardrey Kell, South Mecklenburg

# PROJECT PROGRESS PHOTOS

---



New HS Ardrey Kell, South Mecklenburg

# PROJECT PROGRESS PHOTOS

---



New HS Ardrey Kell, South Mecklenburg



# PROJECT PROGRESS PHOTOS



New HS Ardrey Kell, South Mecklenburg



Esperanza Global Academy



Esperanza Global Academy



Esperanza Global Academy



Esperanza Global Academy

# PROJECT PROGRESS PHOTOS

---



Grove Park Elementary School

# PROJECT PROGRESS PHOTOS

---



Grove Park Elementary School



Grove Park Elementary School





Mountain Island Lake Academy



Mountain Island Lake Academy

# PROJECT PROGRESS PHOTOS



Mountain Island Lake Academy

# PROJECT PROGRESS PHOTOS

---



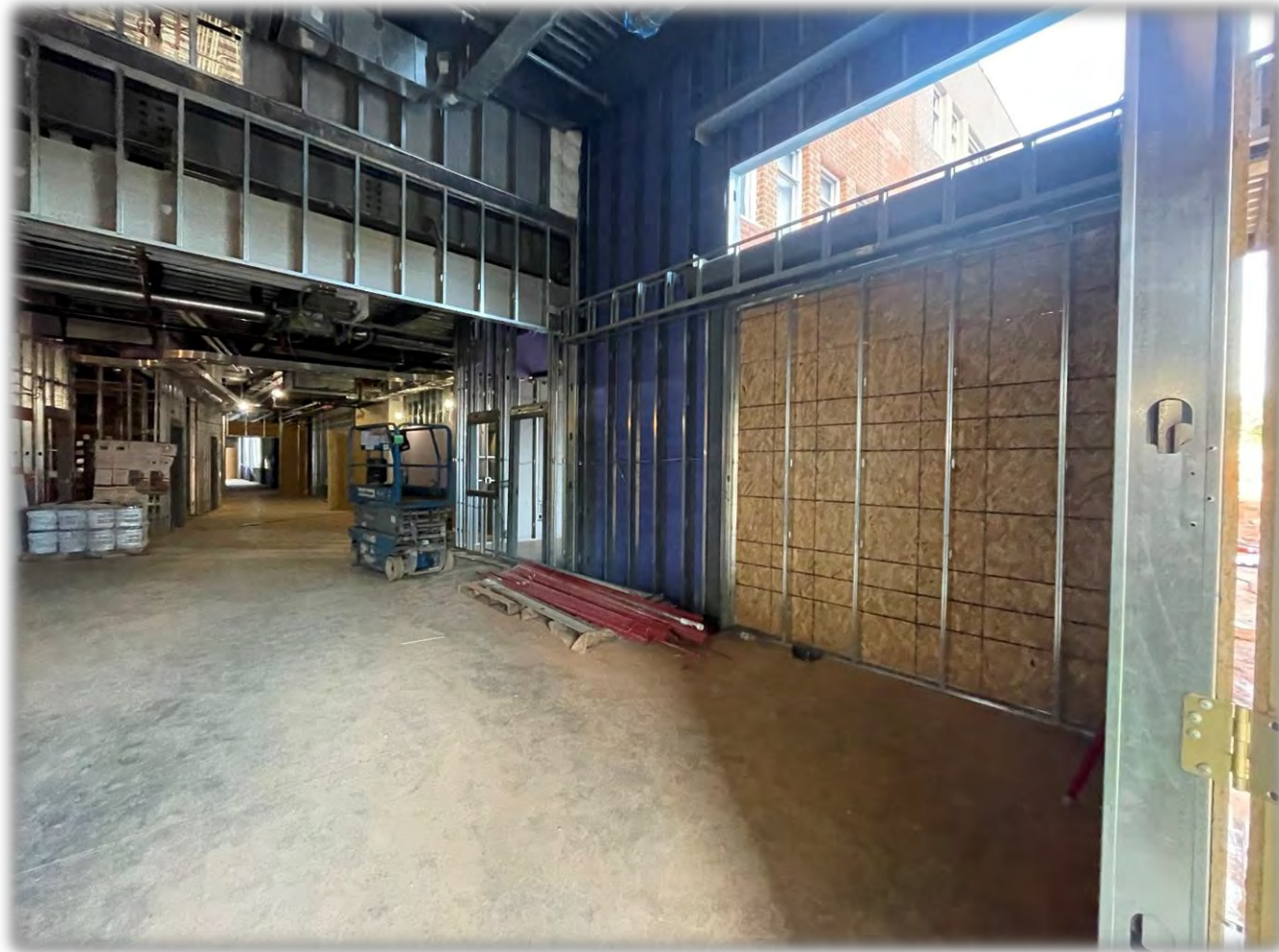
Bruns Elementary School Replacement

# PROJECT PROGRESS PHOTOS

---



Bruns Elementary School Replacement



Bruns Elementary School Replacement



Lincoln Heights

# PROJECT PROGRESS PHOTOS

---



Lincoln Heights



# PROJECT PROGRESS PHOTOS

---



West Charlotte High School Phase 2



West Charlotte High School Phase 2

# PROJECT CONTROLS

**CHARLOTTE-MECKLENBURG BOARD OF EDUCATION  
2013 BOND SERIES-CAPITAL IMPROVEMENT PROGRAMS  
BUDGET STATUS REPORT**

	Original Project Budget	Current Project Budget	Committed Amount	Approved Change Orders	Total Committed	Pending Commitments	To Be Committed	Prev Paid To Date	Paid To Date	Balance To Complete	Monthly Expenditure
	(A)	(B)	(C)	(D)	(E)=C+D	(F)	(G)=(B-E-F)	(H)	(I)	(J)=(B-I)	(K)=(I-H)
<b><u>A. REPLACEMENT &amp; RENOVATIONS</u></b>											
1 Career & Technology Education Institutes Phase 1:	\$8,640,000	\$18,697,857	\$6,811,184	\$11,886,062	\$18,697,246	\$0	\$611	\$18,563,909	\$18,605,648	\$92,209	\$41,739
2 Davidson K-8 Conversion	\$9,500,000	\$13,461,149	\$2,131,151	\$11,329,998	\$13,461,149	\$0	\$0	\$13,461,149	\$13,461,149	\$0	\$0
3 J.M. Alexander Middle Replacement	\$30,672,000	\$29,845,539	\$4,502,518	\$25,343,021	\$29,845,539	\$0	\$0	\$29,845,539	\$29,845,539	\$0	\$0
4 Nations Ford Elementary Replacement	\$19,440,000	\$19,231,604	\$3,958,871	\$15,272,733	\$19,231,604	\$0	\$0	\$19,231,604	\$19,231,604	\$0	\$0
5 Northwest School of the Arts	\$12,420,000	\$12,868,718	\$2,047,917	\$10,820,801	\$12,868,718	\$0	\$0	\$12,868,719	\$12,868,719	\$0	\$0
6 Oakhurst STEAM Magnet Elementary/Starmount	\$5,940,000	\$5,407,812	\$3,471,397	\$1,936,415	\$5,407,812	\$0	\$0	\$5,407,812	\$5,407,812	\$0	\$0
7 Pre-K-8 Conversions Phase II: Ashley Park/ Bruns	\$24,732,000	\$19,700,807	\$4,167,671	\$15,533,138	\$19,700,809	\$0	\$0	\$19,700,807	\$19,700,807	\$0	\$0
8 Selwyn Elementary	\$2,592,000	\$4,624,831	\$744,799	\$3,880,032	\$4,624,831	\$0	\$0	\$4,624,831	\$4,624,831	\$0	\$0
9 Statesville Road Elementary	\$20,340,000	\$20,648,509	\$5,081,473	\$15,567,037	\$20,648,509	\$0	\$0	\$20,648,509	\$20,648,509	\$0	\$0
10 West Mecklenburg HS	\$0	\$3,993,543	\$3,993,543	\$0	\$3,993,543	\$0	\$0	\$3,993,543	\$3,993,543	\$0	\$0
<b>Total Replacement &amp; Renovations</b>	<b>\$134,276,000</b>	<b>\$148,480,367</b>	<b>\$36,910,523</b>	<b>\$111,569,237</b>	<b>\$148,479,760</b>	<b>\$0</b>	<b>\$612</b>	<b>\$148,346,421</b>	<b>\$148,388,160</b>	<b>\$92,207</b>	<b>\$41,739</b>
<b><u>B. RESPONSE TO ENROLLMENT GROWTH</u></b>											
1 East Mecklenburg High Addition	\$12,744,000	\$12,083,804	\$4,465,200	\$7,618,603	\$12,083,803	\$0	\$0	\$12,083,803	\$12,083,803	\$0	\$0
2 Myers Park High Addition	\$22,248,000	\$11,040,942	\$1,207,493	\$9,833,448	\$11,040,942	\$0	\$0	\$11,040,941	\$11,040,941	\$0	\$0
3 Northridge Middle Addition	\$6,448,000	\$6,366,170	\$2,114,306	\$4,251,865	\$6,366,171	\$0	\$0	\$6,366,171	\$6,366,171	\$0	\$0
4 Olympic High Addition/Renovation	\$8,964,000	\$8,947,310	\$2,002,694	\$6,944,615	\$8,947,310	\$0	\$0	\$8,947,310	\$8,947,310	\$0	\$0
5 South Mecklenburg High Addition	\$18,360,000	\$16,307,355	\$2,922,282	\$13,385,073	\$16,307,355	\$0	\$0	\$16,307,355	\$16,307,355	\$0	\$0
6 Charlotte East Language Academy (FKA -New Lang	\$30,376,000	\$31,387,929	\$5,740,182	\$25,647,747	\$31,387,929	\$0	\$0	\$31,387,929	\$31,387,929	\$0	\$0
7 Rea Farms STEAM Academy	\$31,376,000	\$40,476,000	\$9,077,465	\$29,821,441	\$38,898,906	\$0	\$1,577,094	\$38,898,906	\$38,898,906	\$1,577,094	\$0
8 Renaissance West STEAM Academy (FKA New Pre-	\$30,376,000	\$31,698,952	\$5,667,388	\$26,031,564	\$31,698,952	\$0	\$0	\$31,698,952	\$31,698,952	\$0	\$0
9 New High School - South Meck/Ardrey Kell Relief *	\$0	\$9,278,699	\$9,278,699	\$0	\$9,278,699	\$0	\$0	\$9,278,699	\$9,278,699	\$0	\$0
<b>Total Response to Enrollment Growth</b>	<b>\$160,892,000</b>	<b>\$167,587,161</b>	<b>\$42,475,710</b>	<b>\$123,534,357</b>	<b>\$166,010,067</b>	<b>\$0</b>	<b>\$1,577,094</b>	<b>\$166,010,066</b>	<b>\$166,010,066</b>	<b>\$1,577,095</b>	<b>\$0</b>
<b><u>C. CONTINGENCY</u></b>											
	\$0	\$0	\$0	\$0	\$0	\$0	\$0	\$0	\$0	\$0	\$0
<b>Total Contingency</b>	<b>\$0</b>	<b>\$0</b>	<b>\$0</b>	<b>\$0</b>	<b>\$0</b>	<b>\$0</b>	<b>\$0</b>	<b>\$0</b>	<b>\$0</b>	<b>\$0</b>	<b>\$0</b>
<b>TOTAL LOCAL BOND PROGRAM</b>	<b>\$295,168,000</b>	<b>\$316,067,527</b>	<b>\$79,386,233</b>	<b>\$235,103,594</b>	<b>\$314,489,827</b>	<b>\$0</b>	<b>\$1,577,706</b>	<b>\$314,356,487</b>	<b>\$314,398,226</b>	<b>\$1,669,301</b>	<b>\$41,739</b>

Original project estimated costs approved by the Board Of Education on July 23, 2013 and approved by the voters of Mecklenburg County on November 5, 2013.

Note: Mecklenburg County's appropriated interest from COPS to increase funding for the 2013 Bond Program.

**CHARLOTTE-MECKLENBURG BOARD OF EDUCATION  
2017 BOND SERIES-CAPITAL IMPROVEMENT PROGRAMS  
BUDGET STATUS REPORT**

	Original Project Budget	Current Project Budget	Committed Amount	Approved Change Orders	Total Committed	Pending Commitments	To Be Committed	Prev Paid To Date	Paid To Date	Balance To Complete	Monthly Expenditure
	(A)	(B)	(C)	(D)	(E)=C+D	(F)	(G)=(B-E-F)	(H)	(I)	(J)=(B-I)	(K)=(I-H)
<b><u>A. REPLACEMENT &amp; RENOVATIONS</u></b>											
1 Briarwood Elementary *	\$29,091,619	\$31,243,191	\$4,730,710	\$26,410,339	\$31,141,049	(\$1,500)	\$103,642	\$31,135,254	\$31,135,378	\$107,812	\$124
2 Bruns Academy Replacement	\$34,207,808	\$48,890,679	\$4,123,930	\$42,406,336	\$46,530,266	\$1,500	\$2,358,913	\$10,998,910	\$12,484,094	\$36,406,585	\$1,485,185
3 Career & Technology Education Upgrades	\$10,101,734	\$9,659,765	\$2,290,761	\$3,766,908	\$6,057,669	(\$176)	\$3,602,272	\$5,706,343	\$5,716,648	\$3,943,117	\$10,305
4 Collinswood K-8 *	\$44,172,540	\$41,412,015	\$4,927,263	\$36,484,752	\$41,412,015	\$0	\$0	\$41,401,384	\$41,401,384	\$10,631	\$0
5 East Mecklenburg HS	\$12,771,594	\$10,231,911	(\$1,659,510)	\$11,823,832	\$10,164,322	\$0	\$67,590	\$10,132,098	\$10,141,268	\$90,643	\$9,170
6 Garinger HS	\$13,936,979	\$5,236,979	\$1,621,317	\$3,534,819	\$5,156,136	\$0	\$80,843	\$4,252,868	\$4,253,414	\$983,565	\$547
7 Harding University High *	\$18,330,263	\$13,747,878	\$2,045,267	\$11,702,610	\$13,747,877	\$0	\$0	\$13,747,877	\$13,747,877	\$0	\$0
8 Charlotte-Mecklenburg Academy (FKA -EC Specialty	\$18,957,960	\$17,699,220	\$2,175,504	\$15,523,717	\$17,699,220	\$0	\$0	\$17,699,220	\$17,699,220	\$0	\$0
9 Lansdowne Elementary	\$29,391,270	\$33,554,188	\$3,974,250	\$29,465,004	\$33,439,254	\$41,075	\$73,860	\$32,130,314	\$32,148,585	\$1,405,604	\$18,271
10 Lincoln Heights Elementary	\$3,740,478	\$4,588,675	\$2,711,801	\$817,550	\$3,529,352	\$0	\$1,059,323	\$2,208,986	\$2,510,430	\$2,078,245	\$301,443
11 Montclair Elementary Replacement *	\$28,559,390	\$28,200,634	\$2,426,761	\$25,773,873	\$28,200,634	\$0	\$0	\$28,200,634	\$28,200,634	\$0	\$0
12 Mountain Island k-8	\$9,218,439	\$13,239,686	\$1,662,844	\$11,418,864	\$13,081,708	\$12,000	\$145,978	\$10,515,855	\$11,259,956	\$1,979,731	\$744,100
13 Northwest School of the Arts	\$17,632,202	\$12,167,000	\$5,232,479	\$4,692,496	\$9,924,975	\$0	\$2,242,025	\$1,772,334	\$1,792,856	\$10,374,144	\$20,522
14 Shamrock Gardens Elementary *	\$29,890,351	\$30,084,692	\$3,422,159	\$26,234,783	\$29,656,942	\$0	\$427,750	\$29,268,110	\$29,280,539	\$804,153	\$12,428
15 Sharon Elementary	\$7,706,528	\$9,125,862	\$1,430,125	\$7,675,679	\$9,105,804	\$0	\$20,058	\$9,079,791	\$9,079,791	\$46,071	\$0
16 South Mecklenburg HS	\$13,352,143	\$17,322,927	\$1,859,406	\$5,852,296	\$7,711,702	\$8,358,645	\$1,252,580	\$765,386	\$773,286	\$16,549,641	\$7,900
17 E.E. Waddell Magnet HS	\$4,571,709	\$5,137,367	\$2,919,486	\$356,383	\$3,275,869	\$0	\$1,861,498	\$2,212,272	\$2,674,707	\$2,462,660	\$462,434
18 West Charlotte HS Replacement	\$109,977,166	\$104,413,163	\$11,839,610	\$91,558,299	\$103,397,909	\$31,500	\$983,754	\$98,516,982	\$99,648,658	\$4,764,505	\$1,131,676
19 West Mecklenburg HS	\$11,065,440	\$6,259,479	(\$2,371,639)	\$8,631,118	\$6,259,479	\$0	\$0	\$6,260,654	\$6,260,654	\$0	\$0
20 John Taylor Williams	\$13,964,339	\$17,032,600	\$3,577,047	\$12,492,488	\$16,069,535	\$185,085	\$777,980	\$12,112,339	\$12,953,971	\$4,078,629	\$841,632
<b>Total Replacement &amp; Renovations</b>	<b>\$460,639,952</b>	<b>\$459,247,911</b>	<b>\$58,939,571</b>	<b>\$376,622,145</b>	<b>\$435,561,716</b>	<b>\$8,628,129</b>	<b>\$15,058,066</b>	<b>\$368,117,612</b>	<b>\$373,163,350</b>	<b>\$86,084,561</b>	<b>\$5,045,738</b>
<b><u>B. RESPONSE TO ENROLLMENT GROWTH</u></b>											
1 South Academy of International Languages	\$45,359,367	\$40,669,909	\$5,953,333	\$34,716,308	\$40,669,641	\$0	\$268	\$40,586,977	\$40,586,977	\$82,932	\$0
2 North Academy of World Languages (FKA - New K-8	\$45,359,367	\$41,739,951	\$6,022,055	\$35,717,896	\$41,739,951	\$0	\$0	\$41,742,062	\$41,742,062	\$0	\$0
3 South Pine Academy (FKA - New ES Nations Ford, S	\$29,173,829	\$30,438,977	\$6,842,534	\$23,596,443	\$30,438,977	\$0	\$0	\$30,477,421	\$30,477,421	\$0	\$0
4 Mint Hill Elementary School	\$29,988,332	\$29,480,274	\$3,296,439	\$25,964,556	\$29,260,995	\$0	\$219,279	\$29,010,140	\$29,022,605	\$457,670	\$12,465
5 Esperanza Global Academy (FKA New ES - Windsor	\$30,422,230	\$45,297,022	\$13,232,029	\$31,555,591	\$44,787,619	\$74,825	\$434,577	\$35,274,085	\$37,783,221	\$7,513,801	\$2,509,137
6 New Elementary School - Elon/Hawk Ridge Relief *	\$30,426,712	\$60,641,761	\$16,479,717	\$43,464,051	\$59,943,768	\$18,400	\$679,592	\$37,104,794	\$39,681,158	\$20,960,603	\$2,576,364
7 Grove Park Elementary (FKA New ES - Hidden Valle	\$30,518,345	\$44,079,387	\$6,419,046	\$36,697,109	\$43,116,155	\$8,000	\$955,232	\$33,762,158	\$36,605,848	\$7,473,539	\$2,843,690
8 Palisades High School	\$109,908,793	\$107,592,534	\$10,898,816	\$96,401,797	\$107,300,613	\$20,042	\$271,879	\$105,414,230	\$105,568,946	\$2,023,588	\$154,716
9 New High School - South Meck/Ardrey Kell Relief *	\$110,287,621	\$146,286,358	\$11,058,495	\$125,664,701	\$136,723,195	\$5,641,410	\$3,921,752	\$66,404,750	\$71,035,863	\$75,250,495	\$4,631,113
<b>Total Response to Enrollment Growth</b>	<b>\$461,444,596</b>	<b>\$546,226,173</b>	<b>\$80,202,464</b>	<b>\$453,778,451</b>	<b>\$533,980,915</b>	<b>\$5,762,678</b>	<b>\$6,482,580</b>	<b>\$419,776,617</b>	<b>\$432,504,101</b>	<b>\$113,722,072</b>	<b>\$12,727,484</b>
<b><u>C. CONTINGENCY</u></b>											
	\$0	\$0	\$0	\$0	\$0	\$0	\$0	\$0	\$0	\$0	\$0
<b>Total Contingency</b>	<b>\$0</b>	<b>\$0</b>	<b>\$0</b>	<b>\$0</b>	<b>\$0</b>	<b>\$0</b>	<b>\$0</b>	<b>\$0</b>	<b>\$0</b>	<b>\$0</b>	<b>\$0</b>

**CHARLOTTE-MECKLENBURG BOARD OF EDUCATION  
2017 BOND SERIES-CAPITAL IMPROVEMENT PROGRAMS  
BUDGET STATUS REPORT**

	Original Project Budget	Current Project Budget	Committed Amount	Approved Change Orders	Total Committed	Pending Commitments	To Be Committed	Prev Paid To Date	Paid To Date	Balance To Complete	Monthly Expenditure
	(A)	(B)	(C)	(D)	(E)=C+D	(F)	(G)=(B-E-F)	(H)	(I)	(J)=(B-I)	(K)=(I-H)
<b>TOTAL LOCAL BOND PROGRAM</b>	<b>\$922,084,548</b>	<b>\$1,005,474,084</b>	<b>\$139,142,035</b>	<b>\$830,400,596</b>	<b>\$969,542,631</b>	<b>\$14,390,806</b>	<b>\$21,540,646</b>	<b>\$787,894,229</b>	<b>\$805,667,451</b>	<b>\$199,806,633</b>	<b>\$17,773,222</b>

Original project estimated costs approved by the Board Of Education on July 25, 2017 approved by the voters of Mecklenburg County on November 7, 2017.

\*Project included in \$33.2M early funding approved by Board Of Education on August 9, 2016 and Mecklenburg Board of County Commissioners on September 6, 2016. On February 19, 2019 an additional \$8M was approved for New Elementary School - Elon/Hawk Ridge Relief site.

\*Current Budget includes an additional \$89.2M to fund increase land and construction costs. The additional funds were approved by the Board of County Commissioners on June 16, 2020.

The New Elementary School - Elon/Hawk Ridge Relief current Budget includes 6.8M for Park and Recreation Project.

Bruns Academy Replacement current budget includes \$1.5M for Park and Recreation Project.

Current Program Budget reflects a reclass of \$7.4M in expenditures to 2007 Bond Program and \$14.4M in expenditures to 2013 Bond Program.

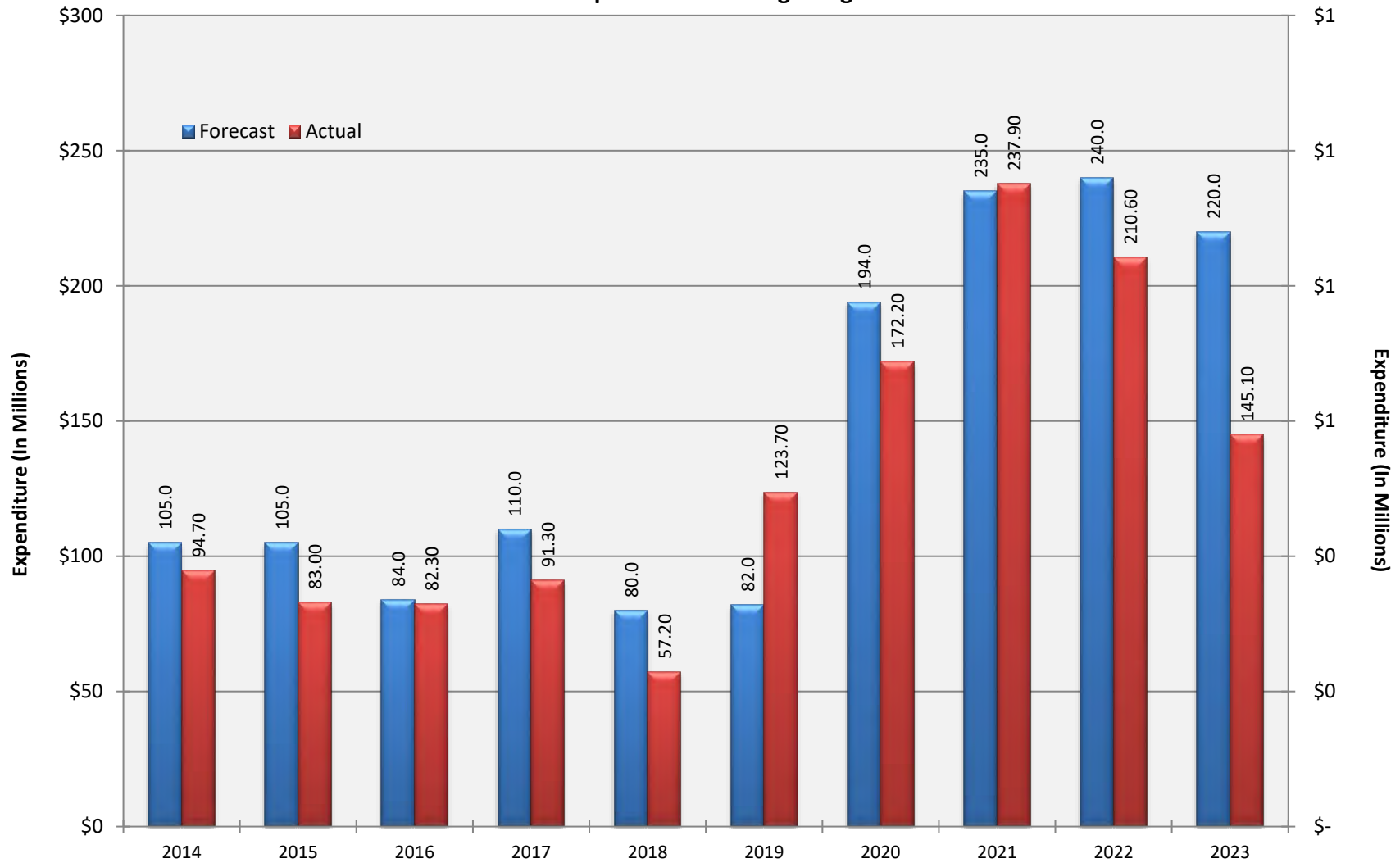
**Charlotte-Mecklenburg Board of Education  
Approved Construction or Repair Change Orders\*  
Reporting Period: August 2023**

<b>Funding Source</b>	<b>Project Name</b>	<b>Contractor</b>	<b>Description</b>	<b>Change Order Amount</b>	<b>Revised Contract Value</b>
2017 Bond	Esperanza Global Academy (17)	Rodgers Builders, Inc.	Stainless Steel Flashing, Fire Suppresion Piping, Aluminum Fencing, Misc building and Site Changes, Contingency Adjustments	\$0.00	\$36,563,660.00
2017 Bond	West Charlotte High School (17)	RODGERS-HOLT BROTHERS, a Joint Venture	Sod ILO Sprigging at Baseball & Softball, Provide Pavement Markings, Future Parking Lot Numbering, Step Down Footings at Baseball Concessions Building, Provide Flag Pole Lights, , Added Exterior Wall Mounted Cameras, Add Signage at Pool Equipment Rooms, Contingency and Allowance Reconciliations	\$0.00	\$88,823,672.00

\* Not previously presented to the Board of Education for Approval

# 10 YEAR EXPENDITURE SUMMARY

Forecast Expenditure versus Actual Expenditures through August 2023





# GLOSSARY

# Glossary

---

---

- **Project Management** – This section includes updates from our project managers and describes the currently active construction projects. This includes from Board of Education award thru final completion.
- **Design and Bidding** – This section contains updates from our design managers on the projects currently in the design phase. This phase from design award to Board of Education award of construction.
- **Controls** – Section includes misc. updates from controls group including expenditures, related Board of Education awards during the reporting period, cash flow information. This section covers all projects from approved bond through final expenditures and bond close with the county.
- **MWSBE** – Contains updates from the MWSBE Director and team, including current activity and summaries of the participation by MWSBE providers on our program.
- **Bond Progress Summary** – Provides a summary of bond financials including bond value, committed/pending amounts, paid to date, expended this month.
- **Project Procurement Dates** - Next 90 Days major project bid activity.
- **Mobile Swing Space Utilization** – Includes a summary of program related swing space currently in use and the schedule of use.
- **Bond Summary Schedule** – Current program summary schedule including planned design, construction and FF&E. These activities are fed from detailed schedules and are fine-tuned as project information is available.
- **Project Contractor Teams**; Provides summary of turnover dates for completed/closed projects since 2010 including architects/designers and contractors.
- **School Site Location Maps** – General location of bond projects (2017) by type.
- **Project Status Report** – This section of the report provides a summary of the bond project scope, current estimate (all sources), planned occupancy/actual occupancy date. It also provides a current status of the design phase, construction progress and a brief update. The report currently includes 2013 and 2017 bond projects that have or will be completed after to August 2016.
- **MWSBE Participation Report** – The MWSBE report provides a summary of the participation on the 2013 & 2017 Bond funded projects.
- **Project Progress Photos** – Includes photos of active construction projects.
- **Budget Summary Reports** – These reports are by funding source and summarize financial activity to date on the projects. This includes original and current project estimates, committed values, amounts paid to date, balances and monthly expenditures.
- **Change Orders < \$90,000** – This month's approved construction or repair change orders < \$90,000.
- **Expenditure Summary** – Provides a summary of Bond Expenditures by calendar year.