

Capital Improvement Program

Monthly Bond Report
July 2023



Bruns Elementary School Replacement



CAPITAL PROGRAM SERVICES

Capital Improvement Program

JULY 2023

MONTHLY BOND REPORT

PROGRAM OVERVIEW

- Project Management
- Design and Bidding
- Controls
- MWSBE
- Bond Progress Summary
- Project Procurement - Next 90 Days
- Bond Summary Schedule
- Project Contractor Teams; Projects in Design/Construction and Substantially Completed/Closed
- School Site Location Maps
 - Elementary Schools
 - Middle Schools
 - High Schools & Specialty Schools

PROJECT STATUS REPORT

MWSBE PARTICIPATION REPORT

PROJECT PROGRESS PHOTOS

PROJECT CONTROLS

- Budget Summary Reports
 - 2013 Bond Series
 - 2017 Bond Series
- Change Orders < \$90,000
- Expenditure Summary

GLOSSARY

PROGRAM OVERVIEW

PROJECT MANAGEMENT

The following is a summary of the activity on the bond-funded projects in construction during the month of July.

The **Bruns Elementary School Replacement** continued to focus on the structure of the building. The structural steel continued with the installation of the classroom structural steel along with the slab on deck being poured on floors two and three. The plumbing and electrical work continued on the underground rough-ins in the administration and kitchen areas. The metal stud contractor mobilized and began installations of the exterior studs. The mason continued with below grade masonry and interior walls. The new building is scheduled for occupancy August of 2024. The demolition of the old building and associated site work will commence once the new building is occupied. This new replacement facility is scheduled to be completed in summer 2025.

The **Esperanza Global Academy** (*fka New ES Windsor, Winterfield, idlemwild Relief*) construction manager has completed paving of the bus and staff lots. Site landscaping including trees and shrubs is progressing. Bermuda sod is down at the K-1 courtyard. Building finishes are being finalized. Classroom floors are waxed and FF&E installation will begin in a few weeks. The punch list has been generated. Staff occupancy will occur in mid-August. This new 45-classroom school will be ready for occupancy August 2023.

The construction manager for the **Garinger Addition and Renovation** project has completed commissioning activities for the 300 Building renovations. The replacement glass and glazing work is 98% complete. The building was occupied in January 2023.

The **Grove Park Elementary School** (*fka New ES Hidden Valley, JW Grier, Newell*) construction manager has completed paving of the bus lot and shared staff lot with Northridge Middle. Sod is being installed in areas around the building and playground installations are being completed. Building finishes are being finalized and the punch list has been generated. The classroom floors have been waxed and FF&E installation will begin in a few weeks. Staff occupancy will occur in mid-August. This new 45-classroom will be ready for occupancy August 2023.

The construction manager for **JT Williams Secondary Montessori** has obtained occupancy approval of the 100 Building. FF&E installation is complete. Two RTU's are temporary units until the permanent mechanical units arrive. The 200 Building renovations continue with final finishes and the installation of the new RTU is underway. The contractors continue to work diligently towards the August occupancy schedule allowing students and staff to start school in the 200 Building.

The **Lincoln Heights Montessori School** repurpose project renovations are near completion. The building occupancy approvals have been granted and staff has occupied the facility. FF&E has been moved from Trillium Springs. The contractor is working off a minor punch list. The project will now move into the closeout phase. The building is ready for occupancy August 2023.

The **Mountain Island Lake Academy Gym/Classroom Addition** construction manager is working on their closeout activities along with punch lists. The new building is scheduled for occupancy August 2023.

The **New Elementary School (Elon, Hawk Ridge, Polo Relief)** construction manager continued to manage multiple trades on the project. The mason continued brick installations on the building and recreation center. Exterior studs were installed along with the sheathing. The storefront window frames and glass continues to be installed throughout the building. The MEP trades continue their above ceiling and in wall rough-in throughout the building. Roadwork on Ardrey Kell and the intersection with Beau Riley is scheduled for to begin next month. The new 45-classroom elementary school is located across from the Ardrey Kell High School and is scheduled for occupancy August 2024.

The **New High School (South, Ardrey Relief)** construction manager continued with masonry installations, erection of structural steel and exterior metal studs. The roofer continued installations on the buildings with load bearing masonry. The MEP trades began above ceiling rough-in on the first and second floor of the classroom wing along with interior metal studs. The site work contractor continued with the final installations of the underground detention, removal of excess soil and installation of the water line. The outbuilding CMU masonry installations continued along with electrical and plumbing rough-ins. The new 100-classroom relief high school is scheduled for occupancy August 2024.

The **West Charlotte High School** construction manager continues to work on the Phase Two (demolition/site work). The north parking lot and front staff lot are complete. The staff has transitioned from the temporary office/entrance to the new main entrance. The athletic fields have been sodded and fencing is being finalized. The site contractor will be paving the old entrance locations along Senior Drive and Southwest Boulevard. The last phase of paving the bus lot will allow the school to use the completed lot as planned. The demolition and site work will be completed in August 2023.

DESIGN AND BIDDING

The following is a summary of the activity on the bond-funded projects in design and bidding phase during the month of July.

The **Northwest School of the Arts** project has achieved building permit approval for Phase One. The Phase One design scope includes the underground storm water detention system and new car parking lot in preparation for Phase Two. The car parking modifications are scheduled to begin late summer of 2023. Phase Two design documents have been reviewed by CMS staff and comments have been submitted for incorporation. The design project has progressed into the construction document phase. Phase Two scope includes a new administration, visual/performing arts building and other campus renovations.

The **South Mecklenburg High School Addition** Phase One project work requiring long lead equipment and associated labor was approved by the Board of Education and notice to proceed issued. The remaining scopes of work will be submitted to the Board for award in September. The project consists of a 3-story classroom addition providing 19 classrooms that support the CTE program, visual arts and the JROTC program. The coordination of utility relocations and relocation of the existing mobile classroom units has begun to allow construction of the new building. Occupancy of the new building is scheduled January 2025.

CONTROLS

Expenditures for the month of July were \$16.9M against the 2024 fiscal year cash flow projection of \$165M. Mecklenburg Board of County Commissioners approved the fiscal year 2024 Capital Project Ordinance authorizing funding for eight 2024 Capital Improvement Program projects. The total authorization for the projects is \$907.1M. The Controls team is setting up the controls for the authorized projects. Additionally, the Controls Team continues the review of completed purchase orders and closing them out. Available funding identified from completed purchase orders are being accumulated to be used for future capital needs.

Board of Education approval was received on July 11, 2023 for Phase one construction of the Northwest School of the Arts project.

The Controls team continues to submit notices of potential changes at school sites so senior staff can adequately evaluate any issues. Additionally, the Controls team continues the processing of contracts, invoices, preparing notices of potential change, change orders, pay applications, and check requests for projects under construction. Captured

construction cost data is used to prepare financial reports such as detailed cost reports, budget summaries, reconciliation to CMS books, revisions to and updated cash flows and complete special financial requests by CMS and Mecklenburg County. This process, along with data compilation and management, allows senior staff to provide the proper guidance/direction and accurate information to the program stakeholders.

MWSBE

As of July 2023 the overall MWSBE utilization percentage related to design and construction of the 2017 bond projects is 45.60% which includes 19.30% participation by minority contractors, 24.43% by women contractors and 1.87% participation by small business contractors. This accounts for more than \$407 million of utilization by Minority, Women and Small Business Contractors.

The Diversity & Inclusion Office of Charlotte-Mecklenburg Schools continued to conduct several individual virtual orientations with new MWSBE contractors and prime contractors. In addition, team members also attended/hosted the following outreach sessions/pre-bid meetings and/or workforce development opportunities:

Outreach Sessions:

- Construction Manager-at-Risk pre-proposal conference hosted by CMS
- NC MWBE Coordinators' Network quarterly meeting
- South Mecklenburg Pre-Bid Meeting hosted by Balfour Beatty
- Charlotte MED Week Planning Meeting

Workforce Development:

CMS Office of Diversity & Inclusion and Capital Program Services hosted two (2) CMS student summer interns through the Mayor's Youth Employment Program (MYEP) and one (1) college intern. The interns participated in virtual and in-person meetings with CMS Executive Staff and department leaders related to their areas of interest. The interns' toured Ardrey Kell Relief High School, Grove Park Elementary and West Charlotte High School with the CMS project team members to understand how design and building impacts student experiences and outcomes. Special thank you to ADW Architects, Little Diversified Architects, LS3P Architects, Optima Engineering, Benesch, Edifice, Inc. and Messer Construction for facilitating office tours and experiential learning opportunities. The student interns also participated in relevant on-line coursework through LinkedIn Learning.

Over the next month, team members will continue to work with contractors interested in bidding on the upcoming school projects utilizing various virtual tools to communicate. Contractors are encouraged to review bid advertisements in Charlotte Observer and register as a vendor on the North Carolina Interactive Purchasing System for notification of the various opportunities.

BOND PROGRESS SUMMARY As of July 2023

Funding Source and Value		Amount Committed/Pending	Amount Paid to Date	Amount Expended This Period
'13 Bond	\$316,067,527	\$314,489,827	\$314,356,487	\$0
'17 Bond	\$1,005,473,959	\$970,761,635	\$787,894,229	\$16,905,063
Grand Total	\$1,321,541,486	\$1,285,251,462	\$1,102,250,716	\$16,905,063

UPCOMING MAJOR CONSTRUCTION PROCUREMENT DATES *Three-Month Look Ahead*

School Name

Bid Dates*

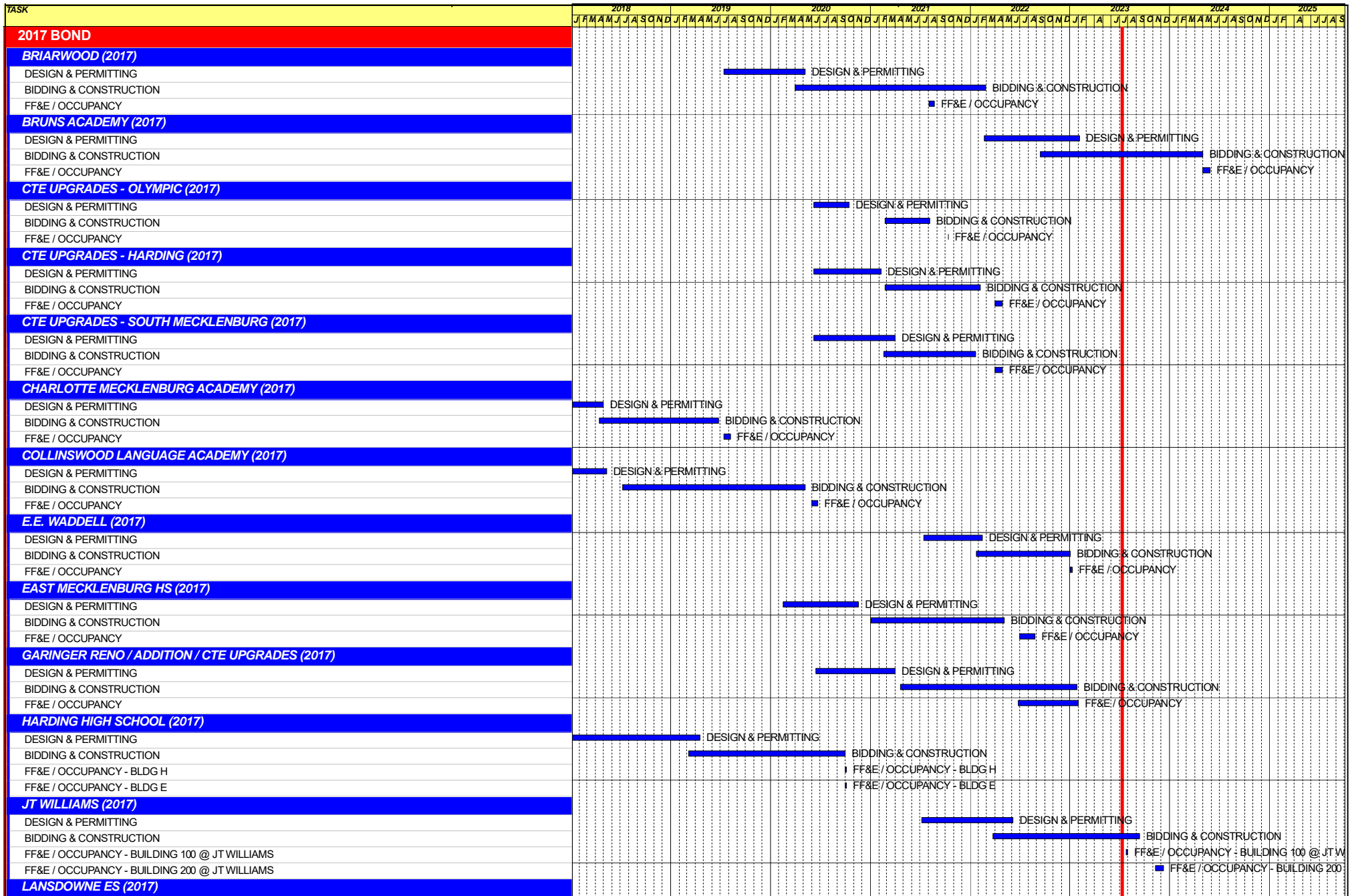
South Mecklenburg Phase Two
Managed by CM (Balfour Beatty)

August 2023

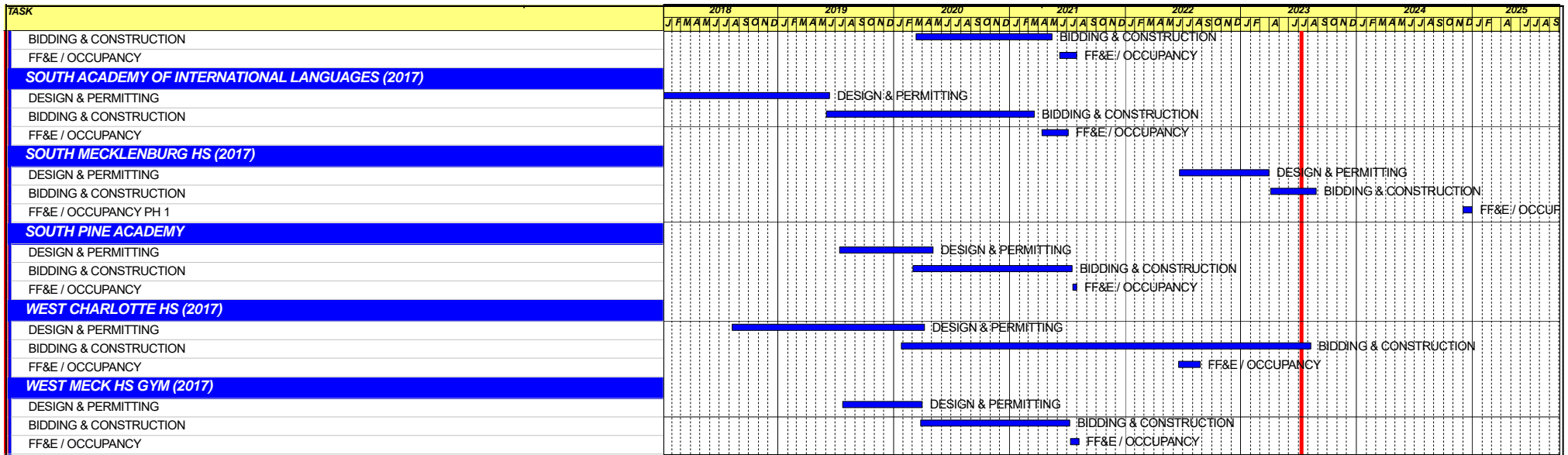
Windsor Elementary Old Classroom Demo

September 2023

** NOTE: Work In Progress...Dates Subject to Change.*



TASK	2018	2019	2020	2021	2022	2023	2024	2025
	JFMAMJJASND	JFMAMJJASND	JFMAMJJASND	JFMAMJJASND	JFMAMJJASND	JFMAMJJASND	JFMAMJJASND	JFMAMJJASND
DESIGN & PERMITTING				DESIGN & PERMITTING				
BIDDING & CONSTRUCTION							BIDDING & CONSTRUCTION	
FF&E / OCCUPANCY						FF&E / OCCUPANCY		
LINCOLN HEIGHTS (2017)								
DESIGN & PERMITTING						DESIGN & PERMITTING		
BIDDING & CONSTRUCTION							BIDDING & CONSTRUCTION	
FF&E / OCCUPANCY							FF&E / OCCUPANCY	
MONTCLAIRE ES (2017)								
DESIGN & PERMITTING	DESIGN & PERMITTING							
BIDDING & CONSTRUCTION		BIDDING & CONSTRUCTION						
FF&E / OCCUPANCY			FF&E / OCCUPANCY					
MOUNTAIN ISLAND LAKE ACADEMY (2017)								
DESIGN & PERMITTING					DESIGN & PERMITTING			
BIDDING & CONSTRUCTION						BIDDING & CONSTRUCTION		
FF&E / OCCUPANCY						FF&E / OCCUPANCY		
MINT HILL ES (2017)								
DESIGN & PERMITTING				DESIGN & PERMITTING				
BIDDING & CONSTRUCTION					BIDDING & CONSTRUCTION			
FF&E / OCCUPANCY					FF&E / OCCUPANCY			
NEW ES (ELON, HAWK, POLO) (2017)								
DESIGN & PERMITTING						DESIGN & PERMITTING		
BIDDING & CONSTRUCTION							BIDDING & CONSTRUCTION	
FF&E / OCCUPANCY							FF&E / OCCUPANCY	
GROVE PARK ES (2017)								
DESIGN & PERMITTING						DESIGN & PERMITTING		
BIDDING & CONSTRUCTION							BIDDING & CONSTRUCTION	
FF&E / OCCUPANCY							FF&E / OCCUPANCY	
NEW ES (WINDSOR, WINTERFIELD, IDLEWILD) (2017)								
DESIGN & PERMITTING						DESIGN & PERMITTING		
BIDDING & CONSTRUCTION							BIDDING & CONSTRUCTION	
FF&E / OCCUPANCY							FF&E / OCCUPANCY	
NEW HS (OLYMPIC) (2017)								
DESIGN & PERMITTING		DESIGN & PERMITTING						
BIDDING & CONSTRUCTION			BIDDING & CONSTRUCTION					
FF&E / OCCUPANCY			FF&E / OCCUPANCY					
NEW HS SOUTH (ARDREY KELL, MYERS PARK, OLYMPIC) (2017)								
DESIGN & PERMITTING				DESIGN & PERMITTING				
BIDDING & CONSTRUCTION					BIDDING & CONSTRUCTION			
FF&E / OCCUPANCY					FF&E / OCCUPANCY			
NORTH ACADEMY OF WORLD LANGUAGES								
DESIGN & PERMITTING	DESIGN & PERMITTING							
BIDDING & CONSTRUCTION		BIDDING & CONSTRUCTION						
FF&E / OCCUPANCY		FF&E / OCCUPANCY						
NORTHWEST SCHOOL OF THE ARTS (2017)								
DESIGN & PERMITTING						DESIGN & PERMITTING		
BIDDING & CONSTRUCTION							BIDDING & CONSTRUCTION	
FF&E / OCCUPANCY							FF&E / OCCUPANCY	
SHAMROCK GARDENS (2017)								
DESIGN & PERMITTING			DESIGN & PERMITTING					
BIDDING & CONSTRUCTION				BIDDING & CONSTRUCTION				
FF&E / OCCUPANCY				FF&E / OCCUPANCY				
SHARON ES (2017)								
DESIGN & PERMITTING			DESIGN & PERMITTING					



Capital Improvements Program
Projects in Design or Under Construction

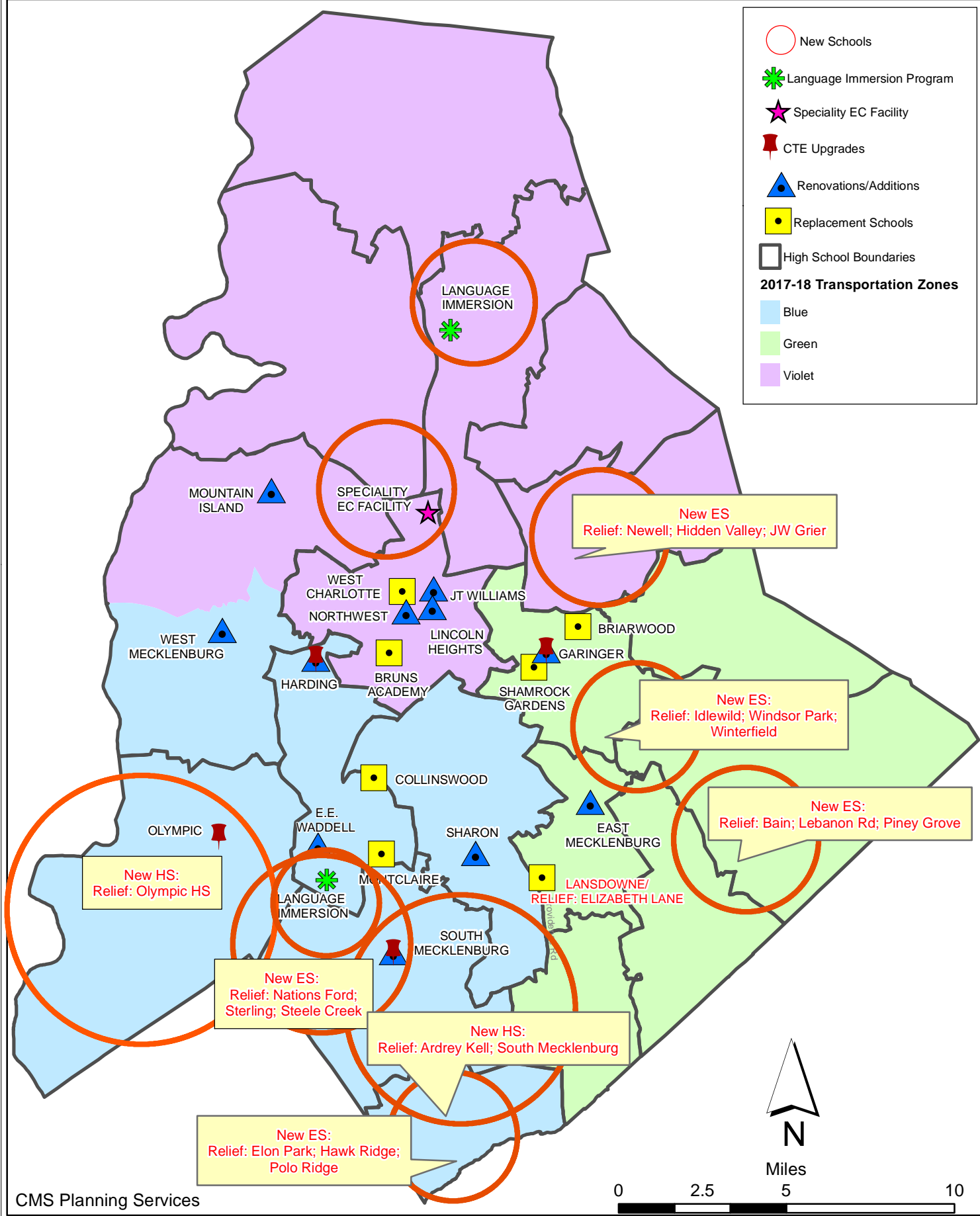
School	Architect	General Contractor/CM
Projects In Design		
Northwest School of the Arts Addition (17)	LS3P	Balfour Beatty
South Mecklenburg High School Addition (17)	Morris Berg	Balfour Beatty
Projects in Bid/Award/Construction Phase		
Esperanza Global Academy (17)	Neighboring Concepts	Rodgers-Holt Brothers
Grove Park ES (17)	ADW	Edifice, Inc.
J.T. Williams (17)	FWA	New Atlantic
Lansdowne Elementary School Replacement (17)	Perkins Eastman	Edifice, Inc.
Lincoln Heights Repurpose (17)	Neighboring Concepts	Randolph & Sons
Mountain Island School (17)	ADW	Whiting-Turner
New ES (Elon,Hawk Ridge, Polo Ridge) (17)	Little Diversified	Balfour Beatty
New Bruns Avenue ES (17)	ADW	Edifice, Inc.
New HS (South, Ardrey) (17)	Ratio	Messer
West Charlotte High School (17)	LS3P	Rodgers-Holt Brothers

Capital Improvements Program
Projects Substantially Completed/Closed *

School	Turnover Year	Architect	General Contractor
E.E. Waddell (17)	Jan-23	Moseley	Randolph & Sons Builders
Garinger Addition/Renovation & CTE (17)	Jan-23	LS3P	Balfour Beatty
Palisades High School (Olympic Relief) (17)	Aug-22	Little Diversified	Edifice, Inc.
Shamrock Gardens Elementary School Replacement (17)	Aug-22	Little Diversified	Rodgers/Holt Brothers
Mint Hill ES (17) <i>(fka Bain, Lebanon Rd, Piney Grove)</i>	Aug-22	FWA	Metcon
East Mecklenburg High School (17)	May-22	Morris Berg	Turner Construction
CTE (Harding, Olympic, South) (17)	Jan-22	MPS	Branch Brownstone
Briarwood Elementary School Replacement (17)	Aug-21	ADW	New Atlantic Contracting
Montclair Elementary School (17)	Aug-21	WHN	Messer Construction
North Academy of World Languages (17)	Aug-21	ADW	New Atlantic Contracting
Sharon Elementary School (17)	Aug-21	Clark Nexsen	Samet
South Academy of International Languages (17)	Aug-21	FWA	Messer Construction
South Pine Academy (17)	Aug-21	FWA	Metcon
West Mecklenburg Gym (17)	Aug-21	Moseley	Barnhill/D.A. Everett
Collinswood Language Academy (17)	Aug-20	Perkins Eastman	Turner Construction
Harding High School Renovation (17)	Aug-20	SFLA	Barnhill Contracting
Rea Farms STEAM Academy (13)	Aug-20	Little Diversified	Balfour Beatty
Ashley Park K-8 Conversion (13)	Aug-19	ADW	Turner Construction
Druid Hills K-8 Conversion (13)	Aug-19	ADW	Edifice, Inc.
Selwyn Elementary (13)	Aug-19	Clark Nexsen	Balfour Beatty
Charlotte Mecklenburg Academy (17)	Aug-19	KSQ	Edifice, Inc.
Davidson K-8 (13)	Aug-19	Little Diversified	Gilbane
CTE - North Mecklenburg High (13)	Aug-19	LS3P	Shiel Sexton
CTE - Garinger (13)	Mar-19	LS3P	Hostetter & Son
CTE - Independence (13)	Mar-19	LS3P	D.E. Brown
CTE - West Mecklenburg (13)	Mar-19	LS3P	Hostetter & Son
Charlotte East Language Academy (13)	Aug-18	Morris Berg	Edifice, Inc
Myers Park High School Phase 3 (13)	Aug-18	Boomerang Design	BE&K
Northridge Middle (13)	Aug-18	Morris Berg	Barnhill Contracting
Myers Park High Bldg 2 (13)	Feb-18	Boomerang Design	BE&K
East Mecklenburg High Addition (13)	Jan-18	Bergman (fna Gantt Huberman)	Edifice, Inc.
J.M. Alexander Middle (13)	Aug-17	FWA Group	Balfour Beatty
Northwest School of the Arts Renovation (13)	Aug-17	Moseley	Turner Construction
Renaissance West STEAM Academy (13)	Aug-17	Little Diversified	Rodgers Construction
South Mecklenburg High Addition (13)	Jul-17	SFLA	Barnhill Contracting
Myers Park High Bldg 1 (13)	Sep-16	Boomerang	KBR
Statesville Road Elementary (13)	Aug-16	ADW	JE Dunn
Nations Ford Elementary (13)	Aug-16	Wash Hatem Nelson	Messer Construction
Olympic High Addition (13)	Aug-16	McMillan, Pazdan, Smith	Turner Construction
Lawrence Orr Elementary (07)	Aug-15	Cort Architectural Group	DH Griffin/Metcon
Parkside Elementary (07)	Aug-15	Wash Hatem Nelson	Clancy & Theys
Hawthorne High Renovations (07)	Aug-15	Morris-Berg	Balfour Beatty
Newell Elementary (07)	Aug-15	Perkins Eastman	New Atlantic Contracting
Ranson Middle (07)	Aug-15	Morris-Berg	Edifice, Inc.
Vance High	Jan-15	LS3P	Matthews Construction Co., Inc.
Garinger High - Renovations/Addition	Aug-14	Adams Group Architects	Turner Construction
Olympic High - Stadium	Aug-14	Site Solutions	Turner Construction
West Mecklenburg High - Stadium	Aug-14	Site Solutions	Turner Construction
Collinswood - Indoor Air Quality	Aug-14	PEA	The Bowers Group
Lansdowne - Indoor Air Quality	Aug-14	AeroRaq	Tyler 2
McKee Road - Indoor Air Quality	Aug-14	McCracken & Lopez	Godfrey Construction
Garinger High - Track & Field	Jul-14	Site Solutions	Turner Construction
Independence High - Gym	Jun-14	Shook Kelly	Shelco, Inc. (CM)
Palisades Park Elementary	May-14	Wash Hatem Nelson	Clancy & Theys
East Mecklenburg High Auditorium	Jan-14	Gantt Huberman Associates	Godfrey Construction Co., Inc.

Projects closed prior to 2014 are not shown

CMS Capital Improvement Plan 2017 Bond Projects



PROJECT STATUS REPORT



Monthly Project Status 2017 Bond Summary July 2023

Project	Current Project Estimate	Project Scope	** Occupy On	Design Phase	Construction Progress	Project Status
Briarwood Elementary School (17)	\$ 31,243,066	45-classroom replacement facility; replaces school built in 1956.	August 2021	Complete	100 %	Project is complete.
Bruns Avenue Elementary School (17)	\$ 48,890,679	New 45-classroom elementary school (K-5); replaces old school built in 1969.	August 2024	Complete	19 %	The Bruns Elementary School Replacement continued to focus on the structure of the building. The structural steel continued with the installation of the classroom structural steel along with the slab on deck being poured on floors two and three. The plumbing and electrical work continued on the underground rough-ins in the administration and kitchen areas. The metal stud contractor mobilized and began installations of the exterior studs. The mason continued with below grade masonry and interior walls. The new building is scheduled for occupancy August of 2024. The demolition of the old building and associated site work will commence once the new building is occupied.
Career and Technology Education (17)	\$ 9,659,765	Phase I CTE upgrades at Olympic, Harding, Garinger and South Mecklenburg.	January 2022	Complete	100 %	Project is complete.
Charlotte-Mecklenburg Academy (17)	\$ 17,699,220	New EC school located on the old Statesville Elementary School site.	August 2019	Complete	100 %	Project is complete.
Collinswood Language Academy (17)	\$ 41,412,015	New 63-classroom K-8 facility on the site of the Smith Family Center.	August 2020	Complete	100 %	Project is complete.
E.E. Waddell (17)	\$ 5,137,367	Repurpose current E.E. Waddell to reopen as a magnet high school.	August 2023	Complete	100 %	Project is complete.
East Mecklenburg High School (17)	\$ 10,231,911	This project will provide for the design, and construction of a new 30 classroom building.	August 2022	Complete	99 %	Project is complete.

Monthly Project Status

2017 Bond Summary

July 2023

Project	Current Project Estimate	Project Scope	** Occupy On	Design Phase	Construction Progress	Project Status
Esperanza Global Academy (17)	\$ 45,855,770	New 45-classroom elementary school to relieve Windsor, Winterfield, and Idlewild ES.	August 2023	Complete	85 %	The Esperanza Global Academy (fka New ES Windsor, Winterfield, Idlewild Relief) construction manager has completed paving of the bus and staff lots. Site landscaping including trees and shrubs is progressing. Bermuda sod is down at the K-1 courtyard. Building finishes are being finalized. Classroom floors are waxed and FF&E installation will begin in a few weeks. The punch list has been generated. Staff occupancy will occur in mid-August.
Garinger High School (17)	\$ 5,236,979	Project includes the design and construction for renovations of 300 building and a new 16 classroom building.	January 2023	Complete	98 %	The construction manager for the Garinger Addition and Renovation project has completed commissioning activities for the 300 Building renovations. The replacement glass and glazing work is 98% complete.
Grove Park Elementary School (17)	\$ 44,079,387	New 45-classroom elementary school; relieves overcrowding at Hidden Valley, J.W. Grier, Newell.	August 2023	Complete	87 %	The Grove Park Elementary School fka New ES Hidden Valley, JW Grier, Newell) construction manager has completed paving of the bus lot and shared staff lot with Northridge Middle. Sod is being installed in areas around the building and playground installations are being completed. Building finishes are being finalized and the punch list has been generated. The classroom floors have been waxed and FF&E installation will begin in a few weeks. Staff occupancy will occur in mid-August.
Harding High School (17)	\$ 13,747,878	Renovation of the kitchen, cafeteria, existing gym (aux) and the addition of a new gym.	August 2020	Complete	100 %	Project is complete.
JT Williams (17)	\$ 17,032,600	Project includes building renovations to J.T. Williams Montessori magnet.	August 2023	Complete	80 %	The construction manager for JT Williams Secondary Montessori has obtained occupancy approval of the 100 Building. FF&E installation is complete. Two RTU's are temporary units until the permanent mechanical units arrive. The 200 Building renovations continue with final finishes and the installation of the new RTU is underway. The contractors continue to work diligently towards the August occupancy schedule allowing students and staff to start school in the 200 Building.

Monthly Project Status

2017 Bond Summary

July 2023

Project	Current Project Estimate	Project Scope	** Occupancy On	Design Phase	Construction Progress	Project Status
Lansdowne Elementary School (17)	\$ 33,804,188	New 45-classroom school; replaces old school built in 1959 and relieve crowding at Elizabeth Lane ES.	August 2022	Complete	97 %	The Lansdowne Elementary School playground has been seeded and straw installed. The site contractor continues to work on stabilizing the site. Erosion control perimeter silt fence remains as grassing progresses. The new playgrounds have been installed and opened for students. The site work will be substantially completed in April.
Lincoln Heights Elementary School (17)	\$ 4,588,675	Repurpose and reopen as magnet school.	August 2023	Complete	81 %	The Lincoln Heights Montessori School repurpose project renovations are near completion. The building occupancy approvals have been granted and staff has occupied the facility. FF&E has been moved from Trillium Springs. The contractor is working off a minor punch list. The project will now move into the closeout phase.
Mint Hill Elementary School (17)	\$ 29,671,526	New 45-classroom elementary school; relieves crowding at Bain, Lebanon Road, Piney Grove.	August 2022	Complete	100 %	The Mint Hill Elementary School project has moved into the closeout phase. The new signal at the entrance to the schools is currently scheduled to occur spring/summer 2023.
Montclair Elementary School (17)	\$ 28,200,634	New 45-classroom replacement facility replacing school built in 1958.	August 2020	Complete	100 %	Project is complete.
Mountain Island Lake Academy (17)	\$ 13,239,686	K-8 Phase 2 - New gymnasium and specialty classrooms.	August 2023	Complete	98 %	The Mountain Island Lake Academy Gym/Classroom Addition construction manager is working on their closeout activities along with punch lists.
New Elementary School (Elon, Hawk Ridge, Polo Relief) (17)	\$ 60,641,760	New 45-classroom elementary school to relieve Elon, Hawk Ridge, Polo.	August 2024	Complete	48 %	The New Elementary School (Elon, Hawk Ridge, Polo Relief) construction manager continued to manage multiple trades on the project. The mason continued brick installations on the building and recreation center. Exterior studs were installed along with the sheathing. The storefront window frames and glass continues to be installed throughout the building. The MEP trades continue their above ceiling and in wall rough-in throughout the building. Roadwork on Ardrey Kell and the intersection with Beau Riley is scheduled for to begin next month.

Monthly Project Status

2017 Bond Summary

July 2023

Project	Current Project Estimate	Project Scope	** Occupy On	Design Phase	Construction Progress	Project Status
New High School (South, Ardrey) (17)	\$ 146,286,358	New 100 classroom high school to relieve South Mecklenburg, Ardrey Kell and Myers Park HS.	August 2024	Complete	47 %	The New High School (South, Ardrey Relief) construction manager continued with masonry installations, erection of structural steel and exterior metal studs. The roofer continued installations on the buildings with load bearing masonry. The MEP trades began above ceiling rough-in on the first and second floor of the classroom wing along with interior metal studs. The site work contractor continued with the final installations of the underground detention, removal of excess soil and installation of the water line. The outbuilding CMU masonry installations continued along with electrical and plumbing rough-ins.
North Academy of World Languages (17)	\$ 41,739,951	New 66 classroom K-8 Language Immersion facility located on the old J.M. Alexander Middle School site.	August 2021	Complete	100 %	Project is complete.
Northwest School of the Arts (17)	\$ 12,167,000	Replace classroom buildings B&D and build classroom addition that supports program. 1st phase includes parking and U/G stormwater.	January 2025	Construction Documents	0 %	The Northwest School of the Arts project has achieved building permit approval for Phase One. The Phase One design scope includes the underground storm water detention system and new car parking lot in preparation for Phase Two. The car parking modifications are scheduled to begin late summer of 2023. Phase Two design documents have been reviewed by CMS staff and comments have been submitted for incorporation. The design project has progressed into the construction document phase. Phase Two scope includes a new administration, visual/performing arts building and other campus renovations.
Palisades High School (17)	\$ 107,592,534	New 100 classroom high school; relieves crowding at Olympic High School.	August 2022	Complete	99 %	The Palisades High School (fka New High School Olympic Relief) has been occupied by staff and students. The construction manager is in the closeout phase and is working with trade contractors to complete punch list and open issues.
Shamrock Gardens Elementary School (17)	\$ 30,784,692	New 45-classroom replacement facility.	August 2022	Complete	100 %	Project is complete.
Sharon Elementary School (17)	\$ 9,125,862	Add 16 classroom building and increase capacity of cafeteria.	August 2021	Complete	100 %	Project is complete.

Monthly Project Status

2017 Bond Summary

July 2023

Project	Current Project Estimate	Project Scope	** Occupy On	Design Phase	Construction Progress	Project Status
South Academy of International Languages (17)	\$ 40,669,909	New 71 classroom K-8 Language Immersion facility located on the old Nations Ford Elementary School site.	August 2021	Complete	100 %	Project is complete.
South Mecklenburg High School (17)	\$ 15,622,927	Renovate/replace two classroom buildings built in 1958 to upgrade learning conditions.	January 2025	Construction Documents	0 %	The South Mecklenburg High School Addition Phase One project work requiring long lead equipment and associated labor was approved by the Board of Education and notice to proceed issued. The remaining scopes of work will be submitted to the Board for award in September. The project consists of a 3-story classroom addition providing 19 classrooms that support the CTE program, visual arts and the JROTC program. The coordination of utility relocations and relocation of the existing mobile classroom units has begun to allow construction of the new building.
South Pine Academy (17)	\$ 30,438,977	New 45-classroom elementary school to relieve Nations Ford, Sterling, and Steele Creek.	August 2021	Complete	100 %	Project is complete.
West Charlotte High School (17)	\$ 104,413,163	New 100 classroom school to replace current facility built in 1954.	August 2022	Complete	96 %	The West Charlotte High School construction manager continues to work on the Phase Two (demolition/site work). The north parking lot and front staff lot are complete. The staff has transitioned from the temporary office/entrance to the new main entrance. The athletic fields have been sodded and fencing is being finalized. The site contractor will be paving the old entrance locations along Senior Drive and Southwest Boulevard. The last phase of paving the bus lot will allow the school to use the completed lot as planned.
West Mecklenburg High School (17)	\$ 6,259,479	Provide new gymnasium, the existing gymnasium will become the auxilliary.	August 2021	Complete	100 %	Project is complete.

MWSBE PARTICIPATION REPORT

Contract Status Report - MWSBE Participation Commitments

Report Date 8/15/2023

Charlotte-Mecklenburg Schools

8/15/2023 11:11:44 AM

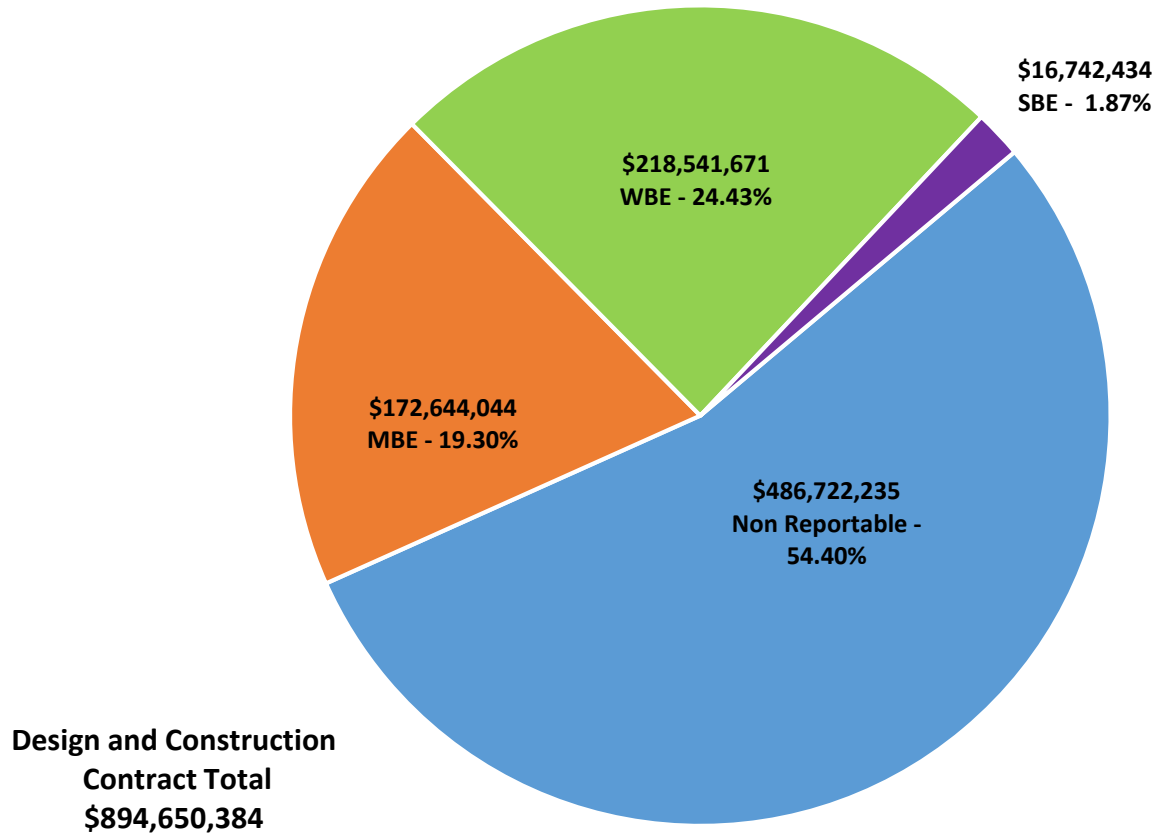
2017 Bond Projects

July 2023 Monthly Bond Report

Facility	Contract Amount	African American MBE\$	%	Other MBE \$	%	Total MBE \$	%	Other WBE \$	%	Other SBE \$	%	Total	%
<u>Briarwood Elementary School (17)</u>	\$28,413,151	\$4,038,457	14.21%	\$2,135,619	7.52%	\$6,174,076	21.73%	\$2,187,249	7.70%	\$187,102	0.66%	\$8,548,427	30.09%
<u>Bruns Avenue Elementary School (17)</u>	\$44,910,692	\$3,060,752	6.82%	\$3,862,621	8.60%	\$6,923,373	15.42%	\$8,462,977	18.84%	\$2,436,151	5.42%	\$17,822,501	39.68%
<u>Career and Technology Education (17)</u>	\$5,594,345	\$522,870	9.35%	\$315,278	5.64%	\$838,148	14.98%	\$203,576	3.64%	\$65,475	1.17%	\$1,107,199	19.79%
<u>Charlotte-Mecklenburg Academy (17)</u>	\$17,035,852	\$198,536	1.17%	\$1,031,692	6.06%	\$1,230,228	7.22%	\$928,655	5.45%	\$13,200	0.08%	\$2,172,083	12.75%
<u>Collinswood Language Academy (17)</u>	\$38,527,704	\$649,307	1.69%	\$1,613,104	4.19%	\$2,262,411	5.87%	\$11,363,565	29.49%	\$8,328	0.02%	\$13,634,304	35.39%
<u>E.E. Waddell (17)</u>	\$2,140,532	\$0	0.00%	\$0	0.00%	\$0	0.00%	\$58,690	2.74%	\$0	0.00%	\$58,690	2.74%
<u>East Mecklenburg High School (17)</u>	\$12,642,198	\$603,811	4.78%	\$532,460	4.21%	\$1,136,271	8.99%	\$490,364	3.88%	\$681,075	5.39%	\$2,307,710	18.25%
<u>Esperanza Global Academy (17)</u>	\$41,224,686	\$8,292,015	20.11%	\$4,662,363	11.31%	\$12,954,378	31.42%	\$25,466,394	61.77%	\$170,453	0.41%	\$38,591,225	93.61%
<u>Garinger High School (17)</u>	\$4,316,206	\$383,830	8.89%	\$1,453,894	33.68%	\$1,837,724	42.58%	\$857,883	19.88%	\$251,932	5.84%	\$2,947,539	68.29%
<u>Grove Park Elementary School (17)</u>	\$38,660,600	\$5,493,635	14.21%	\$4,211,754	10.89%	\$9,705,389	25.10%	\$2,237,544	5.79%	\$25,600	0.07%	\$11,968,533	30.96%
<u>Harding High School (17)</u>	\$13,015,986	\$1,504,505	11.56%	\$310,357	2.38%	\$1,814,862	13.94%	\$4,050,417	31.12%	\$36,861	0.28%	\$5,902,139	45.35%
<u>JT Williams (17)</u>	\$15,509,768	\$973,801	6.28%	\$343,427	2.21%	\$1,317,228	8.49%	\$3,638,716	23.46%	\$51,800	0.33%	\$5,007,745	32.29%
<u>Lansdowne Elementary School (17)</u>	\$30,775,402	\$2,809,680	9.13%	\$877,274	2.85%	\$3,686,954	11.98%	\$2,267,461	7.37%	\$223,625	0.73%	\$6,178,040	20.07%
<u>Lincoln Heights Elementary School (17)</u>	\$2,698,300	\$318,959	11.82%	\$18,800	0.70%	\$337,759	12.52%	\$56,330	2.09%	\$74,503	2.76%	\$468,592	17.37%
<u>Mint Hill Elementary School (17)</u>	\$25,910,259	\$5,223,675	20.16%	\$17,791,909	68.67%	\$23,015,584	88.83%	\$1,192,408	4.60%	\$308,370	1.19%	\$24,516,362	94.62%
<u>Montclair Elementary School (17)</u>	\$26,093,784	\$3,593,852	13.77%	\$2,260,381	8.66%	\$5,854,233	22.44%	\$5,757,423	22.06%	\$493,707	1.89%	\$12,105,363	46.39%
<u>Mountain Island Lake Academy (17)</u>	\$12,514,576	\$175,291	1.40%	\$833,532	6.66%	\$1,008,823	8.06%	\$869,343	6.95%	\$15,300	0.12%	\$1,893,466	15.13%
<u>New Elementary School (Elon, Hawk R</u>	\$45,539,599	\$5,073,500	11.14%	\$1,356,642	2.98%	\$6,430,142	14.12%	\$10,805,612	23.73%	\$2,002,841	4.40%	\$19,238,595	42.25%
<u>New High School (South, Ardrey) (17)</u>	\$132,951,739	\$3,217,133	2.42%	\$4,883,320	3.67%	\$8,100,453	6.09%	\$12,420,994	9.34%	\$4,193,309	3.15%	\$24,714,757	18.59%
<u>North Academy of World Languages (</u>	\$38,090,783	\$1,770,068	4.65%	\$1,575,864	4.14%	\$3,345,931	8.78%	\$3,468,574	9.11%	\$436,793	1.15%	\$7,251,298	19.04%
<u>Northwest School of the Arts (17)</u>	\$9,038,231	\$0	0.00%	\$37,000	0.41%	\$37,000	0.41%	\$29,335	0.32%	\$0	0.00%	\$66,335	0.73%
<u>Palisades High School (17)</u>	\$98,070,130	\$13,504,638	13.77%	\$7,587,760	7.74%	\$21,092,398	21.51%	\$13,853,217	14.13%	\$2,996,568	3.06%	\$37,942,182	38.69%
<u>Shamrock Gardens Elementary School</u>	\$27,189,620	\$2,478,054	9.11%	\$1,636,383	6.02%	\$4,114,438	15.13%	\$21,087,460	77.56%	\$259,554	0.95%	\$25,461,452	93.64%
<u>Sharon Elementary School (17)</u>	\$8,534,491	\$326,844	3.83%	\$283,497	3.32%	\$610,341	7.15%	\$926,873	10.86%	\$217,984	2.55%	\$1,755,197	20.57%

Facility	Contract Amount	African American MBE\$	%	Other MBE \$	%	Total MBE \$	%	Other WBE \$	%	Other SBE \$	%	Total	%
<u>South Academy of International Langu</u>	\$37,073,557	\$6,023,142	16.25%	\$2,431,071	6.56%	\$8,454,213	22.80%	\$10,945,346	29.52%	\$313,999	0.85%	\$19,713,558	53.17%
<u>South Mecklenburg High School (17)</u>	\$6,997,682	\$0	0.00%	\$0	0.00%	\$0	0.00%	\$0	0.00%	\$0	0.00%	\$0	0.00%
<u>South Pine Academy (17)</u>	\$26,161,268	\$916,165	3.50%	\$19,014,076	72.68%	\$19,930,241	76.18%	\$4,342,256	16.60%	\$237,754	0.91%	\$24,510,251	93.69%
<u>West Charlotte High School (17)</u>	\$95,209,851	\$14,421,281	15.15%	\$5,216,954	5.48%	\$19,638,234	20.63%	\$68,509,259	71.96%	\$756,375	0.79%	\$88,903,868	93.38%
<u>West Mecklenburg High School (17)</u>	\$9,809,391	\$283,809	2.89%	\$509,403	5.19%	\$793,212	8.09%	\$2,063,752	21.04%	\$283,775	2.89%	\$3,140,740	32.02%
Grandtotal	\$894,650,384	\$85,857,610	9.60%	\$86,786,434	9.70%	\$172,644,044	19.30%	\$218,541,671	24.43%	\$16,742,434	1.87%	\$407,928,149	45.60%

MWSBE Participation 2017 Bond Projects



MONTHLY PROJECT PHOTOS



New ES Elon Park, Hawk Ridge, Polo Ridge



New ES Elon Park, Hawk Ridge, Polo Ridge

PROJECT PROGRESS PHOTOS



New ES Elon Park, Hawk Ridge, Polo Ridge

PROJECT PROGRESS PHOTOS



New HS Ardrey Kell, South Mecklenburg

PROJECT PROGRESS PHOTOS



New HS Ardrey Kell, South Mecklenburg

PROJECT PROGRESS PHOTOS



New HS Ardrey Kell, South Mecklenburg

PROJECT PROGRESS PHOTOS



New HS Ardrey Kell, South Mecklenburg

PROJECT PROGRESS PHOTOS



Esperanza Global Academy

PROJECT PROGRESS PHOTOS



Esperanza Global Academy



Esperanza Global Academy

PROJECT PROGRESS PHOTOS



Esperanza Global Academy

PROJECT PROGRESS PHOTOS



Grove Park Elementary School

PROJECT PROGRESS PHOTOS



Grove Park Elementary School

PROJECT PROGRESS PHOTOS



Mountain Island Lake Academy



Mountain Island Lake Academy

PROJECT PROGRESS PHOTOS



Mountain Island Lake Academy

PROJECT PROGRESS PHOTOS



Bruns Elementary School Replacement

PROJECT PROGRESS PHOTOS



Bruns Elementary School Replacement



Bruns Elementary School Replacement

PROJECT PROGRESS PHOTOS



JT Williams

PROJECT PROGRESS PHOTOS



Lincoln Heights

PROJECT PROGRESS PHOTOS



West Charlotte High School Phase 2



West Charlotte High School Phase 2

PROJECT CONTROLS

**CHARLOTTE-MECKLENBURG BOARD OF EDUCATION
2013 BOND SERIES-CAPITAL IMPROVEMENT PROGRAMS
BUDGET STATUS REPORT**

	Original Project Budget	Current Project Budget	Committed Amount	Approved Change Orders	Total Committed	Pending Commitments	To Be Committed	Prev Paid To Date	Paid To Date	Balance To Complete	Monthly Expenditure
	(A)	(B)	(C)	(D)	(E)=C+D	(F)	(G)=(B-E-F)	(H)	(I)	(J)=(B-I)	(K)=(I-H)
<u>A. REPLACEMENT & RENOVATIONS</u>											
1 Career & Technology Education Institutes Phase 1:	\$8,640,000	\$18,697,857	\$6,811,184	\$11,886,062	\$18,697,246	\$0	\$611	\$18,563,909	\$18,563,909	\$133,948	\$0
2 Davidson K-8 Conversion	\$9,500,000	\$13,461,149	\$2,131,151	\$11,329,998	\$13,461,149	\$0	\$0	\$13,461,149	\$13,461,149	\$0	\$0
3 J.M. Alexander Middle Replacement	\$30,672,000	\$29,845,539	\$4,502,518	\$25,343,021	\$29,845,539	\$0	\$0	\$29,845,539	\$29,845,539	\$0	\$0
4 Nations Ford Elementary Replacement	\$19,440,000	\$19,231,604	\$3,958,871	\$15,272,733	\$19,231,604	\$0	\$0	\$19,231,604	\$19,231,604	\$0	\$0
5 Northwest School of the Arts	\$12,420,000	\$12,868,718	\$2,047,917	\$10,820,801	\$12,868,718	\$0	\$0	\$12,868,719	\$12,868,719	\$0	\$0
6 Oakhurst STEAM Magnet Elementary/Starmount	\$5,940,000	\$5,407,812	\$3,471,397	\$1,936,415	\$5,407,812	\$0	\$0	\$5,407,812	\$5,407,812	\$0	\$0
7 Pre-K-8 Conversions Phase II: Ashley Park/ Bruns	\$24,732,000	\$19,700,807	\$4,167,671	\$15,533,138	\$19,700,809	\$0	\$0	\$19,700,807	\$19,700,807	\$0	\$0
8 Selwyn Elementary	\$2,592,000	\$4,624,831	\$744,799	\$3,880,032	\$4,624,831	\$0	\$0	\$4,624,831	\$4,624,831	\$0	\$0
9 Statesville Road Elementary	\$20,340,000	\$20,648,509	\$5,081,473	\$15,567,037	\$20,648,509	\$0	\$0	\$20,648,509	\$20,648,509	\$0	\$0
10 West Mecklenburg HS	\$0	\$3,993,543	\$3,993,543	\$0	\$3,993,543	\$0	\$0	\$3,993,543	\$3,993,543	\$0	\$0
Total Replacement & Renovations	\$134,276,000	\$148,480,367	\$36,910,523	\$111,569,237	\$148,479,760	\$0	\$612	\$148,346,421	\$148,346,421	\$133,946	\$0
<u>B. RESPONSE TO ENROLLMENT GROWTH</u>											
1 East Mecklenburg High Addition	\$12,744,000	\$12,083,804	\$4,465,200	\$7,618,603	\$12,083,803	\$0	\$0	\$12,083,803	\$12,083,803	\$0	\$0
2 Myers Park High Addition	\$22,248,000	\$11,040,942	\$1,207,493	\$9,833,448	\$11,040,942	\$0	\$0	\$11,040,941	\$11,040,941	\$0	\$0
3 Northridge Middle Addition	\$6,448,000	\$6,366,170	\$2,114,306	\$4,251,865	\$6,366,171	\$0	\$0	\$6,366,171	\$6,366,171	\$0	\$0
4 Olympic High Addition/Renovation	\$8,964,000	\$8,947,310	\$2,002,694	\$6,944,615	\$8,947,310	\$0	\$0	\$8,947,310	\$8,947,310	\$0	\$0
5 South Mecklenburg High Addition	\$18,360,000	\$16,307,355	\$2,922,282	\$13,385,073	\$16,307,355	\$0	\$0	\$16,307,355	\$16,307,355	\$0	\$0
6 Charlotte East Language Academy (FKA -New Lang	\$30,376,000	\$31,387,929	\$5,740,182	\$25,647,747	\$31,387,929	\$0	\$0	\$31,387,929	\$31,387,929	\$0	\$0
7 Rea Farms STEAM Academy	\$31,376,000	\$40,476,000	\$9,077,465	\$29,821,441	\$38,898,906	\$0	\$1,577,094	\$38,898,906	\$38,898,906	\$1,577,094	\$0
8 Renaissance West STEAM Academy (FKA New Pre-	\$30,376,000	\$31,698,952	\$5,667,388	\$26,031,564	\$31,698,952	\$0	\$0	\$31,698,952	\$31,698,952	\$0	\$0
9 New High School - South Meck/Ardrey Kell Relief *	\$0	\$9,278,699	\$9,278,699	\$0	\$9,278,699	\$0	\$0	\$9,278,699	\$9,278,699	\$0	\$0
Total Response to Enrollment Growth	\$160,892,000	\$167,587,161	\$42,475,710	\$123,534,357	\$166,010,067	\$0	\$1,577,094	\$166,010,066	\$166,010,066	\$1,577,095	\$0
<u>C. CONTINGENCY</u>											
	\$0	\$0	\$0	\$0	\$0	\$0	\$0	\$0	\$0	\$0	\$0
Total Contingency	\$0	\$0	\$0	\$0	\$0	\$0	\$0	\$0	\$0	\$0	\$0
TOTAL LOCAL BOND PROGRAM	\$295,168,000	\$316,067,527	\$79,386,233	\$235,103,594	\$314,489,827	\$0	\$1,577,706	\$314,356,487	\$314,356,487	\$1,711,040	\$0

Original project estimated costs approved by the Board Of Education on July 23, 2013 and approved by the voters of Mecklenburg County on November 5, 2013.

Note: Mecklenburg County's appropriated interest from COPS to increase funding for the 2013 Bond Program.

**CHARLOTTE-MECKLENBURG BOARD OF EDUCATION
2017 BOND SERIES-CAPITAL IMPROVEMENT PROGRAMS
BUDGET STATUS REPORT**

	Original Project Budget	Current Project Budget	Committed Amount	Approved Change Orders	Total Committed	Pending Commitments	To Be Committed	Prev Paid To Date	Paid To Date	Balance To Complete	Monthly Expenditure
	(A)	(B)	(C)	(D)	(E)=(C+D)	(F)	(G)=(B-E-F)	(H)	(I)	(J)=(B-I)	(K)=(I-H)
<u>A. REPLACEMENT & RENOVATIONS</u>											
1 Briarwood Elementary *	\$29,091,619	\$31,243,066	\$4,730,586	\$26,410,339	\$31,140,925	(\$1,500)	\$103,642	\$31,129,457	\$31,135,254	\$107,812	\$5,797
2 Bruns Academy Replacement	\$34,207,808	\$48,890,679	\$4,194,425	\$42,406,336	\$46,600,761	\$1,500	\$2,288,419	\$8,974,227	\$10,998,910	\$37,891,770	\$2,024,682
3 Career & Technology Education Upgrades	\$10,101,734	\$9,659,765	\$2,290,761	\$3,766,908	\$6,057,669	(\$176)	\$3,602,272	\$5,692,038	\$5,706,343	\$3,953,422	\$14,305
4 Collinswood K-8 *	\$44,172,540	\$41,412,015	\$4,927,263	\$36,484,752	\$41,412,015	\$0	\$0	\$41,401,384	\$41,401,384	\$10,631	\$0
5 East Mecklenburg HS	\$12,771,594	\$10,231,911	(\$1,659,510)	\$11,823,832	\$10,164,322	\$0	\$67,590	\$10,132,098	\$10,132,098	\$99,813	\$0
6 Garinger HS	\$13,936,979	\$5,236,979	\$1,620,771	\$3,534,819	\$5,155,589	\$0	\$81,390	\$4,249,372	\$4,252,868	\$984,111	\$3,496
7 Harding University High *	\$18,330,263	\$13,747,878	\$2,045,267	\$11,702,610	\$13,747,877	\$0	\$0	\$13,747,877	\$13,747,877	\$0	\$0
8 Charlotte-Mecklenburg Academy (FKA -EC Specialty	\$18,957,960	\$17,699,220	\$2,175,504	\$15,523,717	\$17,699,220	\$0	\$0	\$17,699,220	\$17,699,220	\$0	\$0
9 Lansdowne Elementary	\$29,391,270	\$33,804,188	\$3,974,078	\$29,465,004	\$33,439,081	\$41,075	\$324,032	\$31,837,349	\$32,130,314	\$1,673,874	\$292,965
10 Lincoln Heights Elementary	\$3,740,478	\$4,588,675	\$2,706,588	\$817,550	\$3,524,138	\$0	\$1,064,537	\$2,012,487	\$2,208,986	\$2,379,689	\$196,499
11 Montclair Elementary Replacement *	\$28,559,390	\$28,200,634	\$2,426,761	\$25,773,873	\$28,200,634	\$0	\$0	\$28,200,634	\$28,200,634	\$0	\$0
12 Mountain Island k-8	\$9,218,439	\$13,239,686	\$1,663,088	\$11,418,864	\$13,081,952	\$12,000	\$145,734	\$10,478,799	\$10,515,855	\$2,723,831	\$37,056
13 Northwest School of the Arts	\$17,632,202	\$12,167,000	\$5,231,298	\$4,692,496	\$9,923,794	\$0	\$2,243,205	\$1,627,997	\$1,772,334	\$10,394,666	\$144,337
14 Shamrock Gardens Elementary *	\$29,890,351	\$30,784,692	\$3,463,459	\$26,234,783	\$29,698,242	\$0	\$1,086,450	\$29,256,040	\$29,268,110	\$1,516,582	\$12,071
15 Sharon Elementary	\$7,706,528	\$9,125,862	\$1,430,125	\$7,675,679	\$9,105,804	\$0	\$20,058	\$9,067,791	\$9,079,791	\$46,071	\$12,000
16 South Mecklenburg HS	\$13,352,143	\$15,622,927	\$1,819,881	\$5,852,296	\$7,672,177	\$0	\$7,950,750	\$763,856	\$765,386	\$14,857,541	\$1,531
17 E.E. Waddell Magnet HS	\$4,571,709	\$5,137,367	\$2,913,584	\$290,338	\$3,203,921	\$0	\$1,933,446	\$2,056,719	\$2,212,272	\$2,925,095	\$155,554
18 West Charlotte HS Replacement	\$109,977,166	\$104,413,163	\$11,921,082	\$91,558,299	\$103,479,381	\$31,500	\$902,282	\$97,364,595	\$98,516,982	\$5,896,181	\$1,152,387
19 West Mecklenburg HS	\$11,065,440	\$6,259,479	(\$2,371,639)	\$8,631,118	\$6,259,479	\$0	\$0	\$6,260,654	\$6,260,654	\$0	\$0
20 John Taylor Williams	\$13,964,339	\$17,032,600	\$3,576,636	\$12,492,488	\$16,069,124	\$172,366	\$791,110	\$11,445,474	\$12,112,339	\$4,920,261	\$666,865
Total Replacement & Renovations	\$460,639,952	\$458,497,787	\$59,080,006	\$376,556,100	\$435,636,106	\$256,765	\$22,604,916	\$363,398,068	\$368,117,612	\$90,380,174	\$4,719,544
<u>B. RESPONSE TO ENROLLMENT GROWTH</u>											
1 South Academy of International Languages	\$45,359,367	\$40,669,909	\$5,953,333	\$34,716,308	\$40,669,641	\$0	\$268	\$40,586,977	\$40,586,977	\$82,932	\$0
2 North Academy of World Languages (FKA - New K-8	\$45,359,367	\$41,739,951	\$6,022,055	\$35,717,896	\$41,739,951	\$0	\$0	\$41,742,062	\$41,742,062	\$0	\$0
3 South Pine Academy (FKA - New ES Nations Ford, S	\$29,173,829	\$30,438,977	\$6,842,534	\$23,596,443	\$30,438,977	\$0	\$0	\$30,474,698	\$30,477,421	\$0	\$2,723
4 Mint Hill Elementary School	\$29,988,332	\$29,671,526	\$3,295,972	\$25,964,556	\$29,260,528	\$0	\$410,998	\$28,644,410	\$29,010,140	\$661,386	\$365,730
5 Esperanza Global Academy (FKA New ES - Windsor	\$30,422,230	\$45,855,770	\$13,290,366	\$31,504,771	\$44,795,136	\$41,473	\$1,019,161	\$32,520,661	\$35,274,085	\$10,581,686	\$2,753,424
6 New Elementary School - Elon/Hawk Ridge Relief *	\$30,426,712	\$60,641,761	\$16,485,199	\$43,464,051	\$59,949,250	\$18,400	\$674,111	\$34,856,471	\$37,104,794	\$23,536,966	\$2,248,323
7 Grove Park Elementary (FKA New ES - Hidden Valle	\$30,518,345	\$44,079,387	\$6,517,332	\$36,597,989	\$43,115,321	\$8,000	\$956,066	\$31,431,734	\$33,762,158	\$10,317,229	\$2,330,424
8 Palisades High School	\$109,908,793	\$107,592,534	\$10,901,447	\$96,401,797	\$107,303,244	\$20,042	\$269,248	\$105,347,893	\$105,414,230	\$2,178,304	\$66,337
9 New High School - South Meck/Ardrey Kell Relief *	\$110,287,621	\$146,286,358	\$11,180,830	\$125,664,701	\$136,845,531	\$663,270	\$8,777,556	\$61,986,191	\$66,404,750	\$79,881,608	\$4,418,559
Total Response to Enrollment Growth	\$461,444,596	\$546,976,173	\$80,489,069	\$453,628,511	\$534,117,579	\$751,186	\$12,107,408	\$407,591,098	\$419,776,617	\$127,199,556	\$12,185,518
<u>C. CONTINGENCY</u>											
	\$0	\$0	\$0	\$0	\$0	\$0	\$0	\$0	\$0	\$0	\$0
Total Contingency	\$0	\$0	\$0	\$0	\$0	\$0	\$0	\$0	\$0	\$0	\$0

**CHARLOTTE-MECKLENBURG BOARD OF EDUCATION
2017 BOND SERIES-CAPITAL IMPROVEMENT PROGRAMS
BUDGET STATUS REPORT**

	Original Project Budget	Current Project Budget	Committed Amount	Approved Change Orders	Total Committed	Pending Commitments	To Be Committed	Prev Paid To Date	Paid To Date	Balance To Complete	Monthly Expenditure
	(A)	(B)	(C)	(D)	(E)=C+D	(F)	(G)=(B-E-F)	(H)	(I)	(J)=(B-I)	(K)=(I-H)
TOTAL LOCAL BOND PROGRAM	\$922,084,548	\$1,005,473,960	\$139,569,074	\$830,184,611	\$969,753,685	\$1,007,950	\$34,712,324	\$770,989,167	\$787,894,229	\$217,579,730	\$16,905,063

Original project estimated costs approved by the Board Of Education on July 25, 2017 approved by the voters of Mecklenburg County on November 7, 2017.

*Project included in \$33.2M early funding approved by Board Of Education on August 9, 2016 and Mecklenburg Board of County Commissioners on September 6, 2016. On February 19, 2019 an additional \$8M was approved for New Elementary School - Elon/Hawk Ridge Relief site.

*Current Budget includes an additional \$89.2M to fund increase land and construction costs. The additional funds were approved by the Board of County Commissioners on June 16, 2020.

The New Elementary School - Elon/Hawk Ridge Relief current Budget includes 6.8M for Park and Recreation Project.

Bruns Academy Replacement current budget includes \$1.5M for Park and Recreation Project.

Current Program Budget reflects a reclass of \$7.4M in expenditures to 2007 Bond Program and \$14.4M in expenditures to 2013 Bond Program.

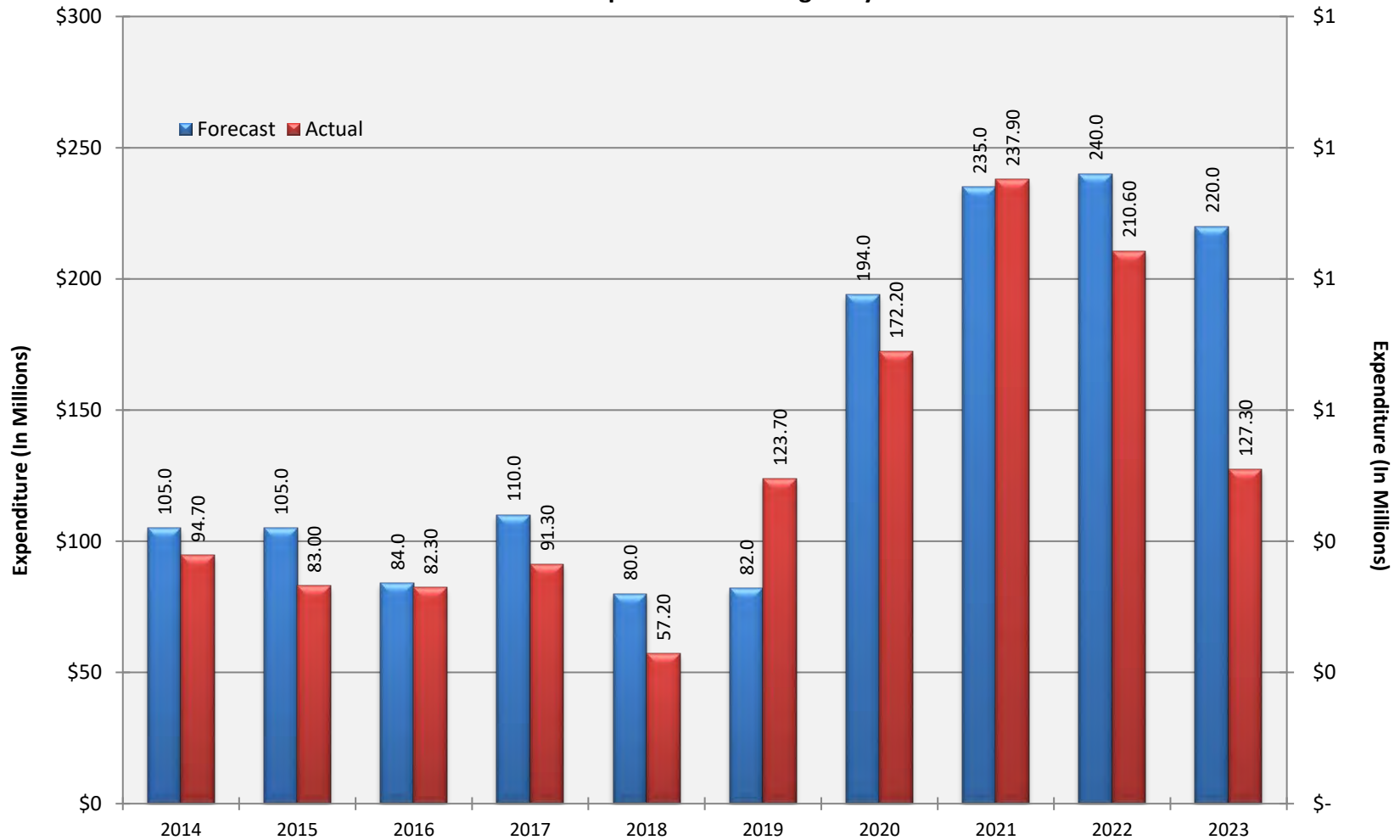
Charlotte-Mecklenburg Board of Education
Approved Construction or Repair Change Orders*
Reporting Period: July 2023

Funding Source	Project Name	Contractor	Description	Change Order Amount	Revised Contract Value
2017 Bond	Mint Hill Elementary School (17)	MetCon, Inc.	Contract Final Financial Reconciliation	(\$62,749.22)	\$24,362,600.78

* Not previously presented to the Board of Education for Approval

10 YEAR EXPENDITURE SUMMARY

Forecast Expenditure versus
Actual Expenditures through July 2023



GLOSSARY

Glossary

- **Project Management** – This section includes updates from our project managers and describes the currently active construction projects. This includes from Board of Education award thru final completion.
- **Design and Bidding** – This section contains updates from our design managers on the projects currently in the design phase. This phase from design award to Board of Education award of construction.
- **Controls** – Section includes misc. updates from controls group including expenditures, related Board of Education awards during the reporting period, cash flow information. This section covers all projects from approved bond through final expenditures and bond close with the county.
- **MWSBE** – Contains updates from the MWSBE Director and team, including current activity and summaries of the participation by MWSBE providers on our program.
- **Bond Progress Summary** – Provides a summary of bond financials including bond value, committed/pending amounts, paid to date, expended this month.
- **Project Procurement Dates** - Next 90 Days major project bid activity.
- **Mobile Swing Space Utilization** – Includes a summary of program related swing space currently in use and the schedule of use.
- **Bond Summary Schedule** – Current program summary schedule including planned design, construction and FF&E. These activities are fed from detailed schedules and are fine-tuned as project information is available.
- **Project Contractor Teams**; Provides summary of turnover dates for completed/closed projects since 2010 including architects/designers and contractors.
- **School Site Location Maps** – General location of bond projects (2017) by type.
- **Project Status Report** – This section of the report provides a summary of the bond project scope, current estimate (all sources), planned occupancy/actual occupancy date. It also provides a current status of the design phase, construction progress and a brief update. The report currently includes 2013 and 2017 bond projects that have or will be completed after to August 2016.
- **MWSBE Participation Report** – The MWSBE report provides a summary of the participation on the 2013 & 2017 Bond funded projects.
- **Project Progress Photos** – Includes photos of active construction projects.
- **Budget Summary Reports** – These reports are by funding source and summarize financial activity to date on the projects. This includes original and current project estimates, committed values, amounts paid to date, balances and monthly expenditures.
- **Change Orders < \$90,000** – This month's approved construction or repair change orders < \$90,000.
- **Expenditure Summary** – Provides a summary of Bond Expenditures by calendar year.