

# Capital Improvement Program

Monthly Bond Report  
June 2023



*Esperanza Global Academy*



---

## **CAPITAL PROGRAM SERVICES**

### **Capital Improvement Program**

## **JUNE 2023**

### **MONTHLY BOND REPORT**

#### **PROGRAM OVERVIEW**

- Project Management
- Design and Bidding
- Controls
- MWSBE
- Bond Progress Summary
- Project Procurement - Next 90 Days
- Bond Summary Schedule
- Project Contractor Teams; Projects in Design/Construction and Substantially Completed/Closed
- School Site Location Maps
  - Elementary Schools
  - Middle Schools
  - High Schools & Specialty Schools

#### **PROJECT STATUS REPORT**

#### **MWSBE PARTICIPATION REPORT**

#### **PROJECT PROGRESS PHOTOS**

#### **PROJECT CONTROLS**

- Budget Summary Reports
  - 2013 Bond Series
  - 2017 Bond Series
- Change Orders < \$90,000
- Expenditure Summary

#### **GLOSSARY**

# PROGRAM OVERVIEW

## PROJECT MANAGEMENT

The following is a summary of the activity on the bond funded projects in construction during the month of June.

The **Bruns Elementary School Replacement** project team progressed well over the month. The slab on grade for the classroom building was completed. The steel contractor mobilized and began installations of columns and beams. The mason continued with CMU installations throughout the site. The new building is scheduled for occupancy August of 2024.

The **Esperanza Global Academy** (*fka New ES Windsor, Winterfield, Idlewild Relief*) construction manager is complete with stone base for staff/visitor parking and ready to begin paving. The finish grades around the building have been established and sodding will begin shortly. The fence contractor is installing the site fencing. Mechanical, electrical and plumbing contractors have finalized above ceiling inspections and ceiling tiles are going in. VCT and classroom casework is now complete allowing final clean operations to commence. This new 45-classroom school is currently scheduled for occupancy August 2023.

The construction manager for the **Garinger Addition and Renovation** project has completed commissioning activities for the 300 Building renovations. The replacement glass and glazing work is ongoing in the 300 Building and expected to complete in July. The building was occupied in January 2023.

The **Grove Park Elementary School** (*fka New ES Hidden Valley, JW Grier, Newell*) construction manager has begun paving the shared staff/visitor parking lots. Finish grades have been established around the building and sodding will start shortly. The playground curb and drainage is complete and composite units are being installed. The interior building finishes including paint and VCT are progressing. The above ceiling inspections are also being approved allowing ceiling tiles to be installed. The electrical contractor is also installing finish devices at ceiling locations. The team continues to work through this and supply chain material delivery issues. This new 45-classroom is scheduled for occupancy August 2023.

The construction manager for **JT Williams Secondary Montessori** completed interior renovations for the 100 Building with the exception of the mechanical roof top units that have been impacted by supply chain issues. This, in conjunction with the timing of the required fire-line water taps, have impacted the early summer occupancy of the 100 Building. The 200 Building renovations have moved into finishes with a temporary mechanical roof top unit in place. Delivery of the permanent roof top mechanical units continue to impact the overall schedule for occupancy.

The **Lincoln Heights Montessori School** repurpose project renovations continue and have moved into Phase Two. The building occupants have now moved to E.E. Waddell. The front entrance visitor vestibule storefront system is installed and final glazing is taking place. Finishes including new VCT and carpet have been installed and final clean is being scheduled. FF&E moving operations will begin in July. The building is scheduled for occupancy August 2023.

The **Mountain Island Lake Academy Gym/Classroom Addition** construction manager is working on their closeout activities along with punch lists. The RTU units arrived late June and were installed. Final connections will be installed early July. The new building is scheduled for occupancy August 2023.

The **New Elementary School (Elon, Hawk Ridge, Polo Relief)** construction manager continued to manage multiple trades on the project. The mason continued brick installations on the building and recreation center. Exterior studs were installed along with the sheathing. The storefront window frames began installation along with the roofing systems with planned completion in July. The MEP trades continue their above ceiling and in wall rough-in throughout the building. The new 45-classroom elementary school is located across from the Ardrey Kell High School and is scheduled for occupancy August 2024.



The **New High School (South, Ardrey Relief)** construction manager continued with masonry installations, erection of structural steel and exterior metal studs. The roofer started installations on the buildings with load bearing masonry. The MEP trades began above ceiling rough-in on the first floor of the classroom wing along with interior metal studs. The site work contractor continued with the final installations of the underground detention, removal of excess soil and installation of the last retaining wall. The outbuilding slabs were installed and CMU masonry began installations. The new 100-classroom relief high school is scheduled for occupancy August 2024.

The **West Charlotte High School** construction manager continues to work on the Phase Two (demolition/site work). The north parking lot is progressing as stone is set for final paving. The front staff/visitor lot has the curb and gutter installed. This paving and front entrance access road will allow staff to transition to the front entrance this summer. The athletic fields have outfield fence being installed. The dugouts have been constructed and concession building is near completion. Athletic field irrigation is also progressing. The team continues to coordinate the project with school administration. The demolition and site work are scheduled for completion in August 2023.

## DESIGN AND BIDDING

The following is a summary of the activity on the bond funded projects in design and bidding phase during the month of June.

The **Northwest School of the Arts** project has been submitted for its building permit approval for Phase One. The Phase One design scope includes the underground storm water detention system and new car parking lot in preparation for Phase Two. The car parking modifications are scheduled to begin late summer of 2023. Phase Two design effort has progressed and design documents have been submitted to CMS for review and comments. Phase Two scope includes a new administration, visual/performing arts building and other campus renovations.

The **South Mecklenburg High School Addition** Phase One project GMP for work requiring long lead equipment and associated labor was approved and notice to proceed issued this month. The remaining scopes of work will be bid in later summer of 2023. The project consists of a 3-story classroom addition providing 19 classrooms that support the CTE program, visual arts and the JROTC program. The existing mobile classroom units have begun their relocation to allow construction of the new building. Occupancy of the new building is scheduled for January 2025.

## CONTROLS

Expenditures for the month of June were \$20.8M. This brings our fiscal year to date total to \$208.7M against the 2023 fiscal year cash flow projection of \$200M. The Controls team processed orders procure of goods and services necessary for the turnover of August 2023 occupancy projects. Additionally, the Controls team continues the reconciliation and closeout of completed 2013 and 2017 bond projects. Completed purchase orders are being closed out. Available funding identified from completed purchase orders are being accumulated to be used for future capital needs.

Board of Education approval was received on June 6, 2023 for Phase One construction of the South Mecklenburg Classroom building project.

The Controls team continues to submit notices of potential changes at school sites so senior staff can adequately evaluate any issues. Additionally, the Controls team continues the processing of contracts, invoices, preparing notices of potential change, change orders, pay applications, and check requests for projects under construction. Captured construction cost data is used to prepare financial reports such as detailed cost reports, budget summaries, reconciliation to CMS books, revisions to and updated cash flows and complete special financial requests by CMS

and Mecklenburg County. This process, along with data compilation and management, allows senior staff to provide the proper guidance/direction and accurate information to the program stakeholders.

## MWSBE

As of June 2023 the overall MWSBE utilization percentage related to design and construction of the 2017 bond projects is 45.70% which includes 19.53% participation by minority contractors, 24.57% by women contractors and 1.59% participation by small business contractors. This accounts for more than \$388 million of utilization by Minority, Women and Small Business Contractors.

The Diversity & Inclusion Office of Charlotte-Mecklenburg Schools continued to conduct several individual virtual orientations with new MWSBE contractors and prime contractors. In addition, team members also attended/hosted the following outreach sessions/pre-bid meetings and/or workforce development opportunities:

### Outreach Sessions:

- Metrolina Minority Contractors Association Steel Toe Boot Awards
- ASPIRE Entrepreneurial Graduation
- CMS Architectural/Engineering request for qualification pre-proposal meeting
- Supplier Diversity & Inclusion Roundtable
- Charlotte MED Week 2023 Planning

### Commendation:

- Congratulations to the following Metrolina Minority Contractors Association Steel Toe Boot Award Honorees: Skyline Construction – Residential Contractor of the Year, GP Supply- Supplier of the Year, Renz Collaborative Architecture – Professional Services Firm of the Year, Taylor Interiors – MWSBE Trade Partner of the Year, Precision Plumbing – Trade Partner of the Year, Purified Pros – Rising Starts of the Year, Harmon Construction Services – MWSBE General Contractor of the Year, Edifice – General Contractor of the Year, Chiquitha Lloyd – Diversity Change Agent of the Year, The Wonder Group – MMCA Outstanding Member, McKinney’s Inc – Outstanding Corporate Member. Award winners were selected for sound business strategies while driving economic development in the Charlotte-Mecklenburg region.

Over the next month, team members will continue to work with contractors interested in bidding on the upcoming school projects utilizing various virtual tools to communicate. Contractors are encouraged to review bid advertisements in Charlotte Observer and register as a vendor on the North Carolina Interactive Purchasing System for notification of the various opportunities.

## BOND PROGRESS SUMMARY As of June 2023

Funding Source and Value		Amount Committed/Pending	Amount Paid to Date	Amount Expended This Period
'13 Bond	\$316,067,527	\$314,489,827	\$314,356,487	<b>\$104,981</b>
'17 Bond	\$1,018,618,062	\$964,511,643	\$770,989,167	<b>\$20,737,618</b>
Grand Total	<b>\$1,334,685,589</b>	<b>\$1,279,001,470</b>	<b>\$1,085,345,654</b>	<b>\$20,842,599</b>

---

---

## UPCOMING MAJOR CONSTRUCTION PROCUREMENT DATES *Three Month Look Ahead*

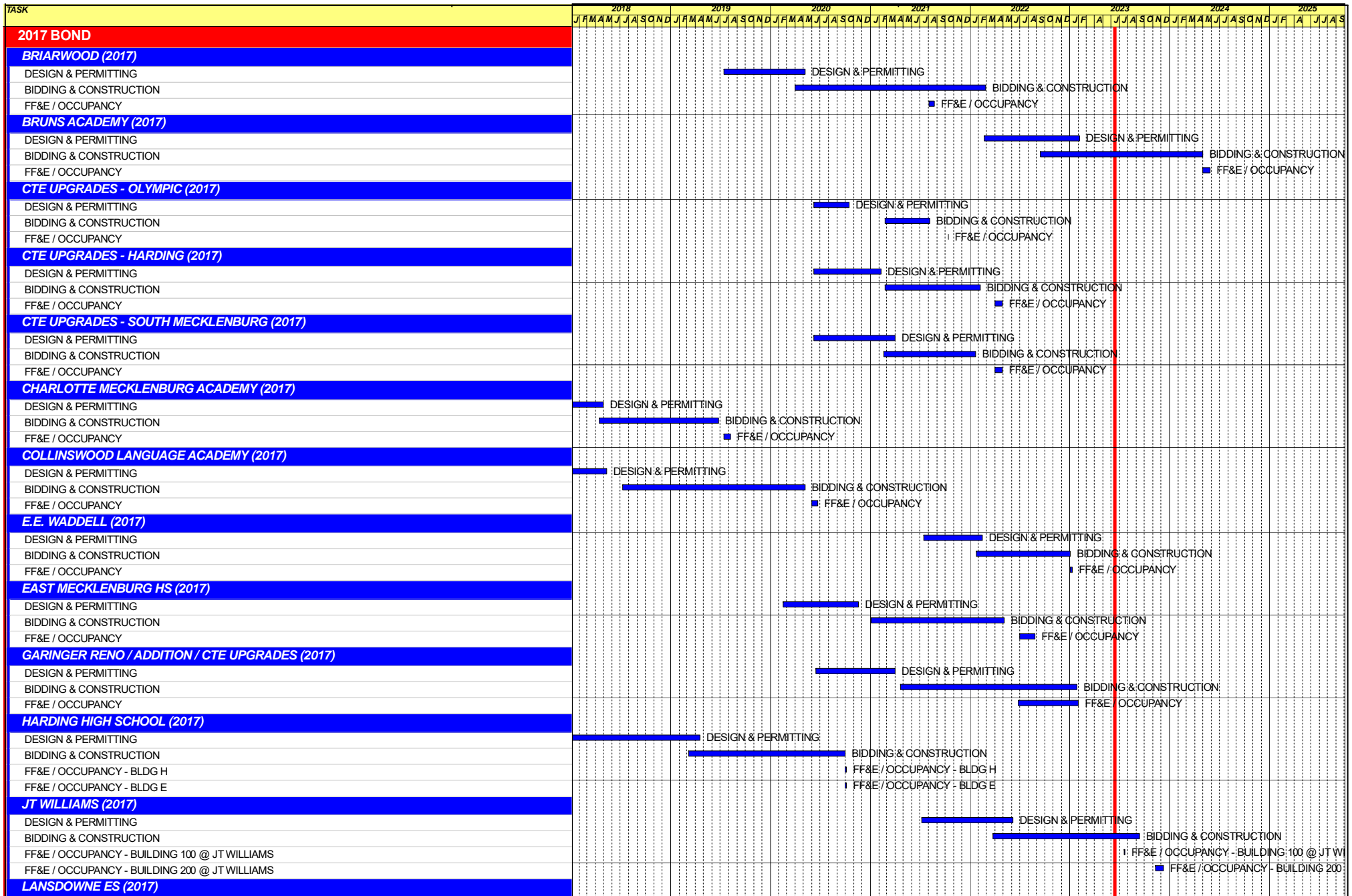
### **School Name**

**South Mecklenburg Phase Two**  
*Managed by CM (Balfour Beatty)*

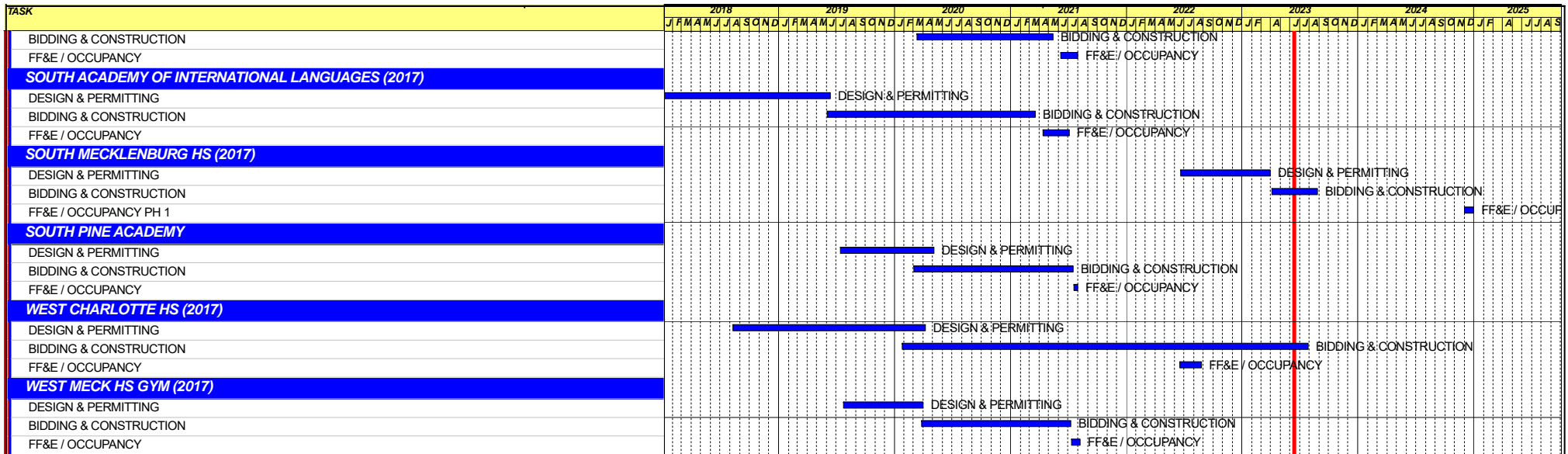
### **Bid Dates\***

**August 2023**

*\* NOTE: Work In Progress...Dates Subject to Change.*









**Capital Improvements Program**  
*Projects in Design or Under Construction*

School	Architect	General Contractor/CM
<b>Projects In Design</b>		
Northwest School of the Arts Addition (17)	LS3P	Balfour Beatty
South Mecklenburg High School Addition (17)	Morris Berg	Balfour Beatty
<b>Projects in Bid/Award/Construction Phase</b>		
Esperanza Global Academy (17)	Neighboring Concepts	Rodgers-Holt Brothers
Grove Park ES (17)	ADW	Edifice, Inc.
J.T. Williams (17)	FWA	New Atlantic
Lansdowne Elementary School Replacement (17)	Perkins Eastman	Edifice, Inc.
Lincoln Heights Repurpose (17)	Neighboring Concepts	Randolph & Sons
Mountain Island School (17)	ADW	Whiting-Turner
New ES (Elon, Hawk Ridge, Polo Ridge) (17)	Little Diversified	Balfour Beatty
New Bruns Avenue ES (17)	ADW	Edifice, Inc.
New HS (South, Ardrey) (17)	Ratio	Messer
West Charlotte High School (17)	LS3P	Rodgers-Holt Brothers

**Capital Improvements Program**  
***Projects Substantially Completed/Closed*** \*

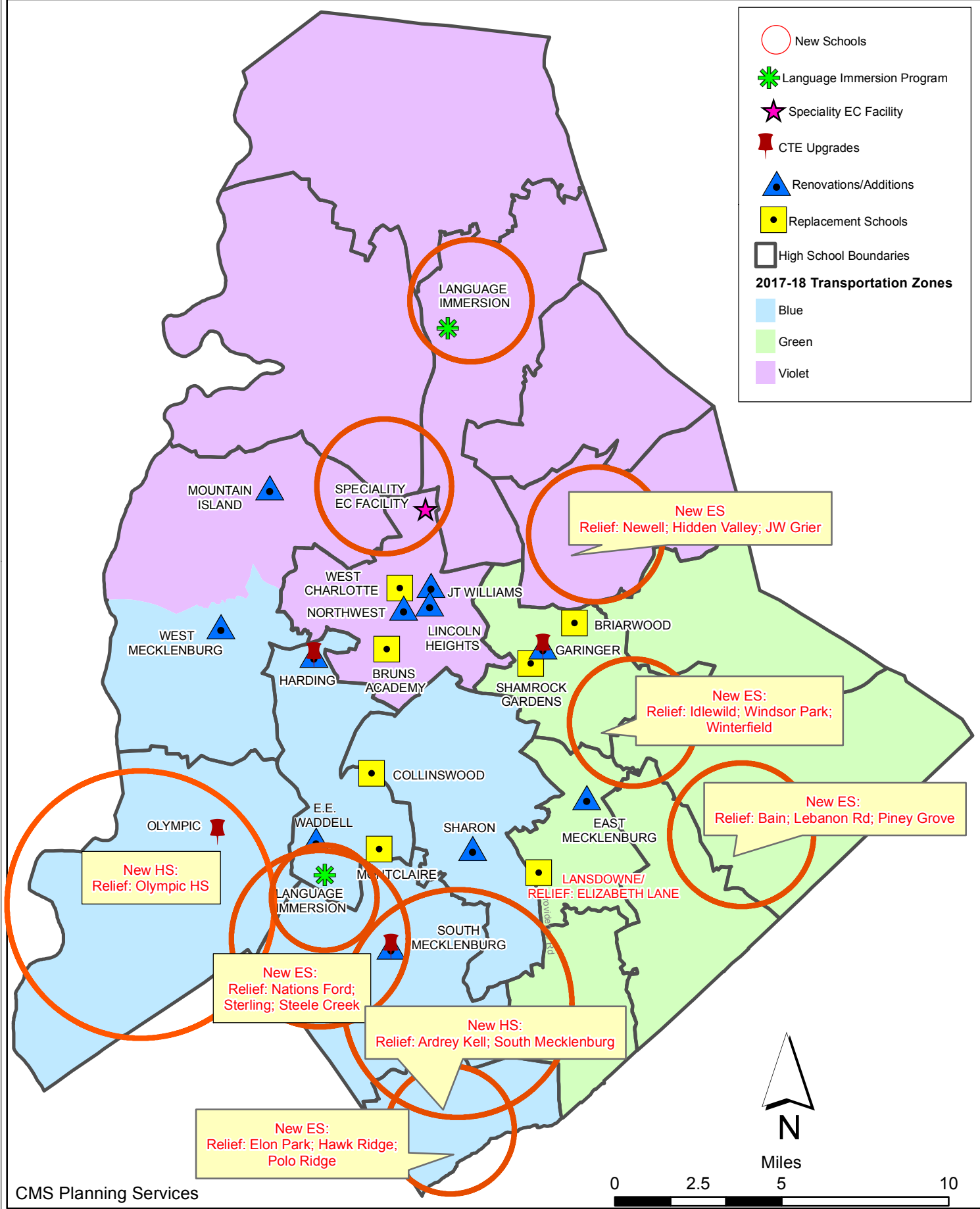
School	Turnover Year	Architect	General Contractor
E.E. Waddell (17)	Jan-23	Moseley	Randolph & Sons Builders
Garinger Addition/Renovation & CTE (17)	Jan-23	LS3P	Balfour Beatty
Palisades High School (Olympic Relief) (17)	Aug-22	Little Diversified	Edifice, Inc.
Shamrock Gardens Elementary School Replacement (17)	Aug-22	Little Diversified	Rodgers/Holt Brothers
Mint Hill ES (17) <i>(fka Bain, Lebanon Rd, Piney Grove)</i>	Aug-22	FWA	Metcon
East Mecklenburg High School (17)	May-22	Morris Berg	Turner Construction
CTE (Harding, Olympic, South) (17)	Jan-22	MPS	Branch Brownstone
Briarwood Elementary School Replacement (17)	Aug-21	ADW	New Atlantic Contracting
Montclair Elementary School (17)	Aug-21	WHN	Messer Construction
North Academy of World Languages (17)	Aug-21	ADW	New Atlantic Contracting
Sharon Elementary School (17)	Aug-21	Clark Nexsen	Samet
South Academy of International Languages (17)	Aug-21	FWA	Messer Construction
South Pine Academy (17)	Aug-21	FWA	Metcon
West Mecklenburg Gym (17)	Aug-21	Moseley	Barnhill/D.A. Everett
Collinswood Language Academy (17)	Aug-20	Perkins Eastman	Turner Construction
Harding High School Renovation (17)	Aug-20	SFLA	Barnhill Contracting
Rea Farms STEAM Academy (13)	Aug-20	Little Diversified	Balfour Beatty
Ashley Park K-8 Conversion (13)	Aug-19	ADW	Turner Construction
Druid Hills K-8 Conversion (13)	Aug-19	ADW	Edifice, Inc.
Selwyn Elementary (13)	Aug-19	Clark Nexsen	Balfour Beatty
Charlotte Mecklenburg Academy (17)	Aug-19	KSQ	Edifice, Inc.
Davidson K-8 (13)	Aug-19	Little Diversified	Gilbane
CTE - North Mecklenburg High (13)	Aug-19	LS3P	Shiel Sexton
CTE - Garinger (13)	Mar-19	LS3P	Hostetter & Son
CTE - Independence (13)	Mar-19	LS3P	D.E. Brown
CTE - West Mecklenburg (13)	Mar-19	LS3P	Hostetter & Son
Charlotte East Language Academy (13)	Aug-18	Morris Berg	Edifice, Inc
Myers Park High School Phase 3 (13)	Aug-18	Boomerang Design	BE&K
Northridge Middle (13)	Aug-18	Morris Berg	Barnhill Contracting
Myers Park High Bldg 2 (13)	Feb-18	Boomerang Design	BE&K
East Mecklenburg High Addition (13)	Jan-18	Bergman (fna Gantt Huberman)	Edifice, Inc.
J.M. Alexander Middle (13)	Aug-17	FWA Group	Balfour Beatty
Northwest School of the Arts Renovation (13)	Aug-17	Moseley	Turner Construction
Renaissance West STEAM Academy (13)	Aug-17	Little Diversified	Rodgers Construction
South Mecklenburg High Addition (13)	Jul-17	SFLA	Barnhill Contracting
Myers Park High Bldg 1 (13)	Sep-16	Boomerang	KBR
Statesville Road Elementary (13)	Aug-16	ADW	JE Dunn
Nations Ford Elementary (13)	Aug-16	Wash Hatem Nelson	Messer Construction
Olympic High Addition (13)	Aug-16	McMillan, Pazdan, Smith	Turner Construction
Lawrence Orr Elementary (07)	Aug-15	Cort Architecural Group	DH Griffin/Metcon
Parkside Elementary (07)	Aug-15	Wash Hatem Nelson	Clancy & Theys
Hawthorne High Renovations (07)	Aug-15	Morris-Berg	Balfour Beatty
Newell Elementary (07)	Aug-15	Perkins Eastman	New Atlantic Contracting
Ranson Middle (07)	Aug-15	Morris-Berg	Edifice, Inc.
Vance High	Jan-15	LS3P	Matthews Construction Co., Inc.
Garinger High - Renovations/Addition	Aug-14	Adams Group Architects	Turner Construction
Olympic High - Stadium	Aug-14	Site Solutions	Turner Construction
West Mecklenburg High - Stadium	Aug-14	Site Solutions	Turner Construction
Collinswood - Indoor Air Quality	Aug-14	PEA	The Bowers Group
Lansdowne - Indoor Air Quality	Aug-14	AeroRaq	Tyler 2
McKee Road - Indoor Air Quality	Aug-14	McCracken & Lopez	Godfrey Construction
Garinger High - Track & Field	Jul-14	Site Solutions	Turner Construction
Independence High - Gym	Jun-14	Shook Kelly	Shelco, Inc. (CM)
Palisades Park Elementary	May-14	Wash Hatem Nelson	Clancy & Theys

Capital Improvements Program  
*Projects Substantially Completed/Closed* \*

School	Turnover Year	Architect	General Contractor
East Mecklenburg High Auditorium	Jan-14	Gantt Huberman Associates	Godfrey Construction Co., Inc.

*Projects closed prior to 2014 are not shown*

# CMS Capital Improvement Plan 2017 Bond Projects



# PROJECT STATUS REPORT



## Monthly Project Status 2017 Bond Summary

June 2023

Project	Current Project Estimate	Project Scope	** Occupy On	Design Phase	Construction Progress	Project Status
Briarwood Elementary School (17)	\$ 31,243,066	45-classroom replacement facility; replaces school built in 1956.	August 2021	Complete	100 %	Project is complete.
Bruns Avenue Elementary School (17)	\$ 48,890,679	New 45-classroom elementary school (K-5); replaces old school built in 1969.	August 2024	Complete	15 %	The Bruns Elementary School Replacement project team progressed well over the month. The slab on grade for the classroom building was completed. The steel contractor mobilized and began installations of columns and beams. The mason continued with CMU installations throughout the site.
Career and Technology Education (17)	\$ 9,659,765	Phase I CTE upgrades at Olympic, Harding, Garinger and South Mecklenburg.	January 2022	Complete	100 %	Project is complete.
Charlotte-Mecklenburg Academy (17)	\$ 17,699,220	New EC school located on the old Statesville Elementary School site.	August 2019	Complete	100 %	Project is complete.
Collinswood Language Academy (17)	\$ 41,412,015	New 63-classroom K-8 facility on the site of the Smith Family Center.	August 2020	Complete	100 %	Project is complete.
E.E. Waddell (17)	\$ 5,137,367	Repurpose current E.E. Waddell to reopen as a magnet high school.	August 2023	Complete	100 %	Project is complete.
East Mecklenburg High School (17)	\$ 10,231,911	This project will provide for the design, and construction of a new 30 classroom building.	August 2022	Complete	99 %	Project is complete.

Monthly Project Status

2017 Bond Summary

June 2023

Project	Current Project Estimate	Project Scope	** Occupy On	Design Phase	Construction Progress	Project Status
Esperanza Global Academy (17)	\$ 45,855,770	New 45-classroom elementary school to relieve Windsor, Winterfield, and Idlewild ES.	August 2023	Complete	85 %	The Esperanza Global Academy (fka New ES Windsor, Winterfield, Idlewild Relief) construction manager is complete with stone base for staff/visitor parking and ready to begin paving. The finish grades around the building have been established and sodding will begin shortly. The fence contractor is installing the site fencing. Mechanical, electrical and plumbing contractors have finalized above ceiling inspections and ceiling tiles are going in. VCT and classroom casework is now complete allowing final clean operations to commence.
Garinger High School (17)	\$ 5,236,979	Project includes the design and construction for renovations of 300 building and a new 16 classroom building.	January 2023	Complete	98 %	The construction manager for the Garinger Addition and Renovation project has completed commissioning activities for the 300 Building renovations. The replacement glass and glazing work is ongoing in the 300 Building and expected to complete in July.
Grove Park Elementary School (17)	\$ 44,079,387	New 45-classroom elementary school; relieves overcrowding at Hidden Valley, J.W. Grier, Newell.	August 2023	Complete	87 %	The Grove Park Elementary School fka New ES Hidden Valley, JW Grier, Newell) construction manager has begun paving the shared staff/visitor parking lots. Finish grades have been established around the building and sodding will start shortly. The playground curb and drainage is complete and composite units are being installed. The interior building finishes including paint and VCT are progressing. The above ceiling inspections are also being approved allowing ceiling tiles to be installed. The electrical contractor is also installing finish devices at ceiling locations. The team continues to work through this and supply chain material delivery issues.
Harding High School (17)	\$ 13,747,878	Renovation of the kitchen, cafeteria, existing gym (aux) and the addition of a new gym.	August 2020	Complete	100 %	Project is complete.



Monthly Project Status

2017 Bond Summary

June 2023

Project	Current Project Estimate	Project Scope	** Occupy On	Design Phase	Construction Progress	Project Status
JT Williams (17)	\$ 17,032,600	Project includes building renovations to J.T. Williams Montessori magnet.	August 2024	Complete	80 %	The construction manager for JT Williams Secondary Montessori completed interior renovations for the 100 Building with the exception of the mechanical roof top units that have been impacted by supply chain issues. This, in conjunction with the timing of the required fire-line water taps, have impacted the early summer occupancy of the 100 Building. The 200 Building renovations have moved into finishes with a temporary mechanical roof top unit in place. Delivery of the permanent roof top mechanical units continue to impact the overall schedule for occupancy.
Lansdowne Elementary School (17)	\$ 33,804,188	New 45-classroom school; replaces old school built in 1959 and relieve crowding at Elizabeth Lane ES.	August 2022	Complete	97 %	The Lansdowne Elementary School playfield has been seeded and straw installed. The site contractor continues to work on stabilizing the site. Erosion control perimeter silt fence remains as grassing progresses. The new playgrounds have been installed and opened for students. The site work will be substantially completed in April.
Lincoln Heights Elementary School (17)	\$ 4,588,675	Repurpose and reopen as magnet school.	August 2023	Complete	81 %	The Lincoln Heights Montessori School repurpose project renovations continue and have moved into Phase Two. The building occupants have now moved to E.E. Waddell. The front entrance visitor vestibule storefront system is installed and final glazing is taking place. Finishes including new VCT and carpet have been installed and final clean is being scheduled. FF&E moving operations will begin in July.
Mint Hill Elementary School (17)	\$ 29,671,526	New 45-classroom elementary school; relieves crowding at Bain, Lebanon Road, Piney Grove.	August 2022	Complete	100 %	The Mint Hill Elementary School project has moved into the closeout phase. The new signal at the entrance to the schools is currently scheduled to occur spring/summer 2023.
Montclair Elementary School (17)	\$ 28,200,634	New 45-classroom replacement facility replacing school built in 1958.	August 2020	Complete	100 %	Project is complete.
Mountain Island Lake Academy (17)	\$ 13,239,686	K-8 Phase 2 - New gymnasium and specialty classrooms.	August 2023	Complete	95 %	The Mountain Island Lake Academy Gym/Classroom Addition construction manager is working on their closeout activities along with punch lists. The RTU units arrived late June and were installed. Final connections will be installed early July.

**Monthly Project Status**

2017 Bond Summary

June 2023

Project	Current Project Estimate	Project Scope	** Occupy On	Design Phase	Construction Progress	Project Status
New Elementary School (Elon, Hawk Ridge, Polo Relief) (17)	\$ 60,641,760	New 45-classroom elementary school to relieve Elon, Hawk Ridge, Polo.	August 2024	Complete	45 %	The New Elementary School (Elon, Hawk Ridge, Polo Relief) construction manager continued to manage multiple trades on the project. The mason continued brick installations on the building and recreation center. Exterior studs were installed along with the sheathing. The storefront window frames began installation along with the roofing systems with planned completion in July. The MEP trades continue their above ceiling and in wall rough-in throughout the building.
New High School (South, Ardrey) (17)	\$ 146,286,358	New 100 classroom high school to relieve South Mecklenburg, Ardrey Kell and Myers Park HS.	August 2024	Complete	42 %	The New High School (South, Ardrey Relief) construction manager continued with masonry installations, erection of structural steel and exterior metal studs. The roofer started installations on the buildings with load bearing masonry. The MEP trades began above ceiling rough-in on the first floor of the classroom wing along with interior metal studs. The site work contractor continued with the final installations of the underground detention, removal of excess soil and installation of the last retaining wall. The outbuilding slabs were installed and CMU masonry began installations.
North Academy of World Languages (17)	\$ 41,739,951	New 66 classroom K-8 Language Immersion facility located on the old J.M. Alexander Middle School site.	August 2021	Complete	100 %	Project is complete.
Northwest School of the Arts (17)	\$ 12,167,000	Replace classroom buildings B&D and build classroom addition that supports program. 1st phase includes parking and U/G stormwater.	January 2025	Construction Documents	0 %	The Northwest School of the Arts project has been submitted for its building permit approval for Phase One. The Phase One design scope includes the underground storm water detention system and new car parking lot in preparation for Phase Two. The car parking modifications are scheduled to begin late summer of 2023. Phase Two design effort has progressed and design documents have been submitted to CMS for review and comments. Phase Two scope includes a new administration, visual/performing arts building and other campus renovations.

**Monthly Project Status**

2017 Bond Summary

June 2023

Project	Current Project Estimate	Project Scope	** Occupy On	Design Phase	Construction Progress	Project Status
Palisades High School (17)	\$ 107,592,534	New 100 classroom high school; relieves crowding at Olympic High School.	August 2022	Complete	99 %	The Palisades High School (fka New High School Olympic Relief) has been occupied by staff and students. The construction manager is in the closeout phase and is working with trade contractors to complete punch list and open issues.
Shamrock Gardens Elementary School (17)	\$ 30,784,692	New 45-classroom replacement facility.	August 2022	Complete	100 %	Project is complete.
Sharon Elementary School (17)	\$ 9,125,862	Add 16 classroom building and increase capacity of cafeteria.	August 2021	Complete	100 %	Project is complete.
South Academy of International Languages (17)	\$ 40,669,909	New 71 classroom K-8 Language Immersion facility located on the old Nations Ford Elementary School site.	August 2021	Complete	100 %	Project is complete.
South Mecklenburg High School (17)	\$ 15,622,927	Renovate/replace two classroom buildings built in 1958 to upgrade learning conditions.	January 2025	Construction Documents	0 %	The South Mecklenburg High School Addition Phase One project GMP for work requiring long lead equipment and associated labor was approved and notice to proceed issued this month. The remaining scopes of work will be bid in later summer of 2023. The project consists of a 3-story classroom addition providing 19 classrooms that support the CTE program, visual arts and the JROTC program. The existing mobile classroom units have begun their relocation to allow construction of the new building.
South Pine Academy (17)	\$ 30,438,977	New 45-classroom elementary school to relieve Nations Ford, Sterling, and Steele Creek.	August 2021	Complete	100 %	Project is complete.

**Monthly Project Status**

2017 Bond Summary

June 2023

Project	Current Project Estimate	Project Scope	** Occupy On	Design Phase	Construction Progress	Project Status
West Charlotte High School (17)	\$ 104,413,163	New 100 classroom school to replace current facility built in 1954.	August 2022	Complete	96 %	The West Charlotte High School construction manager continues to work on the Phase Two (demolition/site work). The north parking lot is progressing as stone is set for final paving. The front staff/visitor lot has the curb and gutter installed. This paving and front entrance access road will allow staff to transition to the front entrance this summer. The athletic fields have outfield fence being installed. The dugouts have been constructed and concession building is near completion. Athletic field irrigation is also progressing. The team continues to coordinate the project with school administration.
West Mecklenburg High School (17)	\$ 6,259,479	Provide new gymnasium, the existing gymnasium will become the auxilliary.	August 2021	Complete	100 %	Project is complete.

# MWSBE PARTICIPATION REPORT

# Contract Status Report - MWSBE Participation Commitments

Report Date 7/20/2023

Charlotte-Mecklenburg Schools

7/20/2023 9:46:00 AM

2017 Bond Projects

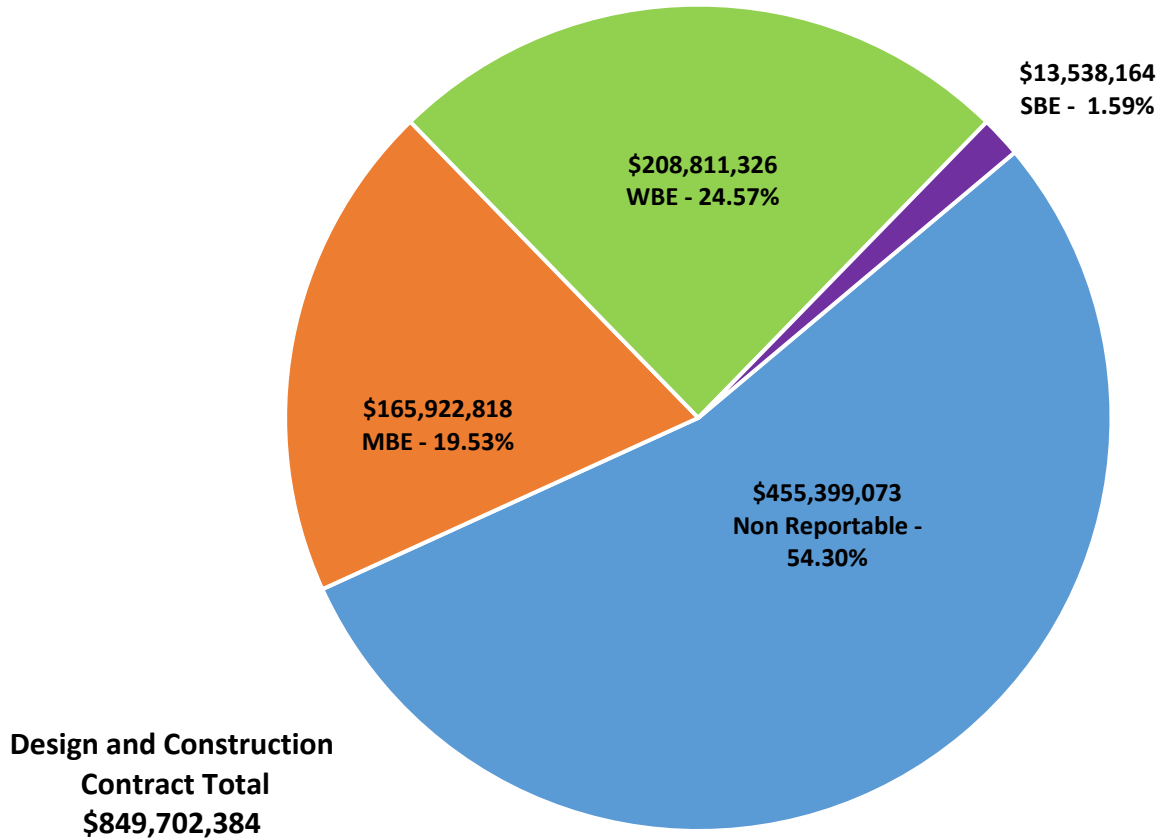
June 2023 Monthly Bond Report

Facility	Contract Amount	African American MBE\$	%	Other MBE \$	%	Total MBE \$	%	Other WBE \$	%	Other SBE \$	%	Total	%
<u>Briarwood Elementary School (17)</u>	\$28,413,151	\$4,075,384	14.34%	\$2,135,619	7.52%	\$6,211,003	21.86%	\$2,187,249	7.70%	\$187,102	0.66%	\$8,585,354	30.22%
<u>Career and Technology Education (17)</u>	\$5,594,345	\$522,870	9.35%	\$315,278	5.64%	\$838,148	14.98%	\$203,576	3.64%	\$65,475	1.17%	\$1,107,199	19.79%
<u>Charlotte-Mecklenburg Academy (17)</u>	\$17,035,852	\$198,536	1.17%	\$1,029,192	6.04%	\$1,227,728	7.21%	\$928,554	5.45%	\$13,200	0.08%	\$2,169,482	12.73%
<u>Collinswood Language Academy (17)</u>	\$38,527,704	\$649,287	1.69%	\$1,613,103	4.19%	\$2,262,390	5.87%	\$11,363,566	29.49%	\$8,328	0.02%	\$13,634,284	35.39%
<u>E.E. Waddell (17)</u>	\$2,140,532	\$0	0.00%	\$0	0.00%	\$0	0.00%	\$58,690	2.74%	\$0	0.00%	\$58,690	2.74%
<u>East Mecklenburg High School (17)</u>	\$12,642,198	\$603,811	4.78%	\$532,460	4.21%	\$1,136,271	8.99%	\$490,382	3.88%	\$681,075	5.39%	\$2,307,728	18.25%
<u>Esperanza Global Academy</u>	\$41,224,686	\$8,321,265	20.19%	\$4,417,406	10.72%	\$12,738,671	30.90%	\$25,892,094	62.81%	\$7,440	0.02%	\$38,638,205	93.73%
<u>Garinger High School (17)</u>	\$4,316,206	\$407,299	9.44%	\$1,452,056	33.64%	\$1,859,355	43.08%	\$913,472	21.16%	\$270,990	6.28%	\$3,043,818	70.52%
<u>Grove Park Elementary School</u>	\$38,660,600	\$5,493,635	14.21%	\$4,211,754	10.89%	\$9,705,389	25.10%	\$2,237,544	5.79%	\$25,600	0.07%	\$11,968,533	30.96%
<u>Harding High School (17)</u>	\$13,015,986	\$1,504,505	11.56%	\$310,356	2.38%	\$1,814,862	13.94%	\$4,010,831	30.81%	\$176	0.00%	\$5,825,869	44.76%
<u>JT Williams (17)</u>	\$15,509,768	\$973,801	6.28%	\$343,427	2.21%	\$1,317,228	8.49%	\$3,638,716	23.46%	\$51,800	0.33%	\$5,007,745	32.29%
<u>Lansdowne Elementary School (17)</u>	\$30,775,402	\$2,809,680	9.13%	\$877,274	2.85%	\$3,686,954	11.98%	\$2,267,461	7.37%	\$223,625	0.73%	\$6,178,040	20.07%
<u>Lincoln Heights Elementary School (17)</u>	\$2,693,087	\$318,959	11.84%	\$18,800	0.70%	\$337,759	12.54%	\$56,330	2.09%	\$74,503	2.77%	\$468,592	17.40%
<u>Mint Hill Elementary School (17)</u>	\$25,910,259	\$5,223,675	20.16%	\$18,007,208	69.50%	\$23,230,883	89.66%	\$1,201,089	4.64%	\$308,370	1.19%	\$24,740,342	95.48%
<u>Montclair Elementary School (17)</u>	\$26,093,784	\$3,617,952	13.87%	\$2,260,381	8.66%	\$5,878,333	22.53%	\$5,754,566	22.05%	\$493,707	1.89%	\$12,126,605	46.47%
<u>Mountain Island Lake Academy (17)</u>	\$12,514,576	\$171,533	1.37%	\$779,166	6.23%	\$950,699	7.60%	\$918,248	7.34%	\$30,300	0.24%	\$1,899,247	15.18%
<u>New Elementary School (Elon, Hawk R</u>	\$45,539,599	\$5,793,101	12.72%	\$1,016,850	2.23%	\$6,809,951	14.95%	\$8,527,827	18.73%	\$1,299,553	2.85%	\$16,637,331	36.53%
<u>New High School (South, Ardrey) (17)</u>	\$132,951,739	\$2,642,133	1.99%	\$5,148,531	3.87%	\$7,790,664	5.86%	\$12,997,901	9.78%	\$4,294,119	3.23%	\$25,082,683	18.87%
<u>North Academy of World Languages (</u>	\$38,090,783	\$1,688,775	4.43%	\$1,575,863	4.14%	\$3,264,638	8.57%	\$3,472,318	9.12%	\$436,793	1.15%	\$7,173,748	18.83%
<u>Northwest School of the Arts (17)</u>	\$9,006,136	\$0	0.00%	\$37,000	0.41%	\$37,000	0.41%	\$29,335	0.33%	\$0	0.00%	\$66,335	0.74%
<u>Palisades High School (17)</u>	\$98,070,130	\$13,504,638	13.77%	\$7,587,760	7.74%	\$21,092,398	21.51%	\$13,786,630	14.06%	\$2,996,568	3.06%	\$37,875,596	38.62%
<u>Shamrock Gardens Elementary School</u>	\$27,189,620	\$2,478,054	9.11%	\$1,636,383	6.02%	\$4,114,438	15.13%	\$21,087,460	77.56%	\$259,554	0.95%	\$25,461,452	93.64%
<u>Sharon Elementary School (17)</u>	\$8,534,491	\$326,844	3.83%	\$283,497	3.32%	\$610,341	7.15%	\$926,873	10.86%	\$217,984	2.55%	\$1,755,197	20.57%
<u>South Academy of International Langu</u>	\$37,073,557	\$6,023,141	16.25%	\$2,431,071	6.56%	\$8,454,212	22.80%	\$10,945,346	29.52%	\$313,999	0.85%	\$19,713,557	53.17%

Facility	Contract Amount	African American MBE\$	%	Other MBE \$	%	Total MBE \$	%	Other WBE \$	%	Other SBE \$	%	Total	%
<u>South Mecklenburg High School (17)</u>	\$6,997,682	\$0	0.00%	\$0	0.00%	\$0	0.00%	\$0	0.00%	\$0	0.00%	\$0	0.00%
<u>South Pine Academy (17)</u>	\$26,161,268	\$916,165	3.50%	\$19,205,893	73.41%	\$20,122,058	76.92%	\$4,342,256	16.60%	\$237,754	0.91%	\$24,702,068	94.42%
<u>West Charlotte High School (17)</u>	\$95,209,851	\$14,421,281	15.15%	\$5,216,954	5.48%	\$19,638,234	20.63%	\$68,509,259	71.96%	\$756,375	0.79%	\$88,903,868	93.38%
<u>West Mecklenburg High School (17)</u>	\$9,809,391	\$283,809	2.89%	\$509,403	5.19%	\$793,212	8.09%	\$2,063,752	21.04%	\$283,775	2.89%	\$3,140,739	32.02%
<b>Grandtotal</b>	<b>\$849,702,384</b>	<b>\$82,970,134</b>	<b>9.76%</b>	<b>\$82,952,684</b>	<b>9.76%</b>	<b>\$165,922,818</b>	<b>19.53%</b>	<b>\$208,811,326</b>	<b>24.57%</b>	<b>\$13,538,164</b>	<b>1.59%</b>	<b>\$388,272,308</b>	<b>45.70%</b>



### MWSBE Participation 2017 Bond Projects



# MONTHLY PROJECT PHOTOS



New ES Elon Park, Hawk Ridge, Polo Ridge

# PROJECT PROGRESS PHOTOS

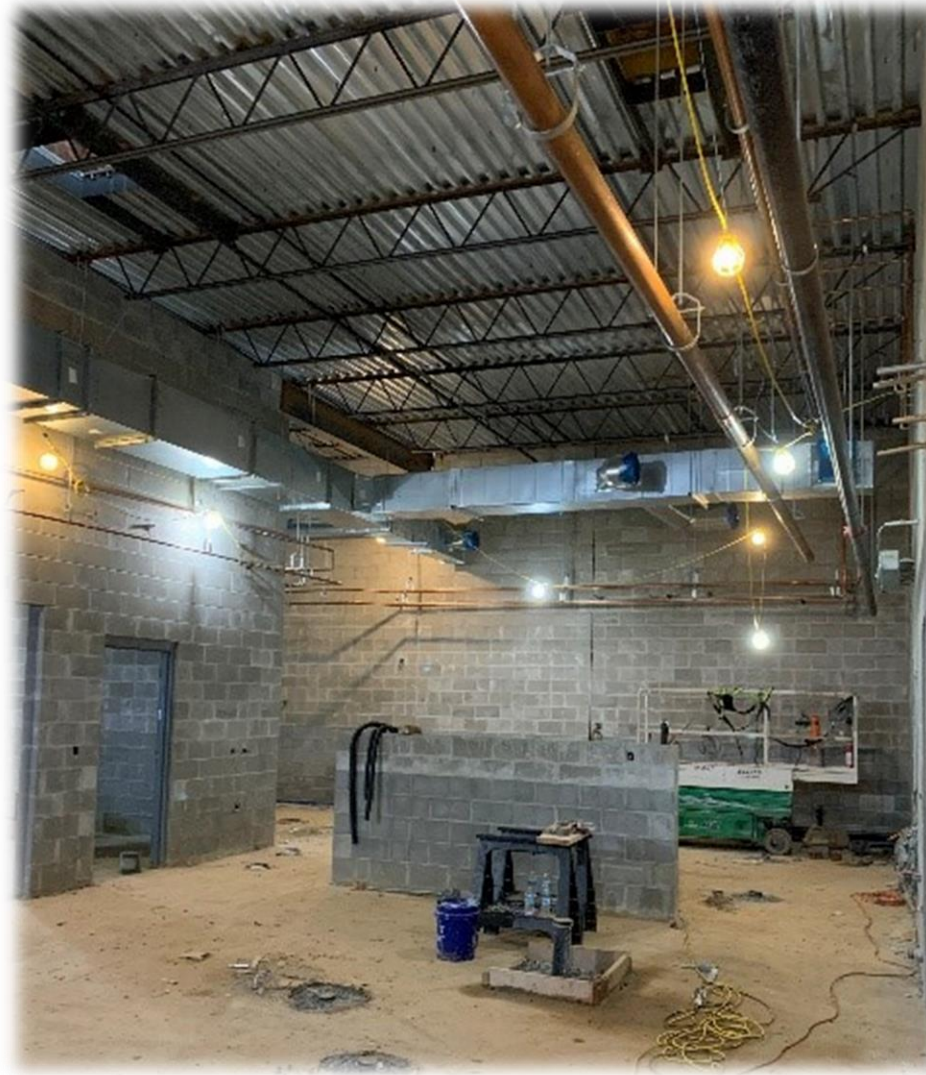
---



New ES Elon Park, Hawk Ridge, Polo Ridge



# PROJECT PROGRESS PHOTOS



New ES Elon Park, Hawk Ridge, Polo Ridge

# PROJECT PROGRESS PHOTOS



New HS Ardrey Kell, South Mecklenburg



# PROJECT PROGRESS PHOTOS

---



New HS Ardrey Kell, South Mecklenburg



# PROJECT PROGRESS PHOTOS

---



New HS Ardrey Kell, South Mecklenburg



New HS Ardrey Kell, South Mecklenburg





Esperanza Global Academy



Esperanza Global Academy





Esperanza Global Academy



Esperanza Global Academy



# PROJECT PROGRESS PHOTOS

---



Grove Park Elementary School

# PROJECT PROGRESS PHOTOS

---



Grove Park Elementary School





Grove Park Elementary School

# PROJECT PROGRESS PHOTOS

---



Mountain Island Lake Academy



Mountain Island Lake Academy



# PROJECT PROGRESS PHOTOS



Mountain Island Lake Academy



Bruns Elementary School Replacement



# PROJECT PROGRESS PHOTOS

---



Bruns Elementary School Replacement

# PROJECT PROGRESS PHOTOS



JT Williams



# PROJECT PROGRESS PHOTOS



Lincoln Heights



# PROJECT PROGRESS PHOTOS

---



West Charlotte High School Phase 2



West Charlotte High School Phase 2

# PROJECT CONTROLS

**CHARLOTTE-MECKLENBURG BOARD OF EDUCATION  
2013 BOND SERIES-CAPITAL IMPROVEMENT PROGRAM  
BUDGET STATUS REPORT**

	Original Project Budget	Current Project Budget	Committed Amount	Approved Change Orders	Total Committed	Pending Commitments	To Be Committed	Prev Paid To Date	Paid To Date	Balance To Complete	Monthly Expenditure
	(A)	(B)	(C)	(D)	(E)=C+D	(F)	(G)=(B-E-F)	(H)	(I)	(J)=(B-I)	(K)=(I-H)
<b><u>A. REPLACEMENT &amp; RENOVATIONS</u></b>											
1 Career & Technology Education Institutes Phase 1:	\$8,640,000	\$18,697,857	\$6,811,184	\$11,886,062	\$18,697,246	\$0	\$611	\$18,458,928	\$18,563,909	\$133,948	\$104,981
2 Davidson K-8 Conversion	\$9,500,000	\$13,461,149	\$2,131,151	\$11,329,998	\$13,461,149	\$0	\$0	\$13,461,149	\$13,461,149	\$0	\$0
3 J.M. Alexander Middle Replacement	\$30,672,000	\$29,845,539	\$4,502,518	\$25,343,021	\$29,845,539	\$0	\$0	\$29,845,539	\$29,845,539	\$0	\$0
4 Nations Ford Elementary Replacement	\$19,440,000	\$19,231,604	\$3,958,871	\$15,272,733	\$19,231,604	\$0	\$0	\$19,231,604	\$19,231,604	\$0	\$0
5 Northwest School of the Arts	\$12,420,000	\$12,868,718	\$2,047,917	\$10,820,801	\$12,868,718	\$0	\$0	\$12,868,719	\$12,868,719	\$0	\$0
6 Oakhurst STEAM Magnet Elementary/Starmount	\$5,940,000	\$5,407,812	\$3,471,397	\$1,936,415	\$5,407,812	\$0	\$0	\$5,407,812	\$5,407,812	\$0	\$0
7 Pre-K-8 Conversions Phase II: Ashley Park/ Bruns	\$24,732,000	\$19,700,807	\$4,167,671	\$15,533,138	\$19,700,809	\$0	\$0	\$19,700,807	\$19,700,807	\$0	\$0
8 Selwyn Elementary	\$2,592,000	\$4,624,831	\$744,799	\$3,880,032	\$4,624,831	\$0	\$0	\$4,624,831	\$4,624,831	\$0	\$0
9 Statesville Road Elementary	\$20,340,000	\$20,648,509	\$5,081,473	\$15,567,037	\$20,648,509	\$0	\$0	\$20,648,509	\$20,648,509	\$0	\$0
10 West Mecklenburg HS	\$0	\$3,993,543	\$3,993,543	\$0	\$3,993,543	\$0	\$0	\$3,993,543	\$3,993,543	\$0	\$0
<b>Total Replacement &amp; Renovations</b>	<b>\$134,276,000</b>	<b>\$148,480,367</b>	<b>\$36,910,523</b>	<b>\$111,569,237</b>	<b>\$148,479,760</b>	<b>\$0</b>	<b>\$612</b>	<b>\$148,241,440</b>	<b>\$148,346,421</b>	<b>\$133,946</b>	<b>\$104,981</b>
<b><u>B. RESPONSE TO ENROLLMENT GROWTH</u></b>											
1 East Mecklenburg High Addition	\$12,744,000	\$12,083,804	\$4,465,200	\$7,618,603	\$12,083,803	\$0	\$0	\$12,083,803	\$12,083,803	\$0	\$0
2 Myers Park High Addition	\$22,248,000	\$11,040,942	\$1,207,493	\$9,833,448	\$11,040,942	\$0	\$0	\$11,040,941	\$11,040,941	\$0	\$0
3 Northridge Middle Addition	\$6,448,000	\$6,366,170	\$2,114,306	\$4,251,865	\$6,366,171	\$0	\$0	\$6,366,171	\$6,366,171	\$0	\$0
4 Olympic High Addition/Renovation	\$8,964,000	\$8,947,310	\$2,002,694	\$6,944,615	\$8,947,310	\$0	\$0	\$8,947,310	\$8,947,310	\$0	\$0
5 South Mecklenburg High Addition	\$18,360,000	\$16,307,355	\$2,922,282	\$13,385,073	\$16,307,355	\$0	\$0	\$16,307,355	\$16,307,355	\$0	\$0
6 Charlotte East Language Academy (FKA -New Lang	\$30,376,000	\$31,387,929	\$5,740,182	\$25,647,747	\$31,387,929	\$0	\$0	\$31,387,929	\$31,387,929	\$0	\$0
7 Rea Farms STEAM Academy	\$31,376,000	\$40,476,000	\$9,077,465	\$29,821,441	\$38,898,906	\$0	\$1,577,094	\$38,898,906	\$38,898,906	\$1,577,094	\$0
8 Renaissance West STEAM Academy (FKA New Pre-	\$30,376,000	\$31,698,952	\$5,667,388	\$26,031,564	\$31,698,952	\$0	\$0	\$31,698,952	\$31,698,952	\$0	\$0
9 New High School - South Meck/Ardrey Kell Relief *	\$0	\$9,278,699	\$9,278,699	\$0	\$9,278,699	\$0	\$0	\$9,278,699	\$9,278,699	\$0	\$0
<b>Total Response to Enrollment Growth</b>	<b>\$160,892,000</b>	<b>\$167,587,161</b>	<b>\$42,475,710</b>	<b>\$123,534,357</b>	<b>\$166,010,067</b>	<b>\$0</b>	<b>\$1,577,094</b>	<b>\$166,010,066</b>	<b>\$166,010,066</b>	<b>\$1,577,095</b>	<b>\$0</b>
<b><u>C. CONTINGENCY</u></b>											
	\$0	\$0	\$0	\$0	\$0	\$0	\$0	\$0	\$0	\$0	\$0
<b>Total Contingency</b>	<b>\$0</b>	<b>\$0</b>	<b>\$0</b>	<b>\$0</b>	<b>\$0</b>	<b>\$0</b>	<b>\$0</b>	<b>\$0</b>	<b>\$0</b>	<b>\$0</b>	<b>\$0</b>
<b>TOTAL LOCAL BOND PROGRAM</b>	<b>\$295,168,000</b>	<b>\$316,067,527</b>	<b>\$79,386,233</b>	<b>\$235,103,594</b>	<b>\$314,489,827</b>	<b>\$0</b>	<b>\$1,577,706</b>	<b>\$314,251,506</b>	<b>\$314,356,487</b>	<b>\$1,711,040</b>	<b>\$104,981</b>

Original project estimated costs approved by the Board Of Education on July 23, 2013 and approved by the voters of Mecklenburg County on November 5, 2013.

Note: Mecklenburg County's appropriated interest from COPS to increase funding for the 2013 Bond Program.

**CHARLOTTE-MECKLENBURG BOARD OF EDUCATION  
2017 BOND SERIES-CAPITAL IMPROVEMENT PROGRAM  
BUDGET STATUS REPORT**

	Original Project Budget	Current Project Budget	Committed Amount	Approved Change Orders	Total Committed	Pending Commitments	To Be Committed	Prev Paid To Date	Paid To Date	Balance To Complete	Monthly Expenditure
	(A)	(B)	(C)	(D)	(E)=C+D	(F)	(G)=(B-E-F)	(H)	(I)	(J)=(B-I)	(K)=(I-H)
<b><u>A. REPLACEMENT &amp; RENOVATIONS</u></b>											
1 Briarwood Elementary *	\$29,091,619	\$31,243,066	\$4,730,586	\$26,410,339	\$31,140,925	(\$1,500)	\$103,642	\$31,129,457	\$31,129,457	\$113,609	\$0
2 Bruns Academy Replacement	\$34,207,808	\$48,890,679	\$4,190,875	\$42,406,336	\$46,597,211	\$1,500	\$2,291,969	\$7,026,705	\$8,974,227	\$39,916,452	\$1,947,522
3 Career & Technology Education Upgrades	\$10,101,734	\$9,659,765	\$2,290,761	\$3,766,908	\$6,057,669	(\$176)	\$3,602,272	\$5,692,038	\$5,692,038	\$3,967,727	\$0
4 Collinswood K-8 *	\$44,172,540	\$41,412,015	\$4,927,263	\$36,484,752	\$41,412,015	\$0	\$0	\$41,401,384	\$41,401,384	\$10,631	\$0
5 East Mecklenburg HS	\$12,771,594	\$10,231,911	(\$1,659,510)	\$11,823,832	\$10,164,322	\$0	\$67,590	\$10,085,792	\$10,132,098	\$99,813	\$46,305
6 Garinger HS	\$13,936,979	\$5,236,979	\$1,598,246	\$3,534,819	\$5,133,064	\$0	\$103,915	\$4,225,518	\$4,249,372	\$987,607	\$23,854
7 Harding University High *	\$18,330,263	\$13,747,878	\$2,045,267	\$11,702,610	\$13,747,877	\$0	\$0	\$13,747,877	\$13,747,877	\$0	\$0
8 Charlotte-Mecklenburg Academy (FKA -EC Specialty	\$18,957,960	\$17,699,220	\$2,175,504	\$15,523,717	\$17,699,220	\$0	\$0	\$17,699,220	\$17,699,220	\$0	\$0
9 Lansdowne Elementary	\$29,391,270	\$33,804,188	\$3,974,078	\$29,465,004	\$33,439,081	\$41,075	\$324,032	\$31,395,256	\$31,837,349	\$1,966,840	\$442,093
10 Lincoln Heights Elementary	\$3,740,478	\$4,588,675	\$2,707,996	\$817,550	\$3,525,547	\$0	\$1,063,128	\$1,732,368	\$2,012,487	\$2,576,188	\$280,119
11 Montclair Elementary Replacement *	\$28,559,390	\$28,200,634	\$2,426,761	\$25,773,873	\$28,200,634	\$0	\$0	\$28,200,634	\$28,200,634	\$0	\$0
12 Mountain Island k-8	\$9,218,439	\$13,239,686	\$1,662,409	\$11,418,864	\$13,081,273	\$12,000	\$146,413	\$9,261,972	\$10,478,799	\$2,760,887	\$1,216,826
13 Northwest School of the Arts	\$17,632,202	\$12,167,000	\$5,180,357	(\$613,656)	\$4,566,701	\$0	\$7,600,299	\$1,144,441	\$1,627,997	\$10,539,003	\$483,556
14 Shamrock Gardens Elementary *	\$29,890,351	\$30,784,692	\$3,463,459	\$26,234,783	\$29,698,242	\$0	\$1,086,450	\$29,216,782	\$29,256,040	\$1,528,652	\$39,258
15 Sharon Elementary	\$7,706,528	\$9,125,862	\$1,430,125	\$7,675,679	\$9,105,804	\$0	\$20,058	\$9,067,791	\$9,067,791	\$58,071	\$0
16 South Mecklenburg HS	\$13,352,143	\$15,622,927	\$1,810,971	\$5,852,296	\$7,663,267	\$0	\$7,959,660	\$761,024	\$763,856	\$14,859,071	\$2,831
17 E.E. Waddell Magnet HS	\$4,571,709	\$5,137,367	\$2,913,584	\$290,338	\$3,203,921	\$0	\$1,933,446	\$2,043,058	\$2,056,719	\$3,080,648	\$13,661
18 West Charlotte HS Replacement	\$109,977,166	\$104,413,163	\$11,914,914	\$91,558,299	\$103,473,213	\$31,500	\$908,450	\$96,333,878	\$97,364,595	\$7,048,568	\$1,030,717
19 West Mecklenburg HS	\$11,065,440	\$6,259,479	(\$2,371,639)	\$8,631,118	\$6,259,479	\$0	\$0	\$6,260,654	\$6,260,654	\$0	\$0
20 John Taylor Williams	\$13,964,339	\$17,032,600	\$3,590,899	\$12,492,488	\$16,083,387	\$172,366	\$776,847	\$10,453,782	\$11,445,474	\$5,587,126	\$991,692
<b>Total Replacement &amp; Renovations</b>	<b>\$460,639,952</b>	<b>\$458,497,787</b>	<b>\$59,002,904</b>	<b>\$371,249,948</b>	<b>\$430,252,852</b>	<b>\$256,765</b>	<b>\$27,988,170</b>	<b>\$356,879,633</b>	<b>\$363,398,068</b>	<b>\$95,099,718</b>	<b>\$6,518,436</b>
<b><u>B. RESPONSE TO ENROLLMENT GROWTH</u></b>											
1 South Academy of International Languages	\$45,359,367	\$40,669,909	\$5,953,333	\$34,716,308	\$40,669,641	\$0	\$268	\$40,586,977	\$40,586,977	\$82,932	\$0
2 North Academy of World Languages (FKA - New K-8	\$45,359,367	\$41,739,951	\$6,022,055	\$35,717,896	\$41,739,951	\$0	\$0	\$41,742,062	\$41,742,062	\$0	\$0
3 South Pine Academy (FKA - New ES Nations Ford, S	\$29,173,829	\$30,438,977	\$6,842,534	\$23,596,443	\$30,438,977	\$0	\$0	\$30,474,698	\$30,474,698	\$0	\$0
4 Mint Hill Elementary School	\$29,988,332	\$29,671,526	\$3,296,223	\$25,964,556	\$29,260,779	\$0	\$410,747	\$28,644,370	\$28,644,410	\$1,027,115	\$40
5 New Elementary School - Windsor Park Relief *	\$30,422,230	\$45,855,770	\$13,285,284	\$31,504,771	\$44,790,055	\$111,113	\$954,603	\$29,538,560	\$32,520,661	\$13,335,110	\$2,982,101
6 New Elementary School - Elon/Hawk Ridge Relief *	\$30,426,712	\$60,641,761	\$16,480,884	\$43,464,051	\$59,944,934	\$18,400	\$678,426	\$32,674,702	\$34,856,471	\$25,785,289	\$2,181,769
7 New Elementary School - Hidden Valley Relief	\$30,518,345	\$44,079,387	\$6,516,448	\$36,597,989	\$43,114,437	\$8,000	\$956,950	\$29,432,350	\$31,431,734	\$12,647,653	\$1,999,385
8 Palisades High School	\$109,908,793	\$107,592,534	\$10,901,447	\$96,401,797	\$107,303,244	\$20,042	\$269,248	\$104,840,583	\$105,347,893	\$2,244,641	\$507,311
9 New High School - South Meck/Ardrey Kell Relief *	\$110,287,621	\$146,286,358	\$11,332,072	\$125,664,701	\$136,996,773	\$663,270	\$8,626,315	\$55,437,614	\$61,986,191	\$84,300,167	\$6,548,577
<b>Total Response to Enrollment Growth</b>	<b>\$461,444,596</b>	<b>\$546,976,173</b>	<b>\$80,630,280</b>	<b>\$453,628,511</b>	<b>\$534,258,791</b>	<b>\$820,826</b>	<b>\$11,896,557</b>	<b>\$393,371,916</b>	<b>\$407,591,098</b>	<b>\$139,385,075</b>	<b>\$14,219,182</b>
<b><u>C. CONTINGENCY</u></b>											
	\$0	\$0	\$0	\$0	\$0	\$0	\$0	\$0	\$0	\$0	\$0
<b>Total Contingency</b>	<b>\$0</b>	<b>\$0</b>	<b>\$0</b>	<b>\$0</b>	<b>\$0</b>	<b>\$0</b>	<b>\$0</b>	<b>\$0</b>	<b>\$0</b>	<b>\$0</b>	<b>\$0</b>

**CHARLOTTE-MECKLENBURG BOARD OF EDUCATION  
2017 BOND SERIES-CAPITAL IMPROVEMENT PROGRAM  
BUDGET STATUS REPORT**

	Original Project Budget	Current Project Budget	Committed Amount	Approved Change Orders	Total Committed	Pending Commitments	To Be Committed	Prev Paid To Date	Paid To Date	Balance To Complete	Monthly Expenditure
	(A)	(B)	(C)	(D)	(E)=C+D	(F)	(G)=(B-E-F)	(H)	(I)	(J)=(B-I)	(K)=(I-H)
<b>TOTAL LOCAL BOND PROGRAM</b>	<b>\$922,084,548</b>	<b>\$1,005,473,960</b>	<b>\$139,633,184</b>	<b>\$824,878,459</b>	<b>\$964,511,643</b>	<b>\$1,077,590</b>	<b>\$39,884,727</b>	<b>\$750,251,549</b>	<b>\$770,989,167</b>	<b>\$234,484,793</b>	<b>\$20,737,618</b>

Original project estimated costs approved by the Board Of Education on July 25, 2017 approved by the voters of Mecklenburg County on November 7, 2017.

\*Project included in \$33.2M early funding approved by Board Of Education on August 9, 2016 and Mecklenburg Board of County Commissioners on September 6, 2016. On February 19, 2019 an additional \$8M was approved for New Elementary School - Elon/Hawk Ridge Relief site.

\*Current Budget includes an additional \$89.2M to fund increase land and construction costs. The additional funds were approved by the Board of County Commissioners on June 16, 2020.

The New Elementary School - Elon/Hawk Ridge Relief current Budget includes 6.8M for Park and Recreation Project.

Bruns Academy Replacement current budget includes \$1.5M for Park and Recreation Project.

Current Program Budget reflects a reclass of \$7.4M in expenditures to 2007 Bond Program and \$14.4M in expenditures to 2013 Bond Program.



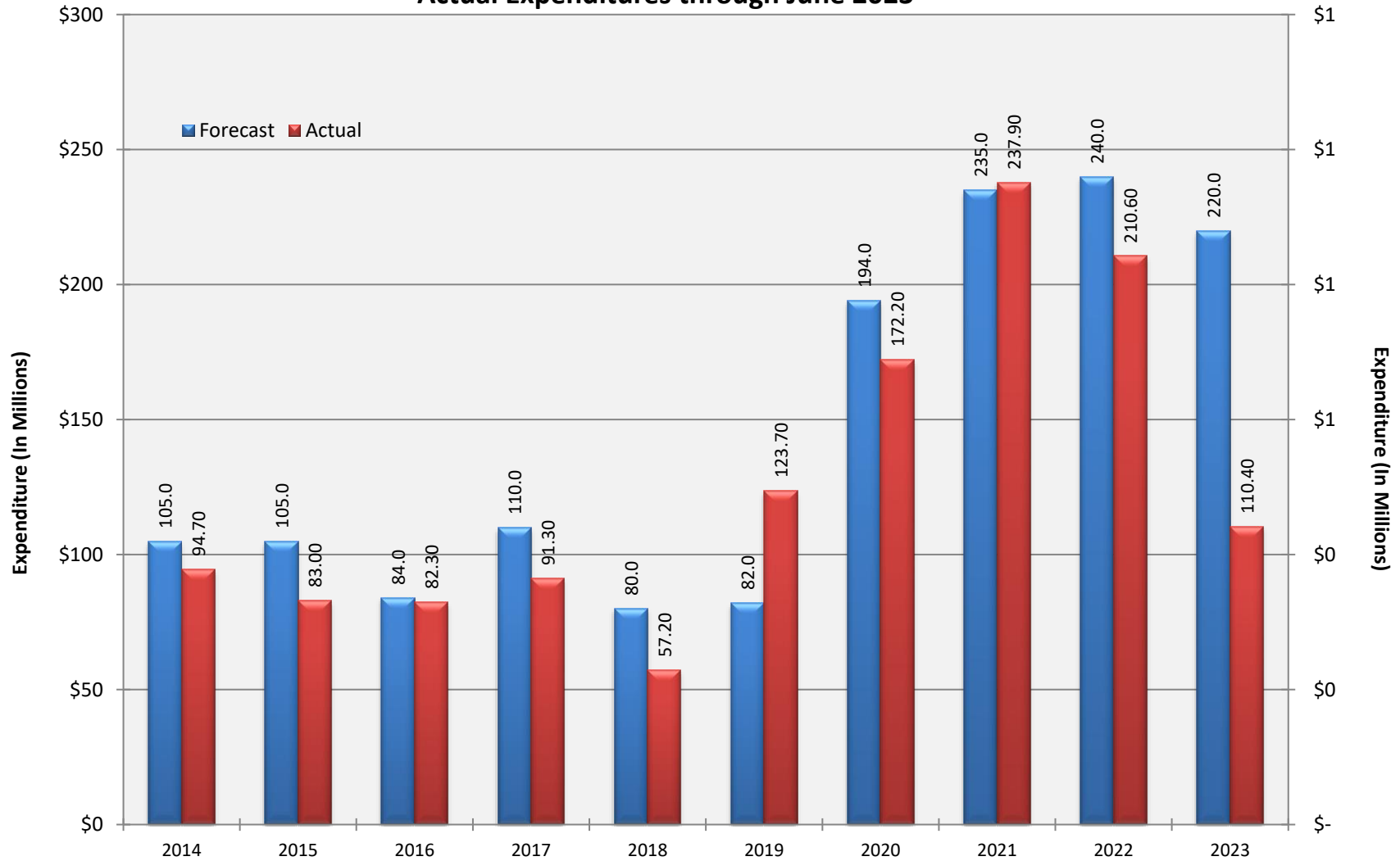
**Charlotte-Mecklenburg Board of Education**  
**Approved Construction or Repair Change Orders\***  
**Reporting Period: June 2023**

<b>Funding Source</b>	<b>Project Name</b>	<b>Contractor</b>	<b>Description</b>	<b>Change Order Amount</b>	<b>Revised Contract Value</b>
2017 Bond	JT Williams (17)	New Atlantic Contracting, Inc.	Firestopping in Building 100; Clear Existing Site Drainage Pipe; Install Batt Insulation at Restroom Ceilings in Bldg 100; Remove Existing VCT at Dining 131; Replace Exhaust Fan in Room; Furnish and Install Phone Line ; Provide and Install Flooring at Stage Alcove; Credit from Charlotte Water for Alternate Installation; ; Reconcile Costs for Cleaning Stage Curtain; Add New Trim & Cylinder for Door 100C; Reconcile unused General Trades Subcontract Allowance and CM Roof Demolition Allowance.	\$87,649.32	\$12,949,239.23
2017 Bond	Shamrock Gardens Elementary School (17)	Rodgers-Holt Brothers III	Door hardware Attic Stock; Recess Stencils.Sink; Hardware and Canopy; Entry Way Cover; Add Card Readers at MDF and IDF Rooms; Apply Field Houses Subcontract Credi; Upgrade Batting Cage; Add Window Blinds at Classrooms and Offices; Add W Roller Shades; Add Pace Clock for Pool; Additional Cameras, including Infrastructure; Add Panic Exit Alarm at Stair; Relocate Door Release and Remove Card Readers at Vestibule; Import Suitable Soil for Segmental Retaining Wall; Relocate Data Jack at Reception; Replace Privacy Door Locksets with 9480; Playground Equipment; Reconcile Existing Site Investigation	(\$28,657.41)	\$11,460,542.84
2017 Bond	West Charlotte High School (17)	RODGERS-HOLT BROTHERS, a Joir	Apply Field Houses Subcontract Credi; Upgrade Batting Cage; Add Window Blinds at Classrooms and Offices; Add W Roller Shades; Add Pace Clock for Pool; Additional Cameras, including Infrastructure; Add Panic Exit Alarm at Stair; Relocate Door Release and Remove Card Readers at Vestibule; Import Suitable Soil for Segmental Retaining Wall; Relocate Data Jack at Reception; Replace Privacy Door Locksets with 9480; Furnish & Install Post Extensions for Baseball & Softball Scoreboard	\$31,702.00	\$88,823,672.00
2017 Bond	E.E. Waddell (17)	Randolph & Son Builders, Inc.	Repair condensate drain; Replace motor on existing fan unit at Prep Room; Remove cabinet in Prep Room; Credit for motors not installed on UV units;; Provide TAB services to investigate and test existing AHU #3 duct system	(\$9,258.57)	\$1,862,837.74

\* Not previously presented to the Board of Education for Approval

# 10 YEAR EXPENDITURE SUMMARY

Forecast Expenditure versus Actual Expenditures through June 2023





# GLOSSARY

# Glossary

---

---

- **Project Management** – This section includes updates from our project managers and describes the currently active construction projects. This includes from Board of Education award thru final completion.
- **Design and Bidding** – This section contains updates from our design managers on the projects currently in the design phase. This phase from design award to Board of Education award of construction.
- **Controls** – Section includes misc. updates from controls group including expenditures, related Board of Education awards during the reporting period, cash flow information. This section covers all projects from approved bond through final expenditures and bond close with the county.
- **MWSBE** – Contains updates from the MWSBE Director and team, including current activity and summaries of the participation by MWSBE providers on our program.
- **Bond Progress Summary** – Provides a summary of bond financials including bond value, committed/pending amounts, paid to date, expended this month.
- **Project Procurement Dates** - Next 90 Days major project bid activity.
- **Mobile Swing Space Utilization** – Includes a summary of program related swing space currently in use and the schedule of use.
- **Bond Summary Schedule** – Current program summary schedule including planned design, construction and FF&E. These activities are fed from detailed schedules and are fine-tuned as project information is available.
- **Project Contractor Teams**; Provides summary of turnover dates for completed/closed projects since 2010 including architects/designers and contractors.
- **School Site Location Maps** – General location of bond projects (2017) by type.
- **Project Status Report** – This section of the report provides a summary of the bond project scope, current estimate (all sources), planned occupancy/actual occupancy date. It also provides a current status of the design phase, construction progress and a brief update. The report currently includes 2013 and 2017 bond projects that have or will be completed after to August 2016.
- **MWSBE Participation Report** – The MWSBE report provides a summary of the participation on the 2013 & 2017 Bond funded projects.
- **Project Progress Photos** – Includes photos of active construction projects.
- **Budget Summary Reports** – These reports are by funding source and summarize financial activity to date on the projects. This includes original and current project estimates, committed values, amounts paid to date, balances and monthly expenditures.
- **Change Orders < \$90,000** – This month's approved construction or repair change orders < \$90,000.
- **Expenditure Summary** – Provides a summary of Bond Expenditures by calendar year.