

Capital Improvement Program

Monthly Bond Report
May 2023



Esperanza Global Academy



CAPITAL PROGRAM SERVICES

Capital Improvement Program

MAY 2023
MONTHLY BOND REPORT

PROGRAM OVERVIEW

- Project Management
- Design and Bidding
- Controls
- MWSBE
- Bond Progress Summary
- Project Procurement - Next 90 Days
- Swing Space Utilization
- Bond Summary Schedule
- Project Contractor Teams; Projects in Design/Construction and Substantially Completed/Closed
- School Site Location Maps
 - Elementary Schools
 - Middle Schools
 - High Schools & Specialty Schools

PROJECT STATUS REPORT

MWSBE PARTICIPATION REPORT

PROJECT PROGRESS PHOTOS

PROJECT CONTROLS

- Budget Summary Reports
 - 2013 Bond Series
 - 2017 Bond Series
- Change Orders < \$90,000
- Expenditure Summary

GLOSSARY

PROGRAM OVERVIEW

PROJECT MANAGEMENT

The following is a summary of the activity on the bond funded projects in construction during the month of May.

The **Bruns Elementary School Replacement** project team completed the grading for the entire building pad along with the removal of the unforeseen tires. The mason completed the below grade masonry in 50% of the building and continued vertical with the walls in the multipurpose/cafeteria building. The electrical and plumbing contractors mobilized and began underground rough-ins. The team continued with the review and approval of the different components of the mock-up panel for quality assurance purposes. The new building is scheduled for occupancy August of 2024.

The **Esperanza Global Academy** (*fka New ES Windsor, Winterfield, idlewild Relief*) construction manager has completed the segmental retaining walls across the site. Curb and gutter is now in place awaiting the finish asphalt paving. Grading work around the building continues. Temporary conditioned air is running throughout the building allowing most finishes to progress. Hard tile is now complete in the student group bathrooms. This new 45-classroom school is currently scheduled for occupancy August 2023.

The construction manager for the **Garinger Addition and Renovation** project has completed commissioning activities for the 300 Building renovations. The replacement glass and glazing components have been received. The contractor is currently fabricating the window systems and is currently scheduled to begin the installation of the replacement systems over summer break. The building was occupied in January 2023.

The **Grove Park Elementary School** (*fka New ES Hidden Valley, JW Grier, Newell*) construction manager continues grading work around the building. Stone base and curb and gutter are nearing completion in advance of asphalt paving scheduled for summer. Building finishes continue throughout by utilizing temporary conditioned air. Charlotte Water has completed the water tap which will release Duke Energy to provide permanent power to the building. The team continues to work through this and supply chain material delivery issues. This new 45-classroom school will be located next to Northridge Middle School and is scheduled for occupancy August 2023.

The construction manager for **JT Williams Secondary Montessori** completed interior renovations for the 100 Building with the exception of the mechanical roof top units that have been impacted by supply chain issues. This, in conjunction with the timing of the required fire-line water taps, will impact the 100 Building occupancy in early summer. The 200 Building renovations are underway including updated staff and student bathrooms. The hard tile for these spaces is being set. Ceiling grid has been installed at classrooms. Electrical contractor has started finish devices in classrooms. Site work including new fire line tie in is scheduled for summer 2023.

The **Lincoln Heights Montessori School** repurpose project renovations continue and have moved into Phase 2. The occupants have moved from the second floor to the first. The general contractor is now focused on the visitor entrance vestibule and main office reception renovations. They are also working on the Montessori life skills lab MEP rough-ins. The building is scheduled for occupancy August 2023.

The **Mountain Island Lake Academy Gym/Classroom Addition** construction manager is continuing with interior finishes and final MEP connections/programming. Marker/tack boards, clocks, blinds, signage, etc. were installed. The construction manager performed their punch list along with their construction clean in preparations for substantial completion the first week of June. Due to the delay of the roof top HVAC unit a temporary unit has been installed to maintain conditioned space. The new building is scheduled for occupancy August 2023.

The **New Elementary School (Elon, Hawk Ridge, Polo Relief)** construction manager continued to manage multiple trades on the project. The mason continued installations on the building and recreation center. The steel erector continued installations and the MEP trades continued with above ceiling installations. The metal stud contractor

continued with installation of the exterior and interior studs throughout the building. The spray foam contractor continued installation on the multi-purpose building. The new 45-classroom elementary school is located across from the Ardrey Kell High School and is scheduled for occupancy August 2024.

The **New High School (South, Ardrey Relief)** construction manager continued with masonry installations, erection of structural steel and placement of upper floor slabs. The mason continues with the installation of interior CMU walls and below grade masonry at the out buildings. Site work is ongoing including underground detention, sanitary, storm installations and retaining walls throughout the site. Mechanical, electrical and plumbing contractors began above ceiling rough-ins along with interior stud installation beginning. Work began on the concrete retaining wall at the bottomless culvert and the stream crossings continue into next month. The new 100-classroom relief high school is scheduled for occupancy August 2024.

The **West Charlotte High School** construction manager continues to work on the Phase 2 (demolition/site work). The baseball and softball fields are on grade with Bermuda grass sprigging to follow shortly. Athletic outbuildings to support these sports are progressing. Hardscapes including parking lots and sidewalks are progressing. Front entrance plaza concrete flatwork has also started. Athletic field sports lights are now complete. The team continues to coordinate the project with school administration. The demolition and site work phase are scheduled for completion in August 2023.

DESIGN AND BIDDING

The following is a summary of the activity on the bond funded projects in design and bidding phase during the month of May.

The **Northwest School of the Arts** project has progressed to construction documents for Phase 1 and continues to progress in the design development stage for Phase 2. The Phase 1 design scope includes the underground storm water detention system and new car parking lot in preparation for Phase 2. Phase 2 scope includes a new administration, visual/performing arts building and other campus renovations. The car parking modifications are scheduled to begin late in the summer of 2023.

The **South Mecklenburg High School Addition** project continues to progress in the procurement phase for scopes of work requiring long lead equipment and associated labor. The project consists of a 3-story classroom addition providing 19 classrooms that support the CTE program, visual arts and the JROTC program. Mobiles will be relocated the summer 2023 to allow construction of the new building to begin in the fall of 2023 and be available for occupancy January 2025.

CONTROLS

Expenditures for the month of May were \$25M. This brings our fiscal year to date total to \$187.9M against the 2023 fiscal year cash flow projection of \$200M. The Controls team continues the reconciliation and closeout of completed 2013 and 2017 bond projects. Completed purchase orders are being closed out. Available funding identified from completed purchase orders are being accumulated to be used for future capital needs.

The Controls team continues to submit notices of potential changes at school sites so senior staff can adequately evaluate any issues. Additionally, the Controls team continues the processing of contracts, invoices, preparing notices of potential change, change orders, pay applications, and check requests for projects under construction. Captured construction cost data is used to prepare financial reports such as detailed cost reports, budget summaries, reconciliation to CMS books, revisions to and updated cash flows and complete special financial requests by CMS

and Mecklenburg County. This process, along with data compilation and management, allows senior staff to provide the proper guidance/direction and accurate information to the program stakeholders.

No Bond related consent items were submitted for Board of Education approval during the month of May.

MWSBE

As of May 2023, the overall MWSBE utilization percentage related to design and construction of the 2017 bond projects is 46.07% which includes 19.42% participation by minority contractors, 25.05% by women contractors and 1.60% participation by small business contractors. This accounts for more than \$389 million of utilization by Minority, Women and Small Business Contractors.

The Diversity & Inclusion Office of Charlotte-Mecklenburg Schools continued to conduct several individual virtual orientations with new MWSBE contractors and prime contractors. In addition, team members also attended/hosted the following outreach sessions/pre-bid meetings and/or workforce development opportunities:

Outreach Sessions:

- Crowns of Enterprise Awards
- Carolinas-Virginia Minority Supplier Development Council Center for Excellence
- Bank of America: The Power of the Hispanic- Latino GDP in the Carolinas
- Women’s Business Center of Charlotte B.O.S.S. Conference
- Mecklenburg County Business Launch Pad Graduation
- Metrolina RING Meeting
- Charlotte MED Week 2023 Planning

Commendation:

- Congratulations to the following Crowns of Enterprise Award Honorees: Marand Builders Inc. – Minority Business of the Year, Platinum Coating Pink Inc. – Women Business of the Year, Zaja PR, LLC – Small Business of the Year, Humanity Communications Collective Corp. – Prime Contractor of the Year, Bryan Delany – Diversity Advocate of the Year, Alma HVAC, Inc. – Rising Star Award and Kristen Miranda from WBTV – Media Advocate of the Year. Award winners were selected for sound business strategies while driving economic development in the Charlotte-Mecklenburg region.

Over the next month, team members will continue to work with contractors interested in bidding on the upcoming school projects utilizing various virtual tools to communicate. Contractors are encouraged to review bid advertisements in Charlotte Observer and register as a vendor on the North Carolina Interactive Purchasing System for notification of the various opportunities.

BOND PROGRESS SUMMARY As of May 2023

Funding Source and Value		Amount Committed/Pending	Amount Paid to Date	Amount Expended This Period
'13 Bond	\$316,067,527	\$314,489,827	\$314,251,506	\$1,198
'17 Bond	\$1,018,618,062	\$966,006,898	\$750,251,549	\$24,966,104
Grand Total	\$1,334,685,589	\$1,280,496,725	\$1,064,503,055	\$24,967,302

UPCOMING MAJOR CONSTRUCTION PROCUREMENT DATES *Three Month Look Ahead*

School Name

Bid Dates*

Northwest School of the Arts Phase I
Managed by CM (Balfour Beatty)

June 2023

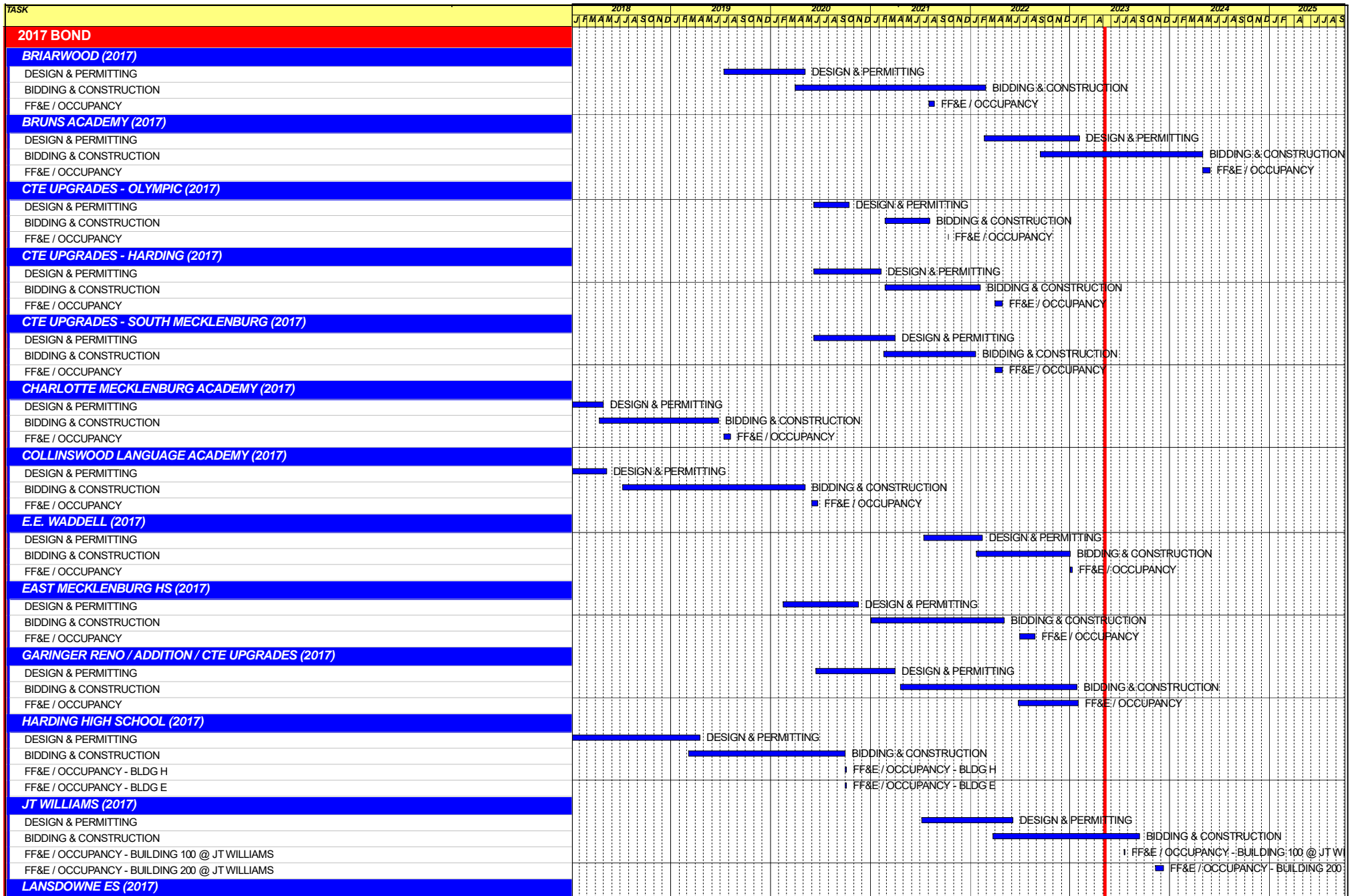
** NOTE: Work In Progress...Dates Subject to Change.*

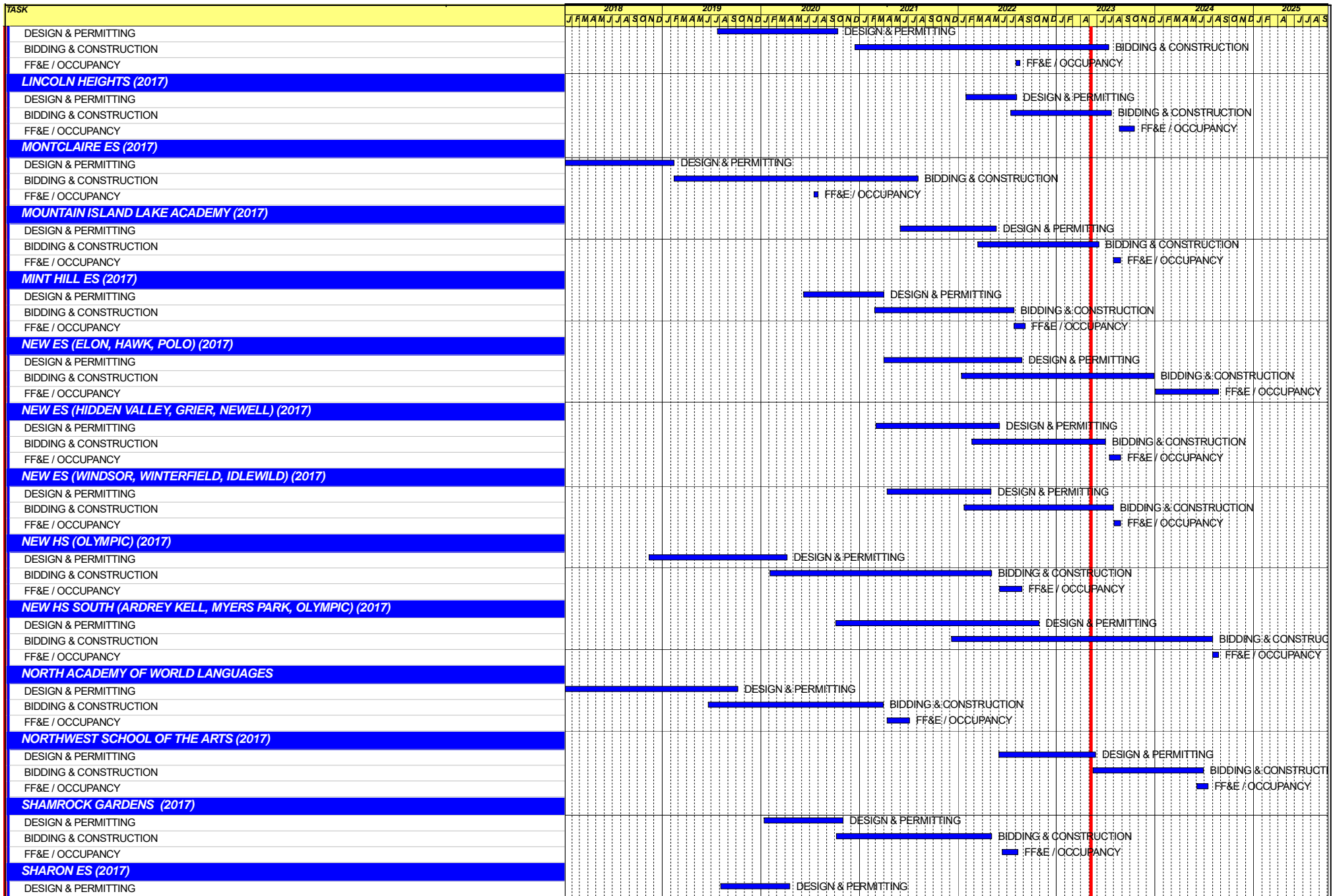
SWING SPACE UTILIZATION

Creating a temporary space for students and staff to occupy during construction on a school’s campus has proven to be beneficial to the project’s schedule and cost and overall safety and efficiency of school operations. When the renovation or expansion of a facility is performed and the facility must remain functionally operational, there are benefits to the owner in using swing space.

We have successfully utilized both onsite and offsite swings. The most desirable swings are “offsite” ones. Onsite swing using mobiles or modulars, likewise has been successfully used. The following is a summary of current swing options planned or in use.

<u>School</u>	<u>No. of Mobiles/Relocation Site</u>	<u>Status (From – To)</u>
J.T. Williams	10-classroom modular	March 2023 – TBD





Capital Improvements Program
Projects in Design or Under Construction

School	Architect	General Contractor/CM
Projects In Design		
Northwest School of the Arts Addition (17)	LS3P	Balfour Beatty
South Mecklenburg High School Addition (17)	Morris Berg	Balfour Beatty
Projects in Bid/Award/Construction Phase		
New Bruns Avenue ES (17)	ADW	Edifice, Inc.
J.T. Williams (17)	FWA	New Atlantic
Lansdowne Elementary School Replacement (17)	Perkins Eastman	Edifice, Inc.
Lincoln Heights Repurpose (17)	Neighboring Concepts	Randolph & Sons
Mountain Island School (17)	ADW	Whiting-Turner
New ES (Elon,Hawk Ridge, Polo Ridge) (17)	Little Diversified	Balfour Beatty
New ES (Hidden Valley, JW Grier, Newell) (17)	ADW	Edifice, Inc.
New ES (Windsor, Winterfield, Idlewild) (17)	Neighboring Concepts	Rodgers-Holt Brothers
New HS (South, Ardrey) (17)	Ratio	Messer
West Charlotte High School (17)	LS3P	Rodgers-Holt Brothers

Capital Improvements Program
Projects Substantially Completed/Closed *

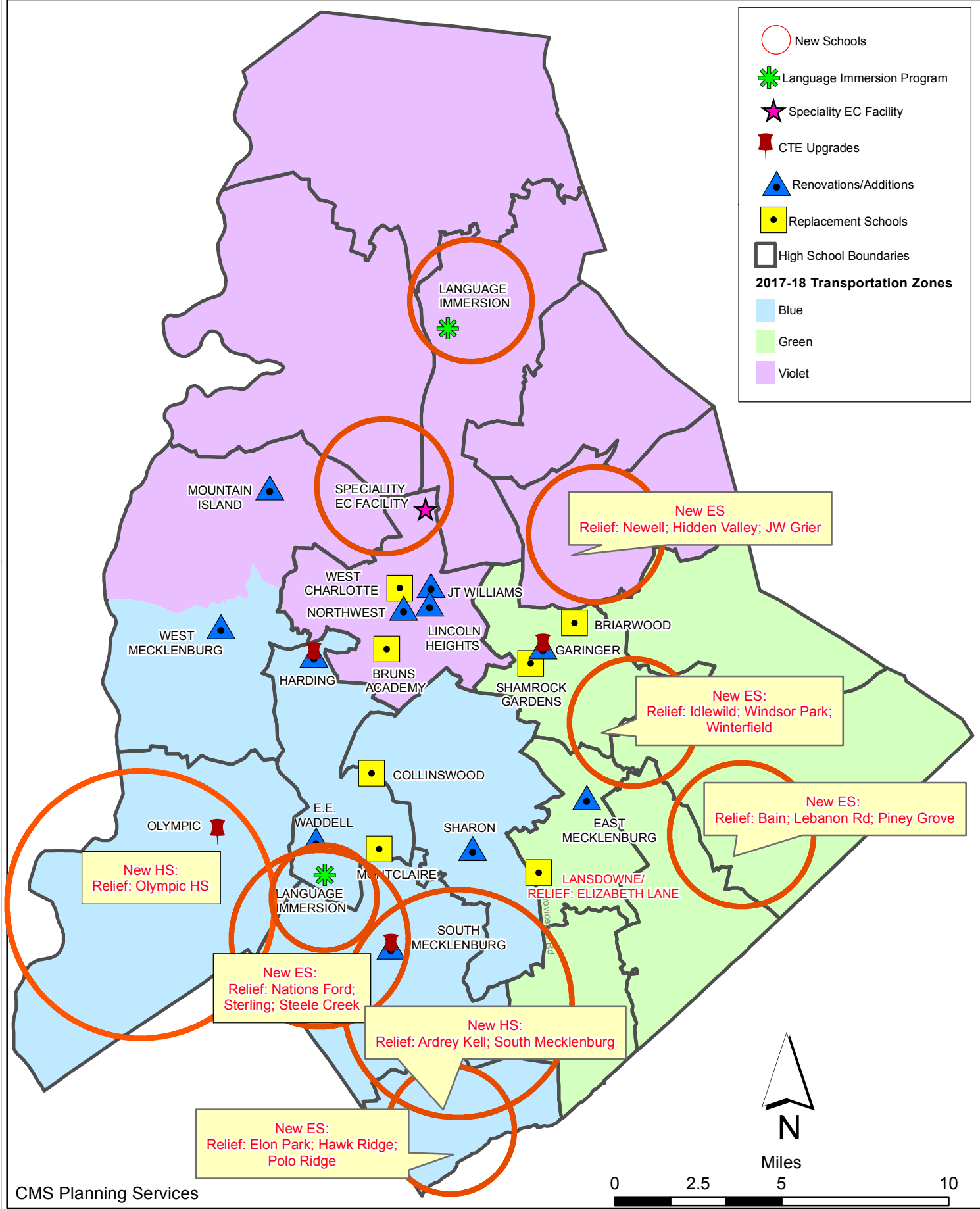
School	Turnover Year	Architect	General Contractor
E.E. Waddell (17)	Jan-23	Moseley	Randolph & Sons Builders
Garinger Addition/Renovation & CTE (17)	Jan-23	LS3P	Balfour Beatty
Palisades High School (Olympic Relief) (17)	Aug-22	Little Diversified	Edifice, Inc.
Shamrock Gardens Elementary School Replacement (17)	Aug-22	Little Diversified	Rodgers/Holt Brothers
Mint Hill ES (17) (fka Bain, Lebanon Rd, Piney Grove)	Aug-22	FWA	Metcon
East Mecklenburg High School (17)	May-22	Morris Berg	Turner Construction
CTE (Harding, Olympic, South) (17)	Jan-22	MPS	Branch Brownstone
Briarwood Elementary School Replacement (17)	Aug-21	ADW	New Atlantic Contracting
Montclair Elementary School (17)	Aug-21	WHN	Messer Construction
North Academy of World Languages (17)	Aug-21	ADW	New Atlantic Contracting
Sharon Elementary School (17)	Aug-21	Clark Nexsen	Samet
South Academy of International Languages (17)	Aug-21	FWA	Messer Construction
South Pine Academy (17)	Aug-21	FWA	Metcon
West Mecklenburg Gym (17)	Aug-21	Moseley	Barnhill/D.A. Everett
Collinswood Language Academy (17)	Aug-20	Perkins Eastman	Turner Construction
Harding High School Renovation (17)	Aug-20	SFLA	Barnhill Contracting
Rea Farms STEAM Academy (13)	Aug-20	Little Diversified	Balfour Beatty
Ashley Park K-8 Conversion (13)	Aug-19	ADW	Turner Construction
Druid Hills K-8 Conversion (13)	Aug-19	ADW	Edifice, Inc.
Selwyn Elementary (13)	Aug-19	Clark Nexsen	Balfour Beatty
Charlotte Mecklenburg Academy (17)	Aug-19	KSQ	Edifice, Inc.
Davidson K-8 (13)	Aug-19	Little Diversified	Gilbane
CTE - North Mecklenburg High (13)	Aug-19	LS3P	Shiel Sexton
CTE - Garinger (13)	Mar-19	LS3P	Hostetter & Son
CTE - Independence (13)	Mar-19	LS3P	D.E. Brown
CTE - West Mecklenburg (13)	Mar-19	LS3P	Hostetter & Son
Charlotte East Language Academy (13)	Aug-18	Morris Berg	Edifice, Inc
Myers Park High School Phase 3 (13)	Aug-18	Boomerang Design	BE&K
Northridge Middle (13)	Aug-18	Morris Berg	Barnhill Contracting
Myers Park High Bldg 2 (13)	Feb-18	Boomerang Design	BE&K
East Mecklenburg High Addition (13)	Jan-18	Bergman (fna Gantt Huberman)	Edifice, Inc.
J.M. Alexander Middle (13)	Aug-17	FWA Group	Balfour Beatty
Northwest School of the Arts Renovation (13)	Aug-17	Moseley	Turner Construction
Renaissance West STEAM Academy (13)	Aug-17	Little Diversified	Rodgers Construction
South Mecklenburg High Addition (13)	Jul-17	SFLA	Barnhill Contracting
Myers Park High Bldg 1 (13)	Sep-16	Boomerang	KBR
Statesville Road Elementary (13)	Aug-16	ADW	JE Dunn
Nations Ford Elementary (13)	Aug-16	Wash Hatem Nelson	Messer Construction
Olympic High Addition (13)	Aug-16	McMillan, Pazdan, Smith	Turner Construction
Lawrence Orr Elementary (07)	Aug-15	Cort Architecural Group	DH Griffin/Metcon
Parkside Elementary (07)	Aug-15	Wash Hatem Nelson	Clancy & Theys
Hawthorne High Renovations (07)	Aug-15	Morris-Berg	Balfour Beatty
Newell Elementary (07)	Aug-15	Perkins Eastman	New Atlantic Contracting
Ranson Middle (07)	Aug-15	Morris-Berg	Edifice, Inc.
Vance High	Jan-15	LS3P	Matthews Construction Co., Inc.
Garinger High - Renovations/Addition	Aug-14	Adams Group Architects	Turner Construction
Olympic High - Stadium	Aug-14	Site Solutions	Turner Construction
West Mecklenburg High - Stadium	Aug-14	Site Solutions	Turner Construction
Collinswood - Indoor Air Quality	Aug-14	PEA	The Bowers Group
Lansdowne - Indoor Air Quality	Aug-14	AeroRaq	Tyler 2
McKee Road - Indoor Air Quality	Aug-14	McCracken & Lopez	Godfrey Construction
Garinger High - Track & Field	Jul-14	Site Solutions	Turner Construction
Independence High - Gym	Jun-14	Shook Kelly	Shelco, Inc. (CM)
Palisades Park Elementary	May-14	Wash Hatem Nelson	Clancy & Theys

Capital Improvements Program
Projects Substantially Completed/Closed *

School	Turnover Year	Architect	General Contractor
East Mecklenburg High Auditorium	Jan-14	Gantt Huberman Associates	Godfrey Construction Co., Inc.

Projects closed prior to 2014 are not shown

CMS Capital Improvement Plan 2017 Bond Projects



PROJECT STATUS REPORT



Monthly Project Status 2017 Bond Summary May 2023

Project	Current Project Estimate	Project Scope	** Occupy On	Design Phase	Construction Progress	Project Status
Briarwood Elementary School (17)	\$ 31,243,066	45-classroom replacement facility; replaces school built in 1956.	August 2021	Complete	100 %	Project is complete.
Bruns Avenue Elementary School (17)	\$ 48,890,679	New 45-classroom elementary school (K-5); replaces old school built in 1969.	August 2024	Complete	5 %	The Bruns Elementary School Replacement project team completed the grading for the entire building pad along with the removal of the unforeseen tires. The mason completed the below grade masonry in 50% of the building and continued vertical with the walls in the multipurpose/cafeteria building. The electrical and plumbing contractors mobilized and began underground rough-ins. The team continued with the review and approval of the different components of the mock-up panel for quality assurance purposes.
Career and Technology Education (17)	\$ 9,659,765	Phase I CTE upgrades at Olympic, Harding, Garinger and South Mecklenburg.	January 2022	Complete	100 %	Project is complete.
Charlotte-Mecklenburg Academy (17)	\$ 17,699,220	New EC school located on the old Statesville Elementary School site.	August 2019	Complete	100 %	Project is complete.
Collinswood Language Academy (17)	\$ 41,412,015	New 63-classroom K-8 facility on the site of the Smith Family Center.	August 2020	Complete	100 %	Project is complete.
E.E. Waddell (17)	\$ 5,137,367	Repurpose current E.E. Waddell to reopen as a magnet high school.	August 2023	Complete	99 %	Project is complete.
East Mecklenburg High School (17)	\$ 10,231,911	This project will provide for the design, and construction of a new 30 classroom building.	August 2022	Complete	99 %	Project is complete.

Monthly Project Status

2017 Bond Summary

May 2023

Project	Current Project Estimate	Project Scope	** Occupy On	Design Phase	Construction Progress	Project Status
Esperanza Global Academy	\$ 45,855,770	New 45-classroom elementary school to relieve Windsor, Winterfield, and Idlewild ES.	August 2023	Complete	71 %	The Esperanza Global Academy (fka New ES Windsor, Winterfield, Idlewild Relief) construction manager has completed the segmental retaining walls across the site. Curb and gutter is now in place awaiting the finish asphalt paving. Grading work around the building continues. Temporary conditioned air is running throughout the building allowing most finishes to progress. Hard tile is now complete in the student group bathrooms.
Garinger High School (17)	\$ 5,236,979	Project includes the design and construction for renovations of 300 building and a new 16 classroom building.	January 2023	Complete	98 %	The construction manager for the Garinger Addition and Renovation project has completed commissioning activities for the 300 Building renovations. The replacement glass and glazing components have been received. The contractor is currently fabricating the window systems and is currently scheduled to begin the installation of the replacement systems over summer break.
Grove Park Elementary School	\$ 44,079,387	New 45-classroom elementary school; relieves overcrowding at Hidden Valley, J.W. Grier, Newell.	August 2023	Complete	75 %	The Grove Park Elementary School fka New ES Hidden Valley, JW Grier, Newell) construction manager continues grading work around the building. Stone base and curb and gutter are nearing completion in advance of asphalt paving scheduled for summer. Building finishes continue throughout by utilizing temporary conditioned air. Charlotte Water has completed the water tap which will release Duke Energy to provide permanent power to the building. The team continues to work through this and supply chain material delivery issues.
Harding High School (17)	\$ 13,747,878	Renovation of the kitchen, cafeteria, existing gym (aux) and the addition of a new gym.	August 2020	Complete	100 %	Project is complete.

Monthly Project Status

2017 Bond Summary

May 2023

Project	Current Project Estimate	Project Scope	** Occupy On	Design Phase	Construction Progress	Project Status
JT Williams (17)	\$ 17,032,600	Project includes building renovations to J.T. Williams Montessori magnet.	August 2024	Complete	68 %	The construction manager for JT Williams Secondary Montessori completed interior renovations for the 100 Building with the exception of the mechanical roof top units that have been impacted by supply chain issues. This, in conjunction with the timing of the required fire-line water taps, will impact the 100 Building occupancy in early summer. The 200 Building renovations are underway including updated staff and student bathrooms. The hard tile for these spaces is being set. Ceiling grid has been installed at classrooms. Electrical contractor has started finish devices in classrooms. Site work including new fire line tie in is scheduled for summer 2023.
Lansdowne Elementary School (17)	\$ 33,804,188	New 45-classroom school; replaces old school built in 1959 and relieve crowding at Elizabeth Lane ES.	August 2022	Complete	97 %	The Lansdowne Elementary School playfield has been seeded and straw installed. The site contractor continues to work on stabilizing the site. Erosion control perimeter silt fence remains as grassing progresses. The new playgrounds have been installed and opened for students. The site work will be substantially completed in April.
Lincoln Heights Elementary School (17)	\$ 4,588,675	Repurpose and reopen as magnet school.	August 2023	Complete	63 %	The Lincoln Heights Montessori School repurpose project renovations continue and have moved into Phase 2. The occupants have moved from the second floor to the first. The general contractor is now focused on the visitor entrance vestibule and main office reception renovations. They are also working on the Montessori life skills lab MEP rough-ins.
Mint Hill Elementary School (17)	\$ 29,671,526	New 45-classroom elementary school; relieves crowding at Bain, Lebanon Road, Piney Grove.	August 2022	Complete	99 %	The Mint Hill Elementary School project has moved into the closeout phase. The new signal at the entrance to the schools is currently scheduled to occur spring/summer 2023.
Montclair Elementary School (17)	\$ 28,200,634	New 45-classroom replacement facility replacing school built in 1958.	August 2020	Complete	100 %	Project is complete.

Monthly Project Status

2017 Bond Summary

May 2023

Project	Current Project Estimate	Project Scope	** Occupy On	Design Phase	Construction Progress	Project Status
Mountain Island Lake Academy (17)	\$ 13,239,686	K-8 Phase 2 - New gymnasium and specialty classrooms.	August 2023	Complete	74 %	The Mountain Island Lake Academy Gym/Classroom Addition construction manager is continuing with interior finishes and final MEP connections/programing. Marker/tack boards, clocks, blinds, signage, etc. were installed. The construction manager performed their punch list along with their construction clean in preparations for substantial completion the first week of June. Due to the delay of the roof top HVAC unit a temporary unit has been installed to maintain conditioned space.
New Elementary School (Elon, Hawk Ridge, Polo Relief) (17)	\$ 60,641,760	New 45-classroom elementary school to relieve Elon, Hawk Ridge, Polo.	August 2024	Complete	35 %	The New Elementary School (Elon, Hawk Ridge, Polo Relief) construction manager continued to manage multiple trades on the project. The mason continued installations on the building and recreation center. The steel erector continued installations and the MEP trades continued with above ceiling installations. The metal stud contractor continued with installation of the exterior and interior studs throughout the building. The spray foam contractor began installation on the multi-purpose building.
New High School (South, Ardrey) (17)	\$ 146,286,358	New 100 classroom high school to relieve South Mecklenburg, Ardrey Kell and Myers Park HS.	August 2024	Complete	37 %	The New High School (South, Ardrey Relief) construction manager continued with masonry installations, erection of structural steel and placement of upper floor slabs. The mason continues with the installation of interior CMU walls and below grade masonry at the out buildings. Site work is ongoing including underground detention, sanitary, storm installations and retaining walls throughout the site. Mechanical, electrical and plumbing contractors began above ceiling rough-ins along with interior stud installation beginning. Work began on the concrete retaining wall at the bottomless culvert and the stream crossings continue into next month.
North Academy of World Languages (17)	\$ 41,739,951	New 66 classroom K-8 Language Immersion facility located on the old J.M. Alexander Middle School site.	August 2021	Complete	100 %	Project is complete.

Monthly Project Status

2017 Bond Summary

May 2023

Project	Current Project Estimate	Project Scope	** Occupy On	Design Phase	Construction Progress	Project Status
Northwest School of the Arts (17)	\$ 12,167,000	Replace classroom buildings B&D and build classroom addition that supports program. 1st phase includes parking and U/G stormwater.	January 2025	Construction Documents	0 %	The Northwest School of the Arts project has progressed to construction documents for Phase 1 and continues to progress in the design development stage for Phase 2. The Phase 1 design scope includes the underground storm water detention system and new car parking lot in preparation for Phase 2. Phase 2 scope includes a new administration, visual/performing arts building and other campus renovations. The car parking modifications are scheduled to begin late in the summer of 2023.
Palisades High School (17)	\$ 107,592,534	New 100 classroom high school; relieves crowding at Olympic High School.	August 2022	Complete	99 %	The Palisades High School (fka New High School Olympic Relief) has been occupied by staff and students. The construction manager is in the closeout phase and is working with trade contractors to complete punch list and open issues.
Shamrock Gardens Elementary School (17)	\$ 30,784,692	New 45-classroom replacement facility.	August 2022	Complete	100 %	Project is complete.
Sharon Elementary School (17)	\$ 9,125,862	Add 16 classroom building and increase capacity of cafeteria.	August 2021	Complete	100 %	Project is complete.
South Academy of International Languages (fka New K-8 School (South) (17)	\$ 40,669,909	New 71 classroom K-8 Language Immersion facility located on the old Nations Ford Elementary School site.	August 2021	Complete	100 %	Project is complete.
South Mecklenburg High School (17)	\$ 15,622,927	Renovate/replace two classroom buildings built in 1958 to upgrade learning conditions.	January 2025	Construction Documents	0 %	The South Mecklenburg High School Addition project continues to progress in the procurement phase for scopes of work requiring long lead equipment and associated labor. The project consists of a 3-story classroom addition providing 19 classrooms that support the CTE program, visual arts and the JROTC program. Mobiles will be relocated the summer 2023 to allow construction of the new building to begin in the fall of 2023 and be available for occupancy January 2025.
South Pine Academy (17)	\$ 30,438,977	New 45-classroom elementary school to relieve Nations Ford, Sterling, and Steele Creek.	August 2021	Complete	100 %	Project is complete.

Monthly Project Status

2017 Bond Summary

May 2023

Project	Current Project Estimate	Project Scope	** Occupy On	Design Phase	Construction Progress	Project Status
West Charlotte High School (17)	\$ 104,413,163	New 100 classroom school to replace current facility built in 1954.	August 2022	Complete	94 %	The West Charlotte High School construction manager continues to work on the Phase 2 (demolition/site work). The baseball and softball fields are on grade with Bermuda grass sprigging to follow shortly. Athletic outbuildings to support these sports are progressing. Hardscapes including parking lots and sidewalks are progressing. Front entrance plaza concrete flatwork has also started. Athletic field sports lights are now complete. The team continues to coordinate the project with school administration.
West Mecklenburg High School (17)	\$ 6,259,479	Provide new gymnasium, the existing gymnasium will become the auxilliary.	August 2021	Complete	100 %	Project is complete.

MWSBE PARTICIPATION REPORT

Contract Status Report - MWSBE Participation Commitments

Report Date 6/12/2023

Charlotte-Mecklenburg Schools

6/12/2023 4:25:26 PM

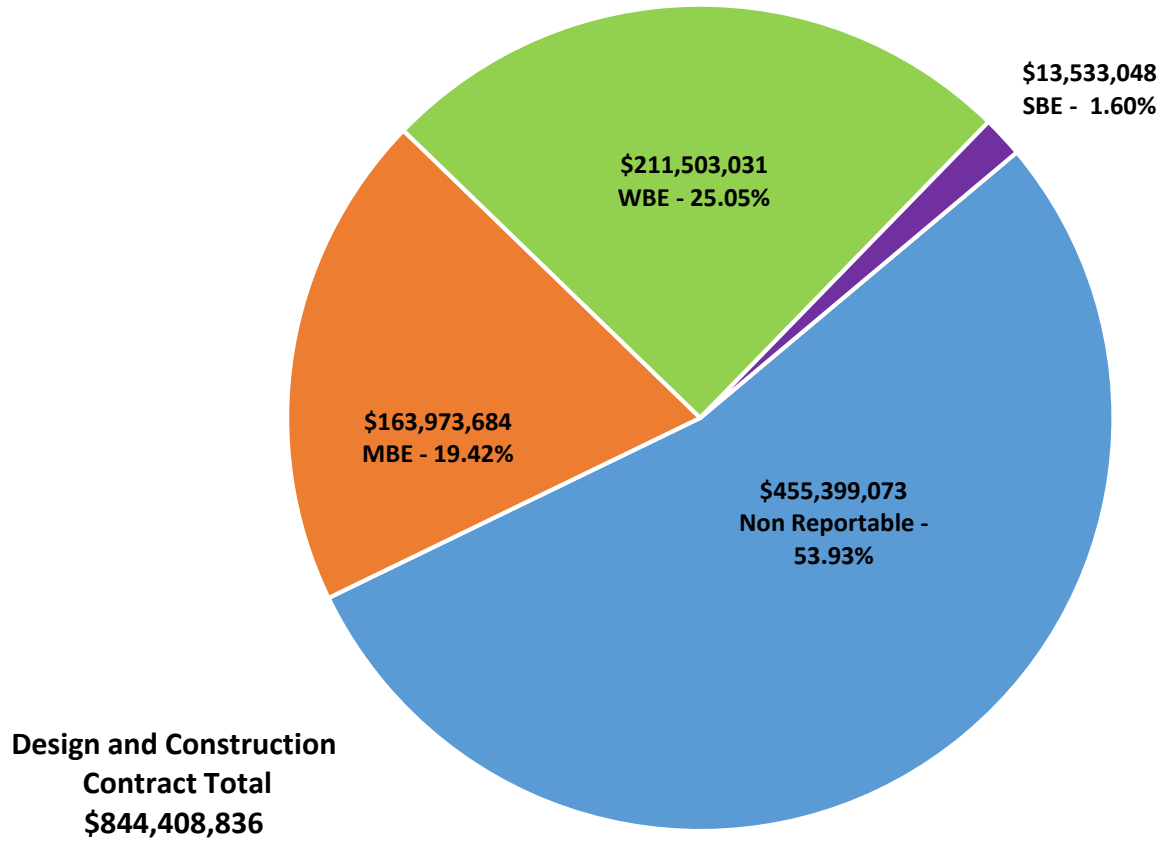
2017 Bond Projects

May 2023 Monthly Bond Report

Facility	Contract Amount	African American MBE\$	%	Other MBE \$	%	Total MBE \$	%	Other WBE \$	%	Other SBE \$	%	Total	%
<u>Briarwood Elementary School (17)</u>	\$28,413,151	\$4,075,384	14.34%	\$2,135,619	7.52%	\$6,211,003	21.86%	\$2,187,249	7.70%	\$187,102	0.66%	\$8,585,354	30.22%
<u>Career and Technology Education (17)</u>	\$5,594,345	\$522,870	9.35%	\$315,278	5.64%	\$838,148	14.98%	\$203,576	3.64%	\$65,475	1.17%	\$1,107,199	19.79%
<u>Charlotte-Mecklenburg Academy (17)</u>	\$17,035,852	\$198,536	1.17%	\$1,029,192	6.04%	\$1,227,728	7.21%	\$928,554	5.45%	\$13,200	0.08%	\$2,169,482	12.73%
<u>Collinswood Language Academy (17)</u>	\$38,527,704	\$649,287	1.69%	\$1,613,103	4.19%	\$2,262,390	5.87%	\$11,363,566	29.49%	\$8,328	0.02%	\$13,634,284	35.39%
<u>E.E. Waddell (17)</u>	\$2,140,532	\$0	0.00%	\$0	0.00%	\$0	0.00%	\$58,690	2.74%	\$0	0.00%	\$58,690	2.74%
<u>East Mecklenburg High School (17)</u>	\$12,642,198	\$603,811	4.78%	\$532,460	4.21%	\$1,136,271	8.99%	\$490,382	3.88%	\$681,075	5.39%	\$2,307,728	18.25%
<u>Esperanza Global Academy</u>	\$41,224,686	\$8,321,265	20.19%	\$4,417,406	10.72%	\$12,738,671	30.90%	\$26,675,311	64.71%	\$7,440	0.02%	\$39,421,422	95.63%
<u>Garinger High School (17)</u>	\$4,316,206	\$407,299	9.44%	\$1,452,056	33.64%	\$1,859,355	43.08%	\$913,472	21.16%	\$270,990	6.28%	\$3,043,818	70.52%
<u>Grove Park Elementary School</u>	\$38,660,600	\$5,493,635	14.21%	\$4,211,754	10.89%	\$9,705,389	25.10%	\$2,237,544	5.79%	\$25,600	0.07%	\$11,968,533	30.96%
<u>Harding High School (17)</u>	\$13,015,986	\$1,504,505	11.56%	\$310,356	2.38%	\$1,814,862	13.94%	\$4,010,831	30.81%	\$176	0.00%	\$5,825,869	44.76%
<u>JT Williams (17)</u>	\$15,509,768	\$973,801	6.28%	\$343,427	2.21%	\$1,317,228	8.49%	\$3,638,716	23.46%	\$51,800	0.33%	\$5,007,745	32.29%
<u>Lansdowne Elementary School (17)</u>	\$30,775,402	\$2,631,555	8.55%	\$793,183	2.58%	\$3,424,738	11.13%	\$2,213,177	7.19%	\$223,625	0.73%	\$5,861,539	19.05%
<u>Lincoln Heights Elementary School (17)</u>	\$2,693,087	\$102,289	3.80%	\$18,800	0.70%	\$121,089	4.50%	\$56,330	2.09%	\$74,503	2.77%	\$251,922	9.35%
<u>Mint Hill Elementary School (17)</u>	\$25,973,008	\$5,223,675	20.11%	\$18,069,957	69.57%	\$23,293,632	89.68%	\$1,201,089	4.62%	\$308,370	1.19%	\$24,803,091	95.50%
<u>Montclair Elementary School (17)</u>	\$26,093,784	\$3,617,952	13.87%	\$2,260,381	8.66%	\$5,878,333	22.53%	\$5,754,566	22.05%	\$493,707	1.89%	\$12,126,605	46.47%
<u>Mountain Island Lake Academy (17)</u>	\$12,514,576	\$171,533	1.37%	\$779,166	6.23%	\$950,699	7.60%	\$918,248	7.34%	\$30,300	0.24%	\$1,899,247	15.18%
<u>New Elementary School (Elon, Hawk)</u>	\$45,539,599	\$5,793,101	12.72%	\$1,016,850	2.23%	\$6,809,951	14.95%	\$8,527,827	18.73%	\$1,299,553	2.85%	\$16,637,331	36.53%
<u>New High School (South, Ardrey) (17)</u>	\$132,951,739	\$2,642,133	1.99%	\$5,148,531	3.87%	\$7,790,664	5.86%	\$12,997,901	9.78%	\$4,294,119	3.23%	\$25,082,683	18.87%
<u>North Academy of World Languages (17)</u>	\$38,090,783	\$1,688,775	4.43%	\$1,575,863	4.14%	\$3,264,638	8.57%	\$3,472,318	9.12%	\$436,793	1.15%	\$7,173,748	18.83%
<u>Northwest School of the Arts (17)</u>	\$3,698,499	\$0	0.00%	\$37,000	1.00%	\$37,000	1.00%	\$27,850	0.75%	\$0	0.00%	\$64,850	1.75%
<u>Palisades High School (17)</u>	\$98,070,130	\$13,504,638	13.77%	\$7,587,760	7.74%	\$21,092,398	21.51%	\$13,786,630	14.06%	\$2,996,568	3.06%	\$37,875,596	38.62%
<u>Shamrock Gardens Elementary School (17)</u>	\$27,189,620	\$2,366,885	8.71%	\$1,472,922	5.42%	\$3,839,807	14.12%	\$23,207,193	85.35%	\$274,496	1.01%	\$27,321,497	100.49%
<u>Sharon Elementary School (17)</u>	\$8,534,491	\$326,844	3.83%	\$283,497	3.32%	\$610,341	7.15%	\$926,873	10.86%	\$217,984	2.55%	\$1,755,197	20.57%
<u>South Academy of International Languages (17)</u>	\$37,073,557	\$6,023,141	16.25%	\$2,431,071	6.56%	\$8,454,212	22.80%	\$10,945,346	29.52%	\$313,999	0.85%	\$19,713,557	53.17%

Facility	Contract Amount	African American MBE\$	%	Other MBE \$	%	Total MBE \$	%	Other WBE \$	%	Other SBE \$	%	Total	%
<u>South Mecklenburg High School (17)</u>	\$6,997,682	\$0	0.00%	\$0	0.00%	\$0	0.00%	\$0	0.00%	\$0	0.00%	\$0	0.00%
<u>South Pine Academy (17)</u>	\$26,112,608	\$916,165	3.51%	\$19,205,893	73.55%	\$20,122,058	77.06%	\$4,342,256	16.63%	\$237,754	0.91%	\$24,702,068	94.60%
<u>West Charlotte High School (17)</u>	\$95,209,851	\$14,362,353	15.08%	\$4,017,514	4.22%	\$18,379,867	19.30%	\$68,353,784	71.79%	\$736,317	0.77%	\$87,469,968	91.87%
<u>West Mecklenburg High School (17)</u>	\$9,809,391	\$283,809	2.89%	\$509,403	5.19%	\$793,212	8.09%	\$2,063,752	21.04%	\$283,775	2.89%	\$3,140,739	32.02%
Grandtotal	\$844,408,836	\$82,405,242	9.76%	\$81,568,442	9.66%	\$163,973,684	19.42%	\$211,503,031	25.05%	\$13,533,048	1.60%	\$389,009,763	46.07%

MWSBE Participation 2017 Bond Projects



MONTHLY PROJECT PHOTOS



New ES Elon Park, Hawk Ridge, Polo Ridge



New ES Elon Park, Hawk Ridge, Polo Ridge

PROJECT PROGRESS PHOTOS



New ES Elon Park, Hawk Ridge, Polo Ridge

PROJECT PROGRESS PHOTOS



New HS Ardrey Kell, South Mecklenburg

PROJECT PROGRESS PHOTOS



New HS Ardrey Kell, South Mecklenburg



New HS Ardrey Kell, South Mecklenburg



New HS Ardrey Kell, South Mecklenburg



Esperanza Global Academy



Esperanza Global Academy

PROJECT PROGRESS PHOTOS



Esperanza Global Academy



Esperanza Global Academy

PROJECT PROGRESS PHOTOS



Grove Park Elementary School



Grove Park Elementary School

PROJECT PROGRESS PHOTOS



Grove Park Elementary School



Mountain Island Lake Academy

PROJECT PROGRESS PHOTOS



Mountain Island Lake Academy

PROJECT PROGRESS PHOTOS



J.T. Williams



Bruns Elementary School Replacement

PROJECT PROGRESS PHOTOS



Bruns Elementary School Replacement

PROJECT PROGRESS PHOTOS



West Charlotte High School Phase 2



West Charlotte High School Phase 2



New ES Elon Park, Hawk Ridge, Polo Ridge

PROJECT PROGRESS PHOTOS



New ES Elon Park, Hawk Ridge, Polo Ridge

PROJECT PROGRESS PHOTOS



New ES Elon Park, Hawk Ridge, Polo Ridge

PROJECT PROGRESS PHOTOS



New HS Ardrey Kell, South Mecklenburg

PROJECT PROGRESS PHOTOS



New HS Ardrey Kell, South Mecklenburg



New HS Ardrey Kell, South Mecklenburg



New HS Ardrey Kell, South Mecklenburg



Esperanza Global Academy



Esperanza Global Academy

PROJECT PROGRESS PHOTOS



Esperanza Global Academy

PROJECT PROGRESS PHOTOS



Esperanza Global Academy

PROJECT PROGRESS PHOTOS



Grove Park Elementary School



Grove Park Elementary School

PROJECT PROGRESS PHOTOS



Grove Park Elementary School



Mountain Island Lake Academy

PROJECT PROGRESS PHOTOS



Mountain Island Lake Academy

PROJECT PROGRESS PHOTOS



J.T. Williams



Bruns Elementary School Replacement

PROJECT PROGRESS PHOTOS



Bruns Elementary School Replacement

PROJECT PROGRESS PHOTOS



West Charlotte High School Phase 2



West Charlotte High School Phase 2

PROJECT CONTROLS

**CHARLOTTE-MECKLENBURG BOARD OF EDUCATION
2013 BOND SERIES-CAPITAL IMPROVEMENT PROGRAM
BUDGET STATUS REPORT**

	Original Project Budget	Current Project Budget	Committed Amount	Approved Change Orders	Total Committed	Pending Commitments	To Be Committed	Prev Paid To Date	Paid To Date	Balance To Complete	Monthly Expenditure
	(A)	(B)	(C)	(D)	(E)=C+D	(F)	(G)=(B-E-F)	(H)	(I)	(J)=(B-I)	(K)=(I-H)
<u>A. REPLACEMENT & RENOVATIONS</u>											
1 Career & Technology Education Institutes Phase 1:	\$8,640,000	\$18,697,857	\$6,811,184	\$11,886,062	\$18,697,246	\$0	\$611	\$18,457,730	\$18,458,928	\$238,928	\$1,198
2 Davidson K-8 Conversion	\$9,500,000	\$13,461,149	\$2,131,151	\$11,329,998	\$13,461,149	\$0	\$0	\$13,461,149	\$13,461,149	\$0	\$0
3 J.M. Alexander Middle Replacement	\$30,672,000	\$29,845,539	\$4,502,518	\$25,343,021	\$29,845,539	\$0	\$0	\$29,845,539	\$29,845,539	\$0	\$0
4 Nations Ford Elementary Replacement	\$19,440,000	\$19,231,604	\$3,958,871	\$15,272,733	\$19,231,604	\$0	\$0	\$19,231,604	\$19,231,604	\$0	\$0
5 Northwest School of the Arts	\$12,420,000	\$12,868,718	\$2,047,917	\$10,820,801	\$12,868,718	\$0	\$0	\$12,868,719	\$12,868,719	\$0	\$0
6 Oakhurst STEAM Magnet Elementary/Starmount	\$5,940,000	\$5,407,812	\$3,471,397	\$1,936,415	\$5,407,812	\$0	\$0	\$5,407,812	\$5,407,812	\$0	\$0
7 Pre-K-8 Conversions Phase II: Ashley Park/ Bruns	\$24,732,000	\$19,700,807	\$4,167,671	\$15,533,138	\$19,700,809	\$0	\$0	\$19,700,807	\$19,700,807	\$0	\$0
8 Selwyn Elementary	\$2,592,000	\$4,624,831	\$744,799	\$3,880,032	\$4,624,831	\$0	\$0	\$4,624,831	\$4,624,831	\$0	\$0
9 Statesville Road Elementary	\$20,340,000	\$20,648,509	\$5,081,473	\$15,567,037	\$20,648,509	\$0	\$0	\$20,648,509	\$20,648,509	\$0	\$0
10 West Mecklenburg HS	\$0	\$3,993,543	\$3,993,543	\$0	\$3,993,543	\$0	\$0	\$3,993,543	\$3,993,543	\$0	\$0
Total Replacement & Renovations	\$134,276,000	\$148,480,367	\$36,910,523	\$111,569,237	\$148,479,760	\$0	\$612	\$148,240,243	\$148,241,440	\$238,926	\$1,198
<u>B. RESPONSE TO ENROLLMENT GROWTH</u>											
1 East Mecklenburg High Addition	\$12,744,000	\$12,083,804	\$4,465,200	\$7,618,603	\$12,083,803	\$0	\$0	\$12,083,803	\$12,083,803	\$0	\$0
2 Myers Park High Addition	\$22,248,000	\$11,040,942	\$1,207,493	\$9,833,448	\$11,040,942	\$0	\$0	\$11,040,941	\$11,040,941	\$0	\$0
3 Northridge Middle Addition	\$6,448,000	\$6,366,170	\$2,114,306	\$4,251,865	\$6,366,171	\$0	\$0	\$6,366,171	\$6,366,171	\$0	\$0
4 Olympic High Addition/Renovation	\$8,964,000	\$8,947,310	\$2,002,694	\$6,944,615	\$8,947,310	\$0	\$0	\$8,947,310	\$8,947,310	\$0	\$0
5 South Mecklenburg High Addition	\$18,360,000	\$16,307,355	\$2,922,282	\$13,385,073	\$16,307,355	\$0	\$0	\$16,307,355	\$16,307,355	\$0	\$0
6 Charlotte East Language Academy (FKA -New Lang	\$30,376,000	\$31,387,929	\$5,740,182	\$25,647,747	\$31,387,929	\$0	\$0	\$31,387,929	\$31,387,929	\$0	\$0
7 Rea Farms STEAM Academy	\$31,376,000	\$40,476,000	\$9,077,465	\$29,821,441	\$38,898,906	\$0	\$1,577,094	\$38,898,906	\$38,898,906	\$1,577,094	\$0
8 Renaissance West STEAM Academy (FKA New Pre-	\$30,376,000	\$31,698,952	\$5,667,388	\$26,031,564	\$31,698,952	\$0	\$0	\$31,698,952	\$31,698,952	\$0	\$0
9 New High School - South Meck/Ardrey Kell Relief *	\$0	\$9,278,699	\$9,278,699	\$0	\$9,278,699	\$0	\$0	\$9,278,699	\$9,278,699	\$0	\$0
Total Response to Enrollment Growth	\$160,892,000	\$167,587,161	\$42,475,710	\$123,534,357	\$166,010,067	\$0	\$1,577,094	\$166,010,066	\$166,010,066	\$1,577,095	\$0
<u>C. CONTINGENCY</u>											
	\$0	\$0	\$0	\$0	\$0	\$0	\$0	\$0	\$0	\$0	\$0
Total Contingency	\$0	\$0	\$0	\$0	\$0	\$0	\$0	\$0	\$0	\$0	\$0
TOTAL LOCAL BOND PROGRAM	\$295,168,000	\$316,067,527	\$79,386,233	\$235,103,594	\$314,489,827	\$0	\$1,577,706	\$314,250,309	\$314,251,506	\$1,816,021	\$1,198

Original project estimated costs approved by the Board Of Education on July 23, 2013 and approved by the voters of Mecklenburg County on November 5, 2013.

Note: Mecklenburg County's appropriated interest from COPS to increase funding for the 2013 Bond Program.

**CHARLOTTE-MECKLENBURG BOARD OF EDUCATION
2017 BOND SERIES-CAPITAL IMPROVEMENT PROGRAM
BUDGET STATUS REPORT**

	Original Project Budget	Current Project Budget	Committed Amount	Approved Change Orders	Total Committed	Pending Commitments	To Be Committed	Prev Paid To Date	Paid To Date	Balance To Complete	Monthly Expenditure
	(A)	(B)	(C)	(D)	(E)=C+D	(F)	(G)=(B-E-F)	(H)	(I)	(J)=(B-I)	(K)=(I-H)
<u>A. REPLACEMENT & RENOVATIONS</u>											
1 Briarwood Elementary *	\$29,091,619	\$31,243,066	\$4,730,586	\$26,410,339	\$31,140,925	(\$1,500)	\$103,642	\$31,129,457	\$31,129,457	\$113,609	\$0
2 Bruns Academy Replacement	\$34,207,808	\$48,890,679	\$4,219,029	\$42,406,336	\$46,625,365	\$0	\$2,265,314	\$4,129,473	\$7,026,705	\$41,863,974	\$2,897,232
3 Career & Technology Education Upgrades	\$10,101,734	\$9,659,765	\$2,290,761	\$3,766,908	\$6,057,669	(\$176)	\$3,602,272	\$5,692,038	\$5,692,038	\$3,967,727	\$0
4 Collinswood K-8 *	\$44,172,540	\$41,412,015	\$4,927,263	\$36,484,752	\$41,412,015	\$0	\$0	\$41,401,384	\$41,401,384	\$10,631	\$0
5 East Mecklenburg HS	\$12,771,594	\$10,231,911	(\$1,651,251)	\$11,823,832	\$10,172,581	\$0	\$59,331	\$10,085,792	\$10,085,792	\$146,119	\$0
6 Garinger HS	\$13,936,979	\$5,236,979	\$1,595,688	\$3,534,819	\$5,130,506	\$0	\$106,473	\$4,208,547	\$4,225,518	\$1,011,462	\$16,971
7 Harding University High *	\$18,330,263	\$13,747,878	\$2,045,267	\$11,702,610	\$13,747,877	\$0	\$0	\$13,747,877	\$13,747,877	\$0	\$0
8 Charlotte-Mecklenburg Academy (FKA -EC Specialty	\$18,957,960	\$17,699,220	\$2,175,504	\$15,523,717	\$17,699,220	\$0	\$0	\$17,699,220	\$17,699,220	\$0	\$0
9 Lansdowne Elementary	\$29,391,270	\$33,804,188	\$3,981,190	\$29,465,004	\$33,446,194	\$33,075	\$324,920	\$31,327,305	\$31,395,256	\$2,408,933	\$67,950
10 Lincoln Heights Elementary	\$3,740,478	\$4,588,675	\$2,709,260	\$817,550	\$3,526,810	\$0	\$1,061,865	\$1,424,443	\$1,732,368	\$2,856,307	\$307,924
11 Montclair Elementary Replacement *	\$28,559,390	\$28,200,634	\$2,426,761	\$25,773,873	\$28,200,634	\$0	\$0	\$28,200,634	\$28,200,634	\$0	\$0
12 Mountain Island k-8	\$9,218,439	\$13,239,686	\$1,675,333	\$11,418,864	\$13,094,197	\$12,000	\$133,489	\$8,450,327	\$9,261,972	\$3,977,714	\$811,645
13 Northwest School of the Arts	\$17,632,202	\$12,167,000	\$5,176,088	(\$613,656)	\$4,562,432	\$0	\$7,604,568	\$1,069,332	\$1,144,441	\$11,022,559	\$75,110
14 Shamrock Gardens Elementary *	\$29,890,351	\$30,784,692	\$3,464,099	\$26,234,783	\$29,698,882	\$0	\$1,085,810	\$29,204,710	\$29,216,782	\$1,567,910	\$12,072
15 Sharon Elementary	\$7,706,528	\$9,125,862	\$1,430,125	\$7,675,679	\$9,105,804	\$0	\$20,058	\$9,067,791	\$9,067,791	\$58,071	\$0
16 South Mecklenburg HS	\$13,352,143	\$15,622,927	\$1,809,394	\$94,238	\$1,903,632	\$5,758,058	\$7,961,237	\$725,613	\$761,024	\$14,861,903	\$35,411
17 E.E. Waddell Magnet HS	\$4,571,709	\$5,137,367	\$2,913,212	\$299,596	\$3,212,809	\$12,000	\$1,912,558	\$2,024,842	\$2,043,058	\$3,094,309	\$18,216
18 West Charlotte HS Replacement	\$109,977,166	\$104,413,163	\$11,977,311	\$91,526,597	\$103,503,908	\$71,071	\$838,184	\$94,907,969	\$96,333,878	\$8,079,284	\$1,425,909
19 West Mecklenburg HS	\$11,065,440	\$6,259,479	(\$2,371,639)	\$8,631,118	\$6,259,479	\$0	\$0	\$6,260,654	\$6,260,654	\$0	\$0
20 John Taylor Williams	\$13,964,339	\$17,032,600	\$3,585,069	\$12,492,488	\$16,077,557	\$164,791	\$790,252	\$8,878,377	\$10,453,782	\$6,578,818	\$1,575,405
Total Replacement & Renovations	\$460,639,952	\$458,497,787	\$59,109,049	\$365,469,447	\$424,578,496	\$6,049,319	\$27,869,972	\$349,635,788	\$356,879,633	\$101,618,154	\$7,243,845
<u>B. RESPONSE TO ENROLLMENT GROWTH</u>											
1 South Academy of International Languages	\$45,359,367	\$40,669,909	\$5,953,333	\$34,716,308	\$40,669,641	\$0	\$268	\$40,586,977	\$40,586,977	\$82,932	\$0
2 North Academy of World Languages (FKA - New K-8	\$45,359,367	\$41,739,951	\$6,022,055	\$35,717,896	\$41,739,951	\$0	\$0	\$41,742,062	\$41,742,062	\$0	\$0
3 South Pine Academy (FKA - New ES Nations Ford, S	\$29,173,829	\$30,438,977	\$6,793,874	\$23,596,443	\$30,390,317	\$0	\$48,660	\$30,474,698	\$30,474,698	\$0	\$0
4 Mint Hill Elementary School	\$29,988,332	\$29,671,526	\$3,296,183	\$26,027,305	\$29,323,488	\$0	\$348,038	\$28,641,807	\$28,644,370	\$1,027,155	\$2,563
5 New Elementary School - Windsor Park Relief *	\$30,422,230	\$45,855,770	\$13,322,535	\$31,504,771	\$44,827,306	\$111,113	\$917,351	\$23,656,990	\$29,538,560	\$16,317,210	\$5,881,570
6 New Elementary School - Elon/Hawk Ridge Relief *	\$30,426,712	\$60,641,761	\$16,493,640	\$43,464,051	\$59,957,690	\$18,400	\$665,670	\$31,080,667	\$32,674,702	\$27,967,058	\$1,594,035
7 New Elementary School - Hidden Valley Relief	\$30,518,345	\$44,079,387	\$6,554,343	\$36,597,989	\$43,152,332	\$8,000	\$919,055	\$27,024,514	\$29,432,350	\$14,647,038	\$2,407,836
8 Palisades High School	\$109,908,793	\$107,592,534	\$10,900,977	\$96,401,797	\$107,302,774	\$21,742	\$268,018	\$104,491,501	\$104,840,583	\$2,751,951	\$349,082
9 New High School - South Meck/Ardrey Kell Relief *	\$110,287,621	\$146,286,358	\$11,528,358	\$125,664,701	\$137,193,059	\$663,270	\$8,430,029	\$47,950,441	\$55,437,614	\$90,848,744	\$7,487,173
Total Response to Enrollment Growth	\$461,444,596	\$546,976,173	\$80,865,298	\$453,691,260	\$534,556,558	\$822,526	\$11,597,089	\$375,649,657	\$393,371,916	\$153,604,257	\$17,722,259
<u>C. CONTINGENCY</u>											
	\$0	\$0	\$0	\$0	\$0	\$0	\$0	\$0	\$0	\$0	\$0
Total Contingency	\$0	\$0	\$0	\$0	\$0	\$0	\$0	\$0	\$0	\$0	\$0

**CHARLOTTE-MECKLENBURG BOARD OF EDUCATION
2017 BOND SERIES-CAPITAL IMPROVEMENT PROGRAM
BUDGET STATUS REPORT**

	Original Project Budget	Current Project Budget	Committed Amount	Approved Change Orders	Total Committed	Pending Commitments	To Be Committed	Prev Paid To Date	Paid To Date	Balance To Complete	Monthly Expenditure
	(A)	(B)	(C)	(D)	(E)=C+D	(F)	(G)=(B-E-F)	(H)	(I)	(J)=(B-I)	(K)=(I-H)
TOTAL LOCAL BOND PROGRAM	\$922,084,548	\$1,005,473,960	\$139,974,348	\$819,160,706	\$959,135,054	\$6,871,844	\$39,467,061	\$725,285,445	\$750,251,549	\$255,222,411	\$24,966,104

Original project estimated costs approved by the Board Of Education on July 25, 2017 approved by the voters of Mecklenburg County on November 7, 2017.

*Project included in \$33.2M early funding approved by Board Of Education on August 9, 2016 and Mecklenburg Board of County Commissioners on September 6, 2016. On February 19, 2019 an additional \$8M was approved for New Elementary School - Elon/Hawk Ridge Relief site.

*Current Budget includes an additional \$89.2M to fund increase land and construction costs. The additional funds were approved by the Board of County Commissioners on June 16, 2020.

The New Elementary School - Elon/Hawk Ridge Relief current Budget includes 6.8M for Park and Recreation Project.

Bruns Academy Replacement current budget includes \$1.5M for Park and Recreation Project.

Current Program Budget reflects a reclass of \$7.4M in expenditures to 2007 Bond Program and \$14.4M in expenditures to 2013 Bond Program.

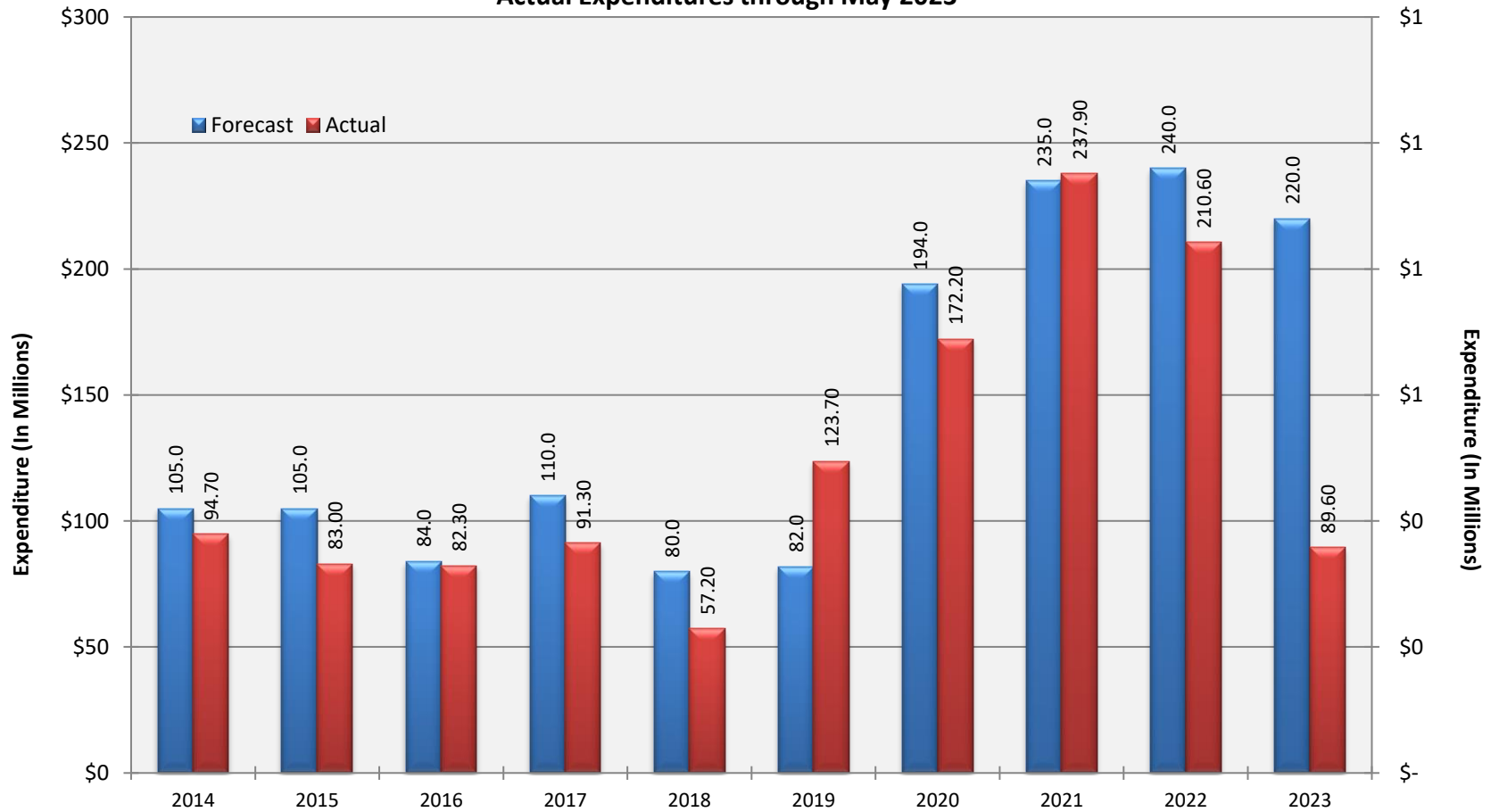
**Charlotte-Mecklenburg Board of Education
Approved Construction or Repair Change Orders*
Reporting Period: May 2023**

Funding Source	Project Name	Contractor	Description	Change Order Amount	Revised Contract Value
2017 Bond	JT Williams (17)	New Atlantic Contracting, Inc.	Electrical Modifications to Building 100; Delete Retaining Wall; Masonry Modifications	\$47,556.91	\$12,861,589.91
2017 Bond	East Mecklenburg High School (17)	Turner Construction Company	Final Contract Reconciliation	(\$28,657.41)	\$11,460,542.84

* Not previously presented to the Board of Education for Approval

10 YEAR EXPENDITURE SUMMARY

Forecast Expenditure versus
Actual Expenditures through May 2023



GLOSSARY

Glossary

- **Project Management** – This section includes updates from our project managers and describes the currently active construction projects. This includes from Board of Education award thru final completion.
- **Design and Bidding** – This section contains updates from our design managers on the projects currently in the design phase. This phase from design award to Board of Education award of construction.
- **Controls** – Section includes misc. updates from controls group including expenditures, related Board of Education awards during the reporting period, cash flow information. This section covers all projects from approved bond through final expenditures and bond close with the county.
- **MWSBE** – Contains updates from the MWSBE Director and team, including current activity and summaries of the participation by MWSBE providers on our program.
- **Bond Progress Summary** – Provides a summary of bond financials including bond value, committed/pending amounts, paid to date, expended this month.
- **Project Procurement Dates** - Next 90 Days major project bid activity.
- **Mobile Swing Space Utilization** – Includes a summary of program related swing space currently in use and the schedule of use.
- **Bond Summary Schedule** – Current program summary schedule including planned design, construction and FF&E. These activities are fed from detailed schedules and are fine-tuned as project information is available.
- **Project Contractor Teams**; Provides summary of turnover dates for completed/closed projects since 2010 including architects/designers and contractors.
- **School Site Location Maps** – General location of bond projects (2017) by type.
- **Project Status Report** – This section of the report provides a summary of the bond project scope, current estimate (all sources), planned occupancy/actual occupancy date. It also provides a current status of the design phase, construction progress and a brief update. The report currently includes 2013 and 2017 bond projects that have or will be completed after to August 2016.
- **MWSBE Participation Report** – The MWSBE report provides a summary of the participation on the 2013 & 2017 Bond funded projects.
- **Project Progress Photos** – Includes photos of active construction projects.
- **Budget Summary Reports** – These reports are by funding source and summarize financial activity to date on the projects. This includes original and current project estimates, committed values, amounts paid to date, balances and monthly expenditures.
- **Change Orders < \$90,000** – This month's approved construction or repair change orders < \$90,000.
- **Expenditure Summary** – Provides a summary of Bond Expenditures by calendar year.