

Capital Improvement Program

Monthly Bond Report March 2023



New ES (Hidden Valley, JW Grier, Newell)



CAPITAL PROGRAM SERVICES

Capital Improvement Program

MARCH 2023

MONTHLY BOND REPORT

PROGRAM OVERVIEW

- Project Management
- Design and Bidding
- Controls
- MWSBE
- Bond Progress Summary
- Project Procurement - Next 90 Days
- Swing Space Utilization
- Bond Summary Schedule
- Project Contractor Teams; Projects in Design/Construction and Substantially Completed/Closed
- School Site Location Maps
 - Elementary Schools
 - Middle Schools
 - High Schools & Specialty Schools

PROJECT STATUS REPORT

MWSBE PARTICIPATION REPORT

PROJECT PROGRESS PHOTOS

PROJECT CONTROLS

- Budget Summary Reports
 - 2013 Bond Series
 - 2017 Bond Series
- Change Orders < \$90,000
- Expenditure Summary

GLOSSARY

PROGRAM OVERVIEW

PROJECT MANAGEMENT

The following is a summary of the activity on the bond funded projects in construction during the month of March.

The **Bruns ES Replacement** project team focused on site work to bring the site up to building pad elevation. The site work contractor installed the underground detention located under the bus parking lot along with storm drainage throughout the project. The temporary soil was installed to support the existing bus drive for the duration of the new building construction. The new building is scheduled for occupancy August of 2024.

The construction manager for the **Garinger Addition and Renovation** project has completed commissioning activities for the 300 building renovations. The replacement glass and glazing will continue over the next couple of months. The building was occupied in January 2023.

The construction manager for **JT Williams Secondary Montessori** completed interior renovations for the 100 Building with the exception of supply chain issues affecting delivery of the mechanical roof top units. This, in conjunction with the timing of the required fire-line water taps, will impact the 100 Building occupancy in early spring. The modular classroom building is complete and occupied by staff and students. The 200 Building renovations have started with selective interior demolition. Lay in ceilings and original plaster ceilings are being removed. Site work including new fire line tie in is scheduled for summer 2023.

The **Lansdowne Elementary School** playfield has been seeded and straw installed. The site contractor continues to work on stabilizing the site. Erosion control perimeter silt fence remains as grassing progresses. The new playgrounds have been installed and opened for students. The site work will be substantially completed in April.

The **Lincoln Heights** repurpose project renovations continue and have moved into Phase 2 which moved the occupants from the second floor to the first. New VCT and teaching walls are progressing down the corridor. Renovations at the Trillium Springs Montessori have been designed and permits requested. Change order proposals have been issued and additional work is scheduled for Board review on April 4. The building is scheduled for occupancy August 2023.

The **Mountain Island Lake Academy Gym/Classroom Addition** construction manager completed the installation of the roof and window/door systems allowing the architect to certify the building as dried-in. This certification allowed the installation of finishes to begin. The first coat of paint and ceiling grid installations began along with the gym floor to be delivered. The building air is being controlled with temporary devices as the permanent RTU's have been delayed by the manufacture. The construction manager began the installation of the remaining parking lot with final grading, island installations and stone base. The new building is scheduled for occupancy August 2023.

The **New Elementary School (Elon, Hawk Ridge, Polo Relief)** construction manager continued to manage multiple trades on the project. The mason continued installations on the building and recreation center. The steel erector continued installations and the MEP trades continued with above ceiling installations. The metal stud contractor mobilized and installed the exterior studs for the administrative wing along with starting the three-story classroom wing. The new 45-classroom elementary school is located across from the Ardrey Kell High School and is scheduled for occupancy August 2024.

The **New Elementary School (Hidden Valley, JW Grier, Newell Relief)** construction manager continues back filling areas around the building to final grade as most of the brick veneer is complete. The site contractor has also been installing curb and gutter to support drives and parking lots. Interior finishes progress throughout including drywall, paint and ceramic tile in bathrooms. They have also focused on above ceiling rough-ins. Due to extended Charlotte Water lead times the installation for the new water tap is now scheduled in late spring, the team continues to

work through this and supply chain material delivery issues. This new 45-classroom school will be located next to Northridge Middle School and is scheduled for occupancy August 2023.

The **New Elementary School (Windsor Park, Winterfield, Idlewild Relief)** construction manager is nearing completion with site import, retaining walls and back fill around buildings. Window installation and interior finishes including drywall, paint and ceramic tile is ongoing. The MEP trades are progressing with above ceiling rough in work. This new 45-classroom school is currently scheduled for occupancy August 2023.

The **New High School (South, Ardrey Relief)** construction manager continued with footings and below grade masonry installations in addition to load bearing masonry throughout the building. Below slab electrical and plumbing rough-ins continue along with slab prep. The mason continues with the installation of interior CMU walls and below grade masonry at the out buildings. Site work is ongoing including sanitary, storm installations and retaining walls throughout the site. The concrete retaining wall at the bottomless culvert and the stream crossing work began and will continue into next month. The new 100-classroom relief high school is scheduled for occupancy August 2024.

The **West Charlotte High School** construction manager continues to work on the Phase 2 (demolition/site work). The site is nearing final grades as retaining walls and earth moving are finalized. The curb and gutter for parking lots and drives is progressing. The concessions building is well underway. Baseball and softball fields are also nearing final grades. The team continues to coordinate the project with school administration. The demolition/and site work phase is scheduled for completion in August 2023.

DESIGN AND BIDDING

The following is a summary of the activity on the bond funded projects in design and bidding phase during the month of March.

The **Northwest School of the Arts** project has progressed to design development for Phase 1 and 2. The Phase 1 design scope includes the underground storm water detention system and new car parking lot in preparation for Phase 2. Phase 2 scope includes a new administration, visual/performing arts building and other campus renovations. The car parking modifications are scheduled to begin in the fall of 2023.

The **South Mecklenburg High School Addition** project has completed the construction document phase and will begin the procurement phase in April starting with long lead phase one packages. The project consists of a 3-story classroom addition providing 19 classrooms that support core curriculum subjects, CTE program, visual arts and the JROTC program. Mobiles will be relocated the summer 2023 to allow construction of the new building to begin in the fall of 2023 and be available for occupancy January 2025.

CONTROLS

Expenditures for the month of March were \$15.3M. This brings our fiscal year to date total to \$145.3M against the 2023 fiscal year cash flow projection of \$200M. The Controls team is continuing the review of open purchased orders for completed projects. Unexpended balances are being identified and accumulated to be used for future capital needs.

The Controls team continues to submit notices of potential changes at school sites so senior staff can adequately evaluate any issues. Additionally, the Controls team continues the processing of contracts, invoices, preparing notices of potential change, change orders, pay applications, and check requests for projects under construction. Captured construction cost data is used to prepare financial reports such as detailed cost reports, budget summaries,

reconciliation to CMS books, revisions to and updated cash flows and complete special financial requests by CMS and Mecklenburg County. This process, along with data compilation and management, allows senior staff to provide the proper guidance/direction and accurate information to the program stakeholders.

No Bond related consent items were submitted for Board of Education approval during the month of March.

MWSBE

As of March 2023, the overall MWSBE utilization percentage related to design and construction of the 2017 bond projects is 46.47% which includes 19.53% participation by minority contractors, 25.23% by women contractors and 1.71% participation by small business contractors. This accounts for more than \$389 million of utilization by Minority, Women and Small Business Contractors.

The Diversity & Inclusion Office of Charlotte-Mecklenburg Schools continued to conduct several individual virtual orientations with new MWSBE contractors and prime contractors. In addition, team members also attended/hosted the following outreach sessions/pre-bid meetings and/or workforce development opportunities:

Outreach Sessions:

- NC State Construction Conference
- NC PEAK Procurement Conference
- Carolinas-Virginia Minority Supplier Development Council Centers of Excellence
- Served on AGC Construction Business Academy Panel
- Women Business Enterprise National Conference
- Charlotte MED Week 2023 Planning

Charlotte-Mecklenburg Schools will host a Supplier Diversity Summit on April 26th at 9:00 – 11:00 a.m. at E. E. Waddell located at 7030 Nations Ford Road. Representatives from Building Services, Custodial Services, Procurement Services, Student Services, Technology Services and Transportation will provide information on how to do business with the school district.

Workforce Development:

“She Built This City” provided an update on available programs for women and girls in the construction industry ensuring that the next generation of the skilled trades is diverse and infused with technology. Over the summer and next school year programming will be offered for middle and high school students that will focus on community service projects and apprenticeship/internship opportunities. For more information on how to partner with She Built This City, contact info@shebuiltthiscity.org.



Over the next month, team members will continue to work with contractors interested in bidding on the upcoming school projects utilizing various virtual tools to communicate. Contractors are encouraged to review bid advertisements in Charlotte Observer and register as a vendor on the North Carolina Interactive Purchasing System for notification of the various opportunities.

BOND PROGRESS SUMMARY As of March 2023

Funding Source and Value		Amount Committed/Pending	Amount Paid to Date	Amount Expended This Period
'13 Bond	\$316,067,527	\$314,490,242	\$314,248,260	\$207,800
'17 Bond	\$1,018,618,062	\$958,699,571	\$707,752,991	\$15,128,065
Grand Total	\$1,334,685,589	\$1,273,189,813	\$1,022,001,251	\$15,335,865

UPCOMING MAJOR CONSTRUCTION PROCUREMENT DATES *Three Month Look Ahead*

School Name

Bid Dates*

South Mecklenburg Phase I
Managed by CM (Balfour Beatty)

May 2023

Northwest School of the Arts Phase I
Managed by CM (Balfour Beatty)

May 2023

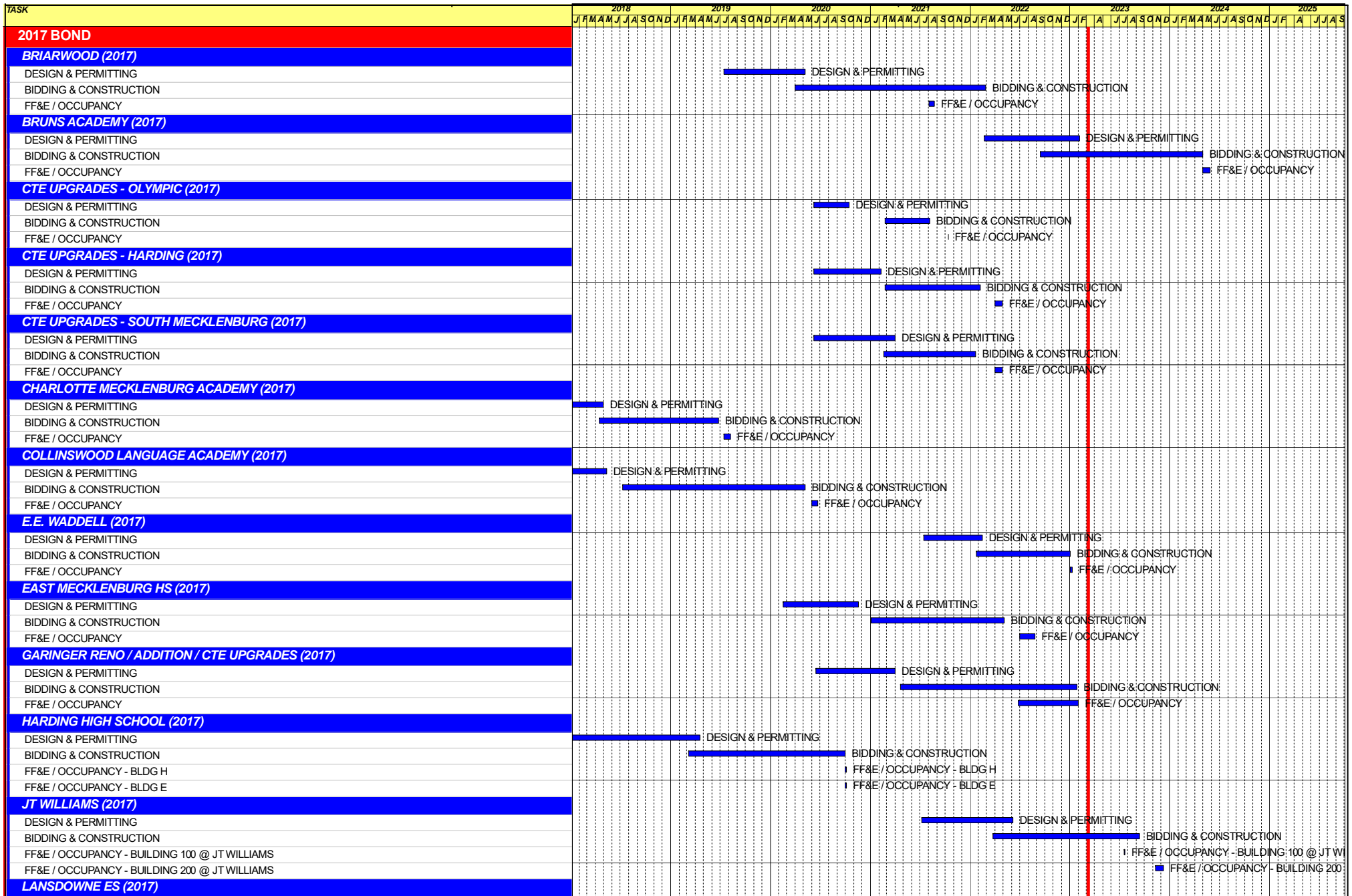
** NOTE: Work In Progress...Dates Subject to Change.*

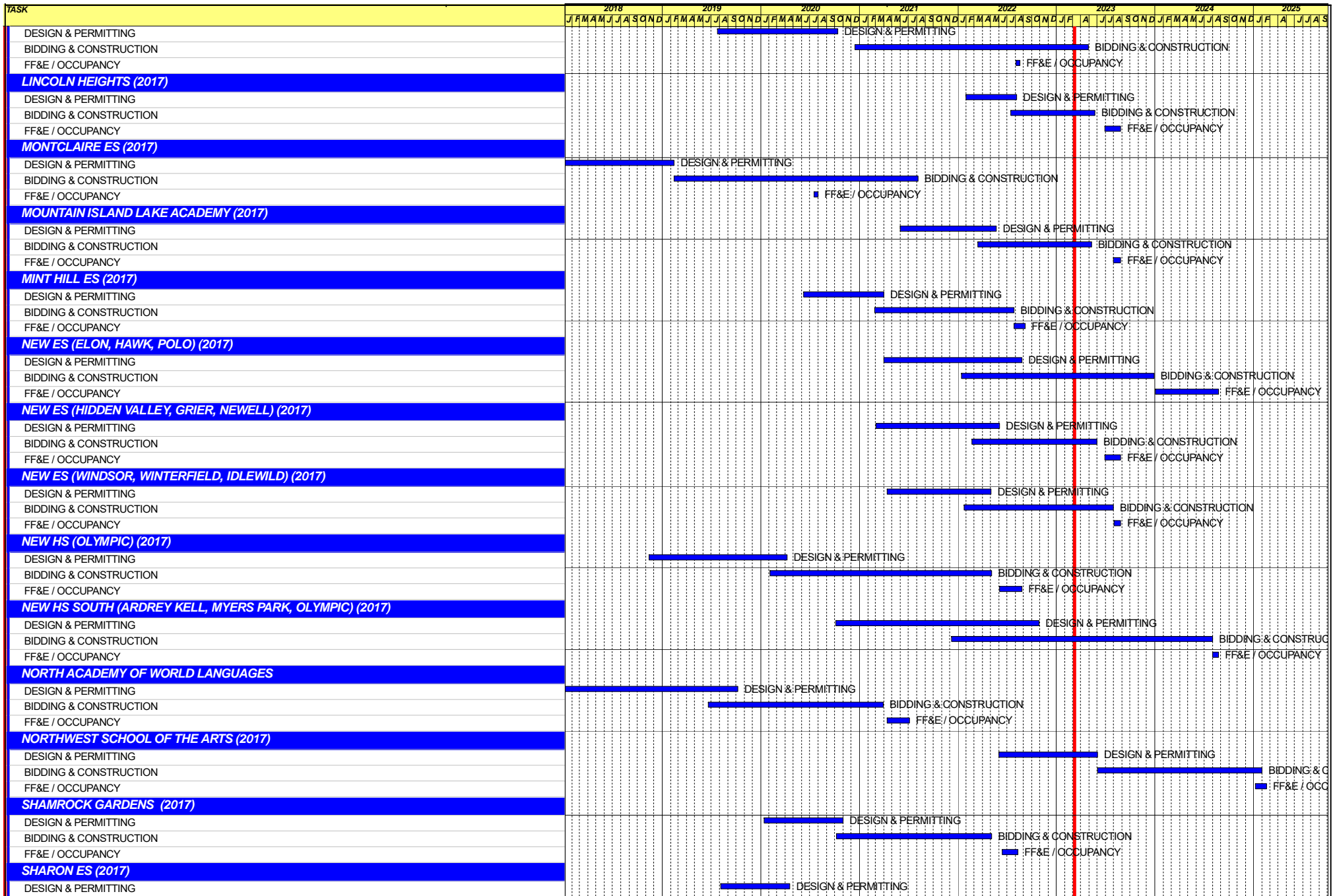
SWING SPACE UTILIZATION

Creating a temporary space for students and staff to occupy during construction on a school’s campus has proven to be beneficial to the project’s schedule and cost and overall safety and efficiency of school operations. When the renovation or expansion of a facility is performed and the facility must remain functionally operational, there are benefits to the owner in using swing space.

We have successfully utilized both onsite and offsite swings. The most desirable swings are “offsite” ones. Onsite swing using mobiles or modulars, likewise has been successfully used. The following is a summary of current swing options planned or in use.

<u>School</u>	<u>No. of Mobiles/Relocation Site</u>	<u>Status (From – To)</u>
J.T. Williams	10-classroom modular	March 2023 – TBD





Capital Improvements Program
Projects in Design or Under Construction

School	Architect	General Contractor/CM
Projects In Design		
Northwest School of the Arts Addition (17)	LS3P	Balfour Beatty
South Mecklenburg High School Addition (17)	Morris Berg	Balfour Beatty
Projects in Bid/Award/Construction Phase		
New Bruns Avenue ES (17)	ADW	Edifice, Inc.
J.T. Williams (17)	FWA	New Atlantic
Lansdowne Elementary School Replacement (17)	Perkins Eastman	Edifice, Inc.
Lincoln Heights Repurpose (17)	Neighboring Concepts	Randolph & Sons
Mountain Island School (17)	ADW	Whiting-Turner
New ES (Elon,Hawk Ridge, Polo Ridge) (17)	Little Diversified	Balfour Beatty
New ES (Hidden Valley, JW Grier, Newell) (17)	ADW	Edifice, Inc.
New ES (Windsor, Winterfield, Idlewild) (17)	Neighboring Concepts	Rodgers-Holt Brothers
New HS (South, Ardrey) (17)	Ratio	Messer
West Charlotte High School (17)	LS3P	Rodgers-Holt Brothers

Capital Improvements Program
Projects Substantially Completed/Closed *

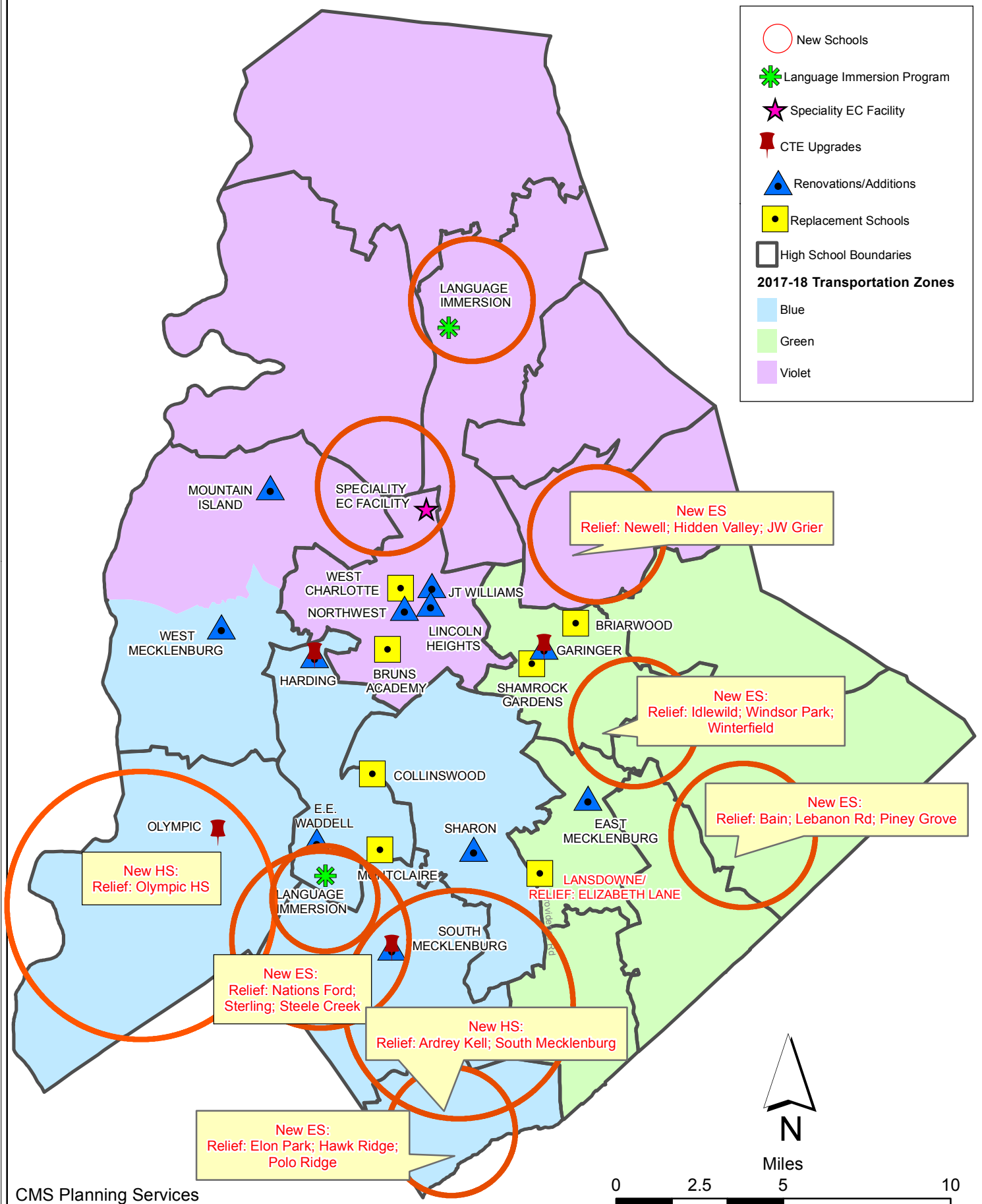
School	Turnover Year	Architect	General Contractor
E.E. Waddell (17)	Jan-23	Moseley	Randolph & Sons Builders
Garinger Addition/Renovation & CTE (17)	Jan-23	LS3P	Balfour Beatty
Palisades High School (Olympic Relief) (17)	Aug-22	Little Diversified	Edifice, Inc.
Shamrock Gardens Elementary School Replacement (17)	Aug-22	Little Diversified	Rodgers/Holt Brothers
Mint Hill ES (17) (fka Bain, Lebanon Rd, Piney Grove)	Aug-22	FWA	Metcon
East Mecklenburg High School (17)	May-22	Morris Berg	Turner Construction
CTE (Harding, Olympic, South) (17)	Jan-22	MPS	Branch Brownstone
Briarwood Elementary School Replacement (17)	Aug-21	ADW	New Atlantic Contracting
Montclair Elementary School (17)	Aug-21	WHN	Messer Construction
North Academy of World Languages (17)	Aug-21	ADW	New Atlantic Contracting
Sharon Elementary School (17)	Aug-21	Clark Nexsen	Samet
South Academy of International Languages (17)	Aug-21	FWA	Messer Construction
South Pine Academy (17)	Aug-21	FWA	Metcon
West Mecklenburg Gym (17)	Aug-21	Moseley	Barnhill/D.A. Everett
Collinswood Language Academy (17)	Aug-20	Perkins Eastman	Turner Construction
Harding High School Renovation (17)	Aug-20	SFLA	Barnhill Contracting
Rea Farms STEAM Academy (13)	Aug-20	Little Diversified	Balfour Beatty
Ashley Park K-8 Conversion (13)	Aug-19	ADW	Turner Construction
Druid Hills K-8 Conversion (13)	Aug-19	ADW	Edifice, Inc.
Selwyn Elementary (13)	Aug-19	Clark Nexsen	Balfour Beatty
Charlotte Mecklenburg Academy (17)	Aug-19	KSQ	Edifice, Inc.
Davidson K-8 (13)	Aug-19	Little Diversified	Gilbane
CTE - North Mecklenburg High (13)	Aug-19	LS3P	Shiel Sexton
CTE - Garinger (13)	Mar-19	LS3P	Hostetter & Son
CTE - Independence (13)	Mar-19	LS3P	D.E. Brown
CTE - West Mecklenburg (13)	Mar-19	LS3P	Hostetter & Son
Charlotte East Language Academy (13)	Aug-18	Morris Berg	Edifice, Inc
Myers Park High School Phase 3 (13)	Aug-18	Boomerang Design	BE&K
Northridge Middle (13)	Aug-18	Morris Berg	Barnhill Contracting
Myers Park High Bldg 2 (13)	Feb-18	Boomerang Design	BE&K
East Mecklenburg High Addition (13)	Jan-18	Bergman (fna Gantt Huberman)	Edifice, Inc.
J.M. Alexander Middle (13)	Aug-17	FWA Group	Balfour Beatty
Northwest School of the Arts Renovation (13)	Aug-17	Moseley	Turner Construction
Renaissance West STEAM Academy (13)	Aug-17	Little Diversified	Rodgers Construction
South Mecklenburg High Addition (13)	Jul-17	SFLA	Barnhill Contracting
Myers Park High Bldg 1 (13)	Sep-16	Boomerang	KBR
Statesville Road Elementary (13)	Aug-16	ADW	JE Dunn
Nations Ford Elementary (13)	Aug-16	Wash Hatem Nelson	Messer Construction
Olympic High Addition (13)	Aug-16	McMillan, Pazdan, Smith	Turner Construction
Lawrence Orr Elementary (07)	Aug-15	Cort Architecural Group	DH Griffin/Metcon
Parkside Elementary (07)	Aug-15	Wash Hatem Nelson	Clancy & Theys
Hawthorne High Renovations (07)	Aug-15	Morris-Berg	Balfour Beatty
Newell Elementary (07)	Aug-15	Perkins Eastman	New Atlantic Contracting
Ranson Middle (07)	Aug-15	Morris-Berg	Edifice, Inc.
Vance High	Jan-15	LS3P	Matthews Construction Co., Inc.
Garinger High - Renovations/Addition	Aug-14	Adams Group Architects	Turner Construction
Olympic High - Stadium	Aug-14	Site Solutions	Turner Construction
West Mecklenburg High - Stadium	Aug-14	Site Solutions	Turner Construction
Collinswood - Indoor Air Quality	Aug-14	PEA	The Bowers Group
Lansdowne - Indoor Air Quality	Aug-14	AeroRaq	Tyler 2
McKee Road - Indoor Air Quality	Aug-14	McCracken & Lopez	Godfrey Construction
Garinger High - Track & Field	Jul-14	Site Solutions	Turner Construction
Independence High - Gym	Jun-14	Shook Kelly	Shelco, Inc. (CM)
Palisades Park Elementary	May-14	Wash Hatem Nelson	Clancy & Theys

Capital Improvements Program
Projects Substantially Completed/Closed *

School	Turnover Year	Architect	General Contractor
East Mecklenburg High Auditorium	Jan-14	Gantt Huberman Associates	Godfrey Construction Co., Inc.

Projects closed prior to 2014 are not shown

CMS Capital Improvement Plan 2017 Bond Projects



PROJECT STATUS REPORT



Monthly Project Status 2017 Bond Summary

March 2023

Project	Current Project Estimate	Project Scope	** Occupy On	Design Phase	Construction Progress	Project Status
Briarwood Elementary School (17)	\$ 31,243,066	45-classroom replacement facility; replaces school built in 1956.	August 2021	Complete	100 %	Project is complete.
Bruns Avenue Elementary School (17)	\$ 48,890,679	New 45-classroom elementary school (K-5); replaces old school built in 1969.	August 2024	Complete	2 %	The Bruns ES Replacement project team focused on site work to bring the site up to building pad elevation. The site work contractor installed the underground detention located under the bus parking lot along with storm drainage throughout the project. The temporary soil was installed to support the existing bus drive for the duration of the new building construction.
Career and Technology Education (17)	\$ 9,659,765	Phase I CTE upgrades at Olympic, Harding, Garinger and South Mecklenburg.	January 2022	Complete	100 %	Project is complete.
Charlotte-Mecklenburg Academy (17)	\$ 17,699,220	New EC school located on the old Statesville Elementary School site.	August 2019	Complete	100 %	Project is complete.
Collinswood Language Academy (17)	\$ 41,412,015	New 63-classroom K-8 facility on the site of the Smith Family Center.	August 2020	Complete	100 %	Project is complete.
E.E. Waddell (17)	\$ 5,137,367	Repurpose current E.E. Waddell to reopen as a magnet high school.	August 2023	Complete	99 %	The contractor for E.E. Waddell has completed the renovations. The project is now in closeout.
East Mecklenburg High School (17)	\$ 10,231,911	This project will provide for the design, and construction of a new 30 classroom building.	August 2022	Complete	99 %	The East Mecklenburg High School new classroom building was occupied in August. The project is now in the closeout phase.
Garinger High School (17)	\$ 5,236,979	Project includes the design and construction for renovations of 300 building and a new 16 classroom building.	January 2023	Complete	98 %	The construction manager for the Garinger Addition and Renovation project has completed commissioning activities for the 300 building renovations. The replacement glass and glazing will continue over the next couple of months.

Monthly Project Status

2017 Bond Summary

March 2023

Project	Current Project Estimate	Project Scope	** Occupy On	Design Phase	Construction Progress	Project Status
Harding High School (17)	\$ 13,747,878	Renovation of the kitchen, cafeteria, existing gym (aux) and the addition of a new gym.	August 2020	Complete	100 %	Project is complete.
JT Williams (17)	\$ 17,032,600	Project includes building renovations to J.T. Williams Montessori magnet.	August 2024	Complete	62 %	The construction manager for JT Williams Secondary Montessori completed interior renovations for the 100 Building with the exception of supply chain issues affecting delivery of the mechanical roof top units. This, in conjunction with the timing of the required fire-line water taps, will impact the 100 Building occupancy in early spring. The modular classroom building is complete and occupied by staff and students. The 200 Building renovations have started with selective interior demolition. Lay in ceilings and original plaster ceilings are being removed. Site work including new fire line tie in is scheduled for summer 2023.
Lansdowne Elementary School (17)	\$ 33,804,188	New 45-classroom school; replaces old school built in 1959 and relieve crowding at Elizabeth Lane ES.	August 2022	Complete	97 %	The Lansdowne Elementary School playfield has been seeded and straw installed. The site contractor continues to work on stabilizing the site. Erosion control perimeter silt fence remains as grassing progresses. The new playgrounds have been installed and opened for students. The site work will be substantially completed in April.
Lincoln Heights Elementary School (17)	\$ 4,588,675	Repurpose and reopen as magnet school.	August 2023	Complete	63 %	The Lincoln Heights repurpose project renovations continue and have moved into Phase 2 which moved the occupants from the second floor to the first. New VCT and teaching walls are progressing down the corridor. Renovations at the Trillium Springs Montessori have been designed and permits requested. Change order proposals have been issued and additional work is scheduled for Board review on April 4.
Mint Hill Elementary School (17)	\$ 29,671,526	New 45-classroom elementary school; relieves crowding at Bain, Lebanon Road, Piney Grove.	August 2022	Complete	99 %	The Mint Hill Elementary School project has moved into the closeout phase. The new signal at the entrance to the schools is currently scheduled to occur spring/summer 2023.
Montclair Elementary School (17)	\$ 28,200,634	New 45-classroom replacement facility replacing school built in 1958.	August 2020	Complete	100 %	Project is complete.

Monthly Project Status

2017 Bond Summary

March 2023

Project	Current Project Estimate	Project Scope	** Occupy On	Design Phase	Construction Progress	Project Status
Mountain Island Lake Academy (17)	\$ 13,239,686	K-8 Phase 2 - New gymnasium and specialty classrooms.	August 2023	Complete	68 %	The Mountain Island Lake Academy Gym/Classroom Addition construction manager completed the installation of the roof and window/door systems allowing the architect to certify the building as dried-in. This certification allowed the installation of finishes to begin. The first coat of paint and ceiling grid installations began along with the gym floor to be delivered. The building air is being controlled with temporary devices as the permanent RTU's have been delayed by the manufacture. The construction manager began the installation of the remaining parking lot with final grading, island installations and stone base.
New Elementary School (Elon, Hawk Ridge, Polo Relief) (17)	\$ 59,141,760	New 45-classroom elementary school to relieve Elon, Hawk Ridge, Polo.	August 2024	Complete	26 %	The New Elementary School (Elon, Hawk Ridge, Polo Relief) construction manager continued to manage multiple trades on the building and recreation center. The steel erector continued installations and the MEP trades continued with above ceiling installations. The metal stud contractor mobilized and installed the exterior studs for the administrative wing along with starting the three-story classroom wing.
New Elementary School (Hidden Valley, JW Grier, Newell) (17)	\$ 44,079,387	New 45-classroom elementary school; relieves overcrowding at Hidden Valley, J.W. Grier, Newell.	August 2023	Complete	68 %	The New Elementary School (Hidden Valley, JW Grier, Newell Relief) construction manager continues back filling areas around the building to final grade as most of the brick veneer is complete. The site contractor has also been installing curb and gutter to support drives and parking lots. Interior finishes progress throughout including drywall, paint and ceramic tile in bathrooms. They have also focused on above ceiling rough-ins. Due to extended Charlotte Water lead times the installation for the new water tap is now scheduled in late spring, the team continues to work through this and supply chain material delivery issues.

Monthly Project Status

2017 Bond Summary

March 2023

Project	Current Project Estimate	Project Scope	** Occupy On	Design Phase	Construction Progress	Project Status
New Elementary School (Windsor, Winterfield, Idlewild Relief) (17)	\$ 45,855,770	New 45-classroom elementary school to relieve Windsor, Winterfield, and Idlewild ES.	August 2023	Complete	62 %	The New Elementary School (Windsor Park, Winterfield, Idlewild Relief) construction manager is nearing completion with site import, retaining walls and back fill around buildings. Window installation and interior finishes including drywall, paint and ceramic tile is ongoing. The MEP trades are progressing with above ceiling rough in work.
New High School (South, Ardrey) (17)	\$ 160,930,460	New 100 classroom high school to relieve South Mecklenburg, Ardrey Kell and Myers Park HS.	August 2024	Complete	32 %	The New High School (South, Ardrey Relief) construction manager continued with footings and below grade masonry installations in addition to load bearing masonry throughout the building. Below slab electrical and plumbing rough-ins continue along with slab prep. The mason continues with the installation of interior CMU walls and below grade masonry at the out buildings. Site work is ongoing including sanitary, storm installations and retaining walls throughout the site. The concrete retaining wall at the bottomless culvert and the stream crossing work began and will continue into next month.
North Academy of World Languages (17)	\$ 41,739,951	New 66 classroom K-8 Language Immersion facility located on the old J.M. Alexander Middle School site.	August 2021	Complete	100 %	Project is complete.
Northwest School of the Arts (17)	\$ 12,167,000	Replace classroom buildings B&D and build classroom addition that supports program. 1st phase includes parking and U/G stormwater.	January 2025	Design Development	0 %	The Northwest School of the Arts project has progressed to design development for Phase 1 and 2. The Phase 1 design scope includes the underground storm water detention system and new car parking lot in preparation for Phase 2. Phase 2 scope includes a new administration, visual/performing arts building and other campus renovations. The car parking modifications are scheduled to begin in the fall of 2023.
Palisades High School (17)	\$ 107,592,534	New 100 classroom high school; relieves crowding at Olympic High School.	August 2022	Complete	99 %	The Palisades High School (fka New High School Olympic Relief) has been occupied by staff and students. The construction manager is in the closeout phase and is working with trade contractors to complete punch list and open issues.

Monthly Project Status

2017 Bond Summary

March 2023

Project	Current Project Estimate	Project Scope	** Occupy On	Design Phase	Construction Progress	Project Status
Shamrock Gardens Elementary School (17)	\$ 30,784,692	New 45-classroom replacement facility.	August 2022	Complete	100 %	Project is complete.
Sharon Elementary School (17)	\$ 9,125,862	Add 16 classroom building and increase capacity of cafeteria.	August 2021	Complete	100 %	Project is complete.
South Academy of International Languages (fka New K-8 School (South) (17)	\$ 40,669,909	New 71 classroom K-8 Language Immersion facility located on the old Nations Ford Elementary School site.	August 2021	Complete	100 %	Project is complete.
South Mecklenburg High School (17)	\$ 15,622,927	Renovate/replace two classroom buildings built in 1958 to upgrade learning conditions.	January 2025	Construction Documents	0 %	The South Mecklenburg High School Addition project has completed the construction document phase and will begin the procurement phase in April starting with long lead phase one packages. The project consists of a 3-story classroom addition providing 19 classrooms that support core curriculum subjects, CTE program, visual arts and the JROTC program. Mobiles will be relocated the summer 2023 to allow construction of the new building to begin in the fall of 2023 and be available for occupancy January 2025.
South Pine Academy (17)	\$ 30,438,977	New 45-classroom elementary school to relieve Nations Ford, Sterling, and Steele Creek.	August 2021	Complete	100 %	Project is complete.
West Charlotte High School (17)	\$ 104,413,163	New 100 classroom school to replace current facility built in 1954.	August 2022	Complete	94 %	The West Charlotte High School construction manager continues to work on the Phase 2 (demolition/site work). The site is nearing final grades as retaining walls and earth moving are finalized. The curb and gutter for parking lots and drives is progressing. The concessions building is well underway. Baseball and softball fields are also nearing final grades. The team continues to coordinate the project with school administration.
West Mecklenburg High School (17)	\$ 6,259,479	Provide new gymnasium, the existing gymnasium will become the auxilliary.	August 2021	Complete	100 %	Project is complete.

MONTHLY PROJECT PHOTOS



New ES Elon Park, Hawk Ridge, Polo Ridge

PROJECT PROGRESS PHOTOS



New ES Elon Park, Hawk Ridge, Polo Ridge

PROJECT PROGRESS PHOTOS



New ES Elon Park, Hawk Ridge, Polo Ridge

PROJECT PROGRESS PHOTOS



New HS Ardrey Kell, South Mecklenburg

PROJECT PROGRESS PHOTOS



New HS Ardrey Kell, South Mecklenburg

PROJECT PROGRESS PHOTOS



New HS Ardrey Kell, South Mecklenburg

PROJECT PROGRESS PHOTOS



New HS Ardrey Kell, South Mecklenburg



New ES Windsor, Winterfield, Idlewild



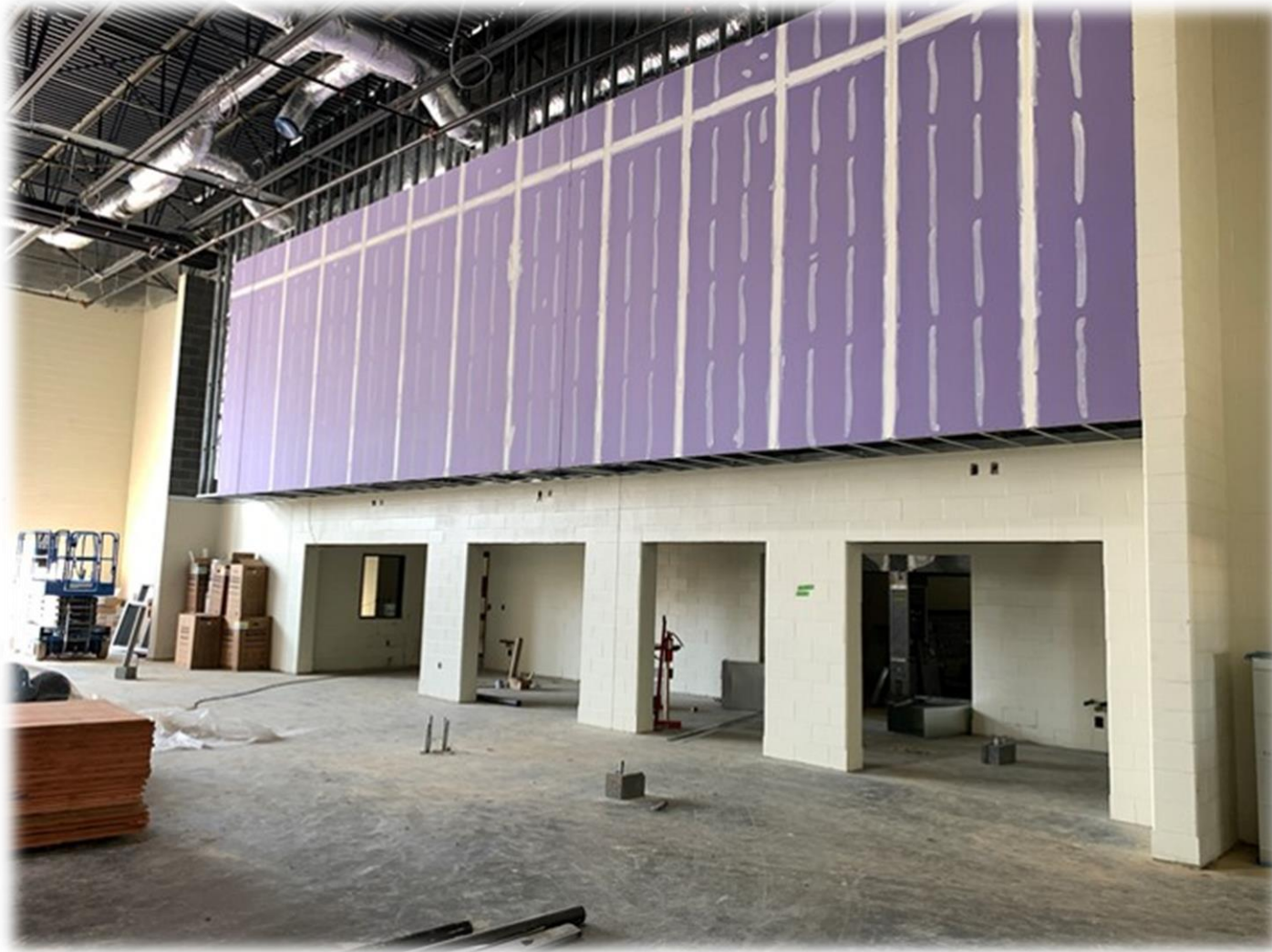
New ES Windsor, Winterfield, Idlewild

PROJECT PROGRESS PHOTOS



New ES Windsor, Winterfield, Idlewild

PROJECT PROGRESS PHOTOS



New ES Windsor, Winterfield, Idlewild

PROJECT PROGRESS PHOTOS



New ES Hidden Valley, JW Grier, Newell

PROJECT PROGRESS PHOTOS



New ES Hidden Valley, JW Grier, Newell

PROJECT PROGRESS PHOTOS



New ES Hidden Valley, JW Grier, Newell

PROJECT PROGRESS PHOTOS



New ES Hidden Valley, JW Grier, Newell



Mountain Island Lake Academy

PROJECT PROGRESS PHOTOS



Mountain Island Lake Academy

PROJECT PROGRESS PHOTOS



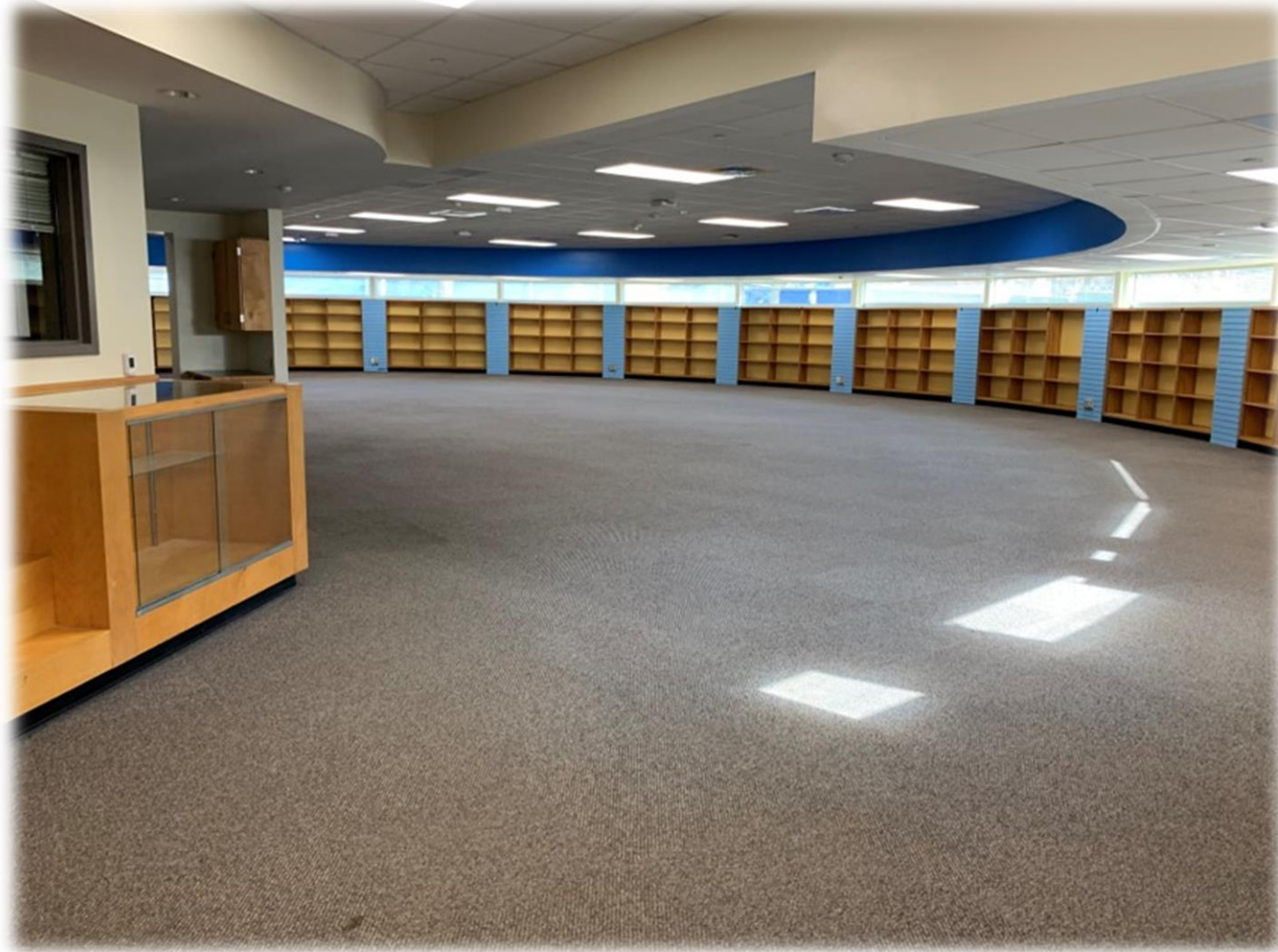
Mountain Island Lake Academy

PROJECT PROGRESS PHOTOS



J.T. Williams

PROJECT PROGRESS PHOTOS



J.T. Williams

PROJECT PROGRESS PHOTOS



Bruns Replacement

PROJECT PROGRESS PHOTOS



Bruns Replacement

PROJECT PROGRESS PHOTOS



West Charlotte HS Phase 2



West Charlotte HS Phase 2

MWSBE PARTICIPATION REPORT

Contract Status Report - MWSBE Participation Commitments

Report Date 4/12/2023

Charlotte-Mecklenburg Schools

4/12/2023 11:05:31 AM

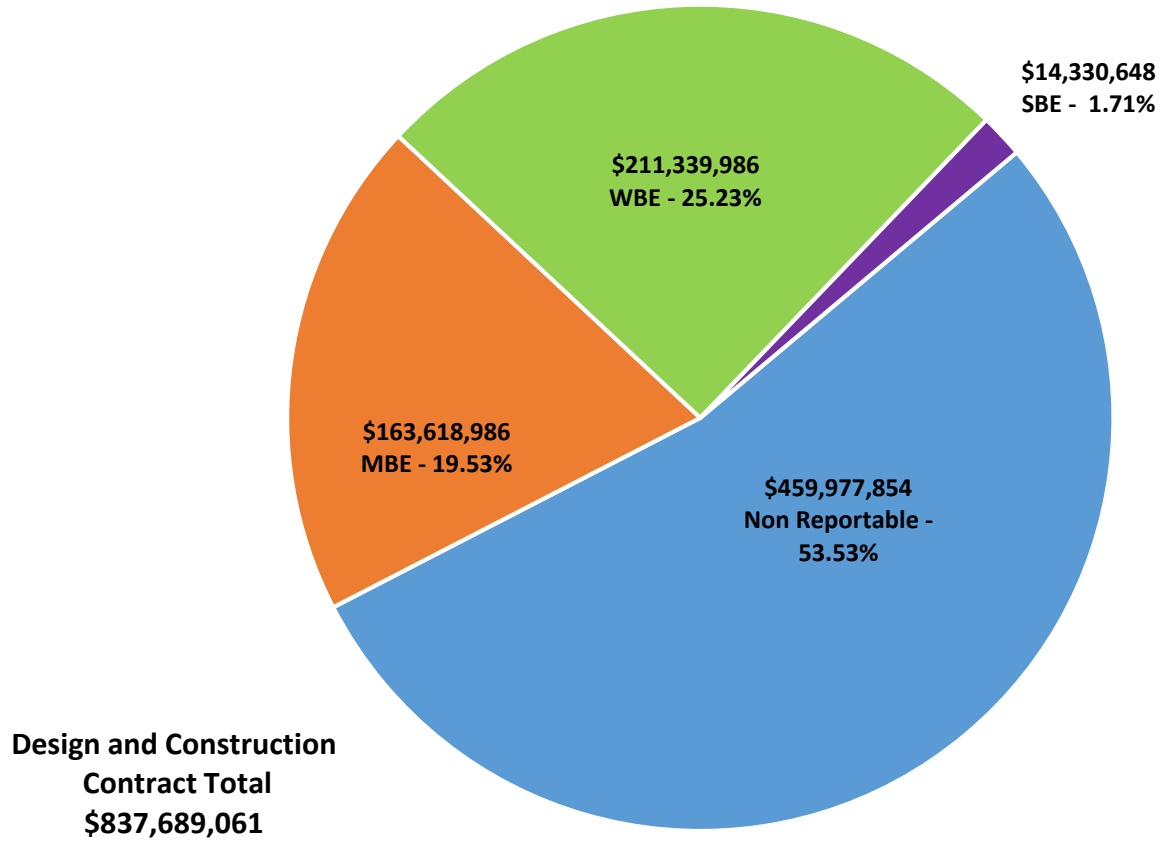
2017 Bond Projects

March 2023 Monthly Bond Report

Facility	Contract Amount	African American MBE\$	%	Other MBE \$	%	Total MBE \$	%	Other WBE \$	%	Other SBE \$	%	Total	%
<u>Briarwood Elementary School (17)</u>	\$28,413,151	\$4,075,384	14.34%	\$2,135,619	7.52%	\$6,211,003	21.86%	\$2,187,249	7.70%	\$187,102	0.66%	\$8,585,354	30.22%
<u>Career and Technology Education (17)</u>	\$5,596,312	\$522,870	9.34%	\$315,278	5.63%	\$838,148	14.98%	\$203,576	3.64%	\$65,475	1.17%	\$1,107,199	19.78%
<u>Charlotte-Mecklenburg Academy (17)</u>	\$17,035,852	\$198,536	1.17%	\$1,029,192	6.04%	\$1,227,728	7.21%	\$928,554	5.45%	\$13,200	0.08%	\$2,169,482	12.73%
<u>Collinswood Language Academy (17)</u>	\$38,527,704	\$649,287	1.69%	\$1,613,103	4.19%	\$2,262,390	5.87%	\$11,362,566	29.49%	\$9,328	0.02%	\$13,634,284	35.39%
<u>E.E. Waddell (17)</u>	\$2,113,673	\$0	0.00%	\$0	0.00%	\$0	0.00%	\$10,950	0.52%	\$0	0.00%	\$10,950	0.52%
<u>East Mecklenburg High School (17)</u>	\$12,670,855	\$603,811	4.77%	\$532,460	4.20%	\$1,136,271	8.97%	\$490,382	3.87%	\$681,075	5.38%	\$2,307,728	18.21%
<u>Garinger High School (17)</u>	\$4,341,746	\$407,299	9.38%	\$1,452,056	33.44%	\$1,859,355	42.83%	\$913,472	21.04%	\$270,990	6.24%	\$3,043,818	70.11%
<u>Harding High School (17)</u>	\$13,015,986	\$1,504,505	11.56%	\$310,356	2.38%	\$1,814,862	13.94%	\$4,010,831	30.81%	\$176	0.00%	\$5,825,869	44.76%
<u>JT Williams (17)</u>	\$15,367,879	\$973,801	6.34%	\$343,427	2.23%	\$1,317,228	8.57%	\$3,638,716	23.68%	\$51,800	0.34%	\$5,007,745	32.59%
<u>Lansdowne Elementary School (17)</u>	\$30,700,612	\$2,631,555	8.57%	\$793,183	2.58%	\$3,424,738	11.16%	\$2,213,177	7.21%	\$223,625	0.73%	\$5,861,539	19.09%
<u>Lincoln Heights Elementary School (17)</u>	\$2,267,313	\$102,289	4.51%	\$18,800	0.83%	\$121,089	5.34%	\$0	0.00%	\$74,503	3.29%	\$195,592	8.63%
<u>Mint Hill Elementary School (17)</u>	\$26,323,261	\$5,223,675	19.84%	\$18,319,957	69.60%	\$23,543,632	89.44%	\$1,201,089	4.56%	\$308,370	1.17%	\$25,053,091	95.17%
<u>Montclair Elementary School (17)</u>	\$26,093,784	\$3,617,952	13.87%	\$2,260,381	8.66%	\$5,878,333	22.53%	\$5,731,016	21.96%	\$517,257	1.98%	\$12,126,605	46.47%
<u>Mountain Island Lake Academy (17)</u>	\$12,499,991	\$156,948	1.26%	\$779,166	6.23%	\$936,114	7.49%	\$918,248	7.35%	\$30,300	0.24%	\$1,884,662	15.08%
<u>New Elementary School (Elon, Hawk)</u>	\$44,181,739	\$5,793,101	13.11%	\$1,016,850	2.30%	\$6,809,951	15.41%	\$8,527,827	19.30%	\$1,299,553	2.94%	\$16,637,331	37.66%
<u>New Elementary School (Hidden Vall)</u>	\$38,657,270	\$5,493,635	14.21%	\$4,211,754	10.90%	\$9,705,389	25.11%	\$2,237,544	5.79%	\$25,600	0.07%	\$11,968,533	30.96%
<u>New Elementary School (Windsor, W)</u>	\$41,205,691	\$8,321,265	20.19%	\$3,827,294	9.29%	\$12,148,559	29.48%	\$26,675,311	64.74%	\$746,064	1.81%	\$39,569,934	96.03%
<u>New High School (South, Ardrey) (17)</u>	\$132,699,876	\$2,642,133	1.99%	\$5,148,531	3.88%	\$7,790,664	5.87%	\$12,997,901	9.79%	\$4,294,119	3.24%	\$25,082,683	18.90%
<u>North Academy of World Languages</u>	\$38,090,783	\$1,688,775	4.43%	\$1,575,863	4.14%	\$3,264,638	8.57%	\$3,471,693	9.11%	\$437,418	1.15%	\$7,173,748	18.83%
<u>Northwest School of the Arts (17)</u>	\$3,639,715	\$0	0.00%	\$37,000	1.02%	\$37,000	1.02%	\$27,850	0.77%	\$0	0.00%	\$64,850	1.78%
<u>Palisades High School (17)</u>	\$98,070,130	\$13,504,638	13.77%	\$7,587,760	7.74%	\$21,092,398	21.51%	\$13,786,630	14.06%	\$2,996,568	3.06%	\$37,875,596	38.62%
<u>Shamrock Gardens Elementary Scho</u>	\$28,035,161	\$2,366,885	8.44%	\$1,472,922	5.25%	\$3,839,807	13.70%	\$23,207,193	82.78%	\$274,496	0.98%	\$27,321,497	97.45%
<u>Sharon Elementary School (17)</u>	\$8,534,491	\$326,844	3.83%	\$283,497	3.32%	\$610,341	7.15%	\$926,873	10.86%	\$217,984	2.55%	\$1,755,197	20.57%
<u>South Academy of International Lang</u>	\$37,073,557	\$6,023,141	16.25%	\$2,431,071	6.56%	\$8,454,212	22.80%	\$10,911,546	29.43%	\$347,799	0.94%	\$19,713,557	53.17%

Facility	Contract Amount	African American MBE\$	%	Other MBE \$	%	Total MBE \$	%	Other WBE \$	%	Other SBE \$	%	Total	%
<u>South Mecklenburg High School (17)</u>	\$1,239,624	\$0	0.00%	\$0	0.00%	\$0	0.00%	\$0	0.00%	\$0	0.00%	\$0	0.00%
<u>South Pine Academy (17)</u>	\$26,161,268	\$916,165	3.50%	\$19,205,893	73.41%	\$20,122,058	76.92%	\$4,342,256	16.60%	\$237,754	0.91%	\$24,702,068	94.42%
<u>West Charlotte High School (17)</u>	\$95,322,244	\$14,362,353	15.07%	\$4,017,514	4.21%	\$18,379,867	19.28%	\$68,353,784	71.71%	\$736,317	0.77%	\$87,469,968	91.76%
<u>West Mecklenburg High School (17)</u>	\$9,809,391	\$283,809	2.89%	\$509,403	5.19%	\$793,212	8.09%	\$2,063,752	21.04%	\$283,775	2.89%	\$3,140,739	32.02%
Grandtotal	\$837,689,061	\$82,390,657	9.84%	\$81,228,329	9.70%	\$163,618,986	19.53%	\$211,339,986	25.23%	\$14,330,648	1.71%	\$389,289,620	46.47%

MWSBE Participation 2017 Bond Projects



PROJECT CONTROLS

**CHARLOTTE-MECKLENBURG BOARD OF EDUCATION
2013 BOND SERIES-CAPITAL IMPROVEMENT PROGRAM
BUDGET STATUS REPORT**

	Original Project Budget	Current Project Budget	Committed Amount	Approved Change Orders	Total Committed	Pending Commitments	To Be Committed	Prev Paid To Date	Paid To Date	Balance To Complete	Monthly Expenditure
	(A)	(B)	(C)	(D)	(E)=C+D	(F)	(G)=(B-E-F)	(H)	(I)	(J)=(B-I)	(K)=(I-H)
<u>A. REPLACEMENT & RENOVATIONS</u>											
1 Career & Technology Education Institutes Phase 1:	\$8,640,000	\$18,697,857	\$6,811,184	\$11,886,477	\$18,697,661	\$0	\$196	\$18,247,882	\$18,455,682	\$242,174	\$207,800
2 Davidson K-8 Conversion	\$9,500,000	\$13,461,149	\$2,131,151	\$11,329,998	\$13,461,149	\$0	\$0	\$13,461,149	\$13,461,149	\$0	\$0
3 J.M. Alexander Middle Replacement	\$30,672,000	\$29,845,539	\$4,502,518	\$25,343,021	\$29,845,539	\$0	\$0	\$29,845,539	\$29,845,539	\$0	\$0
4 Nations Ford Elementary Replacement	\$19,440,000	\$19,231,604	\$3,958,871	\$15,272,733	\$19,231,604	\$0	\$0	\$19,231,604	\$19,231,604	\$0	\$0
5 Northwest School of the Arts	\$12,420,000	\$12,868,718	\$2,047,917	\$10,820,801	\$12,868,718	\$0	\$0	\$12,868,719	\$12,868,719	\$0	\$0
6 Oakhurst STEAM Magnet Elementary/Starmount	\$5,940,000	\$5,407,812	\$3,471,397	\$1,936,415	\$5,407,812	\$0	\$0	\$5,407,812	\$5,407,812	\$0	\$0
7 Pre-K-8 Conversions Phase II: Ashley Park/ Bruns	\$24,732,000	\$19,700,807	\$4,167,671	\$15,533,138	\$19,700,809	\$0	\$0	\$19,700,807	\$19,700,807	\$0	\$0
8 Selwyn Elementary	\$2,592,000	\$4,624,831	\$744,799	\$3,880,032	\$4,624,831	\$0	\$0	\$4,624,831	\$4,624,831	\$0	\$0
9 Statesville Road Elementary	\$20,340,000	\$20,648,509	\$5,081,473	\$15,567,037	\$20,648,509	\$0	\$0	\$20,648,509	\$20,648,509	\$0	\$0
10 West Mecklenburg HS	\$0	\$3,993,543	\$3,993,543	\$0	\$3,993,543	\$0	\$0	\$3,993,543	\$3,993,543	\$0	\$0
Total Replacement & Renovations	\$134,276,000	\$148,480,367	\$36,910,523	\$111,569,652	\$148,480,175	\$0	\$197	\$148,030,394	\$148,238,194	\$242,172	\$207,800
<u>B. RESPONSE TO ENROLLMENT GROWTH</u>											
1 East Mecklenburg High Addition	\$12,744,000	\$12,083,804	\$4,465,200	\$7,618,603	\$12,083,803	\$0	\$0	\$12,083,803	\$12,083,803	\$0	\$0
2 Myers Park High Addition	\$22,248,000	\$11,040,942	\$1,207,493	\$9,833,448	\$11,040,942	\$0	\$0	\$11,040,941	\$11,040,941	\$0	\$0
3 Northridge Middle Addition	\$6,448,000	\$6,366,170	\$2,114,306	\$4,251,865	\$6,366,171	\$0	\$0	\$6,366,171	\$6,366,171	\$0	\$0
4 Olympic High Addition/Renovation	\$8,964,000	\$8,947,310	\$2,002,694	\$6,944,615	\$8,947,310	\$0	\$0	\$8,947,310	\$8,947,310	\$0	\$0
5 South Mecklenburg High Addition	\$18,360,000	\$16,307,355	\$2,922,282	\$13,385,073	\$16,307,355	\$0	\$0	\$16,307,355	\$16,307,355	\$0	\$0
6 Charlotte East Language Academy (FKA -New Lang	\$30,376,000	\$31,387,929	\$5,740,182	\$25,647,747	\$31,387,929	\$0	\$0	\$31,387,929	\$31,387,929	\$0	\$0
7 Rea Farms STEAM Academy	\$31,376,000	\$40,476,000	\$9,077,465	\$29,821,441	\$38,898,906	\$0	\$1,577,094	\$38,898,906	\$38,898,906	\$1,577,094	\$0
8 Renaissance West STEAM Academy (FKA New Pre-	\$30,376,000	\$31,698,952	\$5,667,388	\$26,031,564	\$31,698,952	\$0	\$0	\$31,698,952	\$31,698,952	\$0	\$0
9 New High School - South Meck/Ardrey Kell Relief *	\$0	\$9,278,699	\$9,278,699	\$0	\$9,278,699	\$0	\$0	\$9,278,699	\$9,278,699	\$0	\$0
Total Response to Enrollment Growth	\$160,892,000	\$167,587,161	\$42,475,710	\$123,534,357	\$166,010,067	\$0	\$1,577,094	\$166,010,066	\$166,010,066	\$1,577,095	\$0
<u>C. CONTINGENCY</u>											
	\$0	\$0	\$0	\$0	\$0	\$0	\$0	\$0	\$0	\$0	\$0
Total Contingency	\$0	\$0	\$0	\$0	\$0	\$0	\$0	\$0	\$0	\$0	\$0
TOTAL LOCAL BOND PROGRAM	\$295,168,000	\$316,067,527	\$79,386,233	\$235,104,009	\$314,490,242	\$0	\$1,577,291	\$314,040,460	\$314,248,260	\$1,819,267	\$207,800

Original project estimated costs approved by the Board Of Education on July 23, 2013 and approved by the voters of Mecklenburg County on November 5, 2013.

Note: Mecklenburg County's appropriated interest from COPS to increase funding for the 2013 Bond Program.

**CHARLOTTE-MECKLENBURG BOARD OF EDUCATION
2017 BOND SERIES-CAPITAL IMPROVEMENT PROGRAM
BUDGET STATUS REPORT**

	Original Project Budget	Current Project Budget	Committed Amount	Approved Change Orders	Total Committed	Pending Commitments	To Be Committed	Prev Paid To Date	Paid To Date	Balance To Complete	Monthly Expenditure
	(A)	(B)	(C)	(D)	(E)=C+D	(F)	(G)=(B-E-F)	(H)	(I)	(J)=(B-I)	(K)=(I-H)
<u>A. REPLACEMENT & RENOVATIONS</u>											
1 Briarwood Elementary *	\$29,091,619	\$31,243,066	\$4,730,586	\$26,410,339	\$31,140,925	(\$1,500)	\$103,642	\$31,101,615	\$31,129,457	\$113,609	\$27,842
2 Bruns Academy Replacement	\$34,207,808	\$48,890,679	\$4,192,623	\$42,406,336	\$46,598,959	\$0	\$2,291,720	\$1,844,009	\$1,911,392	\$46,979,288	\$67,383
3 Career & Technology Education Upgrades	\$10,101,734	\$9,659,765	\$2,290,761	\$3,768,875	\$6,059,636	(\$176)	\$3,600,305	\$5,671,428	\$5,681,733	\$3,978,032	\$10,305
4 Collinswood K-8 *	\$44,172,540	\$41,412,015	\$4,927,263	\$36,484,752	\$41,412,015	\$0	\$0	\$41,401,384	\$41,401,384	\$10,631	\$0
5 East Mecklenburg HS	\$12,771,594	\$10,231,911	(\$1,651,251)	\$11,852,489	\$10,201,238	(\$31,000)	\$61,673	\$10,085,792	\$10,085,792	\$146,119	\$0
6 Garinger HS	\$13,936,979	\$5,236,979	\$1,595,078	\$3,560,359	\$5,155,437	\$11,800	\$69,742	\$4,080,903	\$4,107,336	\$1,129,643	\$26,433
7 Harding University High *	\$18,330,263	\$13,747,878	\$2,045,267	\$11,702,610	\$13,747,877	\$0	\$0	\$13,747,877	\$13,747,877	\$0	\$0
8 Charlotte-Mecklenburg Academy (FKA -EC Specialty	\$18,957,960	\$17,699,220	\$2,175,504	\$15,523,717	\$17,699,220	\$0	\$0	\$17,699,220	\$17,699,220	\$0	\$0
9 Lansdowne Elementary	\$29,391,270	\$33,804,188	\$3,982,285	\$29,390,214	\$33,372,499	\$33,075	\$398,615	\$30,733,452	\$30,889,473	\$2,914,715	\$156,021
10 Lincoln Heights Elementary	\$3,740,478	\$4,588,675	\$2,585,648	\$430,318	\$3,015,966	\$397,179	\$1,175,530	\$870,988	\$1,191,843	\$3,396,832	\$320,856
11 Montclair Elementary Replacement *	\$28,559,390	\$28,200,634	\$2,426,761	\$25,773,873	\$28,200,634	\$0	\$0	\$28,200,634	\$28,200,634	\$0	\$0
12 Mountain Island k-8	\$9,218,439	\$13,239,686	\$1,669,438	\$11,418,864	\$13,088,302	\$12,000	\$139,384	\$7,079,405	\$7,879,153	\$5,360,533	\$799,749
13 Northwest School of the Arts	\$17,632,202	\$12,167,000	\$5,114,500	(\$613,656)	\$4,500,844	\$0	\$7,666,156	\$478,449	\$490,614	\$11,676,386	\$12,165
14 Shamrock Gardens Elementary *	\$29,890,351	\$30,784,692	\$3,463,452	\$27,080,324	\$30,543,776	(\$759,395)	\$1,000,311	\$29,162,510	\$29,191,737	\$1,592,955	\$29,227
15 Sharon Elementary	\$7,706,528	\$9,125,862	\$1,430,125	\$7,675,679	\$9,105,804	\$0	\$20,058	\$9,067,791	\$9,067,791	\$58,071	\$0
16 South Mecklenburg HS	\$13,352,143	\$15,622,927	\$1,769,924	\$94,238	\$1,864,162	\$0	\$13,758,765	\$588,376	\$623,063	\$14,999,864	\$34,688
17 E.E. Waddell Magnet HS	\$4,571,709	\$5,137,367	\$2,829,355	\$98,796	\$2,928,151	\$12,000	\$2,197,216	\$1,973,257	\$1,973,257	\$3,164,110	\$0
18 West Charlotte HS Replacement	\$109,977,166	\$104,413,163	\$12,075,366	\$91,586,341	\$103,661,707	\$31,566	\$719,889	\$92,110,660	\$93,940,203	\$10,472,959	\$1,829,544
19 West Mecklenburg HS	\$11,065,440	\$6,259,479	(\$2,371,639)	\$8,631,118	\$6,259,479	\$0	\$0	\$6,260,654	\$6,260,654	\$0	\$0
20 John Taylor Williams	\$13,964,339	\$17,032,600	\$3,588,634	\$12,350,600	\$15,939,234	\$177,268	\$916,099	\$8,545,129	\$8,857,423	\$8,175,177	\$312,294
Total Replacement & Renovations	\$460,639,952	\$458,497,787	\$58,869,680	\$365,626,185	\$424,495,865	(\$117,183)	\$34,119,105	\$340,703,534	\$344,330,040	\$114,167,747	\$3,626,506
<u>B. RESPONSE TO ENROLLMENT GROWTH</u>											
1 South Academy of International Languages	\$45,359,367	\$40,669,909	\$5,953,333	\$34,716,308	\$40,669,641	\$0	\$268	\$40,586,977	\$40,586,734	\$83,175	(\$243)
2 North Academy of World Languages (FKA - New K-8	\$45,359,367	\$41,739,951	\$6,022,055	\$35,717,896	\$41,739,951	\$0	\$0	\$41,742,062	\$41,742,062	\$0	\$0
3 South Pine Academy (FKA - New ES Nations Ford, S	\$29,173,829	\$30,438,977	\$6,793,874	\$23,645,103	\$30,438,977	\$0	\$0	\$30,474,698	\$30,474,698	\$0	\$0
4 Mint Hill Elementary School	\$29,988,332	\$29,671,526	\$3,296,183	\$26,377,557	\$29,673,740	(\$250,000)	\$247,785	\$28,571,508	\$28,641,807	\$1,029,718	\$70,299
5 New Elementary School - Windsor Park Relief *	\$30,422,230	\$45,855,770	\$13,417,060	\$31,456,565	\$44,873,625	\$111,113	\$871,032	\$20,493,465	\$23,508,282	\$22,347,488	\$3,014,818
6 New Elementary School - Elon/Hawk Ridge Relief *	\$30,426,712	\$59,141,761	\$16,565,738	\$42,098,607	\$58,664,345	\$18,400	\$459,015	\$26,733,455	\$28,848,719	\$30,293,042	\$2,115,264
7 New Elementary School - Hidden Valley Relief	\$30,518,345	\$44,079,387	\$6,647,868	\$36,564,145	\$43,212,013	\$0	\$867,375	\$22,733,192	\$24,915,540	\$19,163,848	\$2,182,348
8 Palisades High School	\$109,908,793	\$107,592,534	\$10,940,005	\$96,401,797	\$107,341,802	\$19,742	\$230,990	\$103,826,748	\$104,208,630	\$3,383,904	\$381,882
9 New High School - South Meck/Ardrey Kell Relief *	\$110,287,621	\$160,930,460	\$11,707,995	\$125,664,701	\$137,372,696	\$434,844	\$23,122,920	\$36,759,287	\$40,496,479	\$120,433,981	\$3,737,193
Total Response to Enrollment Growth	\$461,444,596	\$560,120,275	\$81,344,112	\$452,642,678	\$533,986,790	\$334,099	\$25,799,386	\$351,921,392	\$363,422,951	\$196,697,324	\$11,501,560
<u>C. CONTINGENCY</u>											
	\$0	\$0	\$0	\$0	\$0	\$0	\$0	\$0	\$0	\$0	\$0
Total Contingency	\$0	\$0	\$0	\$0	\$0	\$0	\$0	\$0	\$0	\$0	\$0

**CHARLOTTE-MECKLENBURG BOARD OF EDUCATION
2017 BOND SERIES-CAPITAL IMPROVEMENT PROGRAM
BUDGET STATUS REPORT**

	Original Project Budget	Current Project Budget	Committed Amount	Approved Change Orders	Total Committed	Pending Commitments	To Be Committed	Prev Paid To Date	Paid To Date	Balance To Complete	Monthly Expenditure
	(A)	(B)	(C)	(D)	(E)=C+D	(F)	(G)=(B-E-F)	(H)	(I)	(J)=(B-I)	(K)=(I-H)
TOTAL LOCAL BOND PROGRAM	\$922,084,548	\$1,018,618,062	\$140,213,792	\$818,268,863	\$958,482,655	\$216,916	\$59,918,491	\$692,624,926	\$707,752,991	\$310,865,071	\$15,128,065

Original project estimated costs approved by the Board Of Education on July 25, 2017 approved by the voters of Mecklenburg County on November 7, 2017.

*Project included in \$33.2M early funding approved by Board Of Education on August 9, 2016 and Mecklenburg Board of County Commissioners on September 6, 2016. On February 19, 2019 an additional \$8M was approved for New Elementary School - Elon/Hawk Ridge Relief site.

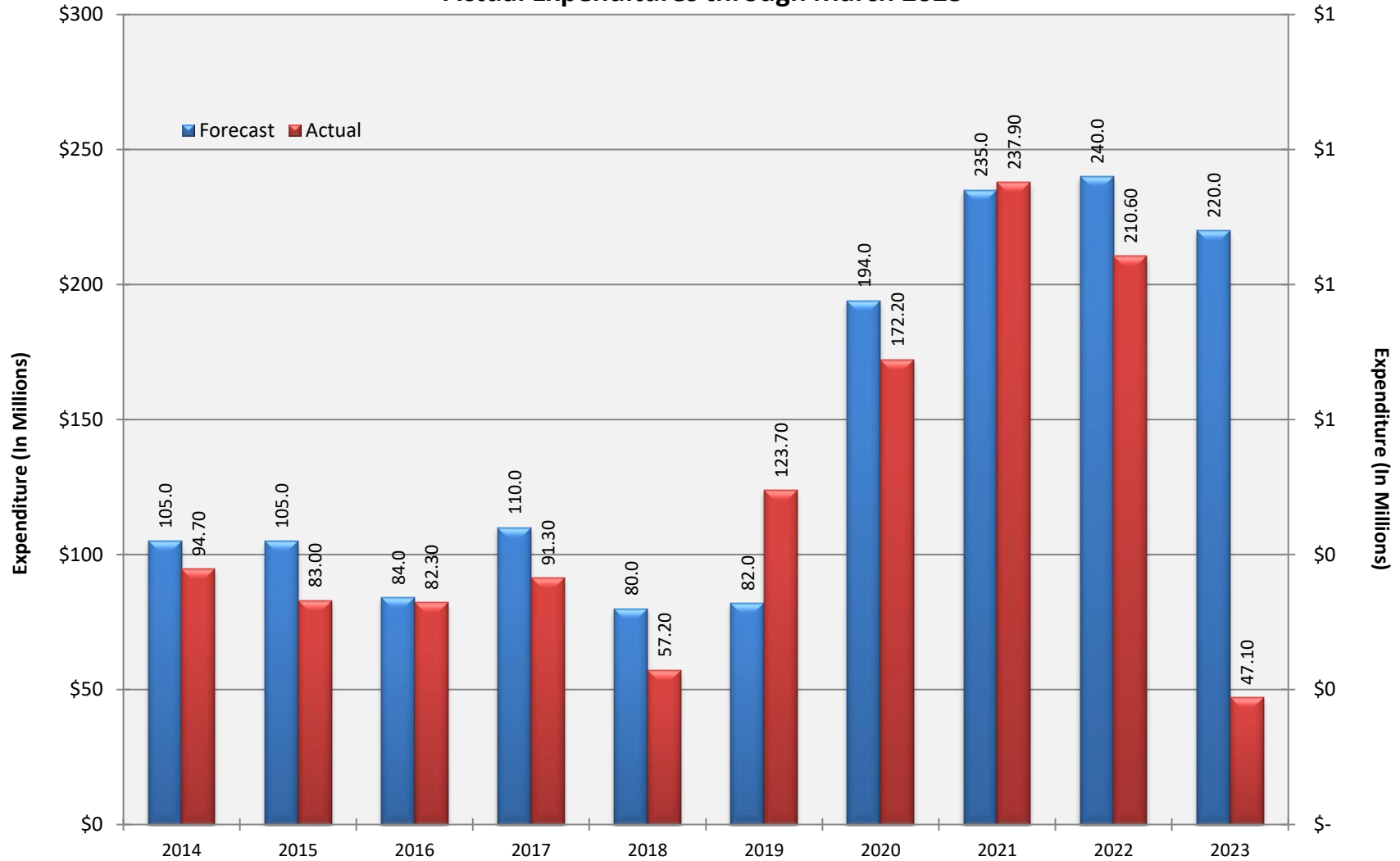
*Current Budget includes an additional \$89.2M to fund increase land and construction costs. The additional funds were approved by the Board of County Commissioners on June 16, 2020.

The New Elementary School - Elon/Hawk Ridge Relief current Budget includes 6.8M for Park and Recreation Project.

Current Budget reflects a reclass of \$7.4M in expenditures to 2007 Bond Program.

10 YEAR EXPENDITURE SUMMARY

Forecast Expenditure versus
Actual Expenditures through March 2023



GLOSSARY

Glossary

- **Project Management** – This section includes updates from our project managers and describes the currently active construction projects. This includes from Board of Education award thru final completion.
- **Design and Bidding** – This section contains updates from our design managers on the projects currently in the design phase. This phase from design award to Board of Education award of construction.
- **Controls** – Section includes misc. updates from controls group including expenditures, related Board of Education awards during the reporting period, cash flow information. This section covers all projects from approved bond through final expenditures and bond close with the county.
- **MWSBE** – Contains updates from the MWSBE Director and team, including current activity and summaries of the participation by MWSBE providers on our program.
- **Bond Progress Summary** – Provides a summary of bond financials including bond value, committed/pending amounts, paid to date, expended this month.
- **Project Procurement Dates** - Next 90 Days major project bid activity.
- **Mobile Swing Space Utilization** – Includes a summary of program related swing space currently in use and the schedule of use.
- **Bond Summary Schedule** – Current program summary schedule including planned design, construction and FF&E. These activities are fed from detailed schedules and are fine-tuned as project information is available.
- **Project Contractor Teams**; Provides summary of turnover dates for completed/closed projects since 2010 including architects/designers and contractors.
- **School Site Location Maps** – General location of bond projects (2017) by type.
- **Project Status Report** – This section of the report provides a summary of the bond project scope, current estimate (all sources), planned occupancy/actual occupancy date. It also provides a current status of the design phase, construction progress and a brief update. The report currently includes 2013 and 2017 bond projects that have or will be completed after to August 2016.
- **MWSBE Participation Report** – The MWSBE report provides a summary of the participation on the 2013 & 2017 Bond funded projects.
- **Project Progress Photos** – Includes photos of active construction projects.
- **Budget Summary Reports** – These reports are by funding source and summarize financial activity to date on the projects. This includes original and current project estimates, committed values, amounts paid to date, balances and monthly expenditures.
- **Change Orders < \$90,000** – This month's approved construction or repair change orders < \$90,000.
- **Expenditure Summary** – Provides a summary of Bond Expenditures by calendar year.