

Capital Improvement Program

Monthly Bond Report
February 2023



New ES (Hidden Valley, JW Grier, Newell)



CAPITAL PROGRAM SERVICES

Capital Improvement Program

FEBRUARY 2023

MONTHLY BOND REPORT

PROGRAM OVERVIEW

- Project Management
- Design and Bidding
- Controls
- MWSBE
- Bond Progress Summary
- Project Procurement - Next 90 Days
- Swing Space Utilization
- Bond Summary Schedule
- Project Contractor Teams; Projects in Design/Construction and Substantially Completed/Closed
- School Site Location Maps
 - Elementary Schools
 - Middle Schools
 - High Schools & Specialty Schools

PROJECT STATUS REPORT

MWSBE PARTICIPATION REPORT

PROJECT PROGRESS PHOTOS

PROJECT CONTROLS

- Budget Summary Reports
 - 2013 Bond Series
 - 2017 Bond Series
- Change Orders < \$90,000
- Expenditure Summary

GLOSSARY

PROGRAM OVERVIEW

PROJECT MANAGEMENT

The following is a summary of the activity on the bond funded projects in construction during the month of February.

The **Bruns ES Replacement** project team mobilized to the site and began the installation of erosion control measures and site fencing. The new building is scheduled for occupancy August of 2024.

The construction manager for the **Garinger Addition and Renovation** project is working to complete commissioning activities for the 300 building renovations. The replacement glass and glazing will continue over the next couple of months. The building was occupied in January 2023.

The construction manager for **JT Williams Secondary Montessori** is finalizing the 100 building. Supply chain issues are affecting delivery of the mechanical roof top units; this in conjunction with the timing of the required fire-line water taps will impact the 100 Building occupancy in early spring. The modular classroom building is nearing completion and is currently scheduled to be available for occupancy in early March. Once occupiable, the 200 Building occupants will swing into the modular classroom building for the remainder of the school year to allow renovations to commence.

The **Lansdowne Elementary School** future playfield is now at grade and finish seed and straw are scheduled to begin as weather permits. The site landscaping including trees and shrubs is underway. The new playgrounds have been delivered and composite units are installed. Drainage stone and mulch to follow. The site work will be substantially completed in March.

The **Lincoln Heights** repurpose project renovations on the second floor continued this month, next month the work will move to the first floor. In addition, the design and construction teams are coordinating the additional work related to the Trillium Montessori program into the project. The building is scheduled for occupancy August 2023.

The **Mountain Island Lake Academy Gym/Classroom Addition** construction manager continued interior rough-in work throughout the building. The roofer mobilized and began the installation of the gym roof system. The mason continued with brick veneer installations. The new building is scheduled for occupancy August 2023.

The **New Elementary School (Elon, Hawk Ridge, Polo Relief)** construction manager continued to manage multiple trades through the project. The mason completed the load bearing masonry for stairwell B and the firewall. The steel contractor completed the Building B steel. Work continues with Building A structural steel installations. The site contractor final graded the bus lot and installed the stone base. The recreation center mason continued with load bearing installations. The project team continues to mitigate the impacts from the later and anticipated receipt of permits, masonry delays and potential supply chain issues. The road procurement package has been revised and was rebid this month. The new 45-classroom elementary school is located across from the Ardrey Kell High School and is scheduled for occupancy August 2024.

The **New Elementary School (Hidden Valley, JW Grier, Newell Relief)** construction manager has started grading work around the building to control storm water where brick veneer and windows are complete. Drywall installation and finishing has started throughout. Some areas have received primer and finish paint. Ceramic tile installation is ongoing in bathrooms and wet areas. Due to extended Charlotte Water lead times the installation for the new water tap is now scheduled in late spring, the team continues to work through this and supply chain material delivery issues. This new 45-classroom school will be located next to Northridge Middle School and is scheduled for occupancy August 2023.

The **New Elementary School (Windsor Park, Winterfield, Idlewild Relief)** construction manager continues with site work including segmental retaining walls, backfill and bringing areas to final grade. Brick veneer is currently

being installed around the building. Single ply roof membrane has progressed, and most areas now have the roof dried in. The mechanical, electrical and plumbing contractors are completing in wall rough ins. Drywall has started in administrative and classrooms. This new 45-classroom school is currently scheduled for occupancy August 2023.

The **New High School (South, Ardrey Relief)** construction manager continued with footings, below grade masonry installations in addition to load bearing masonry throughout the building. Below slab electrical and plumbing rough-ins continue along with slab prep. The mason continues with the installation of CMU walls in the band room and auditorium. Site work is ongoing including sanitary, storm installations and retaining walls throughout the site. The concrete retaining wall at the bottomless culvert and the stream crossing work began and will continue into next month. The new 100-classroom relief high school is scheduled for occupancy August 2024.

The **West Charlotte High School** construction manager continues to work on the phase two (demolition/sitework) phase of the project. Site grading continues as areas for parking lots and future ball fields are balanced. Cast in place retaining walls are being formed and poured. The north parking lot is now on grade and stone base will start soon. The concessions and bathroom building for baseball/softball is underway. The team continues to coordinate the project with school administration. The demolition/and sitework phase is scheduled for completion in August 2023.

DESIGN AND BIDDING

The following is a summary of the activity on the bond funded projects in design and bidding phase during the month of February.

The **Northwest School of the Arts** project has received schematic design documents for phases 1 and 2. The phase 1 design scope includes the underground stormwater detention system and expansion of the car parking lot in preparation of the phase 2 new classroom building that will replace the existing visual arts Building B and Building D and other site improvements. The project will be completed in multiple phases; the car parking modifications are scheduled to begin in the fall of 2023.

The **South Mecklenburg High School Addition** project has received the 95% construction documents for final review comments. The project consists of a 3-story classroom addition providing 19 classrooms that support core curriculum subjects, CTE program, visual arts and the JROTC program. Mobiles will be relocated the summer 2023 to allow construction of the new building to begin in the fall of 2023 and be available for occupancy January 2025.

CONTROLS

Expenditures for the month of February were \$16M. This brings our fiscal year to date total to \$130.1M against the 2023 fiscal year cash flow projection of \$230M. The Controls team continues the reconciliation and closeout of completed 2013 and 2017 bond projects. Available funding identified from completed purchase orders reviewed and reconciliations are being accumulated to be used for future capital needs.

Board of Education approval was received on February 28, 2023 for the Phase Two Construction of Bruns Elementary Replacement School Project.

The Controls team continues to submit notices of potential changes at school sites so senior staff can adequately evaluate any issues. Additionally, the Controls team continues the processing of contracts, invoices, preparing notices of potential change, change orders, pay applications, and check requests for projects under construction. Captured construction cost data is used to prepare financial reports such as detailed cost reports, budget summaries, reconciliation to CMS books, revisions to and updated cash flows and complete special financial requests by CMS

and Mecklenburg County. This process, along with data compilation and management, allows senior staff to provide the proper guidance/direction and accurate information to the program stakeholder.

MWSBE

As of February 2023, the overall MWSBE utilization percentage related to design and construction of the 2017 bond projects is 45.08% which includes 18.58% participation by minority contractors, 24.89% by women contractors and 1.60% participation by small business contractors. This accounts for more than \$377 million of utilization by Minority, Women and Small Business Contractors.

The Diversity & Inclusion Office of Charlotte-Mecklenburg Schools continued to conduct several individual virtual orientations with new MWSBE contractors and prime contractors. In addition, team members also attended/hosted the following outreach sessions/pre-bid meetings and/or workforce development opportunities:

Outreach Sessions:

- Elon Relief Roadwork outreach hosted by Balfour Beatty
- Carolinas-Virginia Minority Supplier Development Council Annual Meeting and ProForum
- Supplier Diversity Roundtable
- Charlotte MED Week 2023 Planning

Over the next month, team members will continue to work with contractors interested in bidding on the upcoming school projects utilizing various virtual tools to communicate. Contractors are encouraged to review bid advertisements in Charlotte Observer and register as a vendor on the North Carolina Interactive Purchasing System for notification of the various opportunities.

BOND PROGRESS SUMMARY As of February 2023

| Funding Source and Value | | Amount Committed/Pending | Amount Paid to Date | Amount Expended This Period |
|--------------------------|------------------------|--------------------------|----------------------|-----------------------------|
| '13 Bond | \$316,067,527 | \$314,487,141 | \$313,982,268 | \$481,968 |
| '17 Bond | \$1,018,618,062 | \$940,590,756 | \$676,662,083 | \$15,295,496 |
| Grand Total | \$1,334,685,589 | \$1,255,077,897 | \$990,644,351 | \$15,777,464 |

UPCOMING MAJOR CONSTRUCTION PROCUREMENT DATES *Three Month Look Ahead*

School Name

Bid Dates*

South Mecklenburg Phase I
Managed by CM (Balfour Beatty)

May 2023

Northwest School of the Arts Phase I
Managed by CM (Balfour Beatty)

May 2023

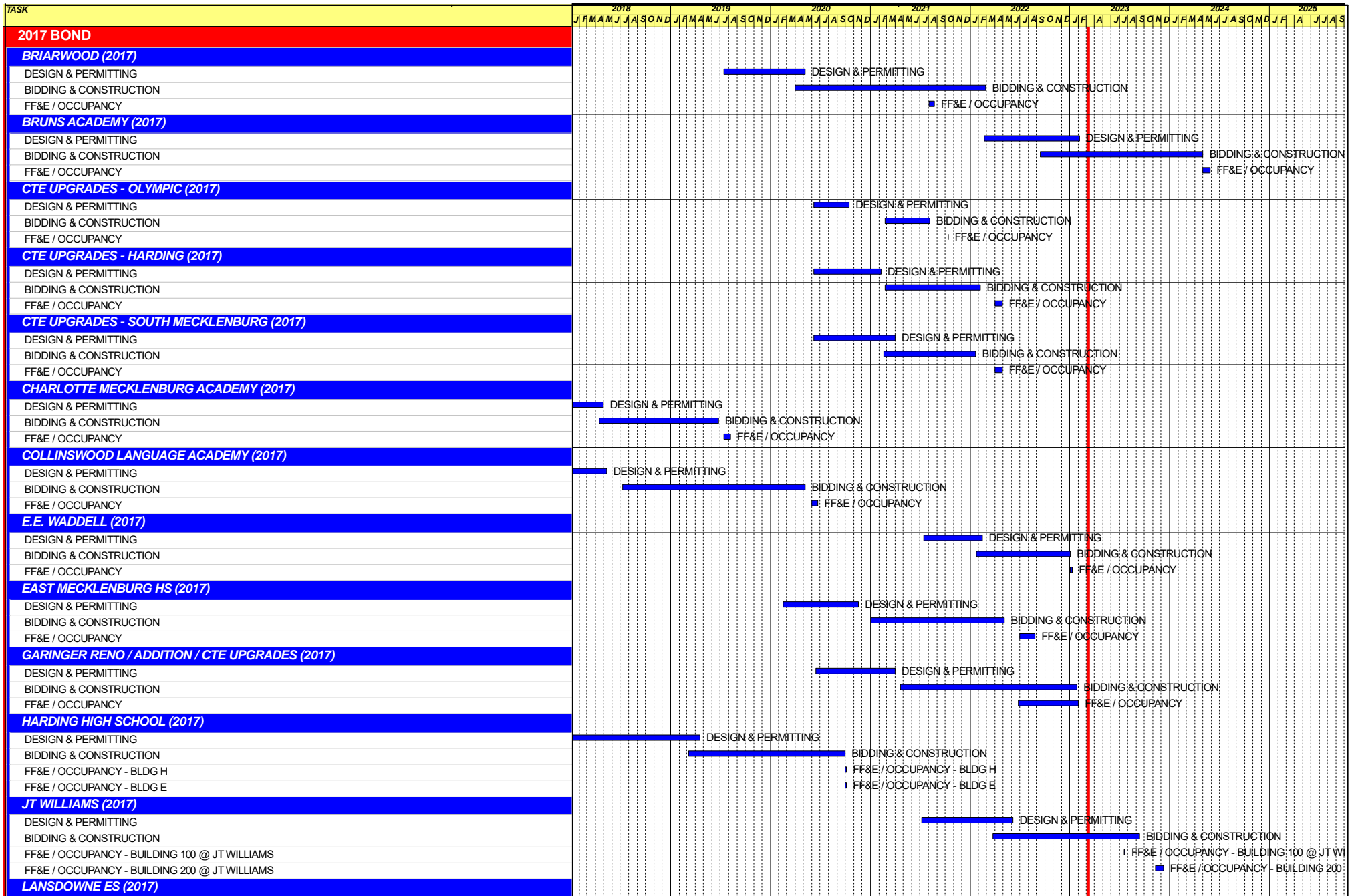
** NOTE: Work In Progress...Dates Subject to Change.*

SWING SPACE UTILIZATION

Creating a temporary space for students and staff to occupy during construction on a school’s campus has proven to be beneficial to the project’s schedule and cost and overall safety and efficiency of school operations. When the renovation or expansion of a facility is performed and the facility must remain functionally operational, there are benefits to the owner in using swing space.

We have successfully utilized both onsite and offsite swings. The most desirable swings are “offsite” ones. Onsite swing using mobiles or modulars, likewise has been successfully used. The following is a summary of current swing options planned or in use.

| <u>School</u> | <u>No. of Mobiles/Relocation Site</u> | <u>Status (From – To)</u> |
|---------------|---------------------------------------|---------------------------|
| J.T. Williams | 10-classroom modular | March 2023 – TBD |










Capital Improvements Program
Projects in Design or Under Construction

| School | Architect | General Contractor/CM |
|---|----------------------|-----------------------|
| Projects In Design | | |
| Northwest School of the Arts Addition (17) | LS3P | Balfour Beatty |
| South Mecklenburg High School Addition (17) | Morris Berg | Balfour Beatty |
| Projects in Bid/Award/Construction Phase | | |
| New Bruns Avenue ES (17) | ADW | Edifice, Inc. |
| E.E. Waddell (17) | Moseley | Randolph & Sons |
| Garinger Addition/Renovation & CTE (17) | LS3P | Balfour Beatty |
| J.T. Williams (17) | FWA | New Atlantic |
| Lansdowne Elementary School Replacement (17) | Perkins Eastman | Edifice, Inc. |
| Lincoln Heights Repurpose (17) | Neighboring Concepts | Randolph & Sons |
| Mountain Island School (17) | ADW | Whiting-Turner |
| New ES (Elon,Hawk Ridge, Polo Ridge) (17) | Little Diversified | Balfour Beatty |
| New ES (Hidden Valley, JW Grier, Newell) (17) | ADW | Edifice, Inc. |
| New ES (Windsor, Winterfield, Idlewild) (17) | Neighboring Concepts | Rodgers-Holt Brothers |
| New HS (South, Ardrey) (17) | Ratio | Messer |
| West Charlotte High School (17) | LS3P | Rodgers-Holt Brothers |

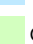


Capital Improvements Program
Projects Substantially Completed/Closed *

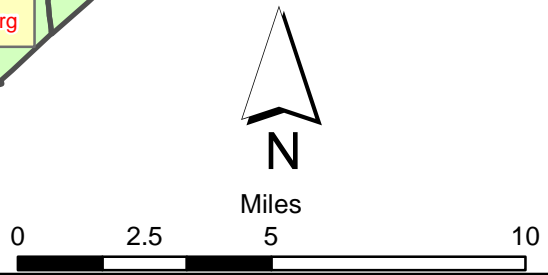
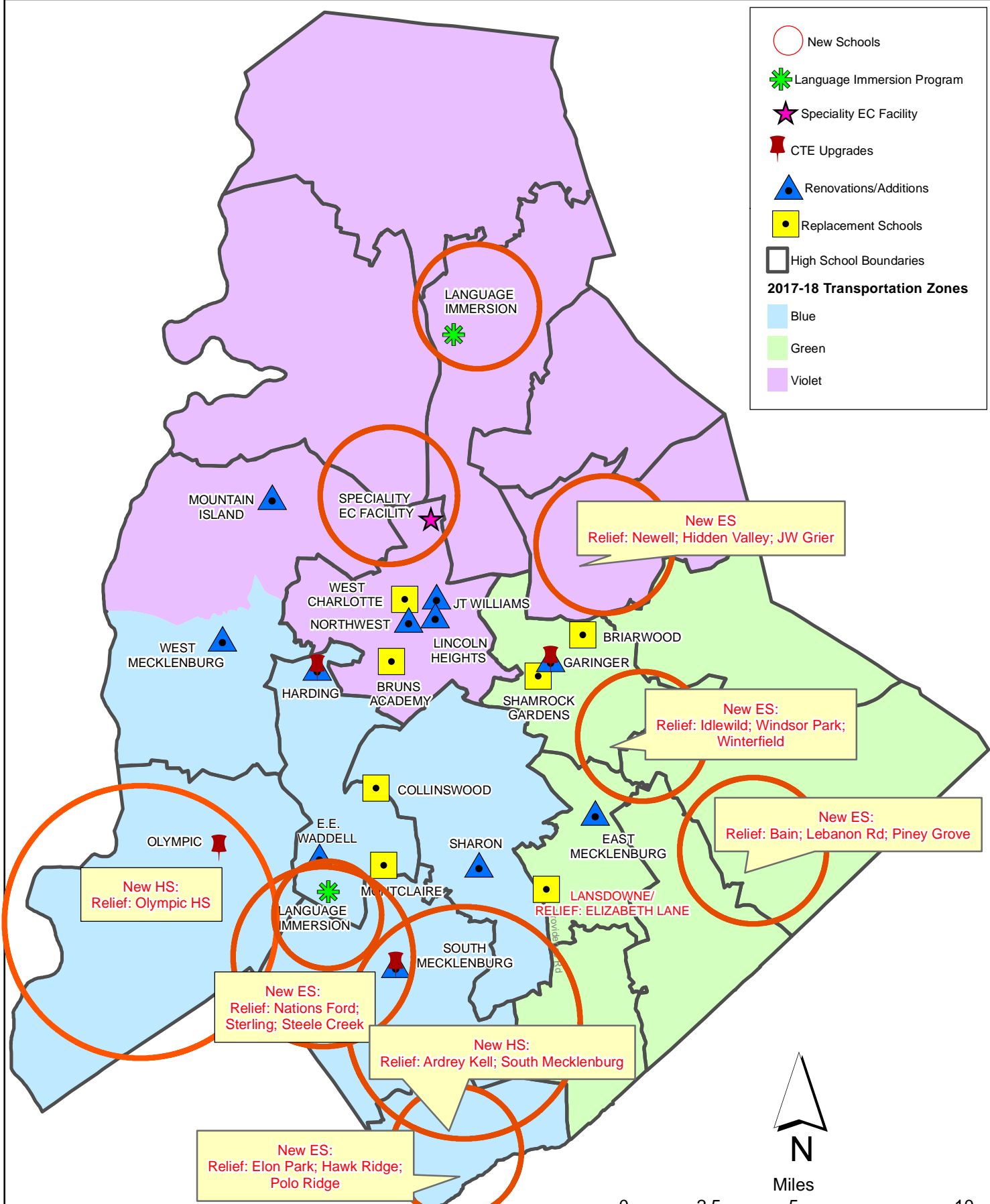
| School | Turnover Year | Architect | General Contractor |
|--|---------------|------------------------------|---------------------------------|
| Palisades High School (Olympic Relief) (17) | Aug-22 | Little Diversified | Edifice, Inc. |
| Shamrock Gardens Elementary School Replacement (17) | Aug-22 | Little Diversified | Rodgers/Holt Brothers |
| Mint Hill ES (17) <i>(fka Bain, Lebanon Rd, Piney Grove)</i> | Aug-22 | FWA | Metcon |
| East Mecklenburg High School (17) | May-22 | Morris Berg | Turner Construction |
| CTE (Harding, Olympic, South) (17) | Jan-22 | MPS | Branch Brownstone |
| Briarwood Elementary School Replacement (17) | Aug-21 | ADW | New Atlantic Contracting |
| Montclair Elementary School (17) | Aug-21 | WHN | Messer Construction |
| North Academy of World Languages (17) | Aug-21 | ADW | New Atlantic Contracting |
| Sharon Elementary School (17) | Aug-21 | Clark Nexsen | Samet |
| South Academy of International Languages (17) | Aug-21 | FWA | Messer Construction |
| South Pine Academy (17) | Aug-21 | FWA | Metcon |
| West Mecklenburg Gym (17) | Aug-21 | Moseley | Barnhill/D.A. Everett |
| Collinswood Language Academy (17) | Aug-20 | Perkins Eastman | Turner Construction |
| Harding High School Renovation (17) | Aug-20 | SFLA | Barnhill Contracting |
| Rea Farms STEAM Academy (13) | Aug-20 | Little Diversified | Balfour Beatty |
| Ashley Park K-8 Conversion (13) | Aug-19 | ADW | Turner Construction |
| Druid Hills K-8 Conversion (13) | Aug-19 | ADW | Edifice, Inc. |
| Selwyn Elementary (13) | Aug-19 | Clark Nexsen | Balfour Beatty |
| Charlotte Mecklenburg Academy (17) | Aug-19 | KSQ | Edifice, Inc. |
| Davidson K-8 (13) | Aug-19 | Little Diversified | Gilbane |
| CTE - North Mecklenburg High (13) | Aug-19 | LS3P | Shiel Sexton |
| CTE - Garinger (13) | Mar-19 | LS3P | Hostetter & Son |
| CTE - Independence (13) | Mar-19 | LS3P | D.E. Brown |
| CTE - West Mecklenburg (13) | Mar-19 | LS3P | Hostetter & Son |
| Charlotte East Language Academy (13) | Aug-18 | Morris Berg | Edifice, Inc |
| Myers Park High School Phase 3 (13) | Aug-18 | Boomerang Design | BE&K |
| Northridge Middle (13) | Aug-18 | Morris Berg | Barnhill Contracting |
| Myers Park High Bldg 2 (13) | Feb-18 | Boomerang Design | BE&K |
| East Mecklenburg High Addition (13) | Jan-18 | Bergman (fna Gantt Huberman) | Edifice, Inc. |
| J.M. Alexander Middle (13) | Aug-17 | FWA Group | Balfour Beatty |
| Northwest School of the Arts Renovation (13) | Aug-17 | Moseley | Turner Construction |
| Renaissance West STEAM Academy (13) | Aug-17 | Little Diversified | Rodgers Construction |
| South Mecklenburg High Addition (13) | Jul-17 | SFLA | Barnhill Contracting |
| Myers Park High Bldg 1 (13) | Sep-16 | Boomerang | KBR |
| Statesville Road Elementary (13) | Aug-16 | ADW | JE Dunn |
| Nations Ford Elementary (13) | Aug-16 | Wash Hatem Nelson | Messer Construction |
| Olympic High Addition (13) | Aug-16 | McMillan, Pazdan, Smith | Turner Construction |
| Lawrence Orr Elementary (07) | Aug-15 | Cort Architectural Group | DH Griffin/Metcon |
| Parkside Elementary (07) | Aug-15 | Wash Hatem Nelson | Clancy & Theys |
| Hawthorne High Renovations (07) | Aug-15 | Morris-Berg | Balfour Beatty |
| Newell Elementary (07) | Aug-15 | Perkins Eastman | New Atlantic Contracting |
| Ranson Middle (07) | Aug-15 | Morris-Berg | Edifice, Inc. |
| Vance High | Jan-15 | LS3P | Matthews Construction Co., Inc. |
| Garinger High - Renovations/Addition | Aug-14 | Adams Group Architects | Turner Construction |
| Olympic High - Stadium | Aug-14 | Site Solutions | Turner Construction |
| West Mecklenburg High - Stadium | Aug-14 | Site Solutions | Turner Construction |
| Collinswood - Indoor Air Quality | Aug-14 | PEA | The Bowers Group |
| Lansdowne - Indoor Air Quality | Aug-14 | AeroRaq | Tyler 2 |
| McKee Road - Indoor Air Quality | Aug-14 | McCracken & Lopez | Godfrey Construction |
| Garinger High - Track & Field | Jul-14 | Site Solutions | Turner Construction |
| Independence High - Gym | Jun-14 | Shook Kelly | Shelco, Inc. (CM) |
| Palisades Park Elementary | May-14 | Wash Hatem Nelson | Clancy & Theys |
| East Mecklenburg High Auditorium | Jan-14 | Gantt Huberman Associates | Godfrey Construction Co., Inc. |

CMS Capital Improvement Plan 2017 Bond Projects

-  New Schools
-  Language Immersion Program
-  Speciality EC Facility
-  CTE Upgrades
-  Renovations/Additions
-  Replacement Schools
-  High School Boundaries

2017-18 Transportation Zones

-  Blue
-  Green
-  Violet



PROJECT STATUS REPORT



Monthly Project Status 2017 Bond Summary February 2023

| Project | Current Project Estimate | Project Scope | ** Occupy On | Design Phase | Construction Progress | Project Status |
|--------------------------------------|--------------------------|---|--------------|--------------|-----------------------|---|
| Briarwood Elementary School (17) | \$ 31,243,066 | 45-classroom replacement facility; replaces school built in 1956. | August 2021 | Complete | 100 % | Project is complete. |
| Bruns Avenue Elementary School (17) | \$ 48,890,679 | New 45-classroom elementary school (K-5); replaces old school built in 1969. | August 2024 | Complete | 1 % | The Bruns ES Replacement project team mobilized to the site and began the installation of erosion control measures and site fencing. |
| Career and Technology Education (17) | \$ 9,659,765 | Phase I CTE upgrades at Olympic, Harding, Garinger and South Mecklenburg. | January 2022 | Complete | 100 % | Project is complete. |
| Charlotte-Mecklenburg Academy (17) | \$ 17,699,220 | New EC school located on the old Statesville Elementary School site. | August 2019 | Complete | 100 % | Project is complete. |
| Collinswood Language Academy (17) | \$ 41,412,015 | New 63-classroom K-8 facility on the site of the Smith Family Center. | August 2020 | Complete | 100 % | Project is complete. |
| E.E. Waddell (17) | \$ 5,137,367 | Repurpose current E.E. Waddell to reopen as a magnet high school. | August 2023 | Complete | 99 % | The contractor for E.E. Waddell has completed the renovations. The project is now in closeout. |
| East Mecklenburg High School (17) | \$ 10,231,911 | This project will provide for the design, and construction of a new 30 classroom building. | August 2022 | Complete | 99 % | The East Mecklenburg High School new classroom building was occupied in August. The project is now in the closeout phase. |
| Garinger High School (17) | \$ 5,236,979 | Project includes the design and construction for renovations of 300 building and a new 16 classroom building. | January 2023 | Complete | 98 % | The construction manager for the Garinger Addition and Renovation project is working to complete commissioning activities for the 300 building renovations. The replacement glass and glazing will continue over the next couple of months. The building was occupied in January 2023 |
| Harding High School (17) | \$ 13,747,878 | Renovation of the kitchen, cafeteria, existing gym (aux) and the addition of a new gym. | August 2020 | Complete | 100 % | Project is complete. |

Monthly Project Status

2017 Bond Summary

February 2023

| Project | Current Project Estimate | Project Scope | ** Occupy On | Design Phase | Construction Progress | Project Status |
|--|--------------------------|---|--------------|--------------|-----------------------|---|
| JT Williams (17) | \$ 17,032,600 | Project includes building renovations to J.T. Williams Montessori magnet. | August 2024 | Complete | 59 % | The construction manager for JT Williams Secondary Montessori is finalizing the 100 building. Supply chain issues are affecting delivery of the mechanical roof top units; this in conjunction with the timing of the required fire-line water taps will impact the 100 Building occupancy in early spring. The modular classroom building is nearing completion and is currently scheduled to be available for occupancy in early March. Once occupiable, the 200 Building occupants will swing into the modular classroom building for the remainder of the school year to allow renovations to commence. |
| Lansdowne Elementary School (17) | \$ 33,804,188 | New 45-classroom school; replaces old school built in 1959 and relieve crowding at Elizabeth Lane ES. | August 2022 | Complete | 97 % | The Lansdowne Elementary School future playfield is now at grade and finish seed and straw are scheduled to begin as weather permits. The site landscaping including trees and shrubs is underway. The new playgrounds have been delivered and composite units are installed. Drainage stone and mulch to follow. The site work will be substantially completed in March. |
| Lincoln Heights Elementary School (17) | \$ 4,588,675 | Repurpose and reopen as magnet school. | August 2023 | Complete | 49 % | The Lincoln Heights repurpose project renovations on the second floor continued this month, next month the work will move to the first floor. In addition, the design and construction teams are coordinating the additional work related to the Trillium Montessori program into the project. |
| Mint Hill Elementary School (17) | \$ 29,671,526 | New 45-classroom elementary school; relieves crowding at Bain, Lebanon Road, Piney Grove. | August 2022 | Complete | 99 % | The Mint Hill Elementary School project has moved into the closeout phase. The new signal at the entrance to the schools is currently scheduled to occur spring/summer 2023. |
| Montclair Elementary School (17) | \$ 28,200,634 | New 45-classroom replacement facility replacing school built in 1958. | August 2020 | Complete | 100 % | Project is complete. |
| Mountain Island Lake Academy (17) | \$ 13,239,686 | K-8 Phase 2 - New gymnasium and specialty classrooms. | August 2023 | Complete | 63 % | The Mountain Island Lake Academy Gym/Classroom Addition construction manager continued interior rough-in work throughout the building. The roofer mobilized and began the installation of the gym roof system. The mason continued with brick veneer installations. |

Monthly Project Status

2017 Bond Summary

February 2023

| Project | Current Project Estimate | Project Scope | ** Occupy On | Design Phase | Construction Progress | Project Status |
|--|--------------------------|---|--------------|--------------|-----------------------|--|
| New Elementary School (Elon, Hawk Ridge, Polo Relief) (17) | \$ 59,141,760 | New 45-classroom elementary school to relieve Elon, Hawk Ridge, Polo. | August 2024 | Complete | 21 % | The New Elementary School (Elon, Hawk Ridge, Polo Relief) construction manager continued to manage multiple trades through the project. The mason completed the load bearing masonry for stairwell B and the firewall. The steel contractor completed the Building B steel. Work continues with Building A structural steel installations. The site contractor final graded the bus lot and installed the stone base. The recreation center mason continued with load bearing installations. The project team continues to mitigate the impacts from the later and anticipated receipt of permits, masonry delays and potential supply chain issues. The road procurement package has been revised and was rebid this month. |
| New Elementary School (Hidden Valley, JW Grier, Newell) (17) | \$ 44,079,387 | New 45-classroom elementary school; relieves overcrowding at Hidden Valley, J.W. Grier, Newell. | August 2023 | Complete | 63 % | The New Elementary School (Hidden Valley, JW Grier, Newell Relief) construction manager has started grading work around the building to control storm water where brick veneer and windows are complete. Drywall installation and finishing has started throughout. Some areas have received primer and finish paint. Ceramic tile installation is ongoing in bathrooms and wet areas. Due to extended Charlotte Water lead times the installation for the new water tap is now scheduled in late spring, the team continues to work through this and supply chain material delivery issues. |
| New Elementary School (Windsor, Winterfield, Idlewild Relief) (17) | \$ 45,855,770 | New 45-classroom elementary school to relieve Windsor, Winterfield, and Idlewild ES. | August 2023 | Complete | 53 % | The New Elementary School (Windsor Park, Winterfield, Idlewild Relief) construction manager continues with site work including segmental retaining walls, backfill and bringing areas to final grade. Brick veneer is currently being installed around the building. Single ply roof membrane has progressed, and most areas now have the roof dried in. The mechanical, electrical and plumbing contractors are completing in wall rough ins. Drywall has started in administrative and classrooms. |
| | | | | | | |

Monthly Project Status

2017 Bond Summary

February 2023

| Project | Current Project Estimate | Project Scope | ** Occupy On | Design Phase | Construction Progress | Project Status |
|---|--------------------------|--|--------------|--------------|-----------------------|--|
| New High School (South, Ardrey) (17) | \$ 160,930,460 | New 100 classroom high school to relieve South Mecklenburg, Ardrey Kell and Myers Park HS. | August 2024 | Complete | 28 % | The New High School (South, Ardrey Relief) construction manager continued with footings, below grade masonry installations in addition to load bearing masonry throughout the building. Below slab electrical and plumbing rough- ins continue along with slab prep. The mason continues with the installation of CMU walls in the band room and auditorium. Site work is ongoing including sanitary, storm installations and retaining walls throughout the site. The concrete retaining wall at the bottomless culvert and the stream crossing work began and will continue into next month. |
| North Academy of World Languages (17) | \$ 41,739,951 | New 66 classroom K-8 Language Immersion facility located on the old J.M. Alexander Middle School site. | August 2021 | Complete | 100 % | Project is complete. |
| Northwest School of the Arts (17) | \$ 12,167,000 | Replace classroom buildings B&D and build classroom addition that supports program. 1st phase includes parking and U/G stormwater. | January 2025 | Schematic | 0 % | The Northwest School of the Arts project has received schematic design documents for phases 1 and 2. The phase 1 design scope includes the underground stormwater detention system and expansion of the car parking lot in preparation of the phase 2 new classroom building that will replace the existing visual arts Building B and Building D and other site improvements. The project will be completed in multiple phases; the car parking modifications are scheduled to begin in the fall of 2023. |
| Palisades High School (17) | \$ 107,592,534 | New 100 classroom high school; relieves crowding at Olympic High School. | August 2022 | Complete | 99 % | The Palisades High School (fka New High School Olympic Relief) has been occupied by staff and students. The construction manager is in the closeout phase and is working with trade contractors to complete punch list and open issues. |
| Shamrock Gardens Elementary School (17) | \$ 30,784,692 | New 45-classroom replacement facility. | August 2022 | Complete | 100 % | Project is complete. |
| Sharon Elementary School (17) | \$ 9,125,862 | Add 16 classroom building and increase capacity of cafeteria. | August 2021 | Complete | 100 % | Project is complete. |
| | | | | | | |

Monthly Project Status

2017 Bond Summary

February 2023

| Project | Current Project Estimate | Project Scope | ** Occupy On | Design Phase | Construction Progress | Project Status |
|---|--------------------------|--|--------------|------------------------|-----------------------|---|
| South Academy of International Languages (fka New K-8 School (South) (17) | \$ 40,669,909 | New 71 classroom K-8 Language Immersion facility located on the old Nations Ford Elementary School site. | August 2021 | Complete | 100 % | Project is complete. |
| South Mecklenburg High School (17) | \$ 15,622,927 | Renovate/replace two classroom buildings built in 1958 to upgrade learning conditions. | January 2025 | Construction Documents | 0 % | The South Mecklenburg High School Addition project has received the 95% construction documents for final review comments. The project consists of a 3-story classroom addition providing 19 classrooms that support core curriculum subjects, CTE program, visual arts and the JROTC program. Mobiles will be relocated the summer 2023 to allow construction of the new building to begin in the fall of 2023 and be available for occupancy January 2025. |
| South Pine Academy (17) | \$ 30,438,977 | New 45-classroom elementary school to relieve Nations Ford, Sterling, and Steele Creek. | August 2021 | Complete | 100 % | Project is complete. |
| West Charlotte High School (17) | \$ 104,413,163 | New 100 classroom school to replace current facility built in 1954. | August 2022 | Complete | 93 % | The West Charlotte High School construction manager continues to work on the phase two (demolition/sitework) phase of the project. Site grading continues as areas for parking lots and future ball fields are balanced. Cast in place retaining walls are being formed and poured. The north parking lot is now on grade and stone base will start soon. The concessions and bathroom building for baseball/softball is underway. The team continues to coordinate the project with school administration. |
| West Mecklenburg High School (17) | \$ 6,259,479 | Provide new gymnasium, the existing gymnasium will become the auxilliary. | August 2021 | Complete | 100 % | Project is complete. |

MONTHLY PROJECT PHOTOS



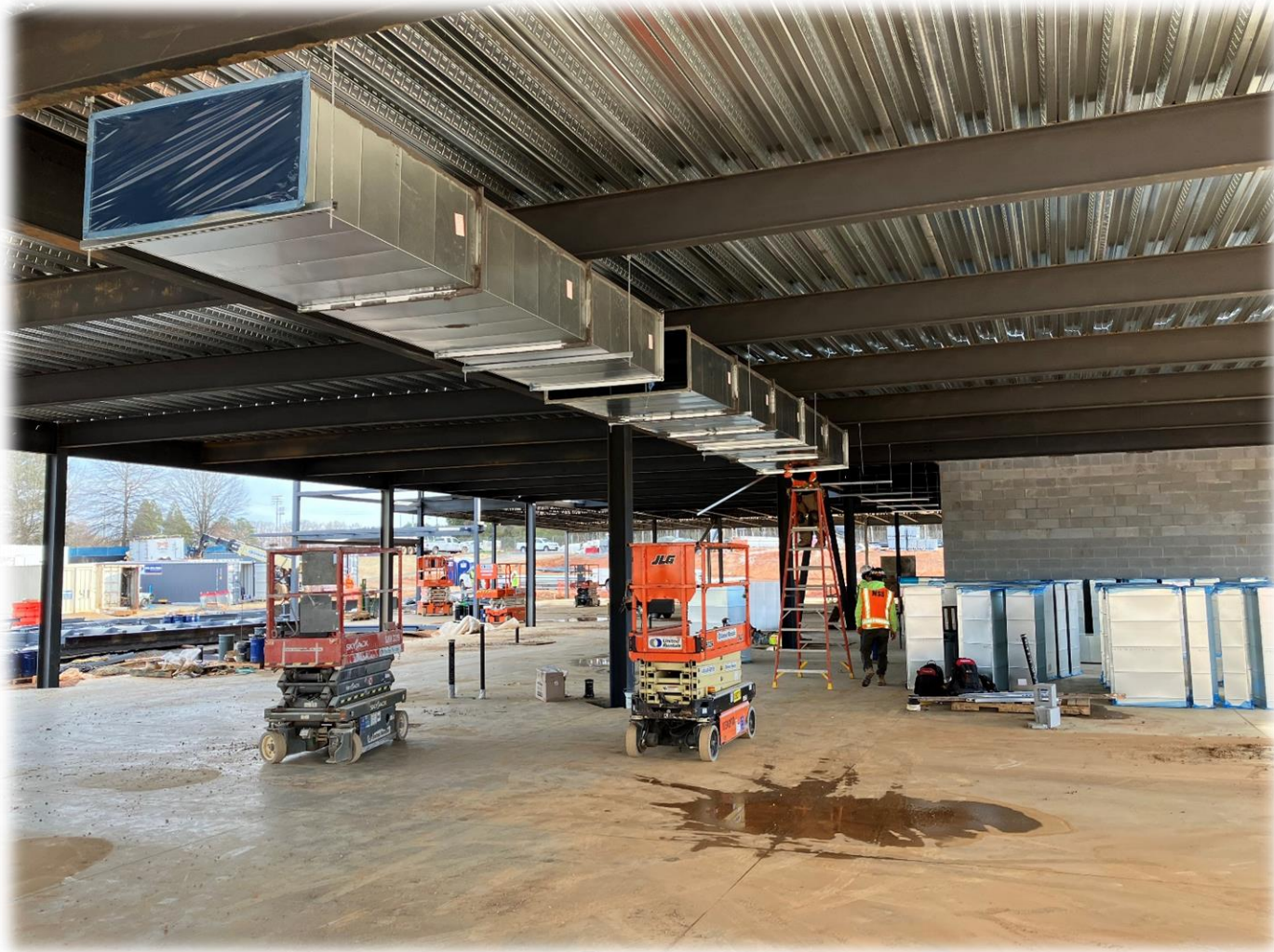
New ES Elon Park, Hawk Ridge, Polo Ridge

PROJECT PROGRESS PHOTOS



New ES Elon Park, Hawk Ridge, Polo Ridge

PROJECT PROGRESS PHOTOS



New ES Elon Park, Hawk Ridge, Polo Ridge

PROJECT PROGRESS PHOTOS



New HS Ardrey Kell, South Mecklenburg

PROJECT PROGRESS PHOTOS



New HS Ardrey Kell, South Mecklenburg

PROJECT PROGRESS PHOTOS



New HS Ardrey Kell, South Mecklenburg



New ES Windsor, Winterfield, Idlewild



New ES Windsor, Winterfield, Idlewild

PROJECT PROGRESS PHOTOS



New ES Windsor, Winterfield, Idlewild

PROJECT PROGRESS PHOTOS

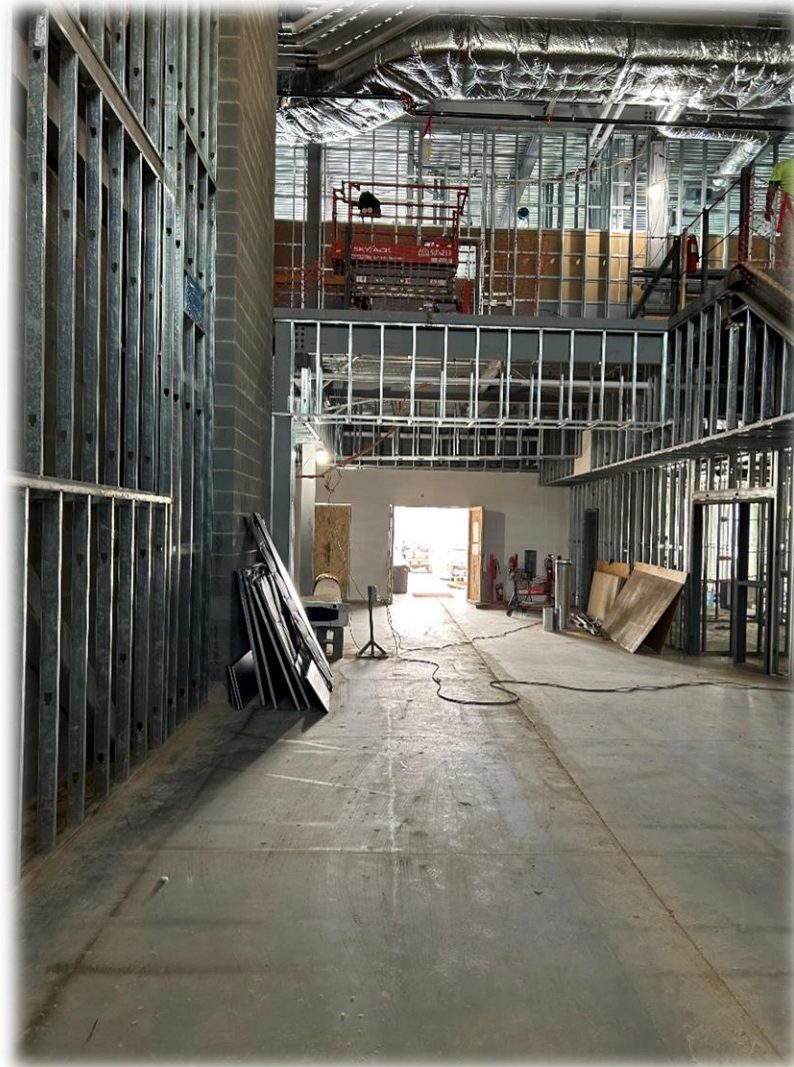


New ES Hidden Valley, JW Grier, Newell



New ES Hidden Valley, JW Grier, Newell

PROJECT PROGRESS PHOTOS



New ES Hidden Valley, JW Grier, Newell



Mountain Island Lake Academy

PROJECT PROGRESS PHOTOS



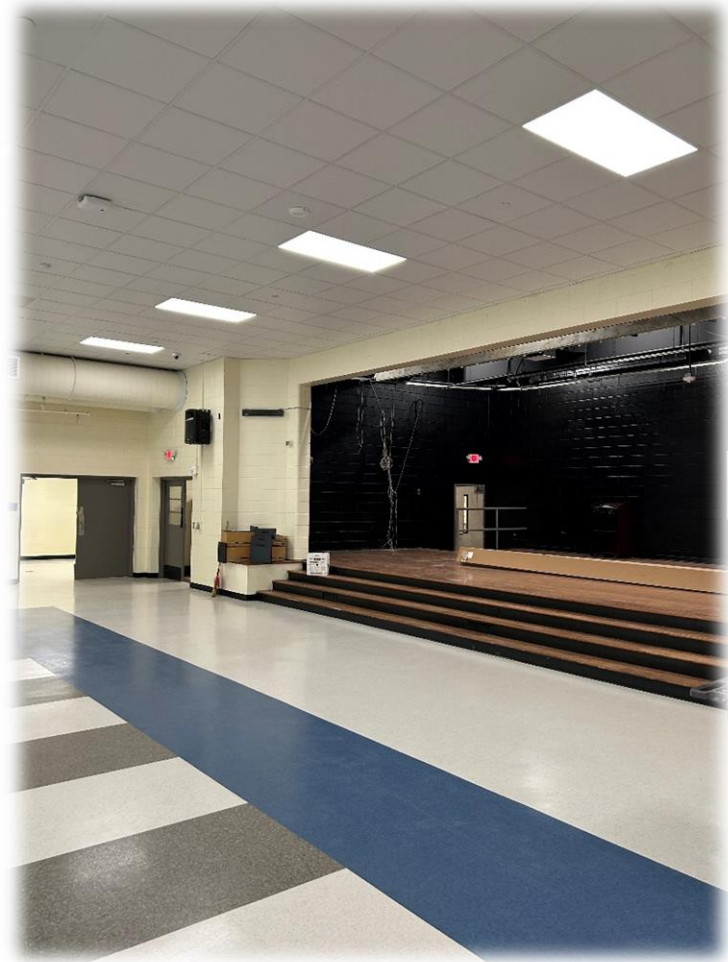
Mountain Island Lake Academy

PROJECT PROGRESS PHOTOS



Mountain Island Lake Academy

PROJECT PROGRESS PHOTOS



J.T. Williams

MWSBE PARTICIPATION REPORT

Contract Status Report - MWSBE Participation Commitments

Report Date 3/2/2023

Charlotte-Mecklenburg Schools

3/2/2023 12:06:32 PM

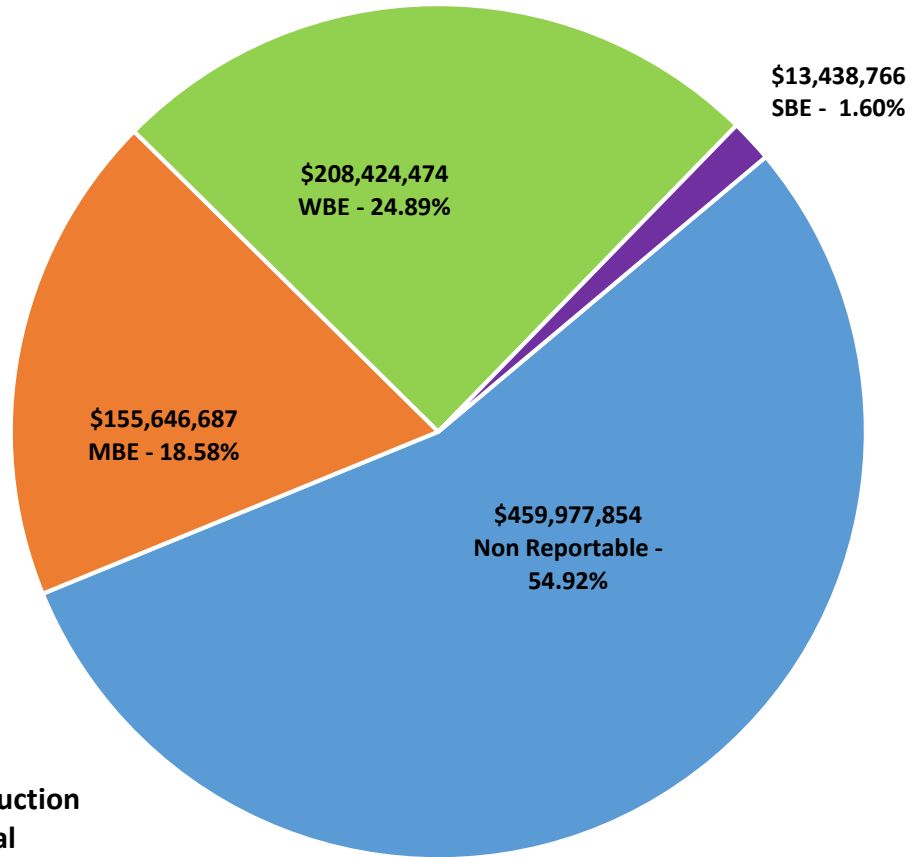
2017 Bond Projects

February 2023 Monthly Bond Report

| Facility | Contract Amount | African American MBE\$ | % | Other MBE \$ | % | Total MBE \$ | % | Other WBE \$ | % | Other SBE \$ | % | Total | % |
|--|-----------------|------------------------|--------|--------------|--------|--------------|--------|--------------|--------|--------------|-------|--------------|--------|
| <u>Briarwood Elementary School (17)</u> | \$28,413,151 | \$4,075,384 | 14.34% | \$2,135,619 | 7.52% | \$6,211,003 | 21.86% | \$2,187,249 | 7.70% | \$187,102 | 0.66% | \$8,585,354 | 30.22% |
| <u>Career and Technology Education (17)</u> | \$5,596,312 | \$522,870 | 9.34% | \$315,278 | 5.63% | \$838,148 | 14.98% | \$203,576 | 3.64% | \$65,475 | 1.17% | \$1,107,199 | 19.78% |
| <u>Charlotte-Mecklenburg Academy (17)</u> | \$17,035,852 | \$198,536 | 1.17% | \$1,029,192 | 6.04% | \$1,227,728 | 7.21% | \$928,554 | 5.45% | \$13,200 | 0.08% | \$2,169,482 | 12.73% |
| <u>Collinswood Language Academy (17)</u> | \$38,527,704 | \$649,287 | 1.69% | \$1,613,103 | 4.19% | \$2,262,390 | 5.87% | \$11,362,566 | 29.49% | \$9,328 | 0.02% | \$13,634,284 | 35.39% |
| <u>E.E. Waddell (17)</u> | \$2,065,933 | \$0 | 0.00% | \$0 | 0.00% | \$0 | 0.00% | \$10,950 | 0.53% | \$0 | 0.00% | \$10,950 | 0.53% |
| <u>East Mecklenburg High School (17)</u> | \$12,670,855 | \$603,811 | 4.77% | \$532,460 | 4.20% | \$1,136,271 | 8.97% | \$490,382 | 3.87% | \$681,075 | 5.38% | \$2,307,728 | 18.21% |
| <u>Garinger High School (17)</u> | \$4,335,847 | \$407,299 | 9.39% | \$1,452,056 | 33.49% | \$1,859,355 | 42.88% | \$913,472 | 21.07% | \$270,990 | 6.25% | \$3,043,818 | 70.20% |
| <u>Harding High School (17)</u> | \$13,015,986 | \$1,504,505 | 11.56% | \$310,356 | 2.38% | \$1,814,862 | 13.94% | \$4,010,831 | 30.81% | \$176 | 0.00% | \$5,825,869 | 44.76% |
| <u>JT Williams (17)</u> | \$15,367,879 | \$2,000 | 0.01% | \$20,000 | 0.13% | \$22,000 | 0.14% | \$988,115 | 6.43% | \$51,800 | 0.34% | \$1,061,915 | 6.91% |
| <u>Lansdowne Elementary School (17)</u> | \$30,700,612 | \$2,617,363 | 8.53% | \$788,126 | 2.57% | \$3,405,489 | 11.09% | \$2,051,155 | 6.68% | \$223,625 | 0.73% | \$5,680,270 | 18.50% |
| <u>Lincoln Heights Elementary School (17)</u> | \$2,179,240 | \$92,274 | 4.23% | \$18,800 | 0.86% | \$111,074 | 5.10% | \$0 | 0.00% | \$74,503 | 3.42% | \$185,577 | 8.52% |
| <u>Mint Hill Elementary School (17)</u> | \$26,323,261 | \$5,223,675 | 19.84% | \$18,319,957 | 69.60% | \$23,543,632 | 89.44% | \$1,201,089 | 4.56% | \$308,370 | 1.17% | \$25,053,091 | 95.17% |
| <u>Montclair Elementary School (17)</u> | \$26,093,784 | \$3,617,952 | 13.87% | \$2,260,381 | 8.66% | \$5,878,333 | 22.53% | \$5,731,016 | 21.96% | \$517,257 | 1.98% | \$12,126,605 | 46.47% |
| <u>Mountain Island Lake Academy (17)</u> | \$12,499,991 | \$156,948 | 1.26% | \$779,166 | 6.23% | \$936,114 | 7.49% | \$918,248 | 7.35% | \$30,300 | 0.24% | \$1,884,662 | 15.08% |
| <u>New Elementary School (Elon, Hawk)</u> | \$44,157,403 | \$5,793,101 | 13.12% | \$991,715 | 2.25% | \$6,784,816 | 15.37% | \$8,431,144 | 19.09% | \$1,167,083 | 2.64% | \$16,383,043 | 37.10% |
| <u>New Elementary School (Hidden Vall)</u> | \$38,657,270 | \$5,493,635 | 14.21% | \$4,211,754 | 10.90% | \$9,705,389 | 25.11% | \$2,237,544 | 5.79% | \$25,600 | 0.07% | \$11,968,533 | 30.96% |
| <u>New Elementary School (Windsor, W)</u> | \$41,219,974 | \$8,807,507 | 21.37% | \$3,356,831 | 8.14% | \$12,164,338 | 29.51% | \$26,466,433 | 64.21% | \$7,440 | 0.02% | \$38,638,211 | 93.74% |
| <u>New High School (South, Ardrey) (17)</u> | \$132,698,981 | \$2,642,133 | 1.99% | \$5,148,531 | 3.88% | \$7,790,664 | 5.87% | \$12,997,901 | 9.80% | \$4,294,119 | 3.24% | \$25,082,683 | 18.90% |
| <u>North Academy of World Languages (17)</u> | \$38,090,783 | \$1,688,775 | 4.43% | \$1,575,863 | 4.14% | \$3,264,638 | 8.57% | \$3,471,693 | 9.11% | \$437,418 | 1.15% | \$7,173,748 | 18.83% |
| <u>Northwest School of the Arts (17)</u> | \$3,630,565 | \$0 | 0.00% | \$37,000 | 1.02% | \$37,000 | 1.02% | \$27,850 | 0.77% | \$0 | 0.00% | \$64,850 | 1.79% |
| <u>Palisades High School (17)</u> | \$98,070,130 | \$13,504,638 | 13.77% | \$7,587,760 | 7.74% | \$21,092,398 | 21.51% | \$13,786,630 | 14.06% | \$2,996,568 | 3.06% | \$37,875,596 | 38.62% |
| <u>Shamrock Gardens Elementary School (17)</u> | \$28,035,161 | \$2,366,885 | 8.44% | \$1,472,922 | 5.25% | \$3,839,807 | 13.70% | \$23,207,193 | 82.78% | \$274,496 | 0.98% | \$27,321,497 | 97.45% |
| <u>Sharon Elementary School (17)</u> | \$8,534,491 | \$326,844 | 3.83% | \$283,497 | 3.32% | \$610,341 | 7.15% | \$926,873 | 10.86% | \$217,984 | 2.55% | \$1,755,197 | 20.57% |
| <u>South Academy of International Languages (17)</u> | \$37,073,557 | \$6,023,141 | 16.25% | \$2,431,071 | 6.56% | \$8,454,212 | 22.80% | \$10,911,546 | 29.43% | \$347,799 | 0.94% | \$19,713,557 | 53.17% |

| Facility | Contract Amount | African American MBE\$ | % | Other MBE \$ | % | Total MBE \$ | % | Other WBE \$ | % | Other SBE \$ | % | Total | % |
|---|----------------------|------------------------|--------------|---------------------|--------------|----------------------|---------------|----------------------|---------------|---------------------|--------------|----------------------|---------------|
| <u>South Mecklenburg High School (17)</u> | \$1,200,154 | \$0 | 0.00% | \$0 | 0.00% | \$0 | 0.00% | \$0 | 0.00% | \$0 | 0.00% | \$0 | 0.00% |
| <u>South Pine Academy (17)</u> | \$26,161,268 | \$916,165 | 3.50% | \$19,205,893 | 73.41% | \$20,122,058 | 76.92% | \$4,342,256 | 16.60% | \$237,754 | 0.91% | \$24,702,068 | 94.42% |
| <u>West Charlotte High School (17)</u> | \$95,322,244 | \$7,823,736 | 8.21% | \$3,917,680 | 4.11% | \$11,741,415 | 12.32% | \$68,556,456 | 71.92% | \$715,530 | 0.75% | \$81,013,401 | 84.99% |
| <u>West Mecklenburg High School (17)</u> | \$9,809,391 | \$283,809 | 2.89% | \$509,403 | 5.19% | \$793,212 | 8.09% | \$2,063,752 | 21.04% | \$283,775 | 2.89% | \$3,140,739 | 32.02% |
| Grandtotal | \$837,487,781 | \$75,342,274 | 9.00% | \$80,304,413 | 9.59% | \$155,646,687 | 18.58% | \$208,424,474 | 24.89% | \$13,438,766 | 1.60% | \$377,509,927 | 45.08% |

MWSBE Participation 2017 Bond Projects



**Design and Construction
Contract Total
\$837,487,781**

PROJECT CONTROLS

**CHARLOTTE-MECKLENBURG BOARD OF EDUCATION
2013 BOND SERIES-CAPITAL IMPROVEMENT PROGRAM
BUDGET STATUS REPORT**

| | Original Project Budget | Current Project Budget | Committed Amount | Approved Change Orders | Total Committed | Pending Commitments | To Be Committed | Prev Paid To Date | Paid To Date | Balance To Complete | Monthly Expenditure |
|---|-------------------------|------------------------|---------------------|------------------------|----------------------|---------------------|--------------------|----------------------|----------------------|---------------------|---------------------|
| | (A) | (B) | (C) | (D) | (E)=C+D | (F) | (G)=(B-E-F) | (H) | (I) | (J)=(B-I) | (K)=(I-H) |
| <u>A. REPLACEMENT & RENOVATIONS</u> | | | | | | | | | | | |
| 1 Career & Technology Education Institutes Phase 1: | \$8,640,000 | \$18,697,857 | \$6,811,184 | \$11,886,477 | \$18,697,661 | \$0 | \$196 | \$18,189,690 | \$18,247,882 | \$449,975 | \$58,192 |
| 2 Davidson K-8 Conversion | \$9,500,000 | \$13,461,149 | \$2,131,151 | \$11,329,998 | \$13,461,149 | \$0 | \$0 | \$13,461,149 | \$13,461,149 | \$0 | \$0 |
| 3 J.M. Alexander Middle Replacement | \$30,672,000 | \$29,845,539 | \$4,502,518 | \$25,343,021 | \$29,845,539 | \$0 | \$0 | \$29,845,539 | \$29,845,539 | \$0 | \$0 |
| 4 Nations Ford Elementary Replacement | \$19,440,000 | \$19,231,604 | \$3,958,871 | \$15,272,733 | \$19,231,604 | \$0 | \$0 | \$19,231,604 | \$19,231,604 | \$0 | \$0 |
| 5 Northwest School of the Arts | \$12,420,000 | \$12,868,718 | \$2,047,917 | \$10,820,801 | \$12,868,718 | \$0 | \$0 | \$12,868,719 | \$12,868,719 | \$0 | \$0 |
| 6 Oakhurst STEAM Magnet Elementary/Starmount | \$5,940,000 | \$5,407,812 | \$3,471,397 | \$1,936,415 | \$5,407,812 | \$0 | \$0 | \$5,407,812 | \$5,407,812 | \$0 | \$0 |
| 7 Pre-K-8 Conversions Phase II: Ashley Park/ Bruns | \$24,732,000 | \$19,700,807 | \$4,167,671 | \$15,533,138 | \$19,700,809 | \$0 | \$0 | \$19,700,807 | \$19,700,807 | \$0 | \$0 |
| 8 Selwyn Elementary | \$2,592,000 | \$4,624,831 | \$744,799 | \$3,880,032 | \$4,624,831 | \$0 | \$0 | \$4,624,831 | \$4,624,831 | \$0 | \$0 |
| 9 Statesville Road Elementary | \$20,340,000 | \$20,648,509 | \$5,081,473 | \$15,567,037 | \$20,648,509 | \$0 | \$0 | \$20,648,509 | \$20,648,509 | \$0 | \$0 |
| 10 West Mecklenburg HS | \$0 | \$3,993,543 | \$3,993,543 | \$0 | \$3,993,543 | \$0 | \$0 | \$3,993,543 | \$3,993,543 | \$0 | \$0 |
| Total Replacement & Renovations | \$134,276,000 | \$148,480,367 | \$36,910,523 | \$111,569,652 | \$148,480,175 | \$0 | \$197 | \$147,972,202 | \$148,030,394 | \$449,973 | \$58,192 |
| <u>B. RESPONSE TO ENROLLMENT GROWTH</u> | | | | | | | | | | | |
| 1 East Mecklenburg High Addition | \$12,744,000 | \$12,083,804 | \$4,465,200 | \$7,618,603 | \$12,083,803 | \$0 | \$0 | \$12,083,803 | \$12,083,803 | \$0 | \$0 |
| 2 Myers Park High Addition | \$22,248,000 | \$11,040,942 | \$1,207,493 | \$9,833,448 | \$11,040,942 | \$0 | \$0 | \$11,040,941 | \$11,040,941 | \$0 | \$0 |
| 3 Northridge Middle Addition | \$6,448,000 | \$6,366,170 | \$2,114,306 | \$4,251,865 | \$6,366,171 | \$0 | \$0 | \$6,366,171 | \$6,366,171 | \$0 | \$0 |
| 4 Olympic High Addition/Renovation | \$8,964,000 | \$8,947,310 | \$2,002,694 | \$6,944,615 | \$8,947,310 | \$0 | \$0 | \$8,947,310 | \$8,947,310 | \$0 | \$0 |
| 5 South Mecklenburg High Addition | \$18,360,000 | \$16,307,355 | \$2,922,282 | \$13,385,073 | \$16,307,355 | \$0 | \$0 | \$16,307,355 | \$16,307,355 | \$0 | \$0 |
| 6 Charlotte East Language Academy (FKA -New Lang | \$30,376,000 | \$31,387,929 | \$5,740,182 | \$25,647,747 | \$31,387,929 | \$0 | \$0 | \$31,387,929 | \$31,387,929 | \$0 | \$0 |
| 7 Rea Farms STEAM Academy | \$31,376,000 | \$40,476,000 | \$9,077,465 | \$29,821,441 | \$38,898,906 | \$0 | \$1,577,094 | \$38,898,906 | \$38,898,906 | \$1,577,094 | \$0 |
| 8 Renaissance West STEAM Academy (FKA New Pre- | \$30,376,000 | \$31,698,952 | \$5,667,388 | \$26,031,564 | \$31,698,952 | \$0 | \$0 | \$31,698,952 | \$31,698,952 | \$0 | \$0 |
| 9 New High School - South Meck/Ardrey Kell Relief * | \$0 | \$9,278,699 | \$9,278,699 | \$0 | \$9,278,699 | \$0 | \$0 | \$9,278,699 | \$9,278,699 | \$0 | \$0 |
| Total Response to Enrollment Growth | \$160,892,000 | \$167,587,161 | \$42,475,710 | \$123,534,357 | \$166,010,067 | \$0 | \$1,577,094 | \$166,010,066 | \$166,010,066 | \$1,577,095 | \$0 |
| <u>C. CONTINGENCY</u> | | | | | | | | | | | |
| | \$0 | \$0 | \$0 | \$0 | \$0 | \$0 | \$0 | \$0 | \$0 | \$0 | \$0 |
| Total Contingency | \$0 | \$0 | \$0 | \$0 | \$0 | \$0 | \$0 | \$0 | \$0 | \$0 | \$0 |
| TOTAL LOCAL BOND PROGRAM | \$295,168,000 | \$316,067,527 | \$79,386,233 | \$235,104,009 | \$314,490,242 | \$0 | \$1,577,291 | \$313,982,268 | \$314,040,460 | \$2,027,067 | \$58,192 |

Original project estimated costs approved by the Board Of Education on July 23, 2013 and approved by the voters of Mecklenburg County on November 5, 2013.

Note: Mecklenburg County's appropriated interest from COPS to increase funding for the 2013 Bond Program.

**CHARLOTTE-MECKLENBURG BOARD OF EDUCATION
2017 BOND SERIES-CAPITAL IMPROVEMENT PROGRAM
BUDGET STATUS REPORT**

| | Original Project Budget | Current Project Budget | Committed Amount | Approved Change Orders | Total Committed | Pending Commitments | To Be Committed | Prev Paid To Date | Paid To Date | Balance To Complete | Monthly Expenditure |
|---|-------------------------|------------------------|---------------------|------------------------|----------------------|---------------------|---------------------|----------------------|----------------------|----------------------|---------------------|
| | (A) | (B) | (C) | (D) | (E)=C+D | (F) | (G)=(B-E-F) | (H) | (I) | (J)=(B-I) | (K)=(I-H) |
| A. REPLACEMENT & RENOVATIONS | | | | | | | | | | | |
| 1 Briarwood Elementary * | \$29,091,619 | \$31,243,066 | \$4,730,586 | \$26,410,339 | \$31,140,925 | (\$1,500) | \$103,642 | \$31,101,615 | \$31,101,615 | \$141,451 | \$0 |
| 2 Bruns Academy Replacement | \$34,207,808 | \$48,890,679 | \$4,192,128 | \$42,406,336 | \$46,598,464 | \$0 | \$2,292,215 | \$1,648,429 | \$1,844,009 | \$47,046,671 | \$195,580 |
| 3 Career & Technology Education Upgrades | \$10,101,734 | \$9,659,765 | \$2,290,761 | \$3,768,875 | \$6,059,636 | (\$176) | \$3,600,305 | \$5,656,872 | \$5,671,428 | \$3,988,337 | \$14,556 |
| 4 Collinswood K-8 * | \$44,172,540 | \$41,412,015 | \$4,927,263 | \$36,484,752 | \$41,412,015 | \$0 | \$0 | \$41,401,384 | \$41,401,384 | \$10,631 | \$0 |
| 5 East Mecklenburg HS | \$12,771,594 | \$10,231,911 | (\$1,651,251) | \$11,852,489 | \$10,201,238 | (\$31,000) | \$61,673 | \$10,085,792 | \$10,085,792 | \$146,119 | \$0 |
| 6 Garinger HS | \$13,936,979 | \$5,236,979 | \$1,589,645 | \$3,560,359 | \$5,150,004 | \$11,800 | \$75,175 | \$4,054,365 | \$4,080,903 | \$1,156,076 | \$26,538 |
| 7 Harding University High * | \$18,330,263 | \$13,747,878 | \$2,045,267 | \$11,702,610 | \$13,747,877 | \$0 | \$0 | \$13,747,877 | \$13,747,877 | \$0 | \$0 |
| 8 Charlotte-Mecklenburg Academy (FKA -EC Specialty | \$18,957,960 | \$17,699,220 | \$2,175,504 | \$15,523,717 | \$17,699,220 | \$0 | \$0 | \$17,699,220 | \$17,699,220 | \$0 | \$0 |
| 9 Lansdowne Elementary | \$29,391,270 | \$33,804,188 | \$3,982,547 | \$29,390,214 | \$33,372,761 | \$33,075 | \$398,353 | \$30,724,985 | \$30,733,452 | \$3,070,736 | \$8,467 |
| 10 Lincoln Heights Elementary | \$3,740,478 | \$4,588,675 | \$2,590,728 | \$430,318 | \$3,021,046 | \$3,000 | \$1,564,629 | \$591,039 | \$870,988 | \$3,717,687 | \$279,948 |
| 11 Montclair Elementary Replacement * | \$28,559,390 | \$28,200,634 | \$2,426,761 | \$25,773,873 | \$28,200,634 | \$0 | \$0 | \$28,200,634 | \$28,200,634 | \$0 | \$0 |
| 12 Mountain Island k-8 | \$9,218,439 | \$13,239,686 | \$1,684,909 | \$11,418,864 | \$13,103,773 | \$12,000 | \$123,913 | \$6,256,081 | \$7,079,405 | \$6,160,281 | \$823,324 |
| 13 Northwest School of the Arts | \$17,632,202 | \$12,167,000 | \$5,105,350 | (\$613,656) | \$4,491,694 | \$0 | \$7,675,306 | \$477,513 | \$478,449 | \$11,688,551 | \$937 |
| 14 Shamrock Gardens Elementary * | \$29,890,351 | \$30,784,692 | \$3,467,208 | \$27,080,324 | \$30,547,532 | (\$759,395) | \$996,554 | \$28,784,541 | \$29,162,510 | \$1,622,182 | \$377,970 |
| 15 Sharon Elementary | \$7,706,528 | \$9,125,862 | \$1,430,125 | \$7,675,679 | \$9,105,804 | \$0 | \$20,058 | \$9,067,791 | \$9,067,791 | \$58,071 | \$0 |
| 16 South Mecklenburg HS | \$13,352,143 | \$15,622,927 | \$1,769,924 | \$94,238 | \$1,864,162 | \$0 | \$13,758,765 | \$553,313 | \$588,376 | \$15,034,551 | \$35,063 |
| 17 E.E. Waddell Magnet HS | \$4,571,709 | \$5,137,367 | \$2,829,355 | \$98,796 | \$2,928,151 | \$12,000 | \$2,197,216 | \$1,965,530 | \$1,973,257 | \$3,164,110 | \$7,728 |
| 18 West Charlotte HS Replacement | \$109,977,166 | \$104,413,163 | \$12,077,189 | \$91,586,341 | \$103,663,530 | \$31,566 | \$718,066 | \$91,716,761 | \$92,110,660 | \$12,302,503 | \$393,899 |
| 19 West Mecklenburg HS | \$11,065,440 | \$6,259,479 | (\$2,371,639) | \$8,631,118 | \$6,259,479 | \$0 | \$0 | \$6,260,654 | \$6,260,654 | \$0 | \$0 |
| 20 John Taylor Williams | \$13,964,339 | \$17,032,600 | \$3,569,875 | \$12,350,600 | \$15,920,475 | \$177,268 | \$934,857 | \$7,426,146 | \$8,545,129 | \$8,487,471 | \$1,118,984 |
| Total Replacement & Renovations | \$460,639,952 | \$458,497,787 | \$58,862,235 | \$365,626,185 | \$424,488,421 | (\$511,362) | \$34,520,728 | \$337,420,542 | \$340,703,534 | \$117,794,253 | \$3,282,992 |
| B. RESPONSE TO ENROLLMENT GROWTH | | | | | | | | | | | |
| 1 South Academy of International Languages | \$45,359,367 | \$40,669,909 | \$5,953,333 | \$34,716,308 | \$40,669,641 | \$0 | \$268 | \$40,584,335 | \$40,586,977 | \$82,932 | \$2,642 |
| 2 North Academy of World Languages (FKA - New K-8 | \$45,359,367 | \$41,739,951 | \$6,022,055 | \$35,717,896 | \$41,739,951 | \$0 | \$0 | \$41,733,142 | \$41,742,062 | \$0 | \$8,919 |
| 3 South Pine Academy (FKA - New ES Nations Ford, S | \$29,173,829 | \$30,438,977 | \$6,793,874 | \$23,645,103 | \$30,438,977 | \$0 | \$0 | \$30,474,698 | \$30,474,698 | \$0 | \$0 |
| 4 Mint Hill Elementary School | \$29,988,332 | \$29,671,526 | \$3,296,042 | \$26,377,557 | \$29,673,599 | (\$275,000) | \$272,927 | \$28,455,114 | \$28,571,508 | \$1,100,018 | \$116,395 |
| 5 New Elementary School - Windsor Park Relief * | \$30,422,230 | \$45,855,770 | \$13,322,976 | \$31,659,394 | \$44,982,370 | \$110,113 | \$763,287 | \$18,152,761 | \$20,493,465 | \$25,362,306 | \$2,340,704 |
| 6 New Elementary School - Elon/Hawk Ridge Relief * | \$30,426,712 | \$59,141,761 | \$16,586,033 | \$42,098,607 | \$58,684,640 | \$18,400 | \$438,721 | \$24,479,946 | \$26,733,455 | \$32,408,306 | \$2,253,509 |
| 7 New Elementary School - Hidden Valley Relief | \$30,518,345 | \$44,079,387 | \$6,691,890 | \$36,564,145 | \$43,256,035 | \$0 | \$823,353 | \$20,333,122 | \$22,733,192 | \$21,346,195 | \$2,400,070 |
| 8 Palisades High School | \$109,908,793 | \$107,592,534 | \$10,938,904 | \$96,401,797 | \$107,340,701 | \$19,742 | \$232,091 | \$103,515,008 | \$103,826,748 | \$3,765,786 | \$311,741 |
| 9 New High School - South Meck/Ardrey Kell Relief * | \$110,287,621 | \$160,930,460 | \$11,774,697 | \$125,664,701 | \$137,439,397 | \$20,473 | \$23,470,589 | \$31,513,415 | \$36,759,287 | \$124,171,173 | \$5,245,871 |
| Total Response to Enrollment Growth | \$461,444,596 | \$560,120,275 | \$81,379,803 | \$452,845,507 | \$534,225,310 | (\$106,272) | \$26,001,236 | \$339,241,541 | \$351,921,392 | \$208,198,883 | \$12,679,850 |
| C. CONTINGENCY | | | | | | | | | | | |
| | \$0 | \$0 | \$0 | \$0 | \$0 | \$0 | \$0 | \$0 | \$0 | \$0 | \$0 |
| Total Contingency | \$0 | \$0 | \$0 | \$0 | \$0 | \$0 | \$0 | \$0 | \$0 | \$0 | \$0 |

**CHARLOTTE-MECKLENBURG BOARD OF EDUCATION
2017 BOND SERIES-CAPITAL IMPROVEMENT PROGRAM
BUDGET STATUS REPORT**

| | Original Project Budget | Current Project Budget | Committed Amount | Approved Change Orders | Total Committed | Pending Commitments | To Be Committed | Prev Paid To Date | Paid To Date | Balance To Complete | Monthly Expenditure |
|---------------------------------|-------------------------|------------------------|----------------------|------------------------|----------------------|---------------------|---------------------|----------------------|----------------------|----------------------|---------------------|
| | (A) | (B) | (C) | (D) | (E)=C+D | (F) | (G)=(B-E-F) | (H) | (I) | (J)=(B-I) | (K)=(I-H) |
| TOTAL LOCAL BOND PROGRAM | \$922,084,548 | \$1,018,618,062 | \$140,242,039 | \$818,471,692 | \$958,713,731 | (\$617,633) | \$60,521,964 | \$676,662,083 | \$692,624,926 | \$325,993,136 | \$15,962,842 |

Original project estimated costs approved by the Board Of Education on July 25, 2017 approved by the voters of Mecklenburg County on November 7, 2017.

*Project included in \$33.2M early funding approved by Board Of Education on August 9, 2016 and Mecklenburg Board of County Commissioners on September 6, 2016. On February 19, 2019 an additional \$8M was approved for New Elementary School - Elon/Hawk Ridge Relief site.

*Current Budget includes an additional \$89.2M to fund increase land and construction costs. The additional funds were approved by the Board of County Commissioners on June 16, 2020.

The New Elementary School - Elon/Hawk Ridge Relief current Budget includes 6.8M for Park and Recreation Project.

Current Budget reflects a reclass of \$7.4M in expenditures to 2007 Bond Program.

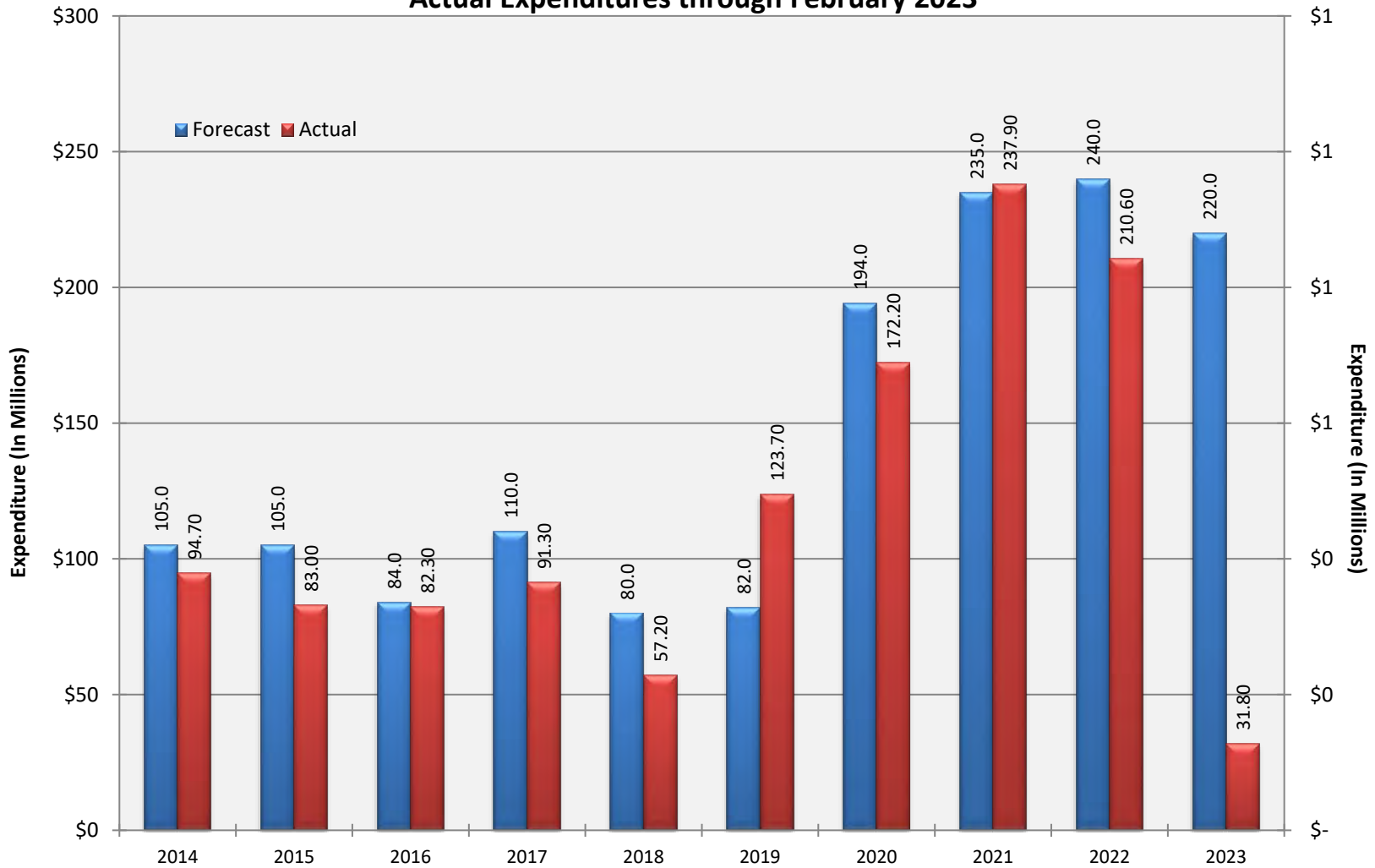
Charlotte-Mecklenburg Board of Education
Approved Construction or Repair Change Orders*
Reporting Period: February 2023

| Funding Source | Project Name | Contractor | Description | Change Order Amount | Revised Contract Value |
|----------------|---------------------------------|--|--|---------------------|------------------------|
| 2017 Bond | Sharon Elementary School (17) | Samet Corporation | Building Automation Control Modifications | \$8,694.83 | \$7,836,012.13 |
| 2017 Bond | West Charlotte High School (17) | RODGERS-HOLT BROTHERS, a Joint Venture | Interior Signage credit; Provide Temp Helios at Bus Entrance; Provide Dumpsters for Move; Graphics at Area E Bathroom; Provide State Championship Banner; Gym Wall for Banners; Add Alarmed Exit Device at Stair C Doors; Add Floor Stops; Reconcile CM Allowance. | \$25,267.00 | \$88,778,424.00 |

* Not previously presented to the Board of Education for Approval

10 YEAR EXPENDITURE SUMMARY

**Forecast Expenditure versus
Actual Expenditures through February 2023**



GLOSSARY

Glossary

- **Project Management** – This section includes updates from our project managers and describes the currently active construction projects. This includes from Board of Education award thru final completion.
- **Design and Bidding** – This section contains updates from our design managers on the projects currently in the design phase. This phase from design award to Board of Education award of construction.
- **Controls** – Section includes misc. updates from controls group including expenditures, related Board of Education awards during the reporting period, cash flow information. This section covers all projects from approved bond through final expenditures and bond close with the county.
- **MWSBE** – Contains updates from the MWSBE Director and team, including current activity and summaries of the participation by MWSBE providers on our program.
- **Bond Progress Summary** – Provides a summary of bond financials including bond value, committed/pending amounts, paid to date, expended this month.
- **Project Procurement Dates** - Next 90 Days major project bid activity.
- **Mobile Swing Space Utilization** – Includes a summary of program related swing space currently in use and the schedule of use.
- **Bond Summary Schedule** – Current program summary schedule including planned design, construction and FF&E. These activities are fed from detailed schedules and are fine-tuned as project information is available.
- **Project Contractor Teams**; Provides summary of turnover dates for completed/closed projects since 2010 including architects/designers and contractors.
- **School Site Location Maps** – General location of bond projects (2017) by type.
- **Project Status Report** – This section of the report provides a summary of the bond project scope, current estimate (all sources), planned occupancy/actual occupancy date. It also provides a current status of the design phase, construction progress and a brief update. The report currently includes 2013 and 2017 bond projects that have or will be completed after to August 2016.
- **MWSBE Participation Report** – The MWSBE report provides a summary of the participation on the 2013 & 2017 Bond funded projects.
- **Project Progress Photos** – Includes photos of active construction projects.
- **Budget Summary Reports** – These reports are by funding source and summarize financial activity to date on the projects. This includes original and current project estimates, committed values, amounts paid to date, balances and monthly expenditures.
- **Change Orders < \$90,000** – This month's approved construction or repair change orders < \$90,000.
- **Expenditure Summary** – Provides a summary of Bond Expenditures by calendar year.