

# Capital Improvement Program

## Monthly Bond Report January 2023



*New ES (Hidden Valley, JW Grier, Newell)*



---

## **CAPITAL PROGRAM SERVICES**

### **Capital Improvement Program**

### **JANUARY 2023**

### **MONTHLY BOND REPORT**

#### **PROGRAM OVERVIEW**

- Project Management
- Design and Bidding
- Controls
- MWSBE
- Bond Progress Summary
- Project Procurement - Next 90 Days
- Swing Space Utilization
- Bond Summary Schedule
- Project Contractor Teams; Projects in Design/Construction and Substantially Completed/Closed
- School Site Location Maps
  - Elementary Schools
  - Middle Schools
  - High Schools & Specialty Schools

#### **PROJECT STATUS REPORT**

#### **MWSBE PARTICIPATION REPORT**

#### **PROJECT PROGRESS PHOTOS**

#### **PROJECT CONTROLS**

- Budget Summary Reports
  - 2013 Bond Series
  - 2017 Bond Series
- Change Orders < \$90,000
- Expenditure Summary

#### **GLOSSARY**

# PROGRAM OVERVIEW

## PROJECT MANAGEMENT

The following is a summary of the activity on the bond funded projects in construction during the month of January.

The contractor for **E.E. Waddell** has completed the renovations. The project is now in closeout.

The construction manager for the **Garinger Addition and Renovation** project's 300 Building renovations completed final inspections and received the certificate of occupancy. The construction manager is working to complete commissioning activities. The replacement glass and glazing will continue over the next couple of months.

The construction manager for **JT Williams Secondary Montessori** is finalizing the 100 building interior finishes. Building renovations are nearing completion with exception of the following. Supply chain issues are affecting delivery of the mechanical roof top units; this in conjunction with the timing of the required fire-line water taps will likely impact the 100 Building occupancy in early spring. The work on the modular classroom building continues, once completed it will be utilized for swing space while renovations in the 200 Building take place.

The **Lansdowne Elementary School** future playfield is now at grade and finish seed and straw are scheduled to begin as weather permits. The new playgrounds are scheduled for installation in late February. The site work will be completed in early 2023.

The **Lincoln Heights** repurpose project started construction activities this month, in addition the design and construction teams are continuing the coordination of the Trillium Montessori program requirements into the project. The building is scheduled for occupancy August 2023.

The **Mountain Island Lake Academy Gym/Classroom Addition** construction manager completed load bearing masonry and structural steel. The mechanical, electrical and plumbing trades continued with rough ins throughout the building. The new building is scheduled for occupancy August 2023.

The **New Elementary School (Elon, Hawk Ridge, Polo Relief)** construction manager continued to manage multiple trades through the project. The mason continued with Building B stair, firewall and the load bearing wall at the back of the stage. The steel erector mobilized and began setting the building A steel. The recreation-building slab was poured and load bearing masonry started. The project team is working to identify options to mitigate schedule impacts from the later and anticipated receipt of permits, masonry delays and potential supply chain issues. The road procurement package has been revised and will rebid in early 2023. The new 45-classroom elementary school is located across from the Ardrey Kell High School.

The **New Elementary School (Hidden Valley, JW Grier, Newell Relief)** construction manager has paved the bus loop road around back connecting to Northridge Middle School. Stone is set at front staff/visitor lot awaiting good weather to pave. The brick veneer is progressing around the building. Mechanical and Electrical trade partners are progressing with above ceiling rough ins. Due to extended Charlotte Water lead times the installation for the new water tap is now scheduled in late spring. The construction team continues to work through supply chain material delivery issues. This new 45-classroom school will be located next to Northridge Middle School and is scheduled for occupancy August 2023.

The **New Elementary School (Windsor Park, Winterfield, Idlewild Relief)** construction manager has progressed with site work including bringing areas to final grade. Brick veneer is currently being installed around the building. Single ply roof membrane has started on classroom wing. The mechanical, electrical, and plumbing contractors are completing in wall rough ins. This new 45-classroom school is currently scheduled for occupancy August 2023.

The **New High School (South, Ardrey Relief)** construction manager continued with footings, below grade masonry installations in addition to load bearing masonry throughout the building. Below slab electrical and plumbing rough ins continue along with slab prep. The mason continues with the installation of CMU walls in the band and auditorium. Blasting to remove rock and provide backfill for the site retaining walls continues. Site work is ongoing including sanitary and storm installations throughout the site. The new 100-classroom relief high school is scheduled for occupancy August 2024.

The **West Charlotte High School** construction manager continues to work on the phase two (demolition/sitework) phase of the project. Site grading continues as areas for parking lots and future ball fields are balanced. Cast in place retaining walls are being formed and poured. The concessions and bathrooms at athletic fields building pads are being brought to grade and staked for footings. The team continues to coordinate the project with school administration. The demolition/and sitework phase is scheduled for completion in August 2023.

## DESIGN AND BIDDING

The following is a summary of the activity on the bond funded projects in design and bidding phase during the month of January.

The **Bruns Avenue Elementary Replacement** construction documents have been received. The remaining bid packages (phase 2) have been received and are under evaluation. The recommendation for the phase 2 work is scheduled for Board of Education approval in March. This new 45-classroom school will incorporate a full-size gym and associated areas in coordination with Charlotte-Mecklenburg Parks & Recreation. Construction is scheduled to start the first quarter of 2023 and occupancy is scheduled August 2024.

The **Northwest School of the Arts** project is scheduled to receive design documents for in February 2023. The design scope includes a new classroom building to replace the existing visual arts building, Building D demolition and other site improvements. The project is planned to be completed in multiple phases; the car parking modifications are scheduled to begin in the fall of 2023.

The **South Mecklenburg High School Addition** project team has completed their review of the 50% construction documents and comments have been incorporated by the architect. The 95% construction documents are scheduled to be delivered in late February for final review comments. Mobiles will be relocated the summer 2023 to allow construction of the new building to begin in the fall of 2023 and be available for occupancy January 2025.

## CONTROLS

Expenditures for the month of January were \$15.8M. This brings our fiscal year to date total to \$114.1M against the 2023 fiscal year cash flow projection of \$230M. The Controls team continues the reconciliation and closeout of completed 2013 and 2017 bond projects. Available funding identified from completed purchase orders reviewed and reconciliations are being accumulated to be used for future capital needs.

The Controls team continues to submit notices of potential changes at school sites so senior staff can adequately evaluate any issues. Additionally, the Controls team continues the processing of contracts, invoices, preparing notices of potential change, change orders, pay applications, and check requests for projects under construction. Captured construction cost data is used to prepare financial reports such as detailed cost reports, budget summaries, reconciliation to CMS books, revisions to and updated cash flows and complete special financial requests by CMS and Mecklenburg County. This process, along with data

compilation and management, allows senior staff to provide the proper guidance/direction and accurate information to the program stakeholders.

No Bond related consent items were submitted for Board of Education approval during the month of January.

## **MWSBE**

As of January 2023, the overall MWSBE utilization percentage related to design and construction of the 2017 bond projects is 43.98% which includes 18.27% participation by minority contractors, 24.16% by women contractors and 1.55% participation by small business contractors. This accounts for more than \$368 million of utilization by Minority, Women and Small Business Contractors.

The Diversity & Inclusion Office of Charlotte-Mecklenburg Schools continued to conduct several individual virtual orientations with new MWSBE contractors and prime contractors. In addition, team members also attended/hosted the following outreach sessions/pre-bid meetings and/or workforce development opportunities:

### Outreach Sessions:

- Elon Relief roadwork outreach hosted by Balfour Beatty
- CMS Bus Facility North and South pre-bid hosted by Edifice
- Carolinas-Virginia Minority Supplier Development Council Metrolina RING Meeting

### Good Faith Efforts:

- Review of Bruns Academy and Bus Facility North and South MWSBE participation documentation

### Workforce Development Opportunities:

The Mayor's Youth Employment Program is currently recruiting companies interested in providing summer internship opportunities for CMS students. The program provides career and professional development experiences to eligible and accepted youth through part-time internships. Students will participate in daily operations of a work environment related to the student's career interest. The program integrates knowledge and theory in the classroom with an emphasis on meaningful on-the-job experience. The program is from June 20, 2023 – July 28, 2023. The Office of Diversity and Inclusion will provide internships for two students. For more information about the program visit: [www.charlottenc.gov/youth](http://www.charlottenc.gov/youth).

Over the next month, team members will continue to work with contractors interested in bidding on the upcoming school projects utilizing various virtual tools to communicate. Contractors are encouraged to review bid advertisements in Charlotte Observer and register as a vendor on the North Carolina Interactive Purchasing System for notification of the various opportunities.

## BOND PROGRESS SUMMARY As of January 2023

Funding Source and Value		Amount Committed/Pending	Amount Paid to Date	Amount Expended This Period
'13 Bond	\$316,067,527	\$314,487,141	\$313,982,268	<b>\$481,968</b>
'17 Bond	\$1,018,618,062	\$940,590,756	\$676,662,083	<b>\$15,295,496</b>
Grand Total	<b>\$1,334,685,589</b>	<b>\$1,255,077,897</b>	<b>\$990,644,351</b>	<b>\$15,777,464</b>

---

## UPCOMING MAJOR CONSTRUCTION PROCUREMENT DATES *Three Month Look Ahead*

### School Name

### Bid Dates\*

**Elon/Polo/Hawk Relief ES – Roadwork Procurement**  
*Managed by Balfour*

February 2023

*\* NOTE: Work In Progress...Dates Subject to Change.*



## SWING SPACE UTILIZATION

Creating a temporary space for students and staff to occupy during construction on a school’s campus has proven to be beneficial to the project’s schedule and cost and overall safety and efficiency of school operations. When the renovation or expansion of a facility is performed and the facility must remain functionally operational, there are benefits to the owner in using swing space.

We have successfully utilized both onsite and offsite swings. The most desirable swings are “offsite” ones. Onsite swing using mobiles or modulars, likewise has been successfully used. The following is a summary of current swing options planned or in use.

<u>School</u>	<u>No. of Mobiles/Relocation Site</u>	<u>Status (From – To)</u>
None at this time		

TASK	2018				2019				2020				2021				2022				2023				2024				2025																														
	J	F	M	A	M	J	J	A	S	O	N	D	J	F	M	A	M	J	J	A	S	O	N	D	J	F	M	A	M	J	J	A	S	O	N	D	J	F	M	A	M	J	J	A	S	O	N	D	J	F	M	A	M	J	J	A	S	O	N
<b>2017 BOND</b>																																																											
<b>BRIARWOOD (2017)</b>																																																											
DESIGN & PERMITTING																																																											
BIDDING & CONSTRUCTION																																																											
FF&E / OCCUPANCY																																																											
<b>BRUNS ACADEMY (2017)</b>																																																											
DESIGN & PERMITTING																																																											
BIDDING & CONSTRUCTION																																																											
FF&E / OCCUPANCY																																																											
<b>CTE UPGRADES - OLYMPIC (2017)</b>																																																											
DESIGN & PERMITTING																																																											
BIDDING & CONSTRUCTION																																																											
FF&E / OCCUPANCY																																																											
<b>CTE UPGRADES - HARDING (2017)</b>																																																											
DESIGN & PERMITTING																																																											
BIDDING & CONSTRUCTION																																																											
FF&E / OCCUPANCY																																																											
<b>CTE UPGRADES - SOUTH MECKLENBURG (2017)</b>																																																											
DESIGN & PERMITTING																																																											
BIDDING & CONSTRUCTION																																																											
FF&E / OCCUPANCY																																																											
<b>CHARLOTTE MECKLENBURG ACADEMY (2017)</b>																																																											
DESIGN & PERMITTING																																																											
BIDDING & CONSTRUCTION																																																											
FF&E / OCCUPANCY																																																											
<b>COLLINSWOOD LANGUAGE ACADEMY (2017)</b>																																																											
DESIGN & PERMITTING																																																											
BIDDING & CONSTRUCTION																																																											
FF&E / OCCUPANCY																																																											
<b>E.E. WADDELL (2017)</b>																																																											
DESIGN & PERMITTING																																																											
BIDDING & CONSTRUCTION																																																											
FF&E / OCCUPANCY																																																											
<b>EAST MECKLENBURG HS (2017)</b>																																																											
DESIGN & PERMITTING																																																											
BIDDING & CONSTRUCTION																																																											
FF&E / OCCUPANCY																																																											
<b>GARINGER RENO / ADDITION / CTE UPGRADES (2017)</b>																																																											
DESIGN & PERMITTING																																																											
BIDDING & CONSTRUCTION																																																											
FF&E / OCCUPANCY																																																											
<b>HARDING HIGH SCHOOL (2017)</b>																																																											
DESIGN & PERMITTING																																																											
BIDDING & CONSTRUCTION																																																											
FF&E / OCCUPANCY - BLDG H																																																											
FF&E / OCCUPANCY - BLDG E																																																											
<b>JT WILLIAMS (2017)</b>																																																											
DESIGN & PERMITTING																																																											
BIDDING & CONSTRUCTION																																																											
FF&E / OCCUPANCY - BUILDING 100 @ JT WILLIAMS																																																											
FF&E / OCCUPANCY - BUILDING 200 @ JT WILLIAMS																																																											
<b>LANSLOWNE ES (2017)</b>																																																											





**Capital Improvements Program**  
*Projects in Design or Under Construction*

School	Architect	General Contractor/CM
<b>Projects In Design</b>		
New Bruns Avenue ES (17)	ADW	Edifice, Inc.
Northwest School of the Arts Addition (17)	LS3P	Balfour Beatty
South Mecklenburg High School Addition (17)	Morris Berg	Balfour Beatty
<b>Projects in Bid/Award/Construction Phase</b>		
E.E. Waddell (17)	Moseley	Randolph & Sons
Garinger Addition/Renovation & CTE (17)	LS3P	Balfour Beatty
J.T. Williams (17)	FWA	New Atlantic
Lansdowne Elementary School Replacement (17)	Perkins Eastman	Edifice, Inc.
Lincoln Heights Repurpose (17)	Neighboring Concepts	Randolph & Sons
Mountain Island School (17)	ADW	Whiting-Turner
New ES (Elon,Hawk Ridge, Polo Ridge) (17)	Little Diversified	Balfour Beatty
New ES (Hidden Valley, JW Grier, Newell) (17)	ADW	Edifice, Inc.
New ES (Windsor, Winterfield, Idlewild) (17)	Neighboring Concepts	Rodgers-Holt Brothers
New HS (South, Ardrey) (17)	Ratio	Messer
West Charlotte High School (17)	LS3P	Rodgers-Holt Brothers

**Capital Improvements Program**  
***Projects Substantially Completed/Closed*** \*

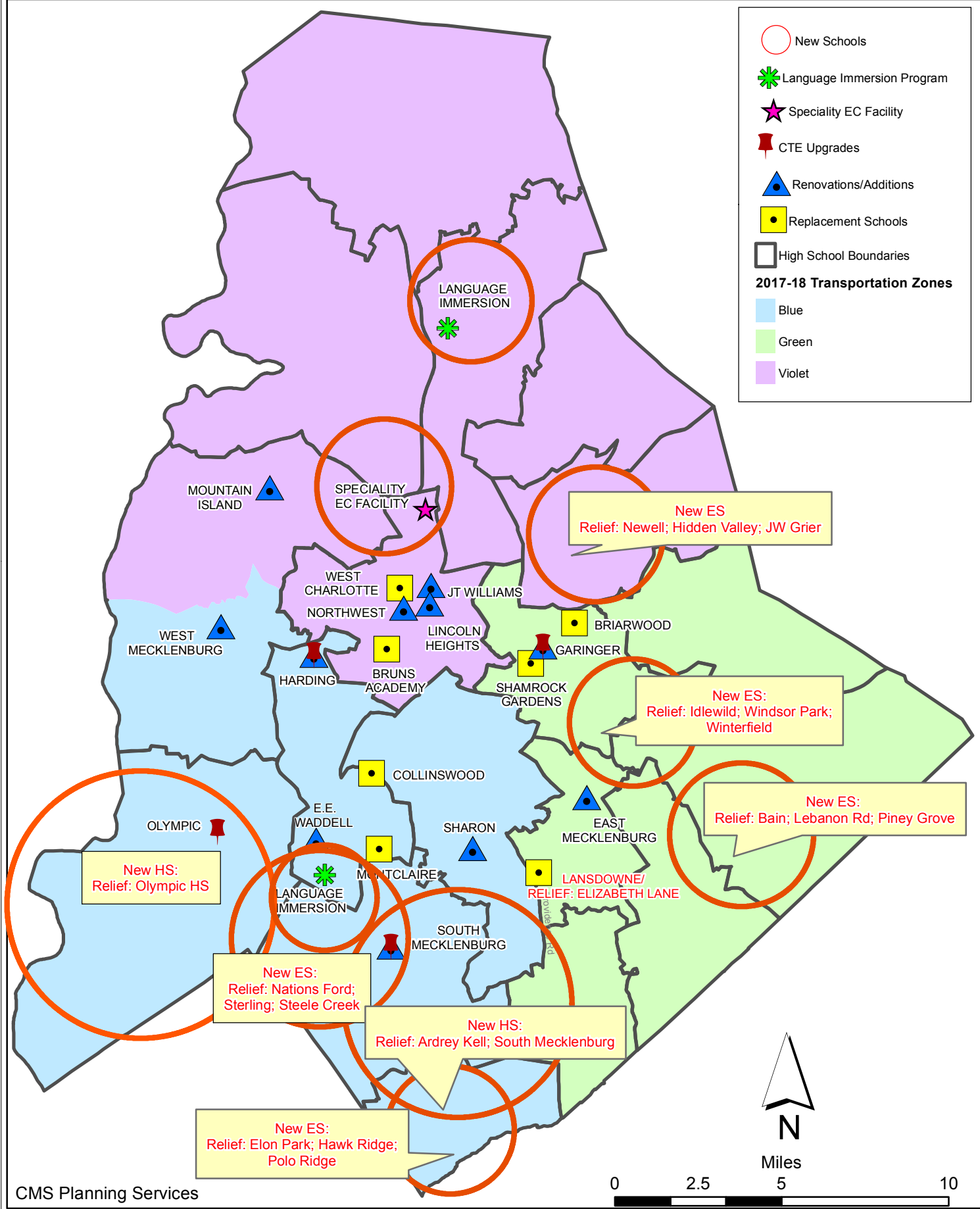
School	Turnover Year	Architect	General Contractor
Palisades High School (Olympic Relief) (17)	Aug-22	Little Diversified	Edifice, Inc.
Shamrock Gardens Elementary School Replacement (17)	Aug-22	Little Diversified	Rodgers/Holt Brothers
Mint Hill ES (17) <i>(fka Bain, Lebanon Rd, Piney Grove)</i>	Aug-22	FWA	Metcon
East Mecklenburg High School (17)	May-22	Morris Berg	Turner Construction
CTE (Harding, Olympic, South) (17)	Jan-22	MPS	Branch Brownstone
Briarwood Elementary School Replacement (17)	Aug-21	ADW	New Atlantic Contracting
Montclair Elementary School (17)	Aug-21	WHN	Messer Construction
North Academy of World Languages (17)	Aug-21	ADW	New Atlantic Contracting
Sharon Elementary School (17)	Aug-21	Clark Nexsen	Samet
South Academy of International Languages (17)	Aug-21	FWA	Messer Construction
South Pine Academy (17)	Aug-21	FWA	Metcon
West Mecklenburg Gym (17)	Aug-21	Moseley	Barnhill/D.A. Everett
Collinswood Language Academy (17)	Aug-20	Perkins Eastman	Turner Construction
Harding High School Renovation (17)	Aug-20	SFLA	Barnhill Contracting
Rea Farms STEAM Academy (13)	Aug-20	Little Diversified	Balfour Beatty
Ashley Park K-8 Conversion (13)	Aug-19	ADW	Turner Construction
Druid Hills K-8 Conversion (13)	Aug-19	ADW	Edifice, Inc.
Selwyn Elementary (13)	Aug-19	Clark Nexsen	Balfour Beatty
Charlotte Mecklenburg Academy (17)	Aug-19	KSQ	Edifice, Inc.
Davidson K-8 (13)	Aug-19	Little Diversified	Gilbane
CTE - North Mecklenburg High (13)	Aug-19	LS3P	Shiel Sexton
CTE - Garinger (13)	Mar-19	LS3P	Hostetter & Son
CTE - Independence (13)	Mar-19	LS3P	D.E. Brown
CTE - West Mecklenburg (13)	Mar-19	LS3P	Hostetter & Son
Charlotte East Language Academy (13)	Aug-18	Morris Berg	Edifice, Inc
Myers Park High School Phase 3 (13)	Aug-18	Boomerang Design	BE&K
Northridge Middle (13)	Aug-18	Morris Berg	Barnhill Contracting
Myers Park High Bldg 2 (13)	Feb-18	Boomerang Design	BE&K
East Mecklenburg High Addition (13)	Jan-18	Bergman (fna Gantt Huberman)	Edifice, Inc.
J.M. Alexander Middle (13)	Aug-17	FWA Group	Balfour Beatty
Northwest School of the Arts Renovation (13)	Aug-17	Moseley	Turner Construction
Renaissance West STEAM Academy (13)	Aug-17	Little Diversified	Rodgers Construction
South Mecklenburg High Addition (13)	Jul-17	SFLA	Barnhill Contracting
Myers Park High Bldg 1 (13)	Sep-16	Boomerang	KBR
Statesville Road Elementary (13)	Aug-16	ADW	JE Dunn
Nations Ford Elementary (13)	Aug-16	Wash Hatem Nelson	Messer Construction
Olympic High Addition (13)	Aug-16	McMillan, Pazdan, Smith	Turner Construction
Lawrence Orr Elementary (07)	Aug-15	Cort Architectural Group	DH Griffin/Metcon
Parkside Elementary (07)	Aug-15	Wash Hatem Nelson	Clancy & Theys
Hawthorne High Renovations (07)	Aug-15	Morris-Berg	Balfour Beatty
Newell Elementary (07)	Aug-15	Perkins Eastman	New Atlantic Contracting
Ranson Middle (07)	Aug-15	Morris-Berg	Edifice, Inc.
Vance High	Jan-15	LS3P	Matthews Construction Co., Inc.
Garinger High - Renovations/Addition	Aug-14	Adams Group Architects	Turner Construction
Olympic High - Stadium	Aug-14	Site Solutions	Turner Construction
West Mecklenburg High - Stadium	Aug-14	Site Solutions	Turner Construction
Collinswood - Indoor Air Quality	Aug-14	PEA	The Bowers Group
Lansdowne - Indoor Air Quality	Aug-14	AeroRaq	Tyler 2
McKee Road - Indoor Air Quality	Aug-14	McCracken & Lopez	Godfrey Construction
Garinger High - Track & Field	Jul-14	Site Solutions	Turner Construction
Independence High - Gym	Jun-14	Shook Kelly	Shelco, Inc. (CM)
Palisades Park Elementary	May-14	Wash Hatem Nelson	Clancy & Theys

Capital Improvements Program  
*Projects Substantially Completed/Closed* \*

School	Turnover Year	Architect	General Contractor
East Mecklenburg High Auditorium	Jan-14	Gantt Huberman Associates	Godfrey Construction Co., Inc.

*Projects closed prior to 2014 are not shown*

# CMS Capital Improvement Plan 2017 Bond Projects





# PROJECT STATUS REPORT



## Monthly Project Status 2017 Bond Summary January 2023

Project	Current Project Estimate	Project Scope	** Occupy On	Design Phase	Construction Progress	Project Status
Briarwood Elementary School (17)	\$ 31,243,066	45-classroom replacement facility; replaces school built in 1956.	August 2021	Complete	100 %	Project is complete.
Bruns Avenue Elementary School (17)	\$ 40,590,679	New 45-classroom elementary school (K-5); replaces old school built in 1969.	August 2024	Complete	0 %	The Bruns Avenue Elementary Replacement construction documents have been received. The remaining bid packages (phase 2) have been received and are under evaluation. The recommendation for the phase 2 work is scheduled for Board of Education approval in March. This new 45-classroom school will incorporate a full-size gym and associated areas in coordination with Charlotte-Mecklenburg Parks & Recreation.
Career and Technology Education (17)	\$ 9,659,765	Phase I CTE upgrades at Olympic, Harding, Garinger and South Mecklenburg.	January 2022	Complete	100 %	Project is complete.
Charlotte-Mecklenburg Academy (17)	\$ 17,699,220	New EC school located on the old Statesville Elementary School site.	August 2019	Complete	100 %	Project is complete.
Collinswood Language Academy (17)	\$ 41,412,015	New 63-classroom K-8 facility on the site of the Smith Family Center.	August 2020	Complete	100 %	Project is complete.
E.E. Waddell (17)	\$ 5,137,367	Repurpose current E.E. Waddell to reopen as a magnet high school.	August 2023	Complete	99 %	The contractor for E.E. Waddell has completed the renovations. The project is now in closeout.
East Mecklenburg High School (17)	\$ 10,231,911	This project will provide for the design, and construction of a new 30 classroom building.	August 2022	Complete	99 %	The East Mecklenburg High School new classroom building was occupied in August. The project is now in the closeout phase.

**Monthly Project Status**

2017 Bond Summary

January 2023

Project	Current Project Estimate	Project Scope	** Occupy On	Design Phase	Construction Progress	Project Status
Garinger High School (17)	\$ 5,236,979	Project includes the design and construction for renovations of 300 building and a new 16 classroom building.	January 2023	Complete	98 %	The construction manager for the Garinger Addition and Renovation project's 300 Building renovations completed final inspections and received the certificate of occupancy. The construction manager is working to complete commissioning activities. The replacement glass and glazing will continue over the next couple of months.
Harding High School (17)	\$ 13,747,878	Renovation of the kitchen, cafeteria, existing gym (aux) and the addition of a new gym.	August 2020	Complete	100 %	Project is complete.
JT Williams (17)	\$ 17,032,600	Project includes building renovations to J.T. Williams Montessori magnet.	August 2024	Complete	57 %	The construction manager for JT Williams Secondary Montessori is finalizing the 100 building interior finishes. Building renovations are nearing completion with exception of the following. Supply chain issues are affecting delivery of the mechanical roof top units; this in conjunction with the timing of the required fire-line water taps will likely impact the 100 Building occupancy in early spring. The work on the modular classroom building continues, once completed it will be utilized for swing space while renovations in the 200 Building take place.
Lansdowne Elementary School (17)	\$ 33,804,188	New 45-classroom school; replaces old school built in 1959 and relieve crowding at Elizabeth Lane ES.	August 2022	Complete	96 %	The Lansdowne Elementary School future playfield is now at grade and finish seed and straw are scheduled to begin as weather permits. The new playgrounds are scheduled for installation in late February. The site work will be completed in early 2023.
Lincoln Heights Elementary School (17)	\$ 4,588,675	Repurpose and reopen as magnet school.	August 2023	Complete	28 %	The Lincoln Heights repurpose project started construction activities this month, in addition the design and construction teams are continuing the coordination of the Trillium Montessori program requirements into the project.
Mint Hill Elementary School (17)	\$ 29,671,526	New 45-classroom elementary school; relieves crowding at Bain, Lebanon Road, Piney Grove.	August 2022	Complete	99 %	The Mint Hill Elementary School project has moved into the closeout phase. The new signal at the entrance to the schools is currently scheduled to occur spring/summer 2023.
Montclair Elementary School (17)	\$ 28,200,634	New 45-classroom replacement facility replacing school built in 1958.	August 2020	Complete	100 %	Project is complete.

**Monthly Project Status**

2017 Bond Summary

January 2023

Project	Current Project Estimate	Project Scope	** Occupy On	Design Phase	Construction Progress	Project Status
Mountain Island Lake Academy (17)	\$ 13,239,686	K-8 Phase 2 - New gymnasium and specialty classrooms.	August 2023	Complete	40 %	The Mountain Island Lake Academy Gym/Classroom Addition construction manager completed load bearing masonry and structural steel. The mechanical, electrical and plumbing trades continued with rough ins throughout the building.
New Elementary School (Elon, Hawk Ridge, Polo Relief) (17)	\$ 59,141,760	New 45-classroom elementary school to relieve Elon, Hawk Ridge, Polo.		Complete	19 %	The New Elementary School (Elon, Hawk Ridge, Polo Relief) construction manager continued to manage multiple trades through the project. The mason continued with Building B stair, firewall and the load bearing wall at the back of the stage. The steel erector mobilized and began setting the building A steel. The recreation-building slab was poured and load bearing masonry started. The project team is working to identify options to mitigate schedule impacts from the later and anticipated receipt of permits, masonry delays and potential supply chain issues. The road procurement package has been revised and will rebid in early 2023. The new 45-classroom elementary school is located across from the Ardrey Kell High School.
New Elementary School (Hidden Valley, JW Grier, Newell) (17)	\$ 44,079,387	New 45-classroom elementary school; relieves overcrowding at Hidden Valley, J.W. Grier, Newell.	August 2023	Complete	56 %	The New Elementary School (Hidden Valley, JW Grier, Newell Relief) construction manager has paved the bus loop road around back connecting to Northridge Middle School. Stone is set at front staff/visitor lot awaiting good weather to pave. The brick veneer is progressing around the building. Mechanical and Electrical trade partners are progressing with above ceiling rough ins. Due to extended Charlotte Water lead times the installation for the new water tap is now scheduled in late spring. The construction team continues to work through supply chain material delivery issues.

**Monthly Project Status**

2017 Bond Summary

January 2023

Project	Current Project Estimate	Project Scope	** Occupy On	Design Phase	Construction Progress	Project Status
New Elementary School (Windsor, Winterfield, Idlewild Relief) (17)	\$ 45,855,770	New 45-classroom elementary school to relieve Windsor, Winterfield, and Idlewild ES.	August 2023	Complete	46 %	The New Elementary School (Windsor Park, Winterfield, Idlewild Relief) construction manager has progressed with site work including bringing areas to final grade. Brick veneer is currently being installed around the building. Single ply roof membrane has started on classroom wing. The mechanical, electrical, and plumbing contractors are completing in wall rough ins.
New High School (South, Ardrey) (17)	\$ 160,930,460	New 100 classroom high school to relieve South Mecklenburg, Ardrey Kell and Myers Park HS.	August 2024	Complete	17 %	The New High School (South, Ardrey Relief) construction manager continued with footings, below grade masonry installations in addition to load bearing masonry throughout the building. Below slab electrical and plumbing rough ins continue along with slab prep. The mason continues with the installation of CMU walls in the band and auditorium. Blasting to remove rock and provide backfill for the site retaining walls continues. Site work is ongoing including sanitary and storm installations throughout the site.
North Academy of World Languages (17)	\$ 41,739,951	New 66 classroom K-8 Language Immersion facility located on the old J.M. Alexander Middle School site.	August 2021	Complete	100 %	Project is complete.
Northwest School of the Arts (17)	\$ 20,467,000	Replace classroom building built in 1952 and build classroom addition that supports program.	January 2025	Schematic	0 %	The Northwest School of the Arts project is scheduled to receive design documents for in February 2023. The design scope includes a new classroom building to replace the existing visual arts building, Building D demolition and other site improvements. The project is planned to be completed in multiple phases; the car parking modifications are scheduled to begin in the fall of 2023.
Palisades High School (17)	\$ 107,592,534	New 100 classroom high school; relieves crowding at Olympic High School.	August 2022	Complete	99 %	The Palisades High School (fka New High School Olympic Relief) has been occupied by staff and students. The construction manager is in the closeout phase and is working with trade contractors to complete punch list and open issues.
Shamrock Gardens Elementary School (17)	\$ 30,784,692	New 45-classroom replacement facility.	August 2022	Complete	100 %	Project is complete.

**Monthly Project Status**

2017 Bond Summary

January 2023

Project	Current Project Estimate	Project Scope	** Occupy On	Design Phase	Construction Progress	Project Status
Sharon Elementary School (17)	\$ 9,125,862	Add 16 classroom building and increase capacity of cafeteria.	August 2021	Complete	100 %	Project is complete.
South Academy of International Languages (fka New K-8 School (South) (17)	\$ 40,669,909	New 71 classroom K-8 Language Immersion facility located on the old Nations Ford Elementary School site.	August 2021	Complete	100 %	Project is complete.
South Mecklenburg High School (17)	\$ 15,622,927	Renovate/replace two classroom buildings built in 1958 to upgrade learning conditions.	January 2025	Construction Documents	0 %	The South Mecklenburg High School Addition project team has completed their review of the 50% construction documents and comments have been incorporated by the architect. The 95% construction documents are scheduled to be delivered in late February for final review comments. Mobiles will be relocated the summer 2023 to allow construction of the new building to begin in the fall of 2023 and be available for occupancy January 2025.
South Pine Academy (17)	\$ 30,438,977	New 45-classroom elementary school to relieve Nations Ford, Sterling, and Steele Creek.	August 2021	Complete	100 %	Project is complete.
West Charlotte High School (17)	\$ 104,413,163	New 100 classroom school to replace current facility built in 1954.	August 2022	Complete	92 %	The West Charlotte High School construction manager continues to work on the phase two (demolition/sitework) phase of the project. Site grading continues as areas for parking lots and future ball fields are balanced. Cast in place retaining walls are being formed and poured. The concessions and bathrooms at athletic fields building pads are been brought to grade and staked for footings. The team continues to coordinate the project with school administration. The demolition/and sitework phase is scheduled for completion in August 2023.
West Mecklenburg High School (17)	\$ 6,259,479	Provide new gymnasium, the existing gymnasium will become the auxilliary.	August 2021	Complete	100 %	Project is complete.

# MONTHLY PROJECT PHOTOS



New ES Elon Park, Hawk Ridge, Polo Ridge



# PROJECT PROGRESS PHOTOS



New ES Elon Park, Hawk Ridge, Polo Ridge

# PROJECT PROGRESS PHOTOS

---



New ES Elon Park, Hawk Ridge, Polo Ridge

# PROJECT PROGRESS PHOTOS



New HS Ardrey Kell, South Mecklenburg

# PROJECT PROGRESS PHOTOS

---



New HS Ardrey Kell, South Mecklenburg

# PROJECT PROGRESS PHOTOS

---



New HS Ardrey Kell, South Mecklenburg



New ES Windsor, Winterfield, Idlewild

# PROJECT PROGRESS PHOTOS

---



New ES Windsor, Winterfield, Idlewild

# PROJECT PROGRESS PHOTOS

---



New ES Windsor, Winterfield, Idlewild



# PROJECT PROGRESS PHOTOS

---



New ES Hidden Valley, JW Grier, Newell

# PROJECT PROGRESS PHOTOS

---



New ES Hidden Valley, JW Grier, Newell

# PROJECT PROGRESS PHOTOS

---



New ES Hidden Valley, JW Grier, Newell



Mountain Island Lake Academy

# PROJECT PROGRESS PHOTOS

---



Mountain Island Lake Academy

# PROJECT PROGRESS PHOTOS

---



Mountain Island Lake Academy

# PROJECT PROGRESS PHOTOS



J.T. Williams

# MWSBE PARTICIPATION REPORT



# Contract Status Report - MWSBE Participation Commitments

Report Date 2/7/2023

Charlotte-Mecklenburg Schools

2/7/2023 8:46:27 AM

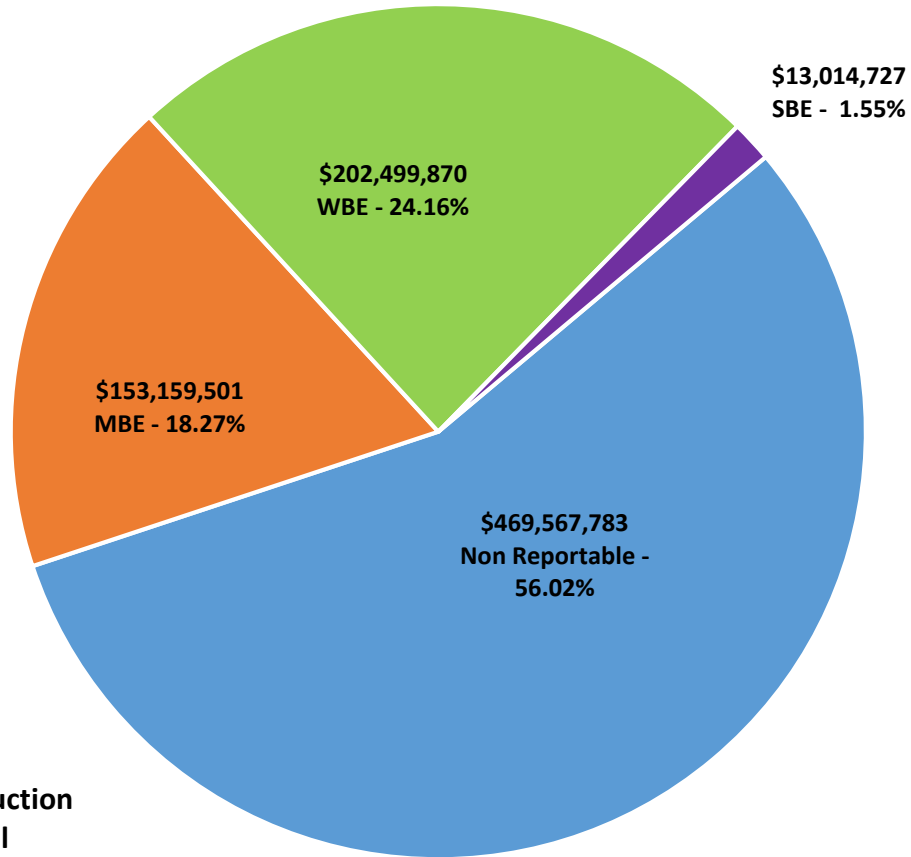
2017 Bond Projects

January 2023 Monthly Bond Report

Facility	Contract Amount	African American MBE\$	%	Other MBE \$	%	Total MBE \$	%	Other WBE \$	%	Other SBE \$	%	Total	%
<u>Briarwood Elementary School (17)</u>	\$28,424,691	\$4,075,384	14.34%	\$2,135,619	7.51%	\$6,211,003	21.85%	\$2,187,249	7.69%	\$187,102	0.66%	\$8,585,354	30.20%
<u>Career and Technology Education (17)</u>	\$5,596,312	\$522,870	9.34%	\$315,278	5.63%	\$838,148	14.98%	\$203,576	3.64%	\$65,475	1.17%	\$1,107,199	19.78%
<u>Charlotte-Mecklenburg Academy (17)</u>	\$17,035,852	\$198,536	1.17%	\$1,029,192	6.04%	\$1,227,728	7.21%	\$928,554	5.45%	\$13,200	0.08%	\$2,169,482	12.73%
<u>Collinswood Language Academy (17)</u>	\$38,527,704	\$649,287	1.69%	\$1,613,103	4.19%	\$2,262,390	5.87%	\$11,362,566	29.49%	\$9,328	0.02%	\$13,634,284	35.39%
<u>E.E. Waddell (17)</u>	\$2,065,933	\$0	0.00%	\$0	0.00%	\$0	0.00%	\$10,950	0.53%	\$0	0.00%	\$10,950	0.53%
<u>East Mecklenburg High School (17)</u>	\$12,670,859	\$603,811	4.77%	\$532,460	4.20%	\$1,136,271	8.97%	\$490,382	3.87%	\$681,075	5.38%	\$2,307,728	18.21%
<u>Garinger High School (17)</u>	\$4,335,847	\$407,299	9.39%	\$1,710,324	39.45%	\$2,117,623	48.84%	\$944,393	21.78%	\$270,990	6.25%	\$3,333,006	76.87%
<u>Harding High School (17)</u>	\$13,015,986	\$1,504,505	11.56%	\$310,356	2.38%	\$1,814,862	13.94%	\$4,010,831	30.81%	\$176	0.00%	\$5,825,869	44.76%
<u>JT Williams (17)</u>	\$15,280,211	\$2,000	0.01%	\$20,000	0.13%	\$22,000	0.14%	\$988,115	6.47%	\$51,800	0.34%	\$1,061,915	6.95%
<u>Lansdowne Elementary School (17)</u>	\$30,705,939	\$2,617,363	8.52%	\$788,126	2.57%	\$3,405,489	11.09%	\$2,051,155	6.68%	\$223,625	0.73%	\$5,680,270	18.50%
<u>Lincoln Heights Elementary School (17)</u>	\$2,179,240	\$92,274	4.23%	\$18,800	0.86%	\$111,074	5.10%	\$0	0.00%	\$74,503	3.42%	\$185,577	8.52%
<u>Mint Hill Elementary School (17)</u>	\$26,323,261	\$5,223,675	19.84%	\$18,319,957	69.60%	\$23,543,632	89.44%	\$1,201,089	4.56%	\$308,370	1.17%	\$25,053,091	95.17%
<u>Montclair Elementary School (17)</u>	\$26,093,784	\$3,617,952	13.87%	\$2,260,381	8.66%	\$5,878,333	22.53%	\$5,731,016	21.96%	\$517,257	1.98%	\$12,126,605	46.47%
<u>Mountain Island Lake Academy (17)</u>	\$12,499,991	\$129,862	1.04%	\$664,719	5.32%	\$794,581	6.36%	\$908,098	7.26%	\$30,300	0.24%	\$1,732,979	13.86%
<u>New Elementary School (Elon, Hawk)</u>	\$44,133,068	\$5,746,496	13.02%	\$991,715	2.25%	\$6,738,211	15.27%	\$8,295,398	18.80%	\$1,124,011	2.55%	\$16,157,620	36.61%
<u>New Elementary School (Hidden Vall)</u>	\$38,657,270	\$5,493,635	14.21%	\$4,211,754	10.90%	\$9,705,389	25.11%	\$2,237,544	5.79%	\$25,600	0.07%	\$11,968,533	30.96%
<u>New Elementary School (Windsor, W)</u>	\$41,219,974	\$8,807,507	21.37%	\$3,356,831	8.14%	\$12,164,338	29.51%	\$26,466,433	64.21%	\$7,440	0.02%	\$38,638,211	93.74%
<u>New High School (South, Ardrey) (17)</u>	\$132,698,981	\$1,867,976	1.41%	\$3,365,372	2.54%	\$5,233,348	3.94%	\$7,188,271	5.42%	\$3,913,152	2.95%	\$16,334,771	12.31%
<u>North Academy of World Languages (17)</u>	\$38,090,783	\$1,688,775	4.43%	\$1,575,863	4.14%	\$3,264,638	8.57%	\$3,471,693	9.11%	\$437,418	1.15%	\$7,173,748	18.83%
<u>Northwest School of the Arts (17)</u>	\$4,361,865	\$0	0.00%	\$37,000	0.85%	\$37,000	0.85%	\$27,850	0.64%	\$0	0.00%	\$64,850	1.49%
<u>Palisades High School (17)</u>	\$98,207,798	\$13,504,638	13.75%	\$7,587,760	7.73%	\$21,092,398	21.48%	\$13,786,630	14.04%	\$2,996,568	3.05%	\$37,875,596	38.57%
<u>Shamrock Gardens Elementary School (17)</u>	\$28,035,161	\$2,366,885	8.44%	\$1,472,922	5.25%	\$3,839,807	13.70%	\$23,207,193	82.78%	\$274,496	0.98%	\$27,321,497	97.45%
<u>Sharon Elementary School (17)</u>	\$8,534,491	\$326,844	3.83%	\$283,497	3.32%	\$610,341	7.15%	\$926,873	10.86%	\$217,984	2.55%	\$1,755,197	20.57%
<u>South Academy of International Languages (17)</u>	\$37,073,825	\$6,023,141	16.25%	\$2,431,071	6.56%	\$8,454,212	22.80%	\$10,911,546	29.43%	\$347,799	0.94%	\$19,713,557	53.17%

Facility	Contract Amount	African American MBE\$	%	Other MBE \$	%	Total MBE \$	%	Other WBE \$	%	Other SBE \$	%	Total	%
<u>South Mecklenburg High School (17)</u>	\$1,200,154	\$0	0.00%	\$0	0.00%	\$0	0.00%	\$0	0.00%	\$0	0.00%	\$0	0.00%
<u>South Pine Academy (17)</u>	\$26,161,268	\$916,165	3.50%	\$19,205,893	73.41%	\$20,122,058	76.92%	\$4,342,256	16.60%	\$237,754	0.91%	\$24,702,068	94.42%
<u>West Charlotte High School (17)</u>	\$95,302,242	\$7,823,736	8.21%	\$3,917,680	4.11%	\$11,741,415	12.32%	\$68,556,456	71.94%	\$715,530	0.75%	\$81,013,401	85.01%
<u>West Mecklenburg High School (17)</u>	\$9,809,391	\$283,809	2.89%	\$509,403	5.19%	\$793,212	8.09%	\$2,063,752	21.04%	\$283,775	2.89%	\$3,140,739	32.02%
<b>Grandtotal</b>	<b>\$838,241,880</b>	<b>\$74,494,426</b>	<b>8.89%</b>	<b>\$78,665,075</b>	<b>9.38%</b>	<b>\$153,159,501</b>	<b>18.27%</b>	<b>\$202,499,870</b>	<b>24.16%</b>	<b>\$13,014,727</b>	<b>1.55%</b>	<b>\$368,674,097</b>	<b>43.98%</b>

### MWSBE Participation 2017 Bond Projects



**Design and Construction  
Contract Total  
\$838,241,880**

# PROJECT CONTROLS

**CHARLOTTE-MECKLENBURG BOARD OF EDUCATION  
2013 BOND SERIES-CAPITAL IMPROVEMENT PROGRAM  
BUDGET STATUS REPORT**

	Original Project Budget	Current Project Budget	Committed Amount	Approved Change Orders	Total Committed	Pending Commitments	To Be Committed	Prev Paid To Date	Paid To Date	Balance To Complete	Monthly Expenditure
	(A)	(B)	(C)	(D)	(E)=C+D	(F)	(G)=(B-E-F)	(H)	(I)	(J)=(B-I)	(K)=(I-H)
<b><u>A. REPLACEMENT &amp; RENOVATIONS</u></b>											
1 Career & Technology Education Institutes Phase 1:	\$8,640,000	\$18,697,857	\$6,811,184	\$11,886,477	\$18,697,661	\$0	\$196	\$17,707,722	\$18,189,690	\$508,167	\$481,968
2 Davidson K-8 Conversion	\$9,500,000	\$13,461,149	\$2,131,151	\$11,329,998	\$13,461,149	\$0	\$0	\$13,461,149	\$13,461,149	\$0	\$0
3 J.M. Alexander Middle Replacement	\$30,672,000	\$29,845,539	\$4,502,518	\$25,343,021	\$29,845,539	\$0	\$0	\$29,845,539	\$29,845,539	\$0	\$0
4 Nations Ford Elementary Replacement	\$19,440,000	\$19,231,604	\$3,958,871	\$15,272,733	\$19,231,604	\$0	\$0	\$19,231,604	\$19,231,604	\$0	\$0
5 Northwest School of the Arts	\$12,420,000	\$12,868,718	\$2,047,917	\$10,820,801	\$12,868,718	\$0	\$0	\$12,868,719	\$12,868,719	\$0	\$0
6 Oakhurst STEAM Magnet Elementary/Starmount	\$5,940,000	\$5,407,812	\$3,471,397	\$1,936,415	\$5,407,812	\$0	\$0	\$5,407,812	\$5,407,812	\$0	\$0
7 Pre-K-8 Conversions Phase II: Ashley Park/ Bruns	\$24,732,000	\$19,700,807	\$4,167,671	\$15,533,138	\$19,700,809	\$0	\$0	\$19,700,807	\$19,700,807	\$0	\$0
8 Selwyn Elementary	\$2,592,000	\$4,624,831	\$744,799	\$3,880,032	\$4,624,831	\$0	\$0	\$4,624,831	\$4,624,831	\$0	\$0
9 Statesville Road Elementary	\$20,340,000	\$20,648,509	\$5,081,473	\$15,567,037	\$20,648,509	\$0	\$0	\$20,648,509	\$20,648,509	\$0	\$0
10 West Mecklenburg HS	\$0	\$3,993,543	\$3,993,543	\$0	\$3,993,543	\$0	\$0	\$3,993,543	\$3,993,543	\$0	\$0
<b>Total Replacement &amp; Renovations</b>	<b>\$134,276,000</b>	<b>\$148,480,367</b>	<b>\$36,910,523</b>	<b>\$111,569,652</b>	<b>\$148,480,175</b>	<b>\$0</b>	<b>\$197</b>	<b>\$147,490,234</b>	<b>\$147,972,202</b>	<b>\$508,165</b>	<b>\$481,968</b>
<b><u>B. RESPONSE TO ENROLLMENT GROWTH</u></b>											
1 East Mecklenburg High Addition	\$12,744,000	\$12,083,804	\$4,465,200	\$7,618,603	\$12,083,803	\$0	\$0	\$12,083,803	\$12,083,803	\$0	\$0
2 Myers Park High Addition	\$22,248,000	\$11,040,942	\$1,207,493	\$9,833,448	\$11,040,942	\$0	\$0	\$11,040,941	\$11,040,941	\$0	\$0
3 Northridge Middle Addition	\$6,448,000	\$6,366,170	\$2,114,306	\$4,251,865	\$6,366,171	\$0	\$0	\$6,366,171	\$6,366,171	\$0	\$0
4 Olympic High Addition/Renovation	\$8,964,000	\$8,947,310	\$2,002,694	\$6,944,615	\$8,947,310	\$0	\$0	\$8,947,310	\$8,947,310	\$0	\$0
5 South Mecklenburg High Addition	\$18,360,000	\$16,307,355	\$2,922,282	\$13,385,073	\$16,307,355	\$0	\$0	\$16,307,355	\$16,307,355	\$0	\$0
6 Charlotte East Language Academy (FKA -New Lang	\$30,376,000	\$31,387,929	\$5,740,182	\$25,647,747	\$31,387,929	\$0	\$0	\$31,387,929	\$31,387,929	\$0	\$0
7 Rea Farms STEAM Academy	\$31,376,000	\$40,476,000	\$9,074,364	\$29,821,441	\$38,895,805	\$0	\$1,580,195	\$38,898,906	\$38,898,906	\$1,577,094	\$0
8 Renaissance West STEAM Academy (FKA New Pre-	\$30,376,000	\$31,698,952	\$5,667,388	\$26,031,564	\$31,698,952	\$0	\$0	\$31,698,952	\$31,698,952	\$0	\$0
9 New High School - South Meck/Ardrey Kell Relief *	\$0	\$9,278,699	\$9,278,699	\$0	\$9,278,699	\$0	\$0	\$9,278,699	\$9,278,699	\$0	\$0
<b>Total Response to Enrollment Growth</b>	<b>\$160,892,000</b>	<b>\$167,587,161</b>	<b>\$42,472,609</b>	<b>\$123,534,357</b>	<b>\$166,006,966</b>	<b>\$0</b>	<b>\$1,580,195</b>	<b>\$166,010,066</b>	<b>\$166,010,066</b>	<b>\$1,577,095</b>	<b>\$0</b>
<b><u>C. CONTINGENCY</u></b>											
	\$0	\$0	\$0	\$0	\$0	\$0	\$0	\$0	\$0	\$0	\$0
<b>Total Contingency</b>	<b>\$0</b>	<b>\$0</b>	<b>\$0</b>	<b>\$0</b>	<b>\$0</b>	<b>\$0</b>	<b>\$0</b>	<b>\$0</b>	<b>\$0</b>	<b>\$0</b>	<b>\$0</b>
<b>TOTAL LOCAL BOND PROGRAM</b>	<b>\$295,168,000</b>	<b>\$316,067,527</b>	<b>\$79,383,132</b>	<b>\$235,104,009</b>	<b>\$314,487,141</b>	<b>\$0</b>	<b>\$1,580,392</b>	<b>\$313,500,300</b>	<b>\$313,982,268</b>	<b>\$2,085,259</b>	<b>\$481,968</b>

Original project estimated costs approved by the Board Of Education on July 23, 2013 and approved by the voters of Mecklenburg County on November 5, 2013.

Note: Mecklenburg County's appropriated interest from COPS to increase funding for the 2013 Bond Program.

**CHARLOTTE-MECKLENBURG BOARD OF EDUCATION  
2017 BOND SERIES-CAPITAL IMPROVEMENT PROGRAM  
BUDGET STATUS REPORT**

	Original Project Budget	Current Project Budget	Committed Amount	Approved Change Orders	Total Committed	Pending Commitments	To Be Committed	Prev Paid To Date	Paid To Date	Balance To Complete	Monthly Expenditure
	(A)	(B)	(C)	(D)	(E)=C+D	(F)	(G)=(B-E-F)	(H)	(I)	(J)=(B-I)	(K)=(I-H)
<b><u>A. REPLACEMENT &amp; RENOVATIONS</u></b>											
1 Briarwood Elementary *	\$29,091,619	\$31,243,066	\$4,730,586	\$26,421,879	\$31,152,464	\$0	\$90,602	\$31,101,615	\$31,101,615	\$141,451	\$0
2 Bruns Academy Replacement	\$34,207,808	\$40,590,679	\$4,028,580	\$24,431,331	\$28,459,911	\$0	\$12,130,768	\$1,415,531	\$1,648,429	\$38,942,251	\$232,898
3 Career & Technology Education Upgrades	\$10,101,734	\$9,659,765	\$2,290,761	\$3,768,875	\$6,059,636	(\$176)	\$3,600,305	\$5,654,167	\$5,656,872	\$4,002,893	\$2,705
4 Collinswood K-8 *	\$44,172,540	\$41,412,015	\$4,927,263	\$36,484,752	\$41,412,015	\$0	\$0	\$41,401,384	\$41,401,384	\$10,631	\$0
5 East Mecklenburg HS	\$12,771,594	\$10,231,911	(\$1,651,251)	\$11,852,493	\$10,201,242	(\$31,000)	\$61,670	\$10,084,792	\$10,085,792	\$146,119	\$1,000
6 Garinger HS	\$13,936,979	\$5,236,979	\$1,589,910	\$3,560,359	\$5,150,269	\$11,800	\$74,910	\$3,872,396	\$4,054,365	\$1,182,614	\$181,969
7 Harding University High *	\$18,330,263	\$13,747,878	\$2,045,267	\$11,702,610	\$13,747,877	\$0	\$0	\$13,747,877	\$13,747,877	\$0	\$0
8 Charlotte-Mecklenburg Academy (FKA -EC Specialty	\$18,957,960	\$17,699,220	\$2,175,504	\$15,523,717	\$17,699,220	\$0	\$0	\$17,699,220	\$17,699,220	\$0	\$0
9 Lansdowne Elementary	\$29,391,270	\$33,804,188	\$3,982,547	\$29,395,540	\$33,378,087	\$33,075	\$393,026	\$30,536,872	\$30,724,985	\$3,079,203	\$188,113
10 Lincoln Heights Elementary	\$3,740,478	\$4,588,675	\$2,597,829	\$77,687	\$2,675,516	\$3,000	\$1,910,159	\$424,357	\$591,039	\$3,997,636	\$166,682
11 Montclair Elementary Replacement *	\$28,559,390	\$28,200,634	\$2,426,761	\$25,773,873	\$28,200,634	\$0	\$0	\$28,200,634	\$28,200,634	\$0	\$0
12 Mountain Island k-8	\$9,218,439	\$13,239,686	\$1,716,621	\$11,344,864	\$13,061,485	\$10,000	\$168,201	\$5,803,697	\$6,256,081	\$6,983,605	\$452,384
13 Northwest School of the Arts	\$17,632,202	\$20,467,000	\$5,095,299	\$117,644	\$5,212,943	\$0	\$15,254,057	\$422,763	\$477,513	\$19,989,487	\$54,750
14 Shamrock Gardens Elementary *	\$29,890,351	\$30,784,692	\$3,466,915	\$27,080,324	\$30,547,239	(\$759,395)	\$996,847	\$28,770,930	\$28,784,541	\$2,000,151	\$13,610
15 Sharon Elementary	\$7,706,528	\$9,125,862	\$1,430,125	\$7,675,679	\$9,105,804	\$0	\$20,058	\$9,067,791	\$9,067,791	\$58,071	\$0
16 South Mecklenburg HS	\$13,352,143	\$15,622,927	\$1,769,924	\$94,238	\$1,864,162	\$0	\$13,758,765	\$517,521	\$553,313	\$15,069,614	\$35,792
17 E.E. Waddell Magnet HS	\$4,571,709	\$5,137,367	\$2,829,359	\$98,796	\$2,928,155	\$12,000	\$2,197,212	\$1,888,533	\$1,965,530	\$3,171,837	\$76,996
18 West Charlotte HS Replacement	\$109,977,166	\$104,413,163	\$12,077,189	\$91,566,338	\$103,643,527	\$65,371	\$704,264	\$91,619,176	\$91,716,761	\$12,696,402	\$97,585
19 West Mecklenburg HS	\$11,065,440	\$6,259,479	(\$2,371,639)	\$8,631,118	\$6,259,479	\$0	\$0	\$6,260,654	\$6,260,654	\$0	\$0
20 John Taylor Williams	\$13,964,339	\$17,032,600	\$3,563,993	\$12,300,008	\$15,864,001	\$183,268	\$985,332	\$6,527,331	\$7,426,146	\$9,606,454	\$898,815
<b>Total Replacement &amp; Renovations</b>	<b>\$460,639,952</b>	<b>\$458,497,787</b>	<b>\$58,721,544</b>	<b>\$347,902,124</b>	<b>\$406,623,668</b>	<b>(\$472,057)</b>	<b>\$52,346,176</b>	<b>\$335,017,244</b>	<b>\$337,420,542</b>	<b>\$121,077,245</b>	<b>\$2,403,298</b>
<b><u>B. RESPONSE TO ENROLLMENT GROWTH</u></b>											
1 South Academy of International Languages	\$45,359,367	\$40,669,909	\$5,953,333	\$34,716,576	\$40,669,909	\$0	\$0	\$40,580,696	\$40,584,335	\$85,574	\$3,639
2 North Academy of World Languages (FKA - New K-8	\$45,359,367	\$41,739,951	\$6,022,055	\$35,717,896	\$41,739,951	\$0	\$0	\$41,728,256	\$41,733,142	\$6,809	\$4,886
3 South Pine Academy (FKA - New ES Nations Ford, S	\$29,173,829	\$30,438,977	\$6,793,874	\$23,645,103	\$30,438,977	\$0	\$0	\$30,466,234	\$30,474,698	\$0	\$8,465
4 Mint Hill Elementary School	\$29,988,332	\$29,671,526	\$3,295,149	\$26,377,557	\$29,672,706	(\$313,568)	\$312,388	\$27,872,514	\$28,455,114	\$1,216,412	\$582,600
5 New Elementary School - Windsor Park Relief *	\$30,422,230	\$45,855,770	\$13,408,930	\$31,659,394	\$45,068,324	\$110,113	\$677,333	\$13,416,513	\$18,152,761	\$27,703,010	\$4,736,248
6 New Elementary School - Elon/Hawk Ridge Relief *	\$30,426,712	\$59,141,761	\$16,608,393	\$42,098,607	\$58,707,000	\$13,400	\$421,361	\$23,265,642	\$24,479,946	\$34,661,814	\$1,214,304
7 New Elementary School - Hidden Valley Relief	\$30,518,345	\$44,079,387	\$6,763,692	\$36,564,145	\$43,327,837	\$0	\$751,550	\$18,810,590	\$20,333,122	\$23,746,265	\$1,522,532
8 Palisades High School	\$109,908,793	\$107,592,534	\$11,081,650	\$96,401,797	\$107,483,447	\$19,742	\$89,345	\$103,188,516	\$103,515,008	\$4,077,527	\$326,491
9 New High School - South Meck/Ardrey Kell Relief *	\$110,287,621	\$160,930,460	\$11,834,434	\$125,664,701	\$137,499,135	\$2,173	\$23,429,152	\$27,020,383	\$31,513,415	\$129,417,045	\$4,493,032
<b>Total Response to Enrollment Growth</b>	<b>\$461,444,596</b>	<b>\$560,120,275</b>	<b>\$81,761,510</b>	<b>\$452,845,775</b>	<b>\$534,607,285</b>	<b>(\$168,140)</b>	<b>\$25,681,130</b>	<b>\$326,349,344</b>	<b>\$339,241,541</b>	<b>\$220,878,734</b>	<b>\$12,892,197</b>
<b><u>C. CONTINGENCY</u></b>											
	\$0	\$0	\$0	\$0	\$0	\$0	\$0	\$0	\$0	\$0	\$0
<b>Total Contingency</b>	<b>\$0</b>	<b>\$0</b>	<b>\$0</b>	<b>\$0</b>	<b>\$0</b>	<b>\$0</b>	<b>\$0</b>	<b>\$0</b>	<b>\$0</b>	<b>\$0</b>	<b>\$0</b>

**CHARLOTTE-MECKLENBURG BOARD OF EDUCATION  
2017 BOND SERIES-CAPITAL IMPROVEMENT PROGRAM  
BUDGET STATUS REPORT**

	Original Project Budget	Current Project Budget	Committed Amount	Approved Change Orders	Total Committed	Pending Commitments	To Be Committed	Prev Paid To Date	Paid To Date	Balance To Complete	Monthly Expenditure
	(A)	(B)	(C)	(D)	(E)=C+D	(F)	(G)=(B-E-F)	(H)	(I)	(J)=(B-I)	(K)=(I-H)
<b>TOTAL LOCAL BOND PROGRAM</b>	<b>\$922,084,548</b>	<b>\$1,018,618,062</b>	<b>\$140,483,054</b>	<b>\$800,747,899</b>	<b>\$941,230,953</b>	<b>(\$640,196)</b>	<b>\$78,027,306</b>	<b>\$661,366,588</b>	<b>\$676,662,083</b>	<b>\$341,955,978</b>	<b>\$15,295,496</b>

Original project estimated costs approved by the Board Of Education on July 25, 2017 approved by the voters of Mecklenburg County on November 7, 2017.

\*Project included in \$33.2M early funding approved by Board Of Education on August 9, 2016 and Mecklenburg Board of County Commissioners on September 6, 2016. On February 19, 2019 an additional \$8M was approved for New Elementary School - Elon/Hawk Ridge Relief site.

\*Current Budget includes an additional \$89.2M to fund increase land and construction costs. The additional funds were approved by the Board of County Commissioners on June 16, 2020.

The New Elementary School - Elon/Hawk Ridge Relief current Budget includes 6.8M for Park and Recreation Project.

Current Budget reflects a reclass of \$7.4M in expenditures to 2007 Bond Program.

**Charlotte-Mecklenburg Board of Education**  
**Approved Construction or Repair Change Orders\***  
**Reporting Period: January 2023**

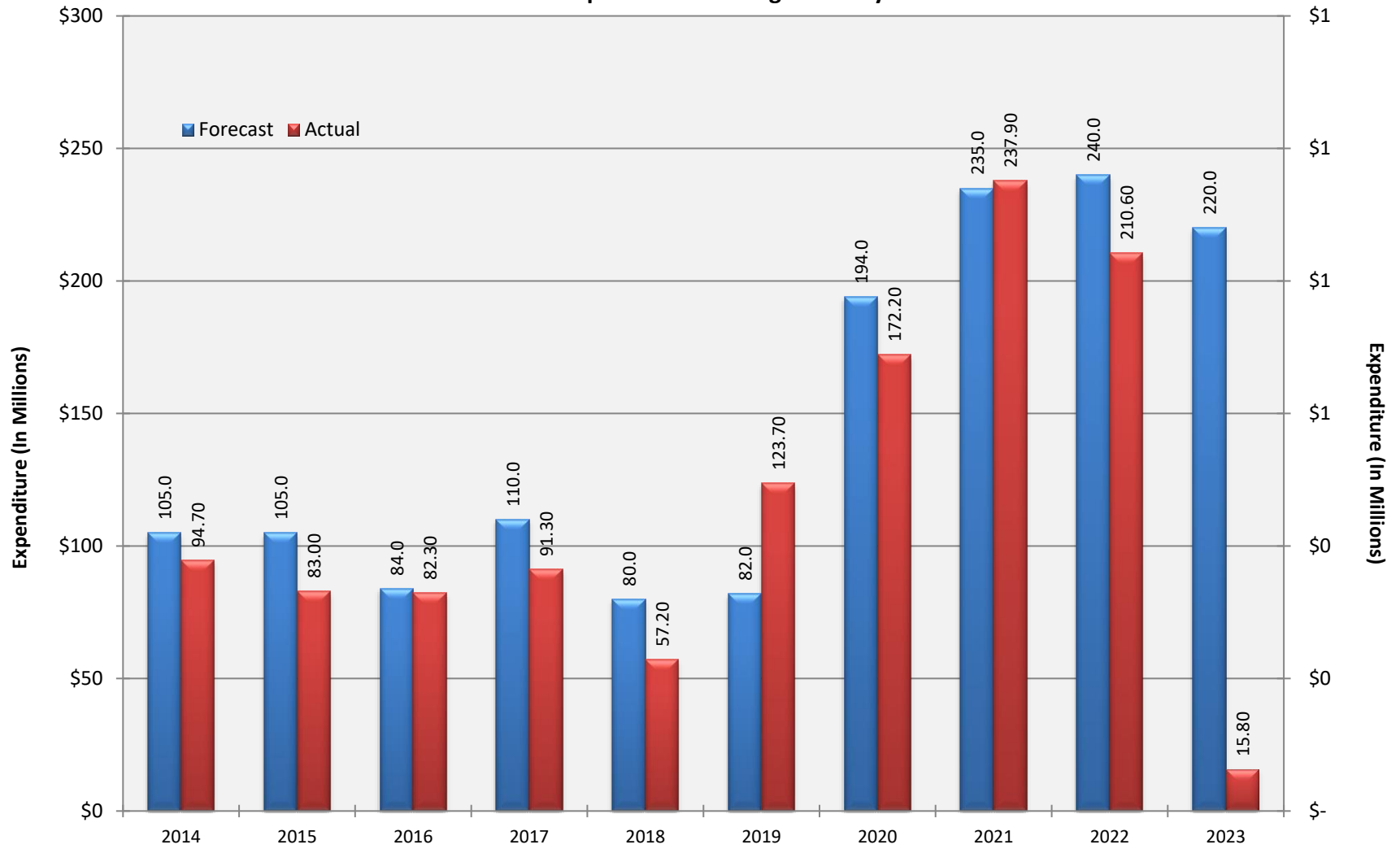
Funding Source	Project Name	Contractor	Description	Change Order Amount	Revised Contract Value
None this reporting period					

\* Not previously presented to the Board of Education for Approval (less than \$90,000)



# 10 YEAR EXPENDITURE SUMMARY

Forecast Expenditure versus  
Actual Expenditures through January 2023



# GLOSSARY

# Glossary

---

---

- **Project Management** – This section includes updates from our project managers and describes the currently active construction projects. This includes from Board of Education award thru final completion.
- **Design and Bidding** – This section contains updates from our design managers on the projects currently in the design phase. This phase from design award to Board of Education award of construction.
- **Controls** – Section includes misc. updates from controls group including expenditures, related Board of Education awards during the reporting period, cash flow information. This section covers all projects from approved bond through final expenditures and bond close with the county.
- **MWSBE** – Contains updates from the MWSBE Director and team, including current activity and summaries of the participation by MWSBE providers on our program.
- **Bond Progress Summary** – Provides a summary of bond financials including bond value, committed/pending amounts, paid to date, expended this month.
- **Project Procurement Dates** - Next 90 Days major project bid activity.
- **Mobile Swing Space Utilization** – Includes a summary of program related swing space currently in use and the schedule of use.
- **Bond Summary Schedule** – Current program summary schedule including planned design, construction and FF&E. These activities are fed from detailed schedules and are fine-tuned as project information is available.
- **Project Contractor Teams**; Provides summary of turnover dates for completed/closed projects since 2010 including architects/designers and contractors.
- **School Site Location Maps** – General location of bond projects (2017) by type.
- **Project Status Report** – This section of the report provides a summary of the bond project scope, current estimate (all sources), planned occupancy/actual occupancy date. It also provides a current status of the design phase, construction progress and a brief update. The report currently includes 2013 and 2017 bond projects that have or will be completed after to August 2016.
- **MWSBE Participation Report** – The MWSBE report provides a summary of the participation on the 2013 & 2017 Bond funded projects.
- **Project Progress Photos** – Includes photos of active construction projects.
- **Budget Summary Reports** – These reports are by funding source and summarize financial activity to date on the projects. This includes original and current project estimates, committed values, amounts paid to date, balances and monthly expenditures.
- **Change Orders < \$90,000** – This month's approved construction or repair change orders < \$90,000.
- **Expenditure Summary** – Provides a summary of Bond Expenditures by calendar year.