

Design and Construction Information Meeting

Mountain Island Lake Academy Gym & Classroom Addition

Thursday, November 4th 5:30 pm - 6:30 pm

Virtual Meeting:

<https://zoom.us/j/97762341536>

Dial: +1 (301) 715-8592



This meeting is intended to communicate information about the building addition and site design to the families of Mountain Island Lake Academy.

COMMUNITY INFORMATION MEETING AGENDA

5:30 - 6:30 P.M.

- Welcome and introduction
- Schedule overview
- Presentation of site design
- Presentation of building design
- Q&A
- Closing



Q&A

WEBINAR QUESTIONS FROM ATTENDEES

- Please use the Q & A function to ask questions to the panelists
- Questions will be responded to at the conclusion of the presentation

HOW TO USE WEBINAR Q & A

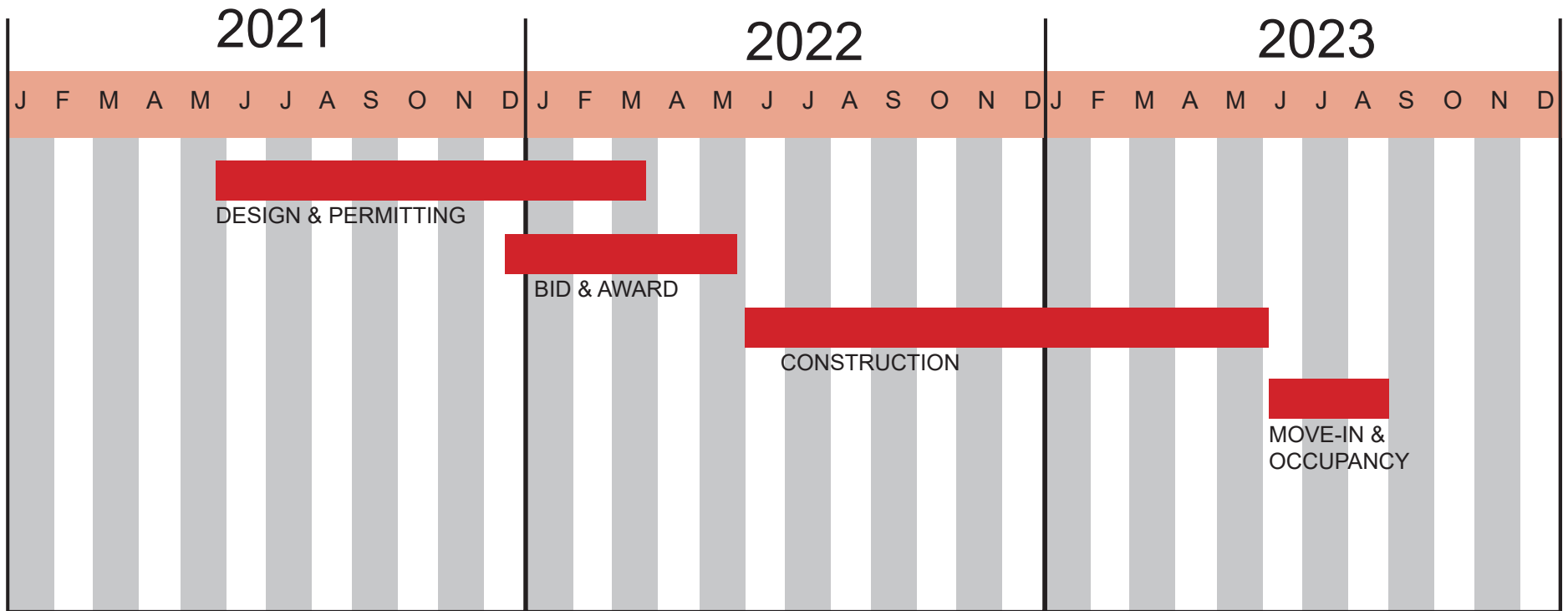
1. In your controls at the bottom window, click or tap Q&A.
2. When you click on Q&A, the Q&A window will appear. It will be on the right if you are not in full screen. If you are in full screen, it will appear in a window that you can move around your screen.
3. Type your message into the Q&A window.
4. Press Enter to send your message.



DESIGN + CONSTRUCTION INFORMATION MEETING
EXISTING CONDITIONS



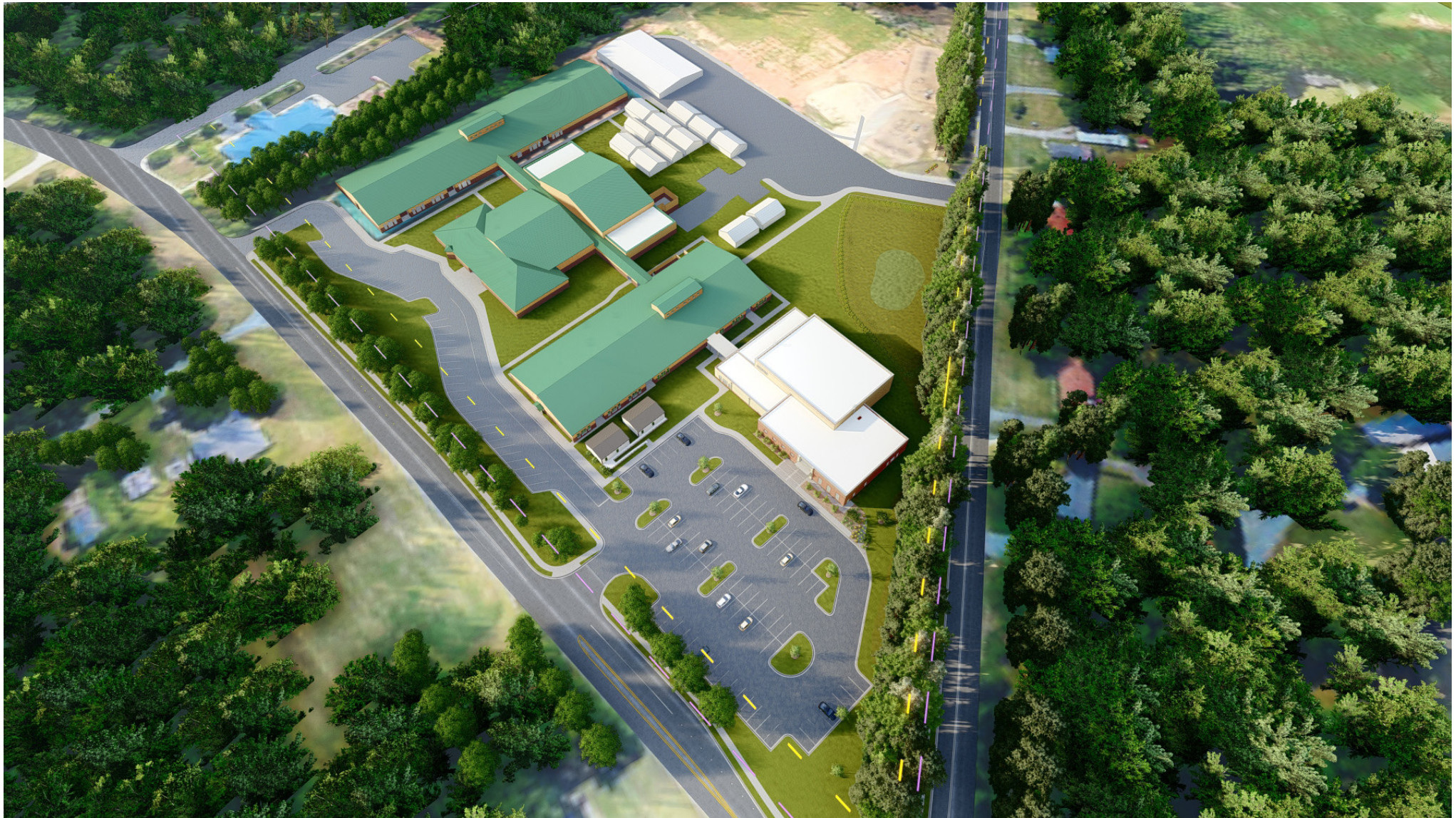
DESIGN + CONSTRUCTION INFORMATION MEETING SCHEDULE OVERVIEW



DESIGN + CONSTRUCTION INFORMATION MEETING
PROJECT SITE - SITE PLAN



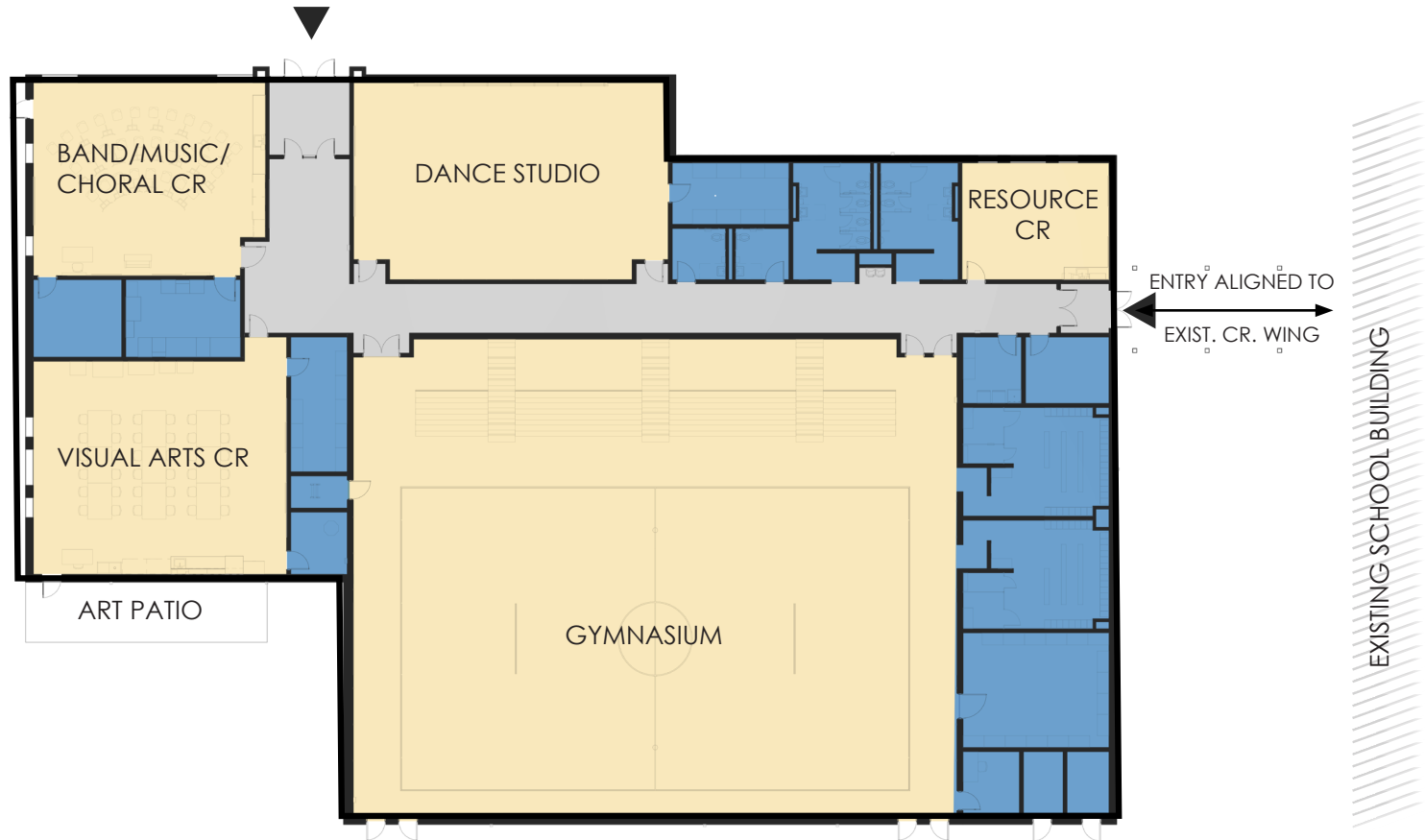
DESIGN + CONSTRUCTION INFORMATION MEETING
PROJECT SITE - SITE PLAN



DESIGN + CONSTRUCTION INFORMATION MEETING
LEVEL 1 FLOOR PLAN



EXPANDED PARKING LOT



■ SUPPORT
■ CIRCULATION

TO PLAY AREAS/
BUS LOOP



DESIGN + CONSTRUCTION INFORMATION MEETING
INTERIOR VIEW



DESIGN + CONSTRUCTION INFORMATION MEETING
INTERIOR VIEW



DESIGN + CONSTRUCTION INFORMATION MEETING
INTERIOR VIEW



DESIGN + CONSTRUCTION INFORMATION MEETING
INTERIOR VIEW



DESIGN + CONSTRUCTION INFORMATION MEETING
AERIAL VIEW FROM PLEASANT GROVE RD



DESIGN + CONSTRUCTION INFORMATION MEETING
NORTH ELEVATION VIEW





Q & A