



East Mecklenburg High School - Classroom Addition Project

# TEAM and AGENDA



## DESIGN TEAM



## CONSTRUCTION MANAGER



## AGENDA

Classroom Addition – Community Information Meeting  
October 01, 2020, 5:30 – 6:30 PM

- Introductions
- Planning and Design
  - Project Goals
    - Site Planning
    - Elevations
    - Floor Plans
  - Logistics and Construction
    - Construction Logistics
    - Schedule
- Additional Information & Questions?



# PLANNING and DESIGN

# PROJECT CONSIDERATIONS



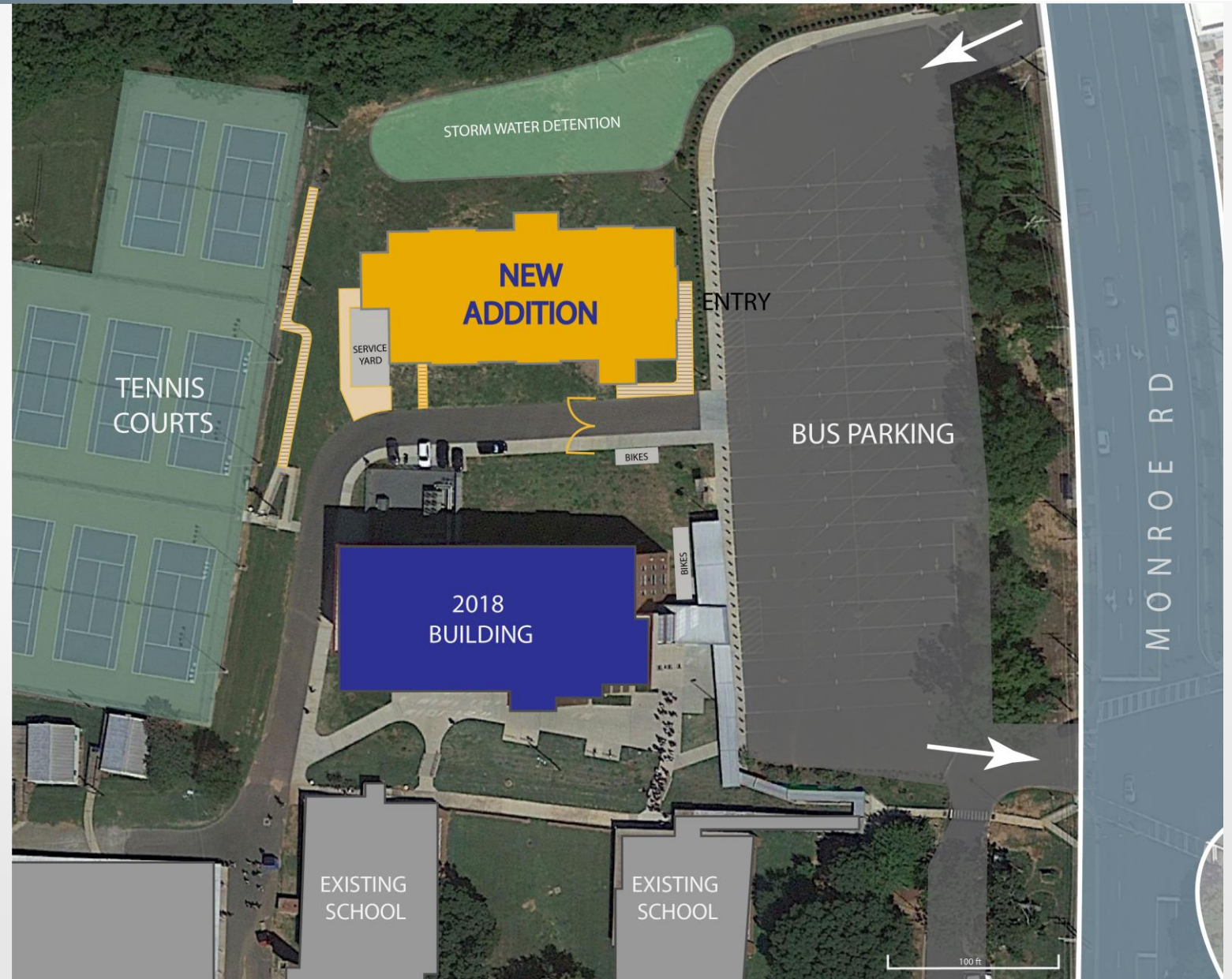
- 2017 Bond & Information Gathering
- Separate Student and Construction Traffic
- Minimize Impact on School Operations
- Minimize Impact on Community
- Site Considerations



# SITE & PLANNING



- Technical – Storm Water
- Location & Relationships
- Accessibility



# SITE & PLANNING



## Building Statistics:

- Three-Story Brick
- 30 New Classrooms
- 43,000 Square Feet

Overall Campus Orientation

# EXTERIOR ELEVATIONS



2018 CLASSROOM BUILDING



NEW CLASSROOM BUILDING

# EXTERIOR ELEVATIONS



EAST ELEVATION AT BUS LOT



SOUTH ELEVATION FROM BUS LOT



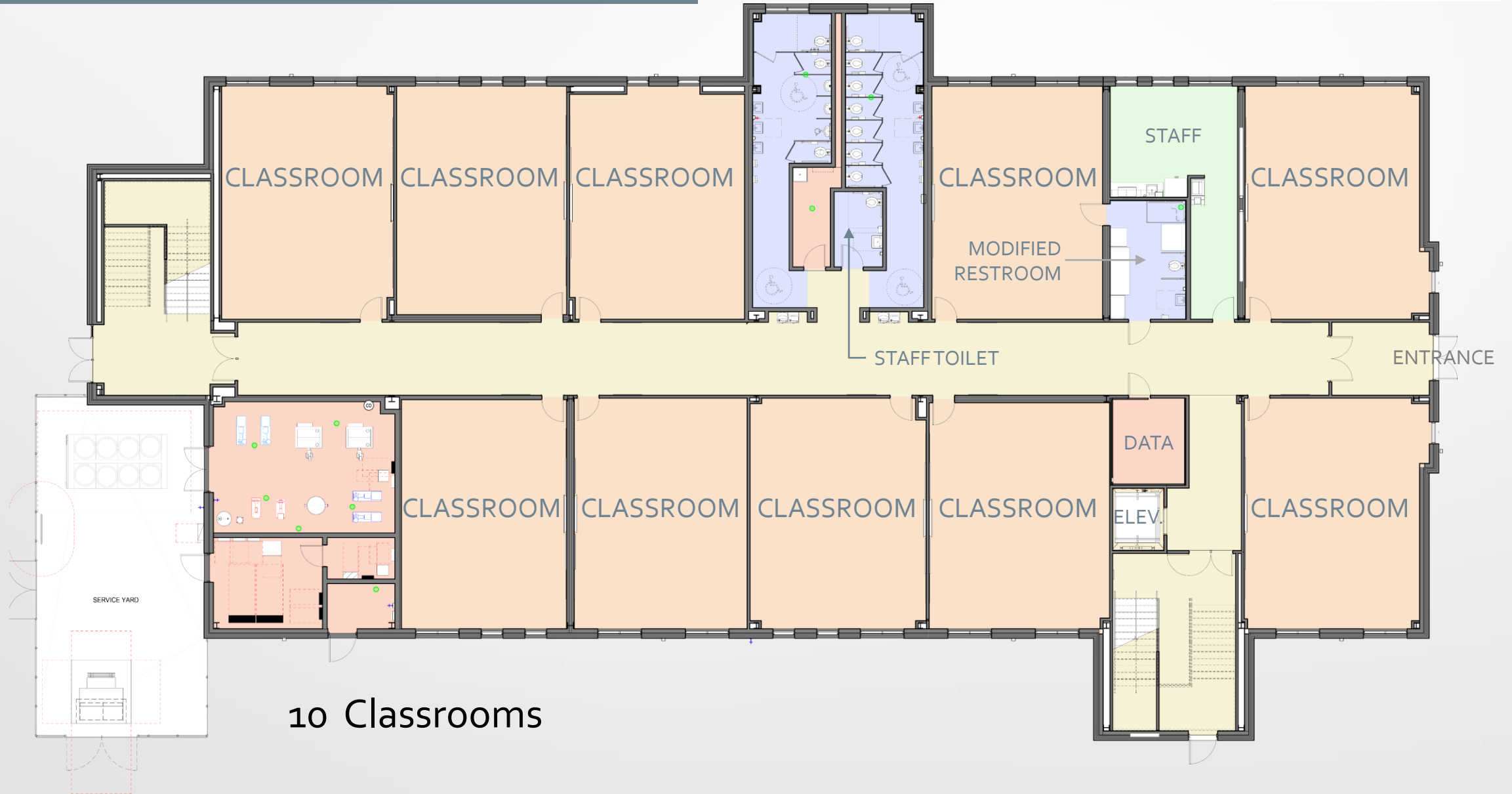
NORTH ELEVATION



SOUTH ELEVATION FROM 2018 CLASSROOM BUILDING

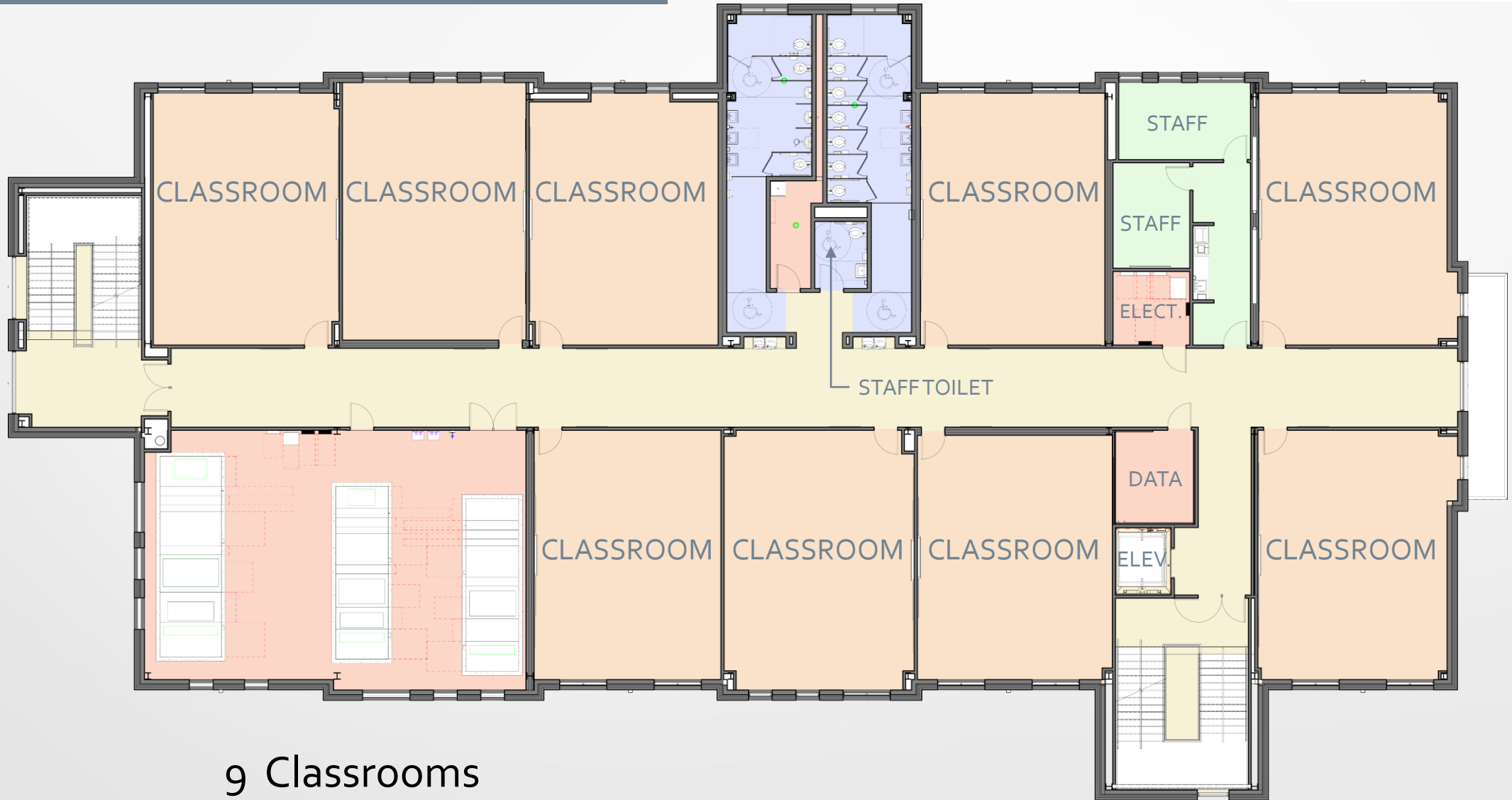


# FIRST FLOOR



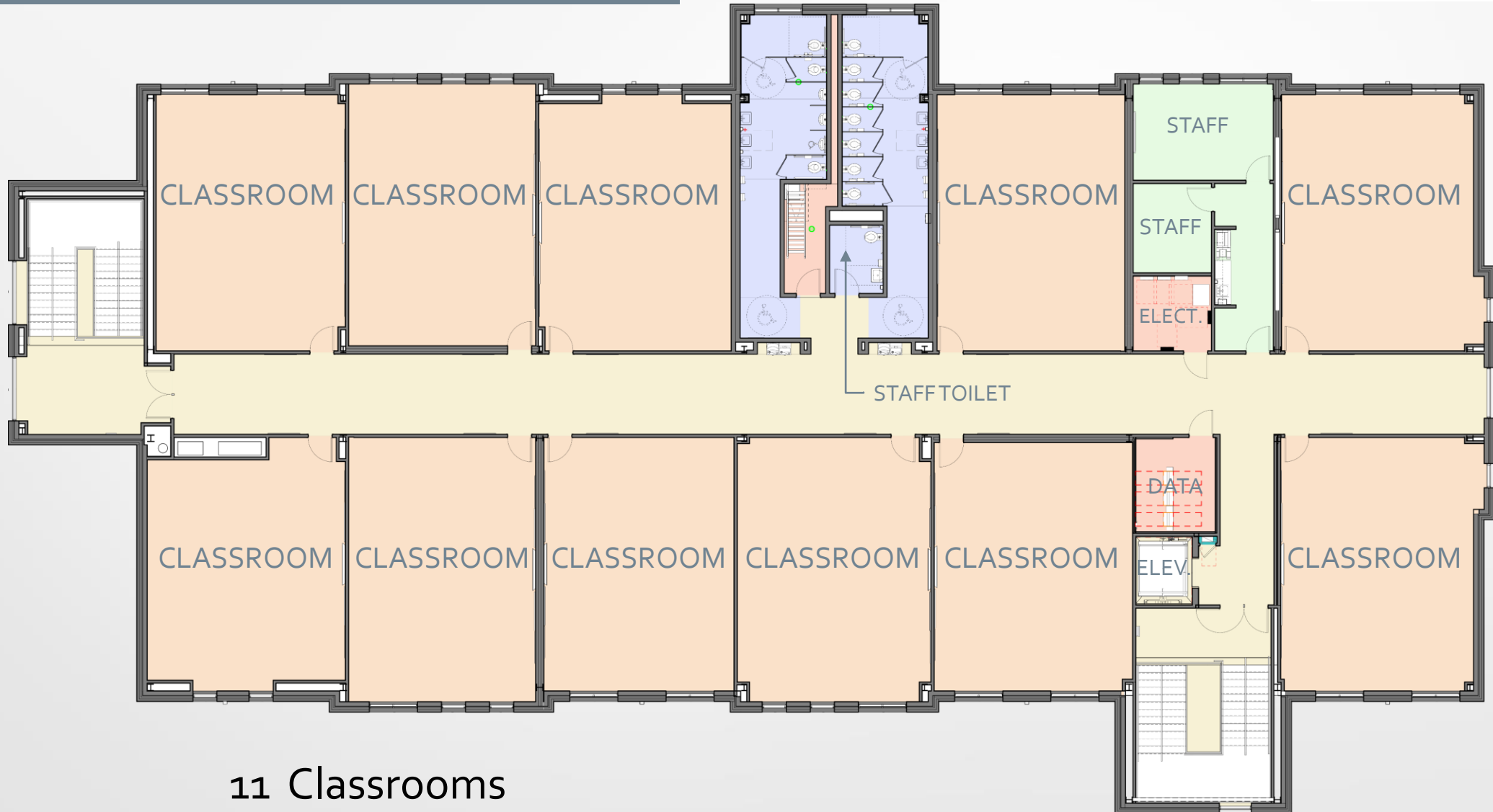
10 Classrooms

# SECOND FLOOR



9 Classrooms

# THIRD FLOOR



11 Classrooms

# NEW CLASSROOMS



# GROUP RESTROOMS / CORRIDOR





# LOGISTICS and CONSTRUCTION



[ LOGISTICS PLANS & STUDIES ]

**EAST MECKLENBURG HIGH SCHOOL CLASSROOM ADDITION**



GENERAL NOTES:

- 1. MATERIAL DELIVERIES TO BE COORDINATED WITH CMS & NOT DURING PEAK BUS HOURS
- 2. RIGHT TURNS ONLY INTO AND OUT OF BUS LOT





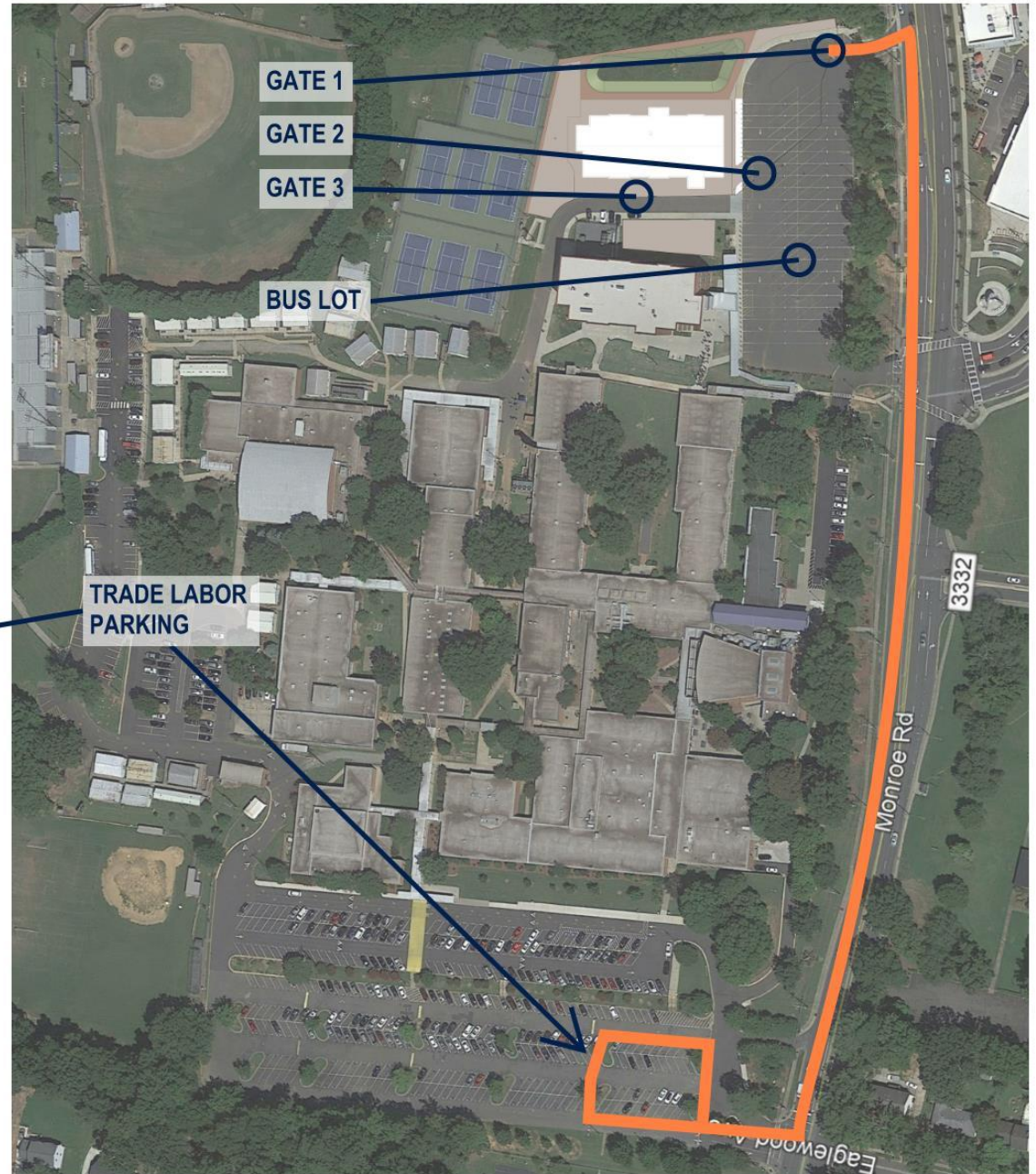
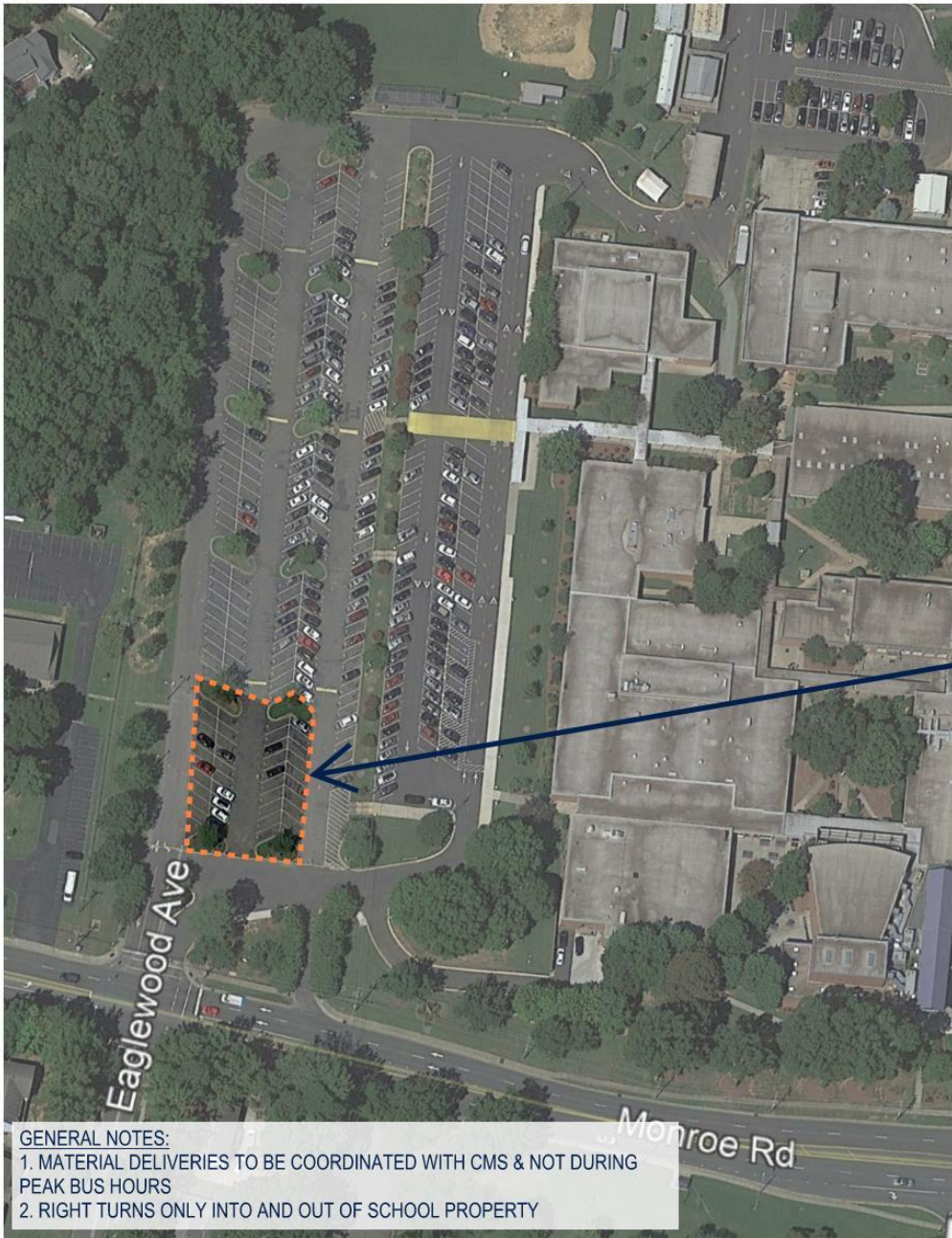
# LEGEND

- A - Construction Fence
- B - Gate
- C - Tire Wash
- D - Turner Trailer
- E - Dumpsters
- F - Portable Toilets
- G - Laydown Area
- H - Existing Utility Protection



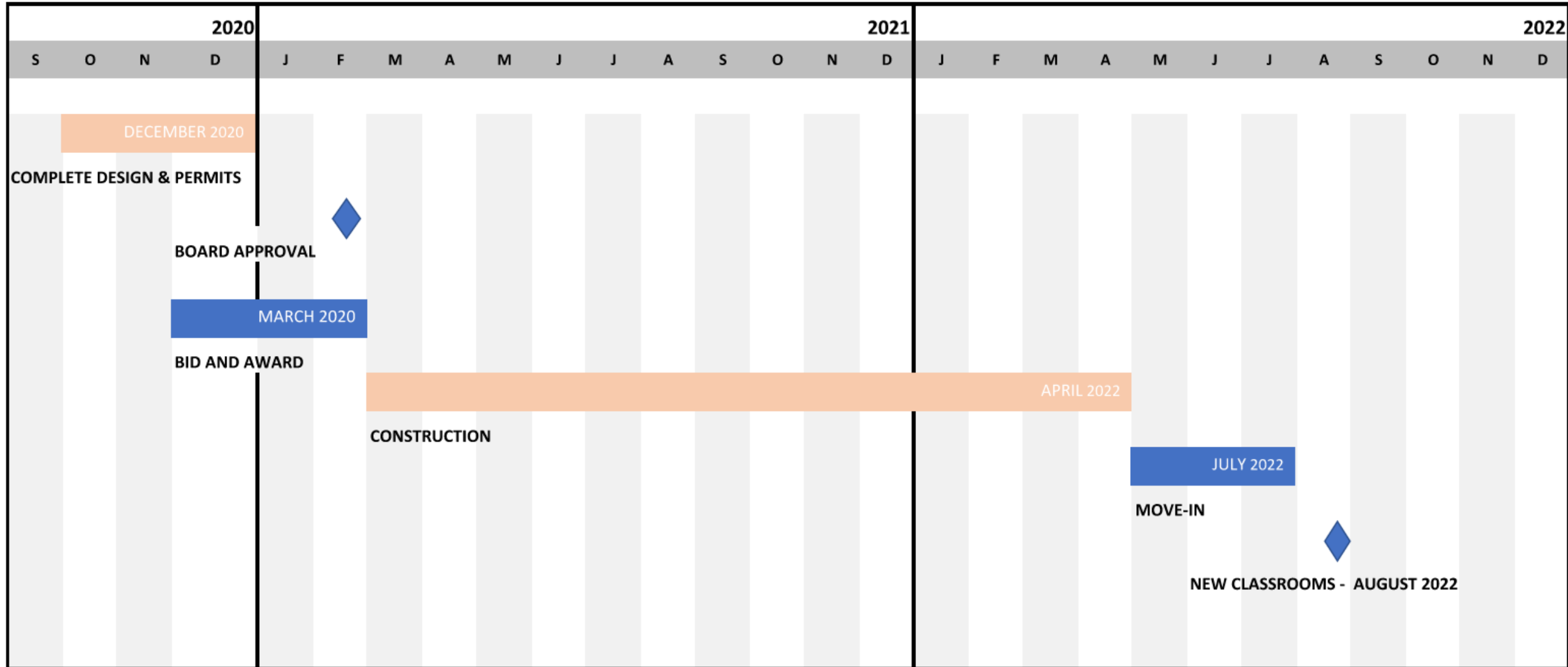


GENERAL NOTES:  
1. MATERIAL DELIVERIES TO BE COORDINATED WITH CMS & NOT DURING PEAK BUS HOURS



**EAST MECKLENBURG HIGH SCHOOL CLASSROOM ADDITION**  
 Construction Management Plan [ Logistics Plan ] - Trade Labor Parking

# PROJECT SCHEDULE





# For Information

<https://cmsbondconstruction.com/>

The screenshot shows the homepage of the CMS 2017 Bond Program website. At the top, there is a navigation menu with the following items: "cms Bond Home", "Projects", "Dashboard/Reports", "Working with CMS", and "Facilities Master Plan". Below the navigation is a purple header bar. The main content area features the title "2017 Bond Program" in a large, bold, black font. Below the title, there is a welcome message: "Welcome to the CMS 2017 Bond Program site. This site is an online resource for contractors, parents, and others who are interested in Charlotte-Mecklenburg Schools' renovation and new school construction bond projects." This is followed by a paragraph: "This site is designed to keep you abreast of what's going on, who's doing it and when. We've geared several pages to the specific needs of contractors while others provide detailed information about the progress being made on the schools". At the bottom, there are three circular icons in purple, each with a white icon and a corresponding label: "Projects" (with a location pin icon), "Dashboard/Reports" (with a bar chart icon), and "Working with CMS" (with a handshake icon).



Questions?

# Frequently Asked?



- What have you done to address Parking, Circulation and the Pick-up / Drop-off Process?
- How does the project address security?
- How does the project address COVID-19 concerns?
- Why are we adding new classrooms to an already large campus?
- Was improvements to the athletic fields or stadium considered?
- Is the presentation available for distribution?

# THANK YOU!



East Mecklenburg High School - Classroom Addition Project