

# Community Information Meeting



Bain Elementary  
Lebanon Road and  
Piney Grove Relief  
New Elementary School

November 19, 2020

# Agenda

Introductions

Site

Design

Construction

Q&A



OWNER



CONSTRUCTION MANAGER



DESIGN TEAM



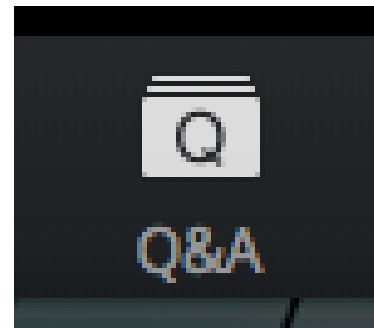
Bain Elementary, Lebanon Road, and Piney Grove Relief  
New Elementary School



We welcome your  
questions.



Click the Q&A Icon and  
type in your questions.





# Building Exterior

Aerial from Idlewild Road



Site





Mint Hill Middle School

# Location Map



**SITE**

IDLEWILD RD

MATTHEWS-MINT HILL RD

51

INTERSTATE  
NORTH CAROLINA  
**485**

**74**

3168

3143

3174

485

3177

3180

74E Indep

Sam Newell Rd  
I-74





# Existing Site Plan

Mint Hill  
Middle School

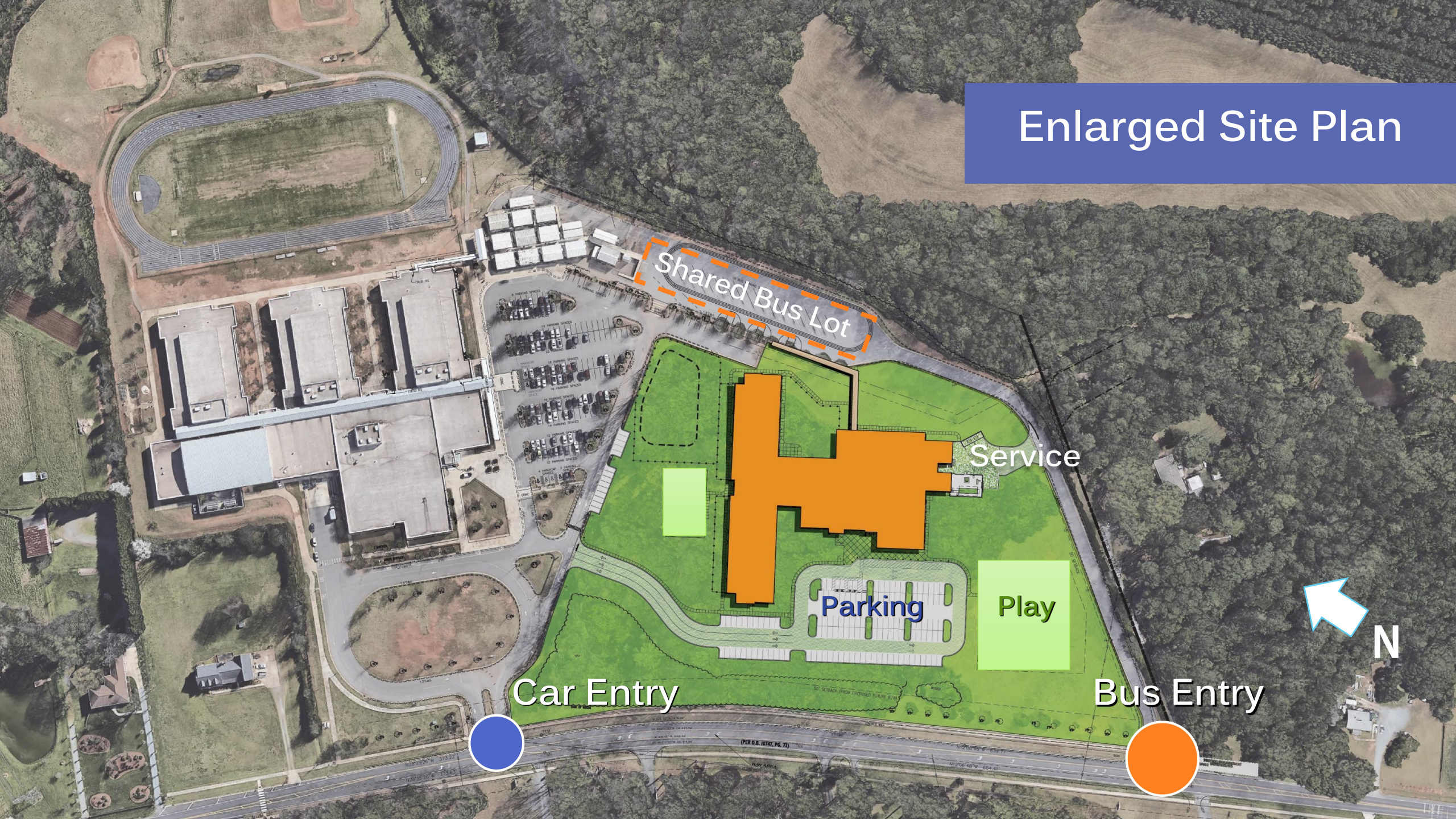
New Elementary  
School Site

Idlewild Road





# Enlarged Site Plan



Shared Bus Lot

Service

Parking

Play

Car Entry

Bus Entry

N



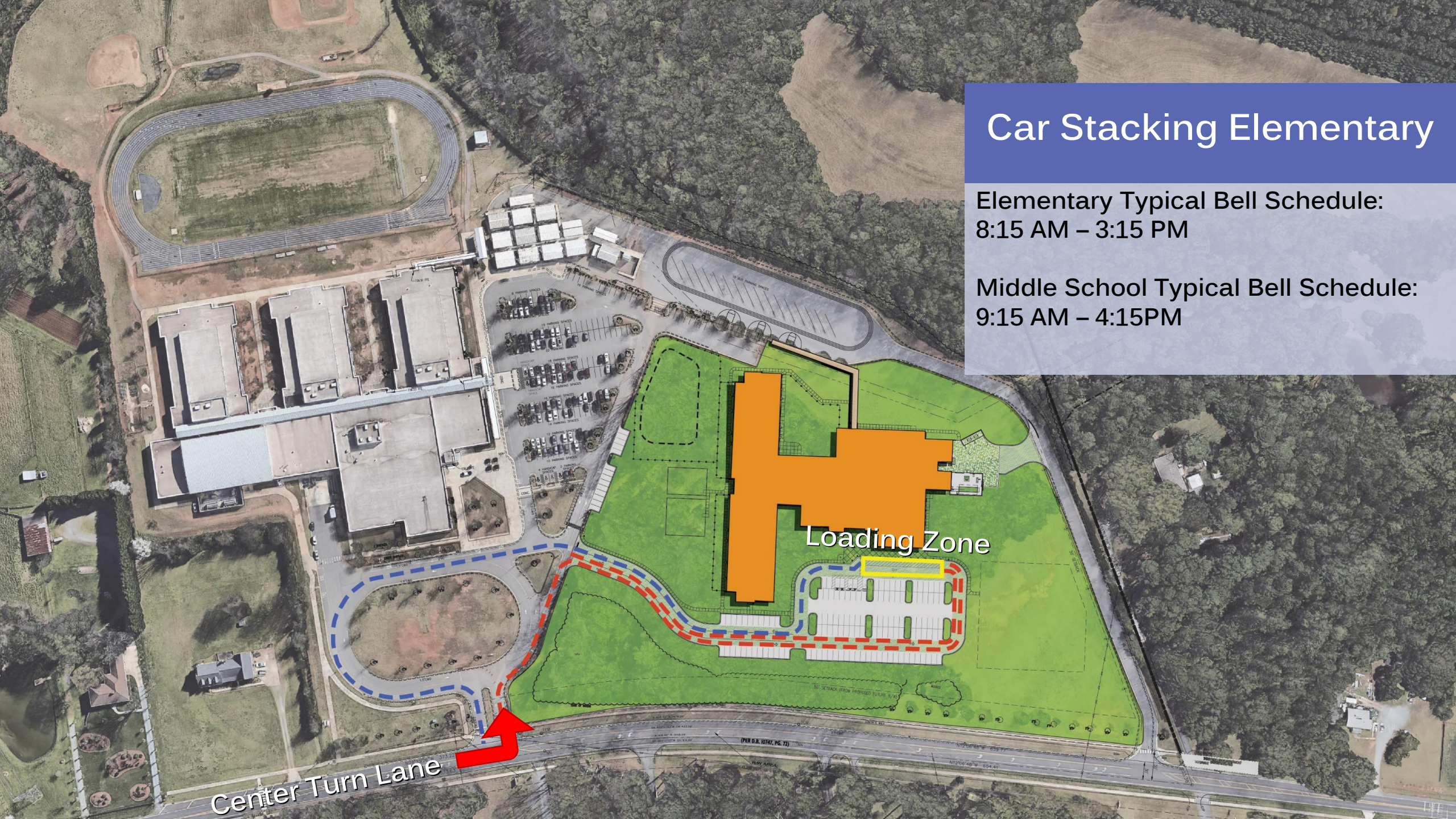
# Car Stacking Elementary

Elementary Typical Bell Schedule:  
8:15 AM – 3:15 PM

Middle School Typical Bell Schedule:  
9:15 AM – 4:15PM

Center Turn Lane

Loading Zone





Your new school .

# Building Exterior

View from Idlewild Road





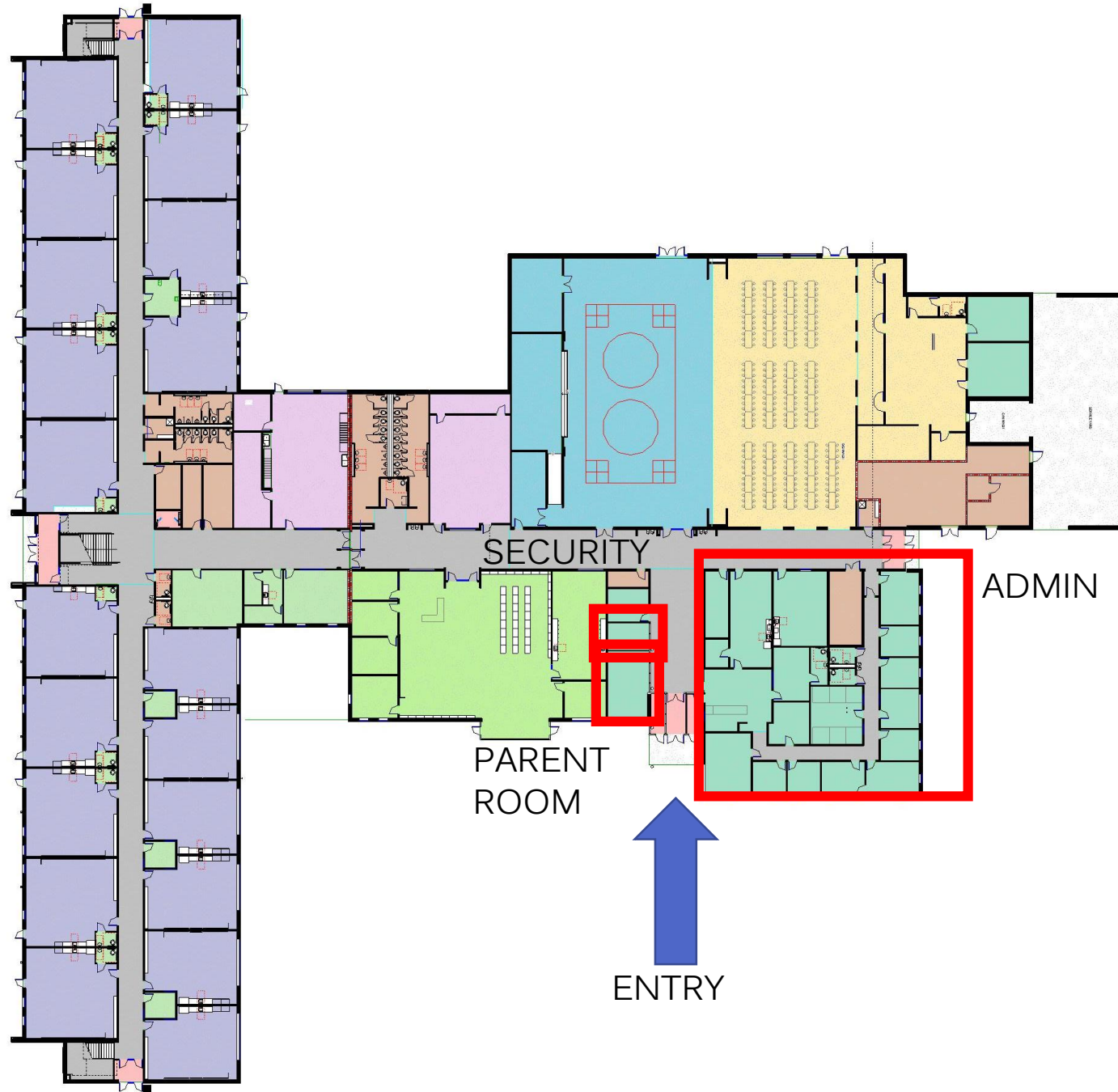
# Building Exterior

Parking Entry View



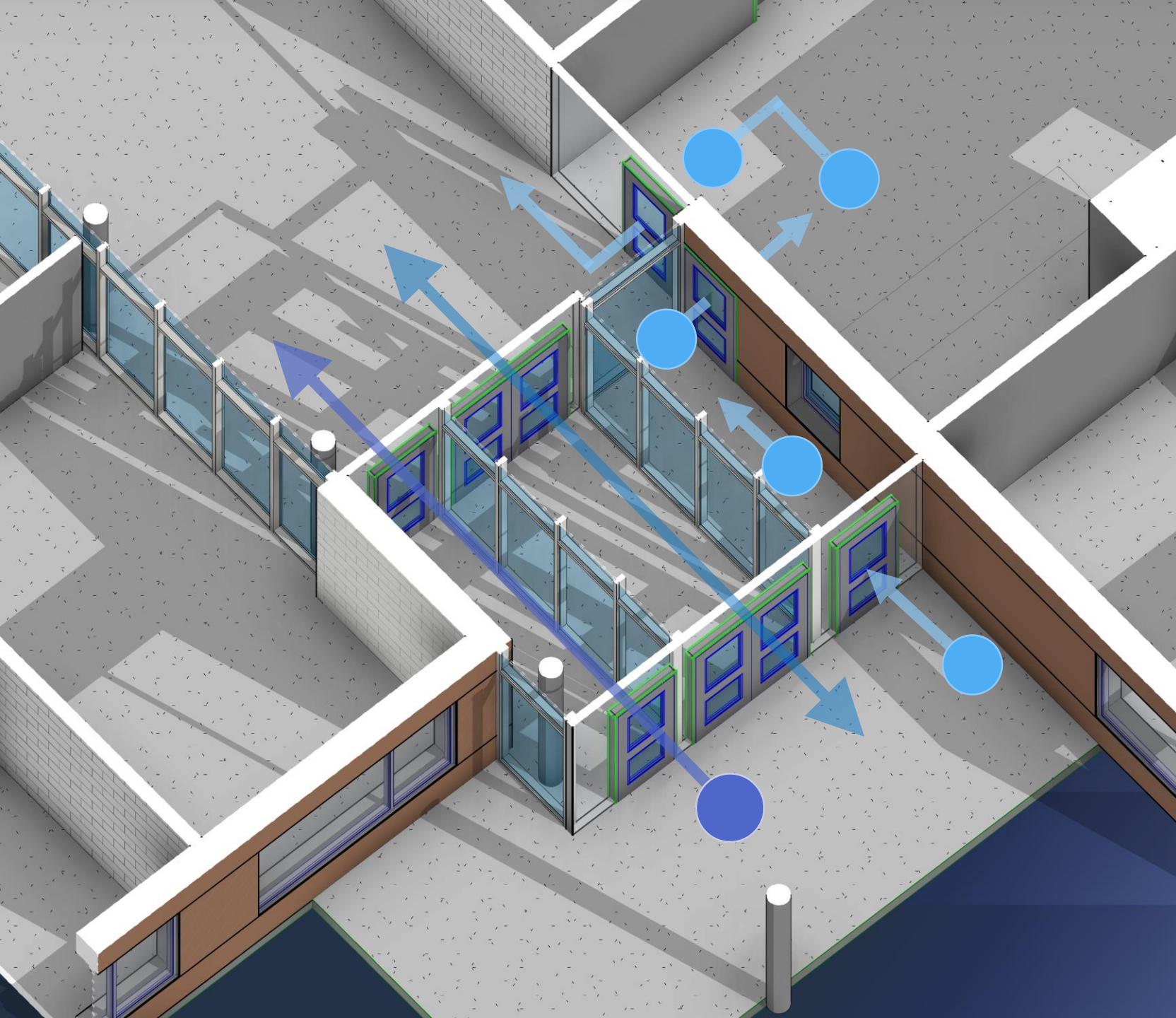


# Floor Plan 01



## DEPARTMENTS

- ADMINISTRATION
- BLDG SUPPORT
- CAFETERIA
- CIRCULATION
- CLASSROOMS
- ELECTIVE CLASSROOMS
- MEDIA
- PHYSICAL EDUCATION
- SUPPORT SPACES



## Security Vestibule

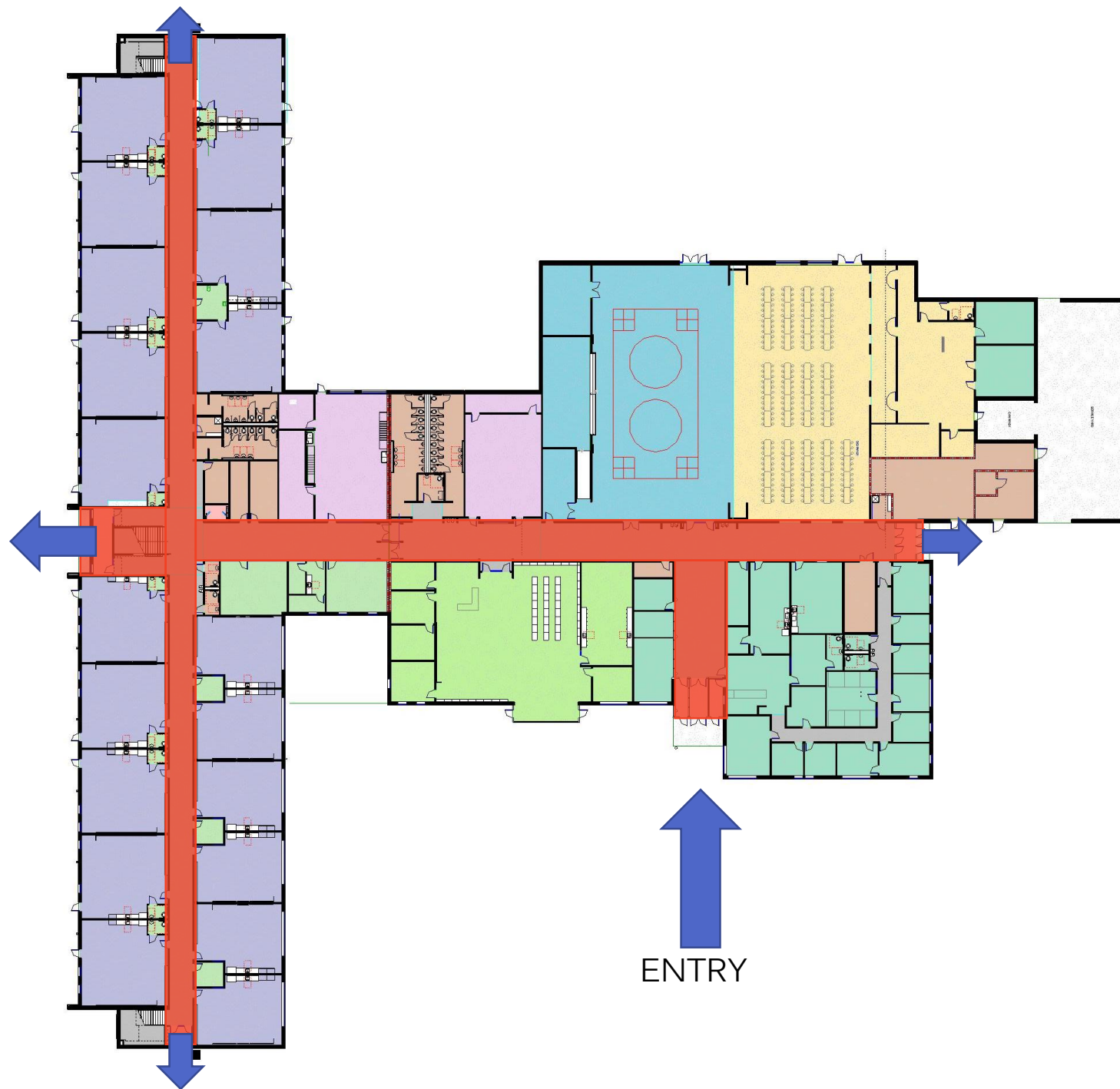
Student Entry

Teacher Entry

Visitor Entry



# Circulation Plan



## DEPARTMENTS

- ADMINISTRATION
- BLDG SUPPORT
- CAFETERIA
- CIRCULATION
- CLASSROOMS
- ELECTIVE CLASSROOMS
- MEDIA
- PHYSICAL EDUCATION
- SUPPORT SPACES

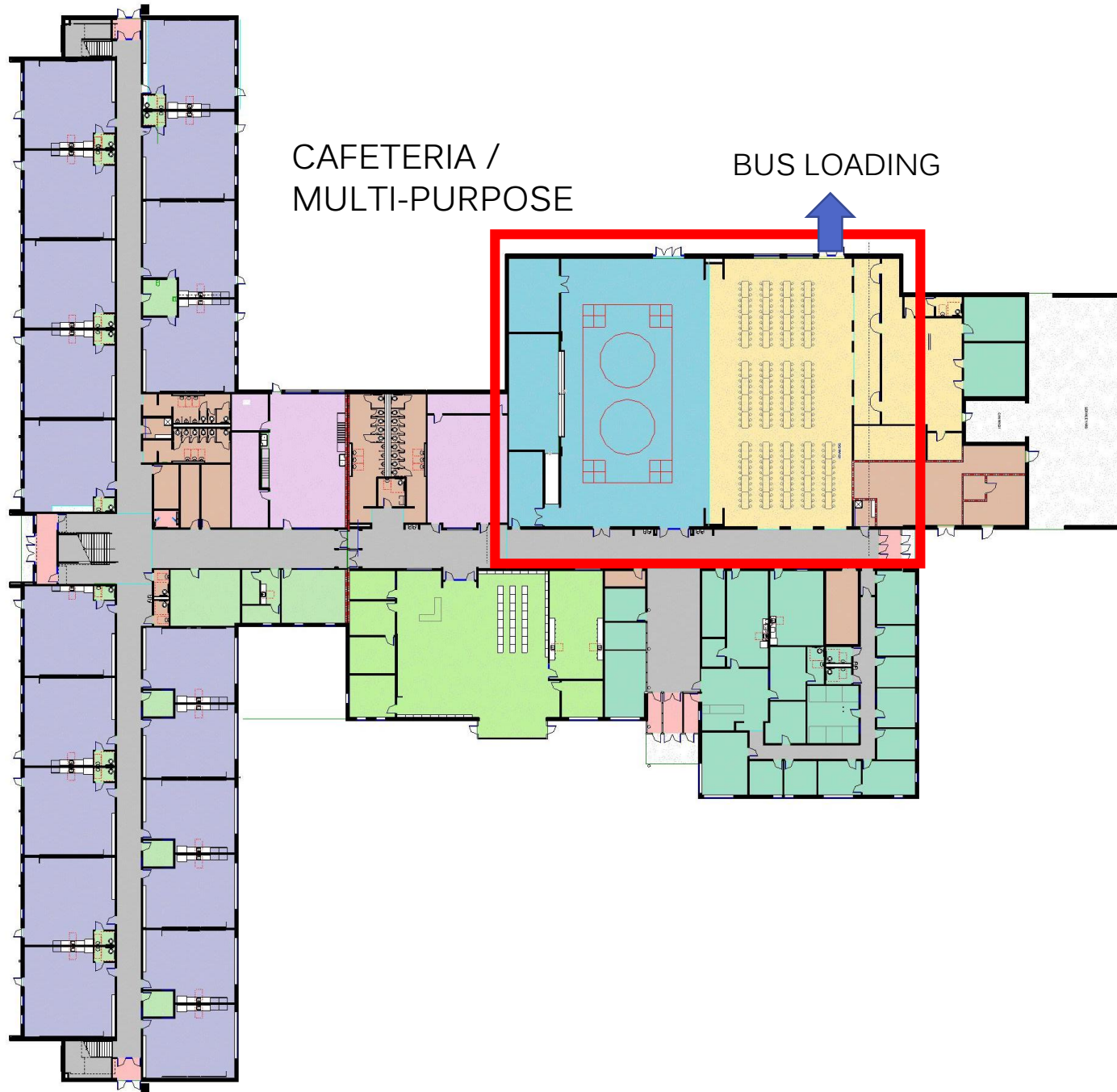
# Natural Light





CAFETERIA /  
MULTI-PURPOSE

BUS LOADING



## Floor Plan 01

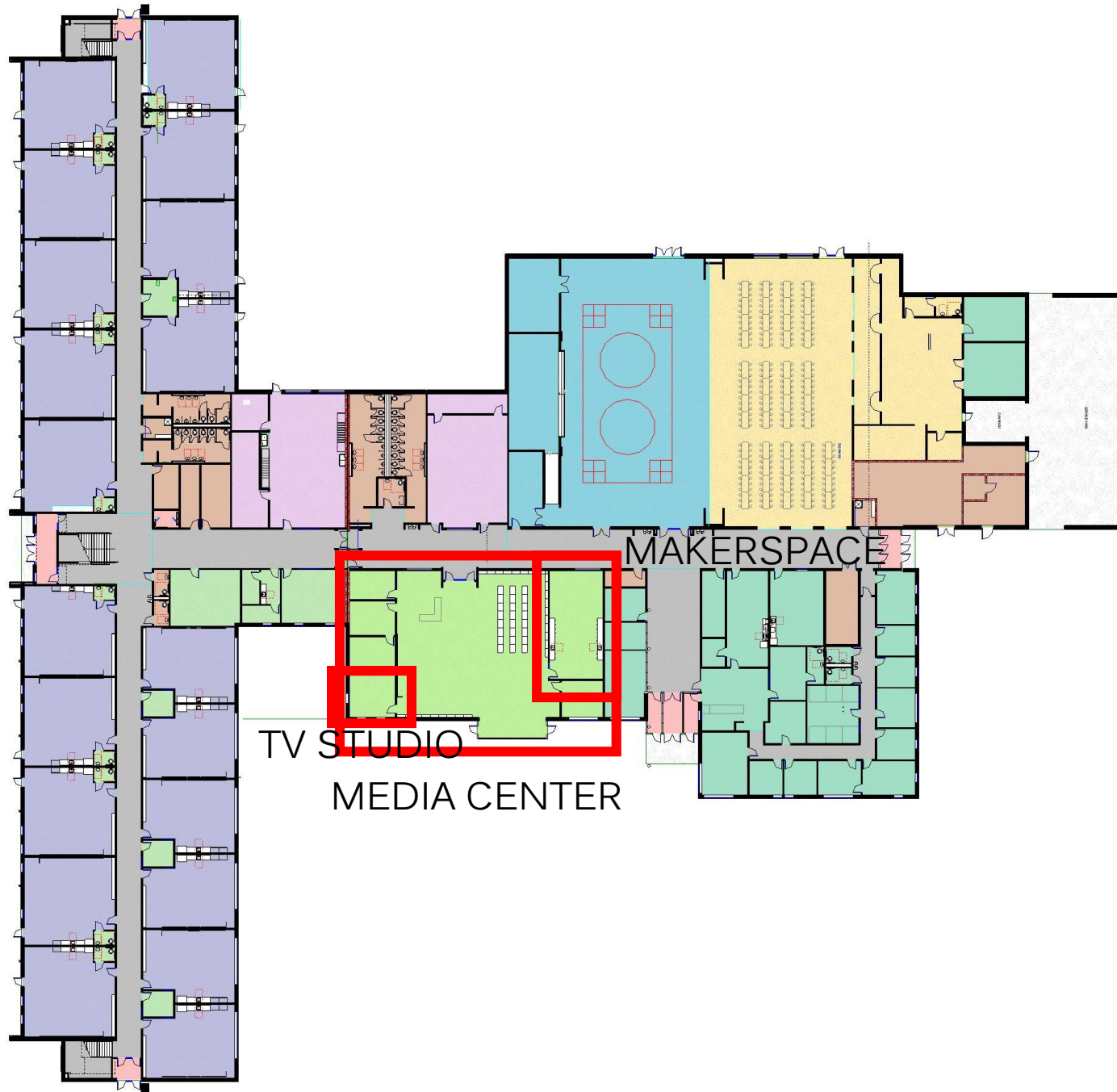
### DEPARTMENTS

-  ADMINISTRATION
-  BLDG  
SUPPORT
-  CAFETERIA
-  CIRCULATION
-  CLASSROOMS
-  ELECTIVE  
CLASSROOMS
-  MEDIA
-  PHYSICAL  
EDUCATION
-  SUPPORT  
SPACES

Multipurpose & Dining



# Floor Plan 01

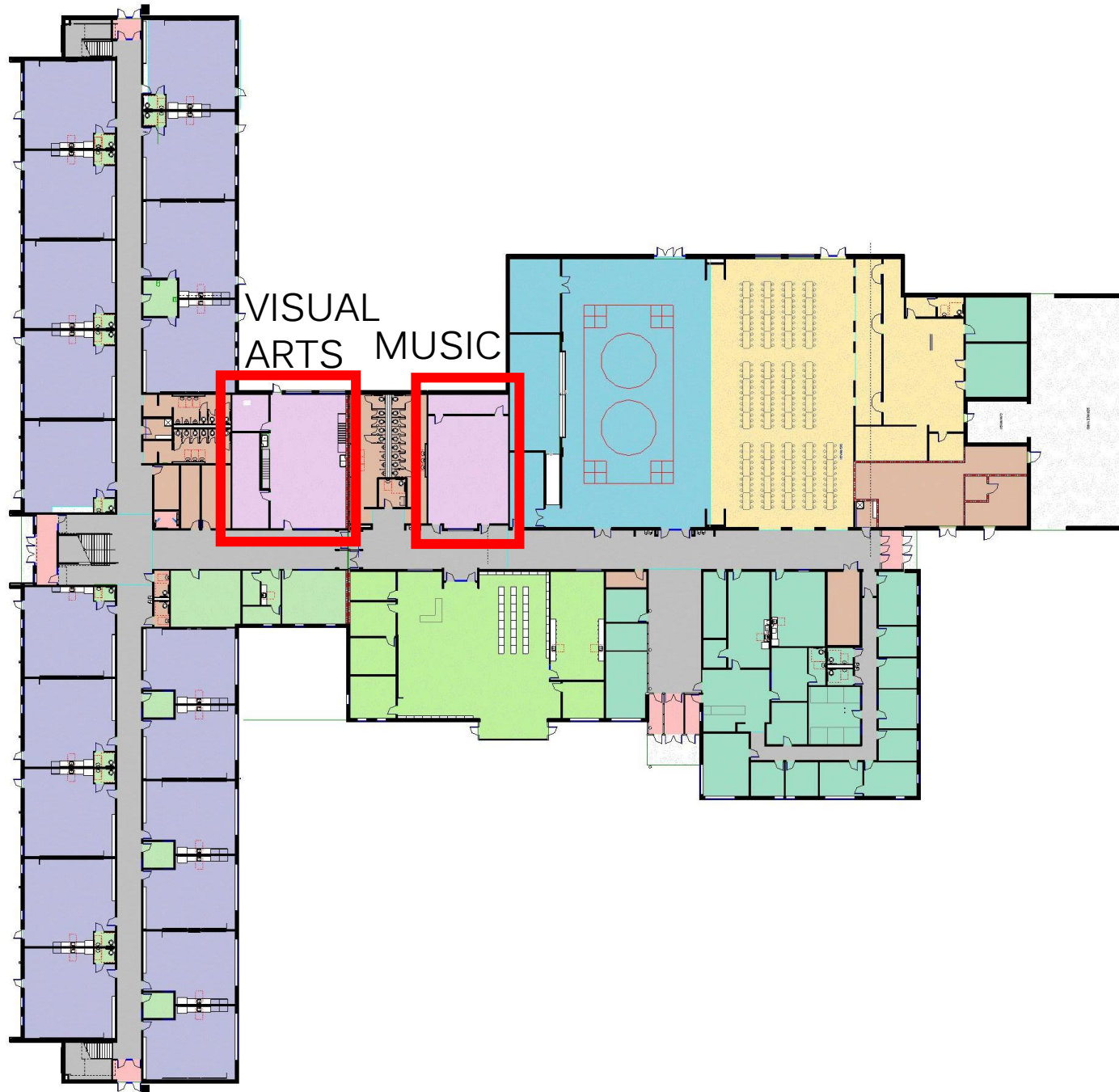


## DEPARTMENTS

-  ADMINISTRATION
-  BLDG SUPPORT
-  CAFETERIA
-  CIRCULATION
-  CLASSROOMS
-  ELECTIVE CLASSROOMS
-  MEDIA
-  PHYSICAL EDUCATION
-  SUPPORT SPACES



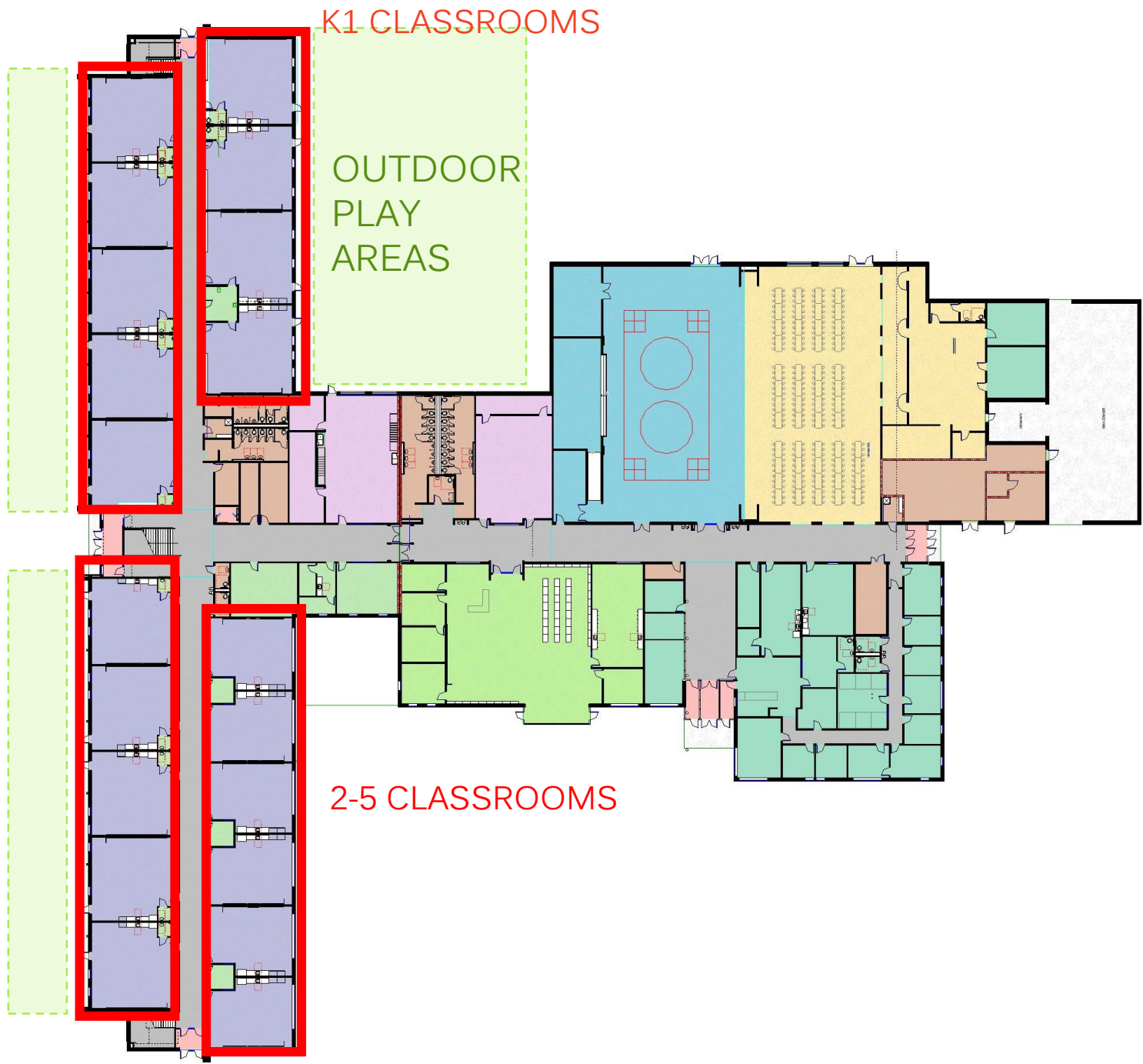
# Floor Plan 01



## DEPARTMENTS

- ADMINISTRATION
- BLDG SUPPORT
- CAFETERIA
- CIRCULATION
- CLASSROOMS
- ELECTIVE CLASSROOMS
- MEDIA
- PHYSICAL EDUCATION
- SUPPORT SPACES

# Floor Plan 01



## DEPARTMENTS

- ADMINISTRATION
- BLDG SUPPORT
- CAFETERIA
- CIRCULATION
- CLASSROOMS
- ELECTIVE CLASSROOMS
- MEDIA
- PHYSICAL EDUCATION
- SUPPORT SPACES

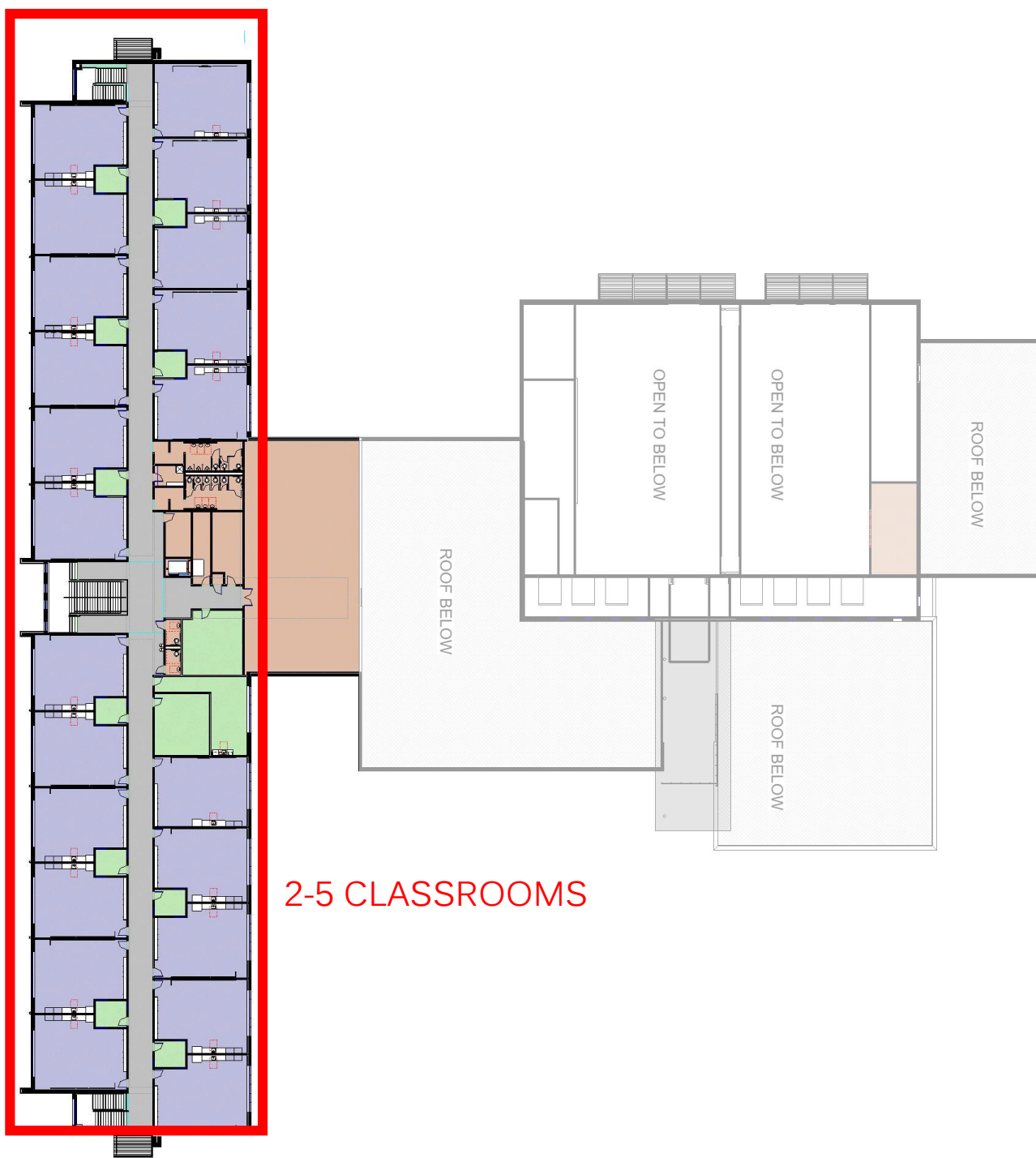


# Building Exterior

View of two story classroom wing



## Floor Plan 02



2-5 CLASSROOMS

### DEPARTMENTS

-  ADMINISTRATION
-  BLDG SUPPORT
-  CAFETERIA
-  CIRCULATION
-  CLASSROOMS
-  ELECTIVE CLASSROOMS
-  MEDIA
-  PHYSICAL EDUCATION
-  SUPPORT SPACES

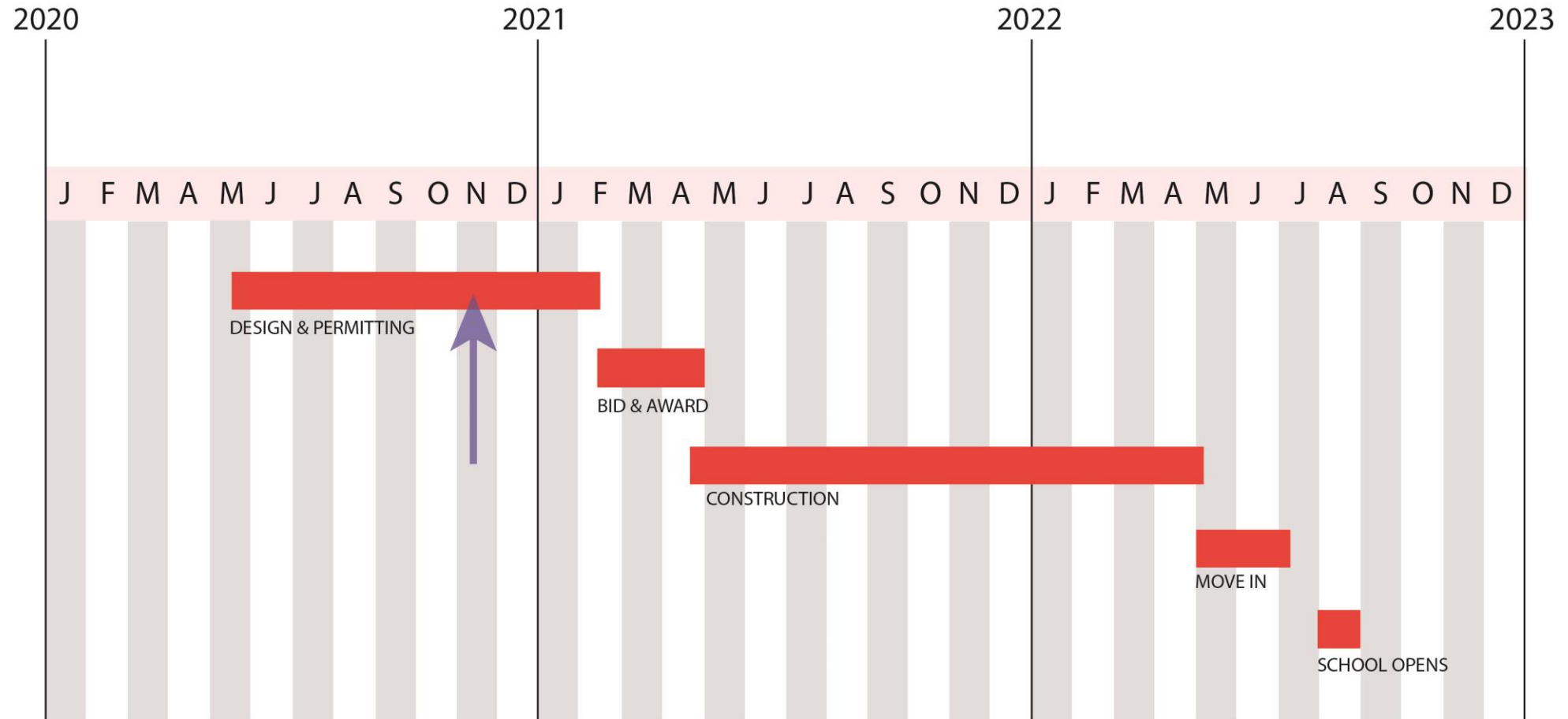


# Building Exterior

View from Idlewild Road



# SCHEDULE



# What to expect during construction



NEW ELEMENTARY SCHOOL  
LEBANON-BAIN-PINEY GROVE RELIEF  
**PRELIMINARY** LOGISTICS PLAN  
(SUBJECT TO CHANGE)  
11.11.2020

# Construction Plan

- Fenced Construction Site
- Construction Entrance off the Bus Access Road.
- No construction traffic during drop off and pick-up hours.



Bain Elementary, Lebanon Road, and Piney Grove Relief  
New Elementary School





# Thank you.

---





# Car Stacking Middle

Elementary Typical Bell Schedule:  
8:15 AM – 3:15 PM

Middle School Typical Bell Schedule:  
9:15 AM – 4:15PM

